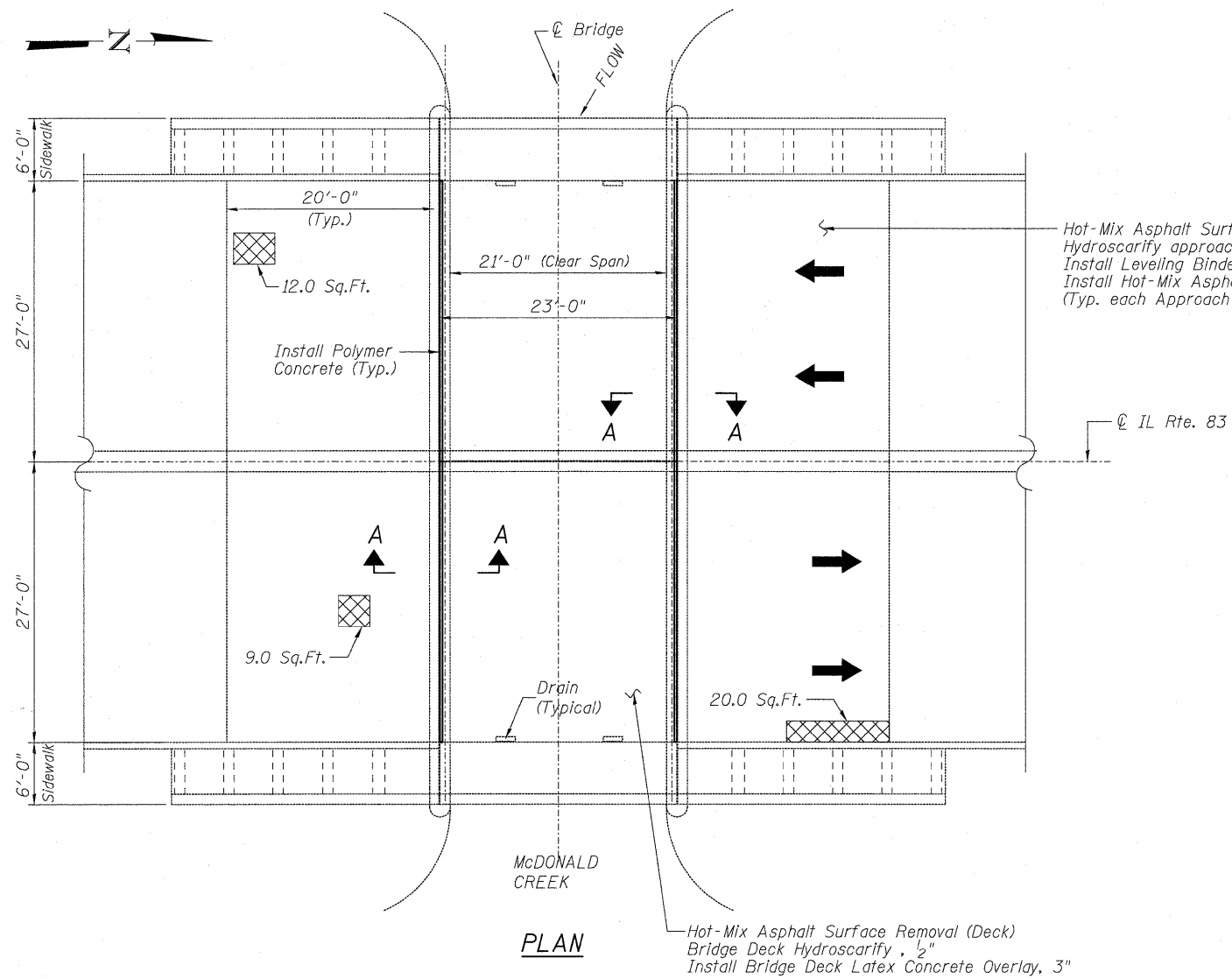
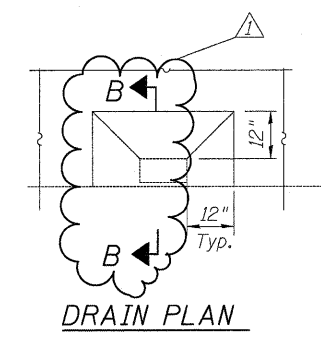


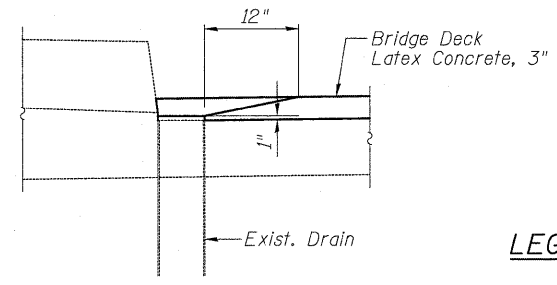
STATE OF ILLINOIS  
DEPARTMENT OF TRANSPORTATION



PLAN



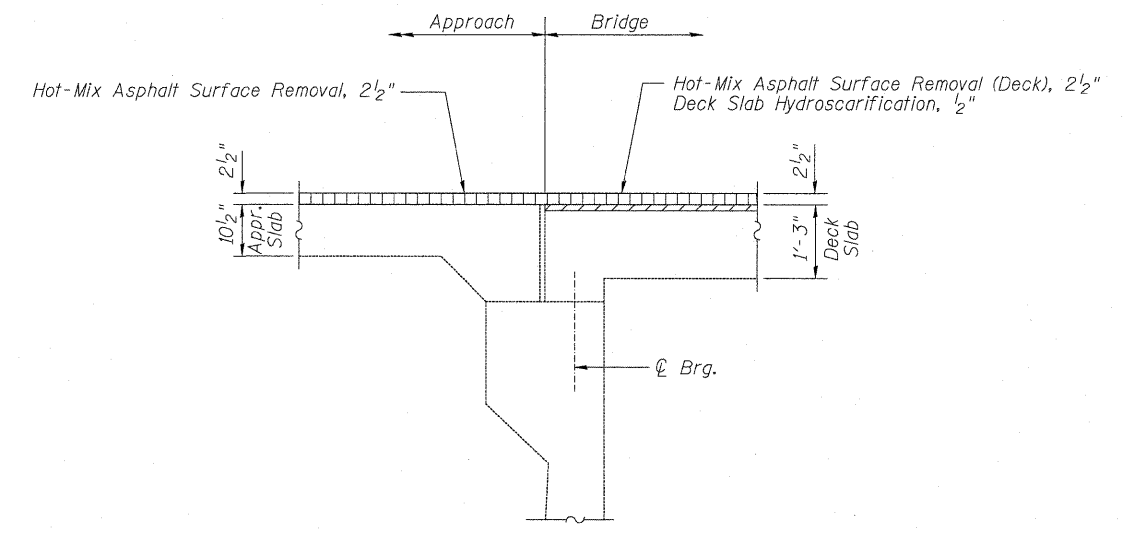
DRAIN PLAN



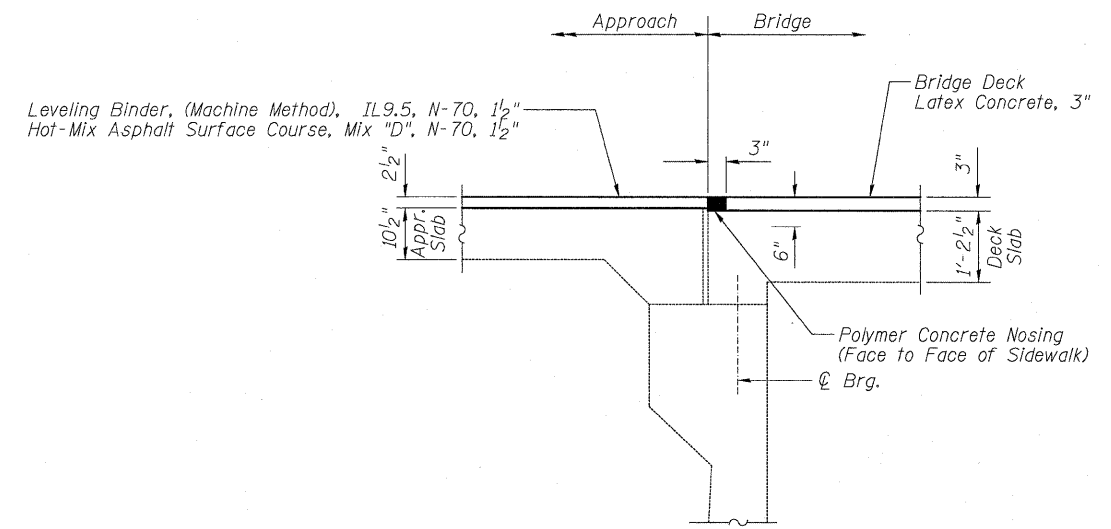
SECTION B-B

- LEGEND:**
- Approach Slab Repair (Partial Depth)
  - Hot-Mix Asphalt Surface Removal, 2 1/2"
  - Hydroscarification, 1/2"

Note:  
Repair of the existing bridge approaches shall include but may not be limited to the areas shown. The actual areas to be repaired will be determined by the Engineer at the time of construction.



SECTION A-A  
EXISTING



SECTION A-A  
PROPOSED

**BRIDGE APPROACH PATCHING &  
TRANSVERSE JOINT RECONSTRUCTION DETAILS  
STRUCTURE NO. 016-0558**

DESIGNED	JPM
CHECKED	TG
DRAWN	MPS
CHECKED	JPM, TG



SHEET NO. S4	F.A.P. RTE.	SECTION	COUNTY	TOTAL SHEETS	SHEET NO.
	344	97 B-I-1	COOK	16	11
S5 SHEETS	CONTRACT NO. 60J60			ILLINOIS FED. AID PROJECT	