

STATE OF ILLINOIS  
DEPARTMENT OF TRANSPORTATION

BILL OF MATERIAL

SYMBOL	ITEM	UNIT	QUANTITY
	Deck Slab Repair (Partial) Δ	Sq. Yd.	12
	Approach Slab Repair (Partial Depth)	Sq. Yd.	1
	Protective Coat	Sq. Yd.	203
	Bridge Deck Grooving	Sq. Yd.	165
	Bridge Deck Latex Concrete Overlay 2 1/4"	Sq. Yd.	160
	Bridge Deck Hydro-Scarification 1/2"	Sq. Yd.	172
	Structural Repair of Concrete (Depth equal to or less than 5")	Sq. Ft.	92
	Hot-Mix Asphalt Surface Removal 1 1/2"	Sq. Yd.	245
	Polymerized Hot-Mix Asphalt Surface Course Mix "F", N90	Ton	21
	Hot-Mix Asphalt Surface Removal (Deck)	Sq. Yd.	172
	Concrete Removal	Cu. Yd.	12
	Concrete Superstructure	Cu. Yd.	7
	Reinforcement Bars, Epoxy Coated	Pound	1,270
	Bituminous Materials (Prime Coat)	Gallon	25

BAR	NO.	SIZE	LENGTH	SHAPE
a1 (E)	13	#8	27'-8"	—
a2 (E)	5	#5	27'-8"	—
b1 (E)	58	#4	4'-2"	—

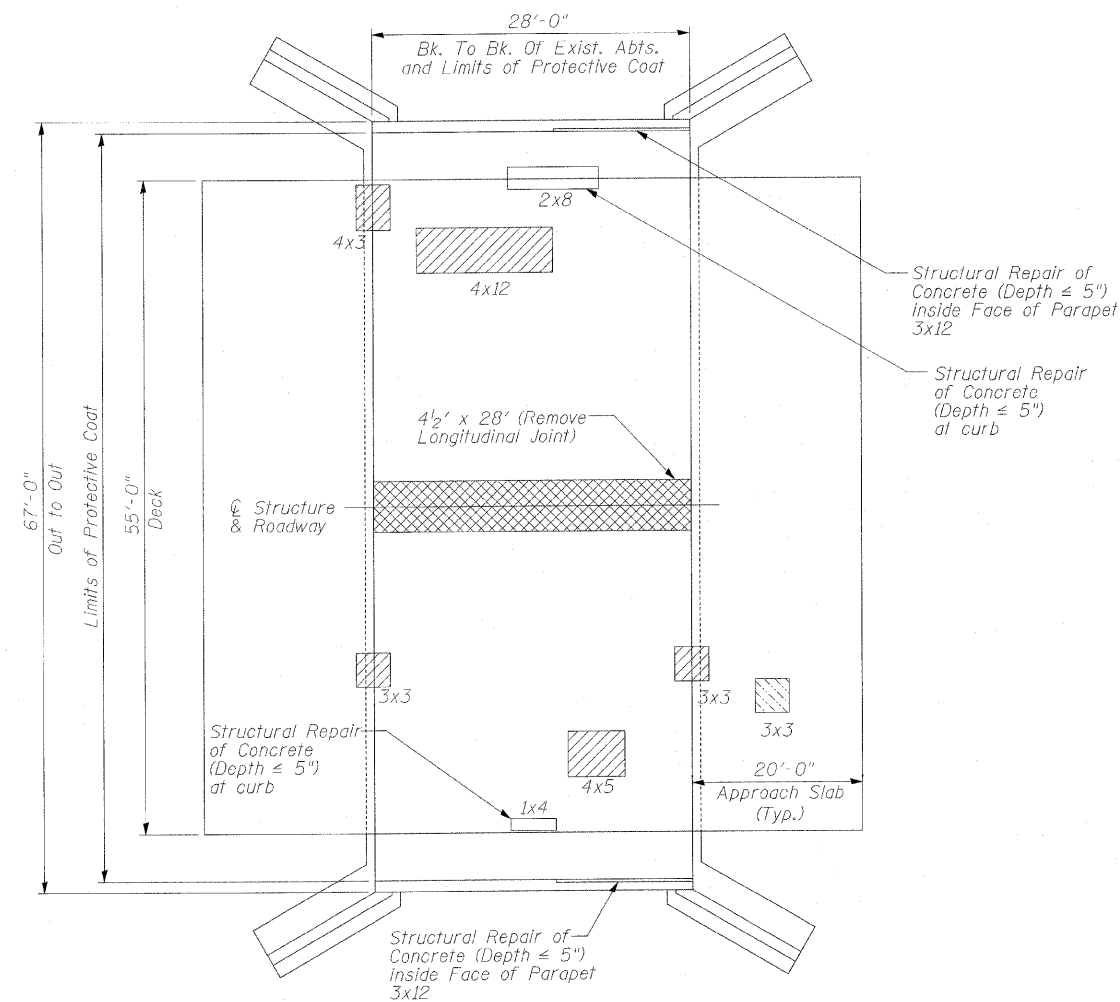
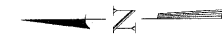
Δ For information only to assist the Contractor in bidding. See Special Provision for "Bridge Deck Latex Overlay."

**NOTES:**

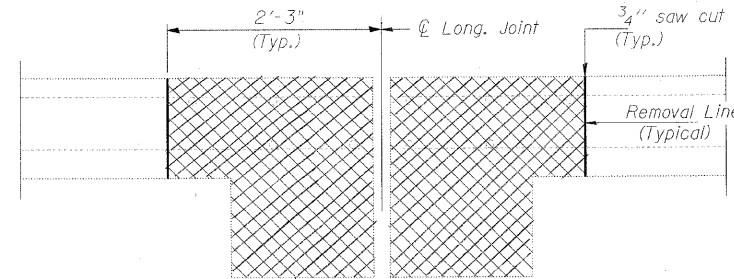
- Deck And Approach Slab Repair Areas Are Estimated Based On Visual Inspection Completed In October 2009. Actual Repair Areas And Locations Shall Be Determined By The Engineer And Shown On As-built Plans.
- The Contractor may have to remove and reattach traffic barrier terminal to facilitate structural repair of concrete at parapets. This work shall be included in the item for "Structural Repair of Concrete (Depth < 5)".
- The following items consider the entire deck surface area:  
Hot Mix Asphalt Surface Removal (Deck)  
Bridge deck hydro-scarification 1/2"  
Bridge deck grooving
- The item for Bridge Deck Latex Concrete Overlay 2 1/4" considers the deck area excluding the reconstructed longitudinal joint area.
- The following items apply to the extents of both approach slabs:  
Hot-Mix Asphalt Surface Removal, 1 1/2"  
Polymerized Hot-Mix Asphalt Surface Course, Mix "F", N90  
Bituminous Materials (Prime Coat)
- The protective coat shall be applied to the bridge deck, sidewalks and inside faces of parapets.

**PARAPET, BRIDGE DECK AND  
APPROACH SLAB REPAIRS  
STRUCTURE NO. 016-0677**

SHEET NO. S4 OF S4 SHEETS	F.A.U. RTE.	SECTION	COUNTY	TOTAL SHEETS	SHEET NO.
	2678	3025-I-1	COOK	10	8
CONTRACT NO. 60J70					
ILLINOIS FED. AID PROJECT					

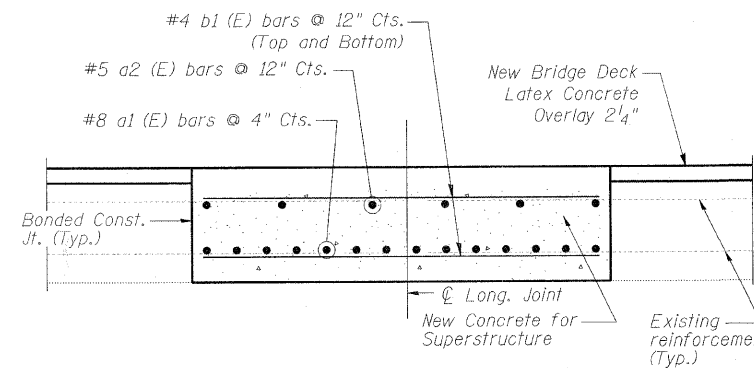


**PLAN**



**EXISTING LONGITUDINAL JOINT CROSS SECTION**

**Cross** Hatched areas indicate concrete sections to be removed. Perimeters of Concrete Removal areas shall be saw cut 3/4" prior to the removal of the concrete. Existing transverse reinforcement shall be cleaned, straightened and incorporated into the new construction. New reinforcement bars shall be epoxy coated.



**RECONSTRUCTED LONGITUDINAL JOINT  
WITH CONCRETE BRIDGE DECK OVERLAY  
DETAIL**

DESIGNED JMC/JMH	2010
CHECKED JMH	EXAMINED
DRAWN JMC	ENGINEER OF STRUCTURAL SERVICES
CHECKED SLK	PASSED
	ENGINEER OF BRIDGES AND STRUCTURES