

F.A.P. RTE.	SECTION	COUNTY	TOTAL SHEETS	SHEET NO.
347	4 R-T	KANE	20*	1
FED. ROAD DIST. NO. 1	ILLINOIS	CONTRACT NO. 60K16		

D-91-442-10 *20+1=21

STATE OF ILLINOIS
DEPARTMENT OF TRANSPORTATION
DIVISION OF HIGHWAYS
PROPOSED
HIGHWAY PLANS
F.A.P. 347 (ILLINOIS ROUTE 38)
SECTION: 4 R-T
AT PECK ROAD
DRAINAGE IMPROVEMENT

FOR INDEX OF SHEETS, SEE SHEET NO. 2

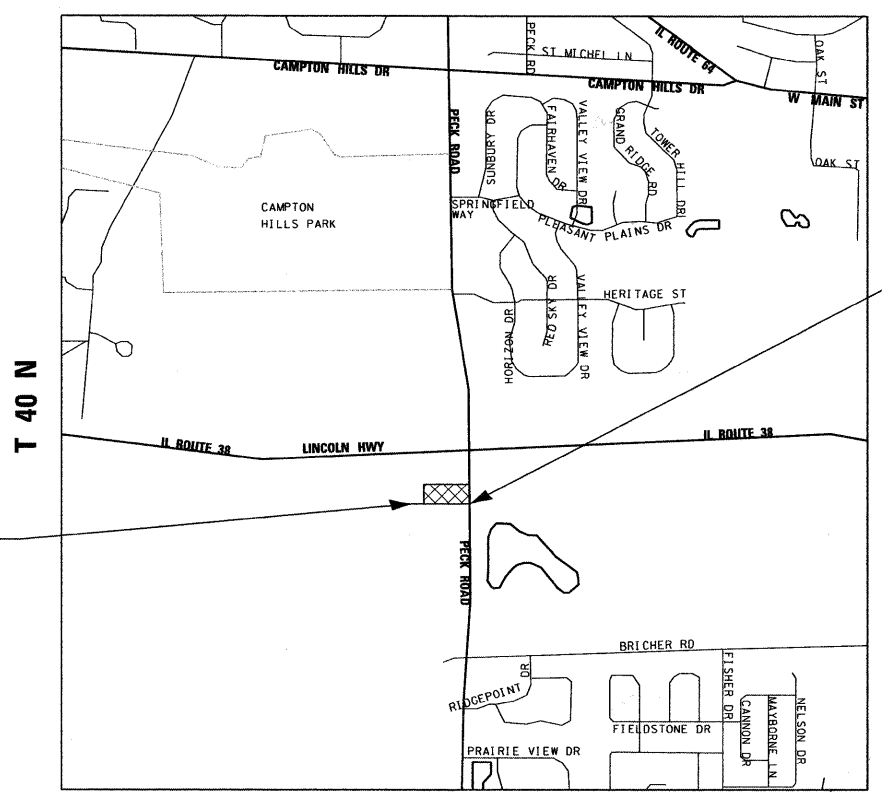


LOCATION OF SECTION INDICATED THUS: —

IMPROVEMENT LOCATED WITHIN THE CITY OF ST. CHARLES

KANE COUNTY
C-91-442-10

R 8 E



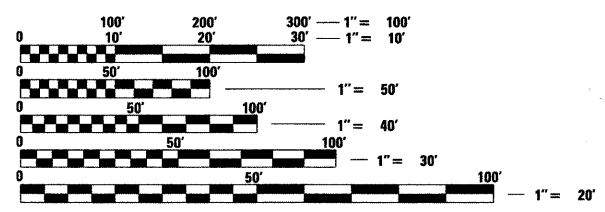
T 40 N



IMPROVEMENT ENDS
 STA. 21 + 00.00

IMPROVEMENT BEGINS
 STA. 12 + 56.78

TRAFFIC DATA
PECK ROAD
 2007 ADT = 7,400
 SPEED LIMIT = 45 MPH



FULL SIZE PLANS HAVE BEEN PREPARED USING STANDARD ENGINEERING SCALES. REDUCED SIZED PLANS WILL NOT CONFORM TO STANDARD SCALES. IN MAKING MEASUREMENTS ON REDUCED PLANS, THE ABOVE SCALES MAY BE USED.

J.U.L.I.E.
 JOINT UTILITY LOCATION INFORMATION FOR EXCAVATION
 1-800-892-0123
 OR 811

SCALE: NTS

ST. CHARLES TOWNSHIP

GROSS LENGTH OF PROJECT = 494 FT = 0.09 MILE
NET LENGTH OF PROJECT = 494 FT = 0.09 MILE

CONTRACT NO. 60K16

STATE OF ILLINOIS
 DEPARTMENT OF TRANSPORTATION
 DIVISION OF HIGHWAYS

SUBMITTED MAY 26 2010

Diana M. O'Keefe
 DEPUTY DIRECTOR OF HIGHWAYS, REGION ENGINEER

June 25 2010
Scott E. Stitt, P.E.
 acting ENGINEER OF DESIGN AND ENVIRONMENT

June 25 2010
Christine M. Reed
 DIRECTOR OF HIGHWAYS, CHIEF ENGINEER




200 22ND Street, Suite 216, Lombard, IL 60148
 630.705.0110 voice, 630.839.2566 fax
 www.mps-il.com

MILLENNIA PROFESSIONAL SERVICES

MILLENNIA PROFESSIONAL SERVICES
 THOMAS V. NGO, P.E.
 # 062-058379

Thomas V. Ngo
 DATE: 05/26/10
 SIGNATURE AND SEAL APPLIES TO DRWG.



**PRINTED BY THE AUTHORITY
 OF THE STATE OF ILLINOIS**

DISTRICT ONE - PLAN PREP ENGINEER: KEN ENG (847) 705-4247