

F.A.P. RTE.	SECTION	COUNTY	TOTAL SHEETS	SHEET NO.
347	4 R-T	KANE	20*	1
FED. ROAD DIST. NO. 1	ILLINOIS	CONTRACT NO. 60K16		
D-91-442-10			*20+1=21	

STATE OF ILLINOIS
DEPARTMENT OF TRANSPORTATION
DIVISION OF HIGHWAYS
PROPOSED
HIGHWAY PLANS
F.A.P. 347 (ILLINOIS ROUTE 38)
SECTION: 4 R-T
AT PECK ROAD
DRAINAGE IMPROVEMENT

FOR INDEX OF SHEETS, SEE SHEET NO. 2

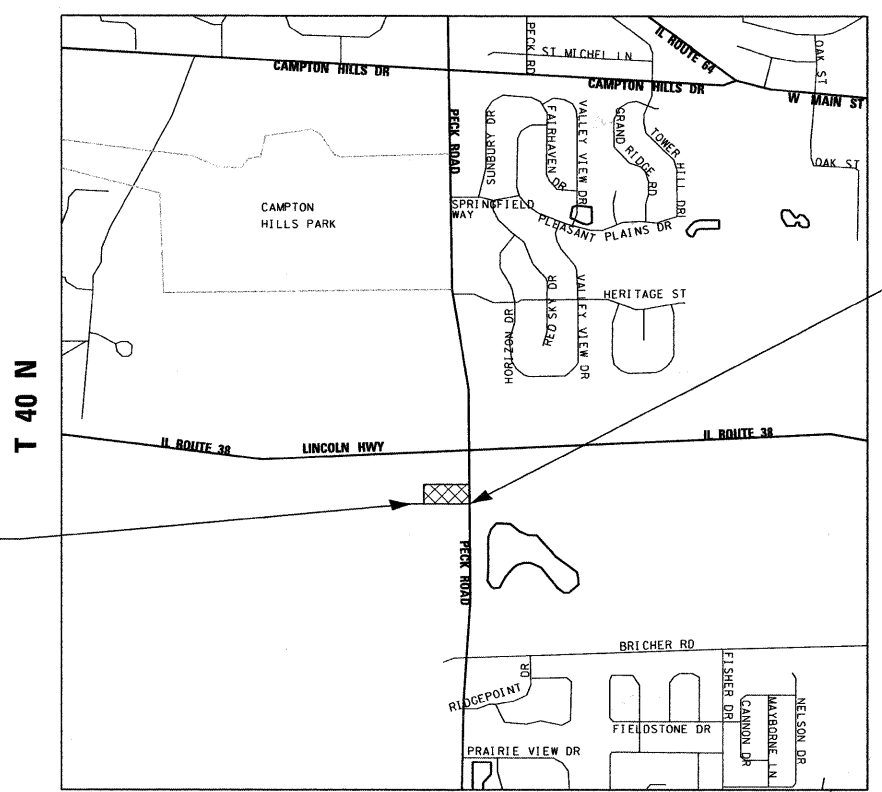


LOCATION OF SECTION INDICATED THUS: —

IMPROVEMENT LOCATED WITHIN THE CITY OF ST. CHARLES

KANE COUNTY
C-91-442-10

R 8 E



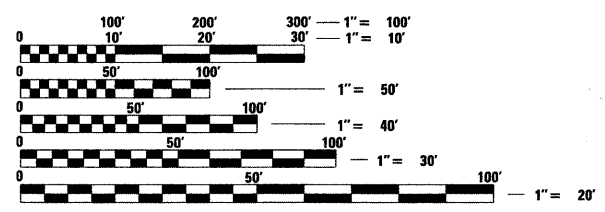
T 40 N



IMPROVEMENT ENDS
 STA. 21 + 00.00

IMPROVEMENT BEGINS
 STA. 12 + 56.78

TRAFFIC DATA
PECK ROAD
 2007 ADT = 7,400
 SPEED LIMIT = 45 MPH



FULL SIZE PLANS HAVE BEEN PREPARED USING STANDARD ENGINEERING SCALES. REDUCED SIZED PLANS WILL NOT CONFORM TO STANDARD SCALES. IN MAKING MEASUREMENTS ON REDUCED PLANS, THE ABOVE SCALES MAY BE USED.

J.U.L.I.E.
 JOINT UTILITY LOCATION INFORMATION FOR EXCAVATION
 1-800-892-0123
 OR 811

SCALE: NTS

ST. CHARLES TOWNSHIP

GROSS LENGTH OF PROJECT = 494 FT = 0.09 MILE
NET LENGTH OF PROJECT = 494 FT = 0.09 MILE

CONTRACT NO. 60K16

STATE OF ILLINOIS
DEPARTMENT OF TRANSPORTATION
DIVISION OF HIGHWAYS

SUBMITTED MAY 26 2010

Diana M. O'Keefe DEPUTY DIRECTOR OF HIGHWAYS, REGION ENGINEER

June 25 2010
Scott E. Stitt, P.E. acting ENGINEER OF DESIGN AND ENVIRONMENT

June 25 2010
Christine M. Reed DIRECTOR OF HIGHWAYS, CHIEF ENGINEER




200 22ND Street, Suite 216, Lombard, IL 60148
 630.705.0110 voice, 630.839.2566 fax
 www.mps-il.com

MILLENNIA PROFESSIONAL SERVICES

MILLENNIA PROFESSIONAL SERVICES
 THOMAS V. NGO, P.E.
 # 062-058379

Thomas V. Ngo
 DATE: 05/26/10
 SIGNATURE AND SEAL APPLIES TO DRWG.



PRINTED BY THE AUTHORITY
OF THE STATE OF ILLINOIS

DISTRICT ONE - PLAN PREP ENGINEER: KEN ENG (847) 705-4247

INDEX OF SHEETS

- 1 COVER SHEET
- 2 INDEX OF SHEETS, HIGHWAY STANDARDS, GENERAL NOTES, AND COMMITMENTS
- 3 SUMMARY OF QUANTITIES
- 4 TYPICAL SECTION
- 5 ALIGNMENTS TIES AND BENCHMARKS
- 6 EXISTING ROADWAY PLAN
- 7-8 ROADWAY PLAN
- 9 EROSION CONTROL PLAN
- 10-11 DRAINAGE PLAN
- 11A PLAT OF HIGHWAYS (FOR INFORMATION ONLY)
- 12 CROSS SECTIONS - IDOT ENTRANCE
- 13-18 CROSS SECTIONS - DITCH LINE
- 19 DRIVEWAY DETAILS DISTANCE BETWEEN ROW AND FACE OF CURB < 15' (4.5 m) (BD-02)
- 20 TRAFFIC CONTROL AND PROTECTION FOR SIDE ROADS, INTERSECTIONS, AND DRIVEWAYS (TC-10)

LIST OF ILLINOIS DOT HIGHWAY STANDARDS

- 280001-05 TEMPORARY EROSION CONTROL SYSTEMS
- 542101-02 REINFORCED CONCRETE END SECTIONS FOR PIPE CULVERTS 15"(375mm) THRU 36" (900mm) DIA. AT RIGHT ANGLES WITH ROADWAY
- 542116-02 REINFORCED CONCRETE END SECTIONS FOR MULTIPLE (2&3 PIPE CULVERTS 15"(375mm) THRU 36" (900mm) DIA. AT RIGHT ANGLES WITH ROADWAY
- 542311-01 GRATING FOR CONCRETE FLARED END SECTION (FOR 24" (600mm) THRU 54" (1350mm) PIPE)
- 602011-01 CATCH BASIN TYPE C
- 602401-02 MANHOLE TYPE A 6' (1.8m) DIAMETER
- 604036-02 GRATE TYPE B
- 640001-01 SIGHT SCREEN CHAIN LINK FENCE
- 701106-02 OFF-RD OPERATIONS, MULTILANE, MORE THAN 15' (4.5m) AWAY
- 701301-03 LANE CLOSURE, 2L, 2W, SHORT TIME OPERATIONS
- 701901-01 TRAFFIC CONTROL DEVICES

GENERAL NOTES

- 1 BEFORE STARTING ANY EXCAVATION, THE CONTRACTOR SHALL CALL "J.U.L.I.E." AT 800-892-0123 FOR FIELD LOCATIONS OF BURIED ELECTRIC, TELEPHONE, AND GAS FACILITIES. 48 HOUR NOTIFICATION IS REQUIRED.
- 2 THE CONTRACTOR SHALL COORDINATE CONSTRUCTION ACTIVITIES WITH THE UTILITY COMPANIES, AND CITY OF ST CHARLES.
- 3 THE CONTRACTOR WILL NOT BE ALLOWED TO SET UP A YARD OR FIELD OFFICE ON STATE PROPERTY WITHOUT WRITTEN PERMISSION FROM THE DEPARTMENT.
- 4 THE CONTRACTOR SHALL BE RESPONSIBLE FOR VERIFYING ALL DIMENSIONS AND CONDITIONS EXISTING IN THE FIELD PRIOR TO CONSTRUCTION AND ORDERING MATERIALS.
- 5 THE CONTRACTOR SHALL CONTACT THE DISTRICT ONE TRAFFIC CONTROL SUPERVISOR AT (847) 705-4470 A MINIMUM OF 72 HOURS IN ADVANCE OF BEGINNING WORK.
- 6 THE CONTRACTOR SHALL BE REQUIRED TO PROVIDE ACCESS TO ABUTTING PROPERTY AT ALL TIMES DURING THE CONSTRUCTION OF THIS PROJECT.
- 7 DO NOT SCALE PLANS FOR CONSTRUCTION DIMENSIONS.
- 8 TEMPORARY EROSION CONTROL MEASURES IN ACCORDANCE WITH APPLICABLE DEPARTMENT STANDARDS WILL BE USED TO CONTROL EROSION AND SEDIMENTATION WHILE THE PROJECT IS UNDER CONSTRUCTION AND PRIOR TO ESTABLISHMENT OF PERMANENT MEASURES. PERMANENT MEASURES AS NECESSARY WILL BE PART OF THE COMPLETED PROJECT AND WILL BE USED TO PREVENT EROSION AND SEDIMENTATION AFTER THE COMPLETION OF THE CONSTRUCTION PROJECT. APPROPRIATE PAY ITEMS AND DETAILS IN THE PLANS AND SPECIFICATIONS HAVE BEEN IMPLEMENTED TO ADDRESS SELECTED EROSION AND SEDIMENT CONTROL MEASURES.
- 9 TEMPORARY EROSION CONTROL MEASURES SHALL BE CONSTRUCTED AS SHOWN ON THE PLANS AND AS DIRECTED BY THE ENGINEER. THE WORK SHALL BE COMPLETED IN ACCORDANCE WITH SECTION 280 OF THE STANDARD SPECIFICATIONS AND CONTRACT SPECIAL PROVISIONS. TEMPORARY EROSION CONTROL SEEDING SHALL BE PLACED IMMEDIATELY AT AREAS WHERE EARTH WORK ACTIVITIES HAVE BEEN COMPLETED AND AS DIRECTED BY THE ENGINEER.
- 10 PERMANENT MEASURES: SEEDING CLASS 2A AND EROSION CONTROL BLANKET SHALL BE PLACED AFTER WORK IS COMPLETED AT AREAS WHERE EARTH WORK ACTIVITIES HAVE BEEN COMPLETED AND AS DIRECTED BY THE ENGINEER.

COMMITMENTS

NO COMMITMENTS FOR THIS PROJECT

FILE NAME = P:\2009\ME\09006_VerVar_Phil\CADD\W013_IL38\Shs\03-DIG\K16-sh1-IL38-GNOTE.dgn
 PLOT SCALE = 1:8000 / IN.
 USER NAME = Millennium Professional Services



200 22ND Street, Suite 216, Lombard, IL 60148
 630.795.0110 voice, 630.839.2566 fax
 WWW.MPS-IL.COM
MILLENNIA PROFESSIONAL SERVICES

DESIGNED	CJD	REVISED	-
DRAWN	CJD	REVISED	-
CHECKED	TVN	REVISED	-
DATE	6/1/2010	REVISED	-

STATE OF ILLINOIS
DEPARTMENT OF TRANSPORTATION

ILLINOIS ROUTE 38		INDEX OF SHEETS, LIST OF IDOT		F.A.P. RTE.	SECTION	COUNTY	TOTAL SHEETS	SHEET NO.
AT PECK ROAD		HIGHWAY STANDARD, GENERAL NOTES, AND COMMITMENTS		347	4 R-T	KANE	20	2
SCALE: N/A	SHEET NO.	OF	SHEETS	STA.	TO STA.	CONTRACT NO. 60K16		
FED. ROAD DIST. NO. 1 ILLINOIS FED. AID PROJECT								

P:\2009\ME\09006_VerVar_Phil\CADD\W013_IL38\Shs\03-DIG\K16-sh1-IL38-GNOTE.dgn

SUMMARY OF QUANTITIES

CODE NO.	ITEM DESCRIPTION	UNIT	URBAN	
			TOTAL QUANTITY 100% STATE	CONSTRUCTION TYPE CODE
			Y007	DRAINAGE QUANTITY
20100110	TREE REMOVAL (6 TO 15 UNITS DIAMETER)	UNIT	3	3
20101000	TEMPORARY FENCE	FOOT	811	811
20101400	NITROGEN FERTILIZER NUTRIENT	POUND	48	48
20101500	PHOSPHORUS FERTILIZER NUTRIENT	POUND	48	48
20101600	POTASSIUM FERTILIZER NUTRIENT	POUND	48	48
20200100	EARTH EXCAVATION	CU YD	54	54
20201200	REMOVAL AND DISPOSAL OF UNSUITABLE MATERIAL	CU YD	100	100
20400800	FURNISHED EXCAVATION	CU YD	779	779
20800150	TRENCH BACKFILL	CU YD	18	18
21101615	TOPSOIL FURNISH AND PLACE, 4"	SQ YD	3813	3813
25000210	SEEDING, CLASS 2A	ACRE	0.8	0.8
25100630	EROSION CONTROL BLANKET	SQ YD	3813	3813
28000250	TEMPORARY EROSION CONTROL SEEDING	POUND	78.8	78.8
28000400	PERIMETER EROSION BARRIER	FOOT	129	129
28000500	INLET AND PIPE PROTECTION	EACH	4	4
28100127	STONE RIPRAP, CLASS B4	SQ YD	15	15
28200200	FILTER FABRIC	SQ YD	15	15
35100300	AGGREGATE BASE COURSE, TYPE A 4"	SQ YD	815	815
35501316	HOT-MIX ASPHALT BASE COURSE, 8"	SQ YD	815	815
40600200	BITUMINOUS MATERIALS (PRIME COAT)	TON	0.5	0.5
40603310	HOT-MIX ASPHALT SURFACE COURSE, MIX "C", N50	TON	94	94
54213660	PRECAST REINFORCED CONCRETE FLARED END SECTIONS 15"	EACH	4	4
54213681	PRECAST REINFORCED CONCRETE FLARED END SECTIONS 36"	EACH	1	1
54247170	GRATING FOR CONCRETE FLARED END SECTION 36"	EACH	1	1
55038200	STORM SEWERS TO BE CLEANED 24"	FOOT	78	78
67100100	MOBILIZATION	L SUM	1	1
60207000	CATCH BASINS, TYPE C, TYPE 8 GRATE	EACH	1	1
60223700	MANHOLES, TYPE A, 6'-DIAMETER, TYPE 1 FRAME, OPEN LID	EACH	1	1
60223800	MANHOLES, TYPE A, 6'-DIAMETER, TYPE 1 FRAME, CLOSED LID	EACH	1	1
66410300	CHAIN LINK FENCE REMOVAL	FOOT	830	830

* SPECIALTY ITEM

SUMMARY OF QUANTITIES

CODE NO.	ITEM DESCRIPTION	UNIT	URBAN	
			TOTAL QUANTITY 100% STATE	CONSTRUCTION TYPE CODE
			Y007	DRAINAGE QUANTITY
66410700	CHAIN LINK GATES (SPECIAL)	EACH	1	1
66400560	CHAIN LINK FENCE, 6' (SPECIAL)	FOOT	868	868
70100450	TRAFFIC CONTROL AND PROTECTION, STANDARD 701201	LSUM	1	1
542D0220	PIPE CULVERTS, CLASS D, TYPE 1 15"	FOOT	95	95
542D0229	PIPE CULVERTS, CLASS D, TYPE 1 24"	FOOT	25	25
542D0241	PIPE CULVERTS, CLASS D, TYPE 1 36"	FOOT	455	455
Z0055905	TEMPORARY CONSTRUCTION FENCE	FOOT	569	569
X0976500	END SECTIONS TO BE REMOVED	EACH	2	2
Z0013798	CONSTRUCTION LAYOUT	LSUM	1	1

FILE NAME = P:\2009\ME0906_Ver-Vor-Ph11\CADD\W013_IL38\Shets\03-DIG0K16-sh1-IL38-500.DGN
 USER NAME = Millennium Professional Services



200 22ND Street, Suite 216, Lombard, IL 60148
 630.705.0110 voice, 630.839.2566 fax
 WWW.MPS-IL.COM
MILLENNIA PROFESSIONAL SERVICES

DESIGNED - CJD	REVISED -
DRAWN - CJD	REVISED -
CHECKED - TVN	REVISED -
DATE - 6/1/2010	REVISED -

**STATE OF ILLINOIS
 DEPARTMENT OF TRANSPORTATION**

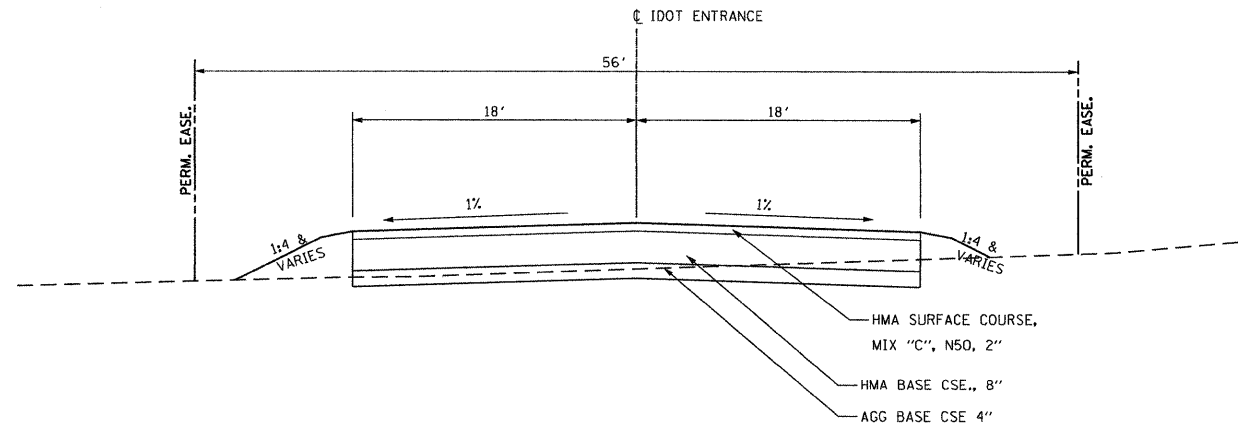
**ILLINOIS ROUTE 38
 AT PECK ROAD**

SUMMARY OF QUANTITIES

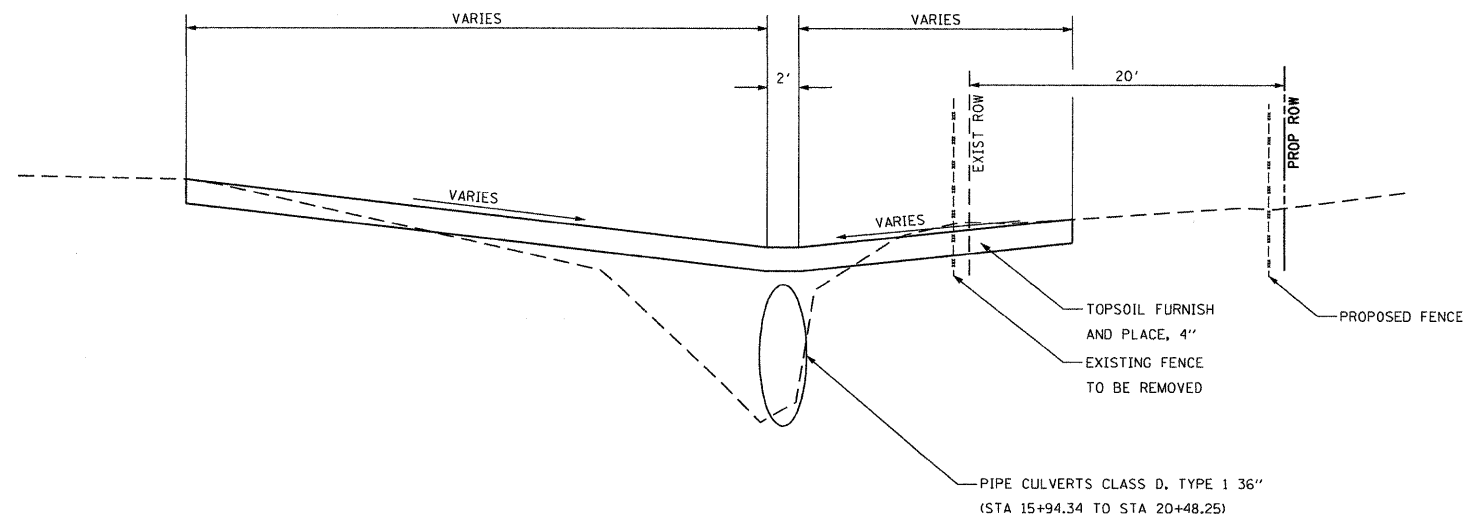
F.A.P. RTE. 347	SECTION 4 R-T	COUNTY KANE	TOTAL SHEETS 20	SHEET NO. 3
FED. ROAD DIST. NO. 1 ILLINOIS FED. AID PROJECT			CONTRACT NO. 60K16	

SCALE: NTS SHEET NO. OF SHEETS STA. TO STA.

P:\2009\ME0906_Ver-Vor-Ph11\CADD\W013_IL38\Shets\03-DIG0K16-sh1-IL38-500.DGN



PROPOSED TYPICAL SECTION
IDOT ENTRANCE
STA 50+17.30 TO STA 52+19.58



PROPOSED TYPICAL SECTION
DITCH
STA 15+94.34 TO STA 20+48.25

EARTH WORK SCHEDULE					
LOCATION		EARTH EXC (CUT) CU YD	EARTH EXC ADJ SHRINK 15% CU YD	EMBANK (FILL) CU YD	EARTH WORK BALANCE WASTE (+) SHORTAGE (-) CU YD
16+00	- 16+00	0.0	0	0.0	0.0
16+00	- 16+25	0.4	0	37.2	-36.8
16+25	- 16+32	0.4	0	50.8	-50.5
16+32.2	- 16+50	0.4	0	83.5	-83.2
16+50	- 16+75	0.5	0	126.1	-125.7
16+75	- 17+00	0.8	1	146.7	-146.1
17+00	- 17+25	1.5	1	168.2	-167.0
17+25	- 17+32	1.8	2	180.3	-178.7
17+32.2	- 17+50	3.9	3	208.1	-204.8
17+50	- 17+75	11.7	10	244.3	-234.4
17+75	- 18+25	26.8	23	320.2	-297.5
18+25	- 18+32	27.7	24	331.7	-308.1
18+32.2	- 18+50	29.1	25	359.6	-334.8
18+50	- 18+75	29.9	25	396.9	-371.4
18+75	- 19+00	30.2	26	434.0	-408.3
19+00	- 19+25	30.3	26	477.4	-451.6
19+25	- 19+44	37.2	32	509.9	-478.2
19+44.2	- 19+50	39.4	34	520.8	-487.3
19+50	- 19+75	40.3	34	572.2	-538.0
19+75	- 20+00	41.1	35	615.6	-580.7
20+00	- 20+25	42.8	36	654.5	-618.2
20+25	- 20+50	44.1	37	698.1	-660.6
20+50	- 0+00	44.1	37	698.1	-660.6
ACCESS DRIVEWAY					
50+37	- 50+37	0	0	0.0	0.0
50+37	- 50+47	0	0	8.6	-8.6
50+47	- 50+97	1	1	54.4	-53.2
50+97	- 51+50	7	6	71.0	-65.3
51+50	- 52+00	19	16	80.6	-64.1
TOTAL		63	54	779	-724.7

HMA MIXTURES REQUIREMENT		VOIDS
MIXTURE TYPE		
DRIVEWAYS		
HMA SURFACE COURSE, MIX C, N50 (IL 9.5 MM); 2"		4% @ 50 GYR.
HMA BASE COURSE (HMA BINDER IL-19 MM); PE -6", CE -8" (2 LIFTS)		4% @ 50 GYR.

- MIXTURE NOTES:
1. THE UNIT WEIGHT USED TO CALCULATE ALL HOT-MIX ASPHALT SURFACE MIXTURES IS 112 LBS/SQ YD/IN
 2. THE "AC TYPE" FOR POLYMERIZED HMA MIXES SHALL BE "SBS/SBR PG70-22" AND FOR NON-POLYMERIZED HMA THE "AC TYPE" SHALL BE "PG 64-22" UNLESS MODIFIED BY DISTRICT ONE SPECIAL PROVISIONS. FOR "PERCENT OF RAP" SEE DISTRICT ONE SPECIAL PROVISIONS.

P:\2009\ME09006-Var\Var-Phil\CADD\W013-IL38\Shs\04-DIBK\B-ant-IL38-TYP.dgn
 USER: PHILIP MILLENNIA PROFESSIONAL SERVICES



200 22ND Street, Suite 216, Lombard, IL 60148
630.785.8110 voice, 630.839.2566 fax
WWW.MPS-IL.COM

MILLENNIA PROFESSIONAL SERVICES

DESIGNED - CJD	REVISED -
DRAWN - CJD	REVISED -
CHECKED - TVN	REVISED -
DATE - 5/18/2010	REVISED -

STATE OF ILLINOIS
DEPARTMENT OF TRANSPORTATION

ILLINOIS ROUTE 38
AT PECK ROAD

MAINLINE TYPICAL SECTIONS

F.A.P. RTE. 347	SECTION 4 R-T	COUNTY KANE	TOTAL SHEETS 20	SHEET NO. 4
CONTRACT NO. 60K16				

SCALE: SHEET NO. OF SHEETS STA. TO STA.

FED. ROAD DIST. NO. 1 ILLINOIS FED. AID PROJECT

ROUTE IL 38

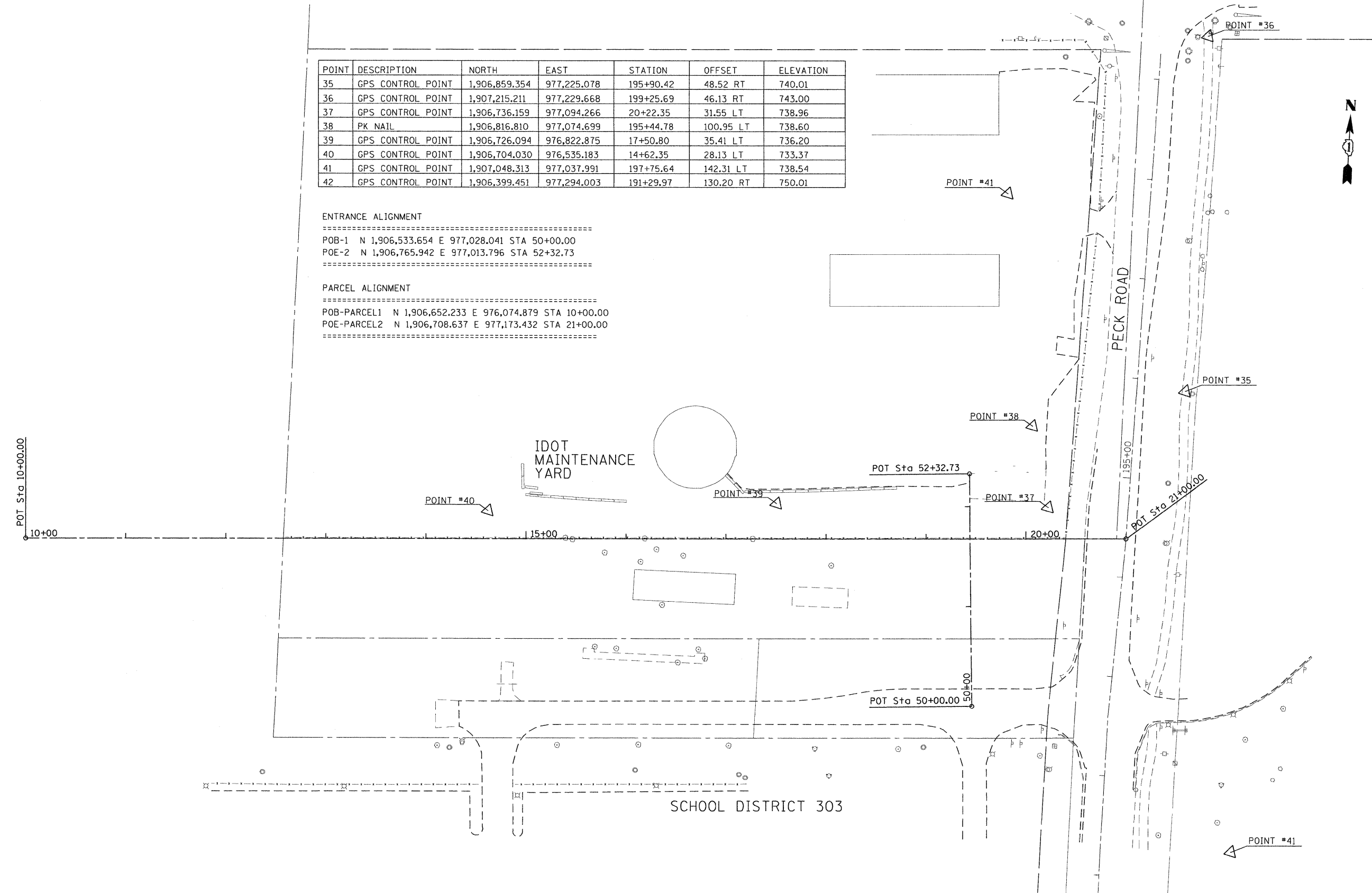
POINT	DESCRIPTION	NORTH	EAST	STATION	OFFSET	ELEVATION
35	GPS CONTROL POINT	1,906,859.354	977,225.078	195+90.42	48.52 RT	740.01
36	GPS CONTROL POINT	1,907,215.211	977,229.668	199+25.69	46.13 RT	743.00
37	GPS CONTROL POINT	1,906,736.159	977,094.266	20+22.35	31.55 LT	738.96
38	PK NAIL	1,906,816.810	977,074.699	195+44.78	100.95 LT	738.60
39	GPS CONTROL POINT	1,906,726.094	976,822.875	17+50.80	35.41 LT	736.20
40	GPS CONTROL POINT	1,906,704.030	976,535.183	14+62.35	28.13 LT	733.37
41	GPS CONTROL POINT	1,907,048.313	977,037.991	197+75.64	142.31 LT	738.54
42	GPS CONTROL POINT	1,906,399.451	977,294.003	191+29.97	130.20 RT	750.01

ENTRANCE ALIGNMENT

POB-1 N 1,906,533.654 E 977,028.041 STA 50+00.00
 POE-2 N 1,906,765.942 E 977,013.796 STA 52+32.73

PARCEL ALIGNMENT

POB-PARCEL1 N 1,906,652.233 E 976,074.879 STA 10+00.00
 POE-PARCEL2 N 1,906,708.637 E 977,173.432 STA 21+00.00



FILE NAME : F:\2009\ME\090806_Ver-Var-Phil\CADD\013_IL38_Shts\0160K16-sh1-atb-01.dgn
 PLOT SCALE : 1"=50'
 USER NAME : Millennium Professional Services

200 22ND Street, Suite 214, Lombard, IL 60148
 630.705.0110 voice, 630.839.2566 fax
 WWW.MPS-IL.COM
MILLENNIA PROFESSIONAL SERVICES

DESIGNED - CJD	REVISED -
DRAWN - CJD	REVISED -
CHECKED - TVN	REVISED -
DATE - 6/1/2010	REVISED -

STATE OF ILLINOIS
DEPARTMENT OF TRANSPORTATION

ILLINOIS ROUTE 38
AT PECK ROAD

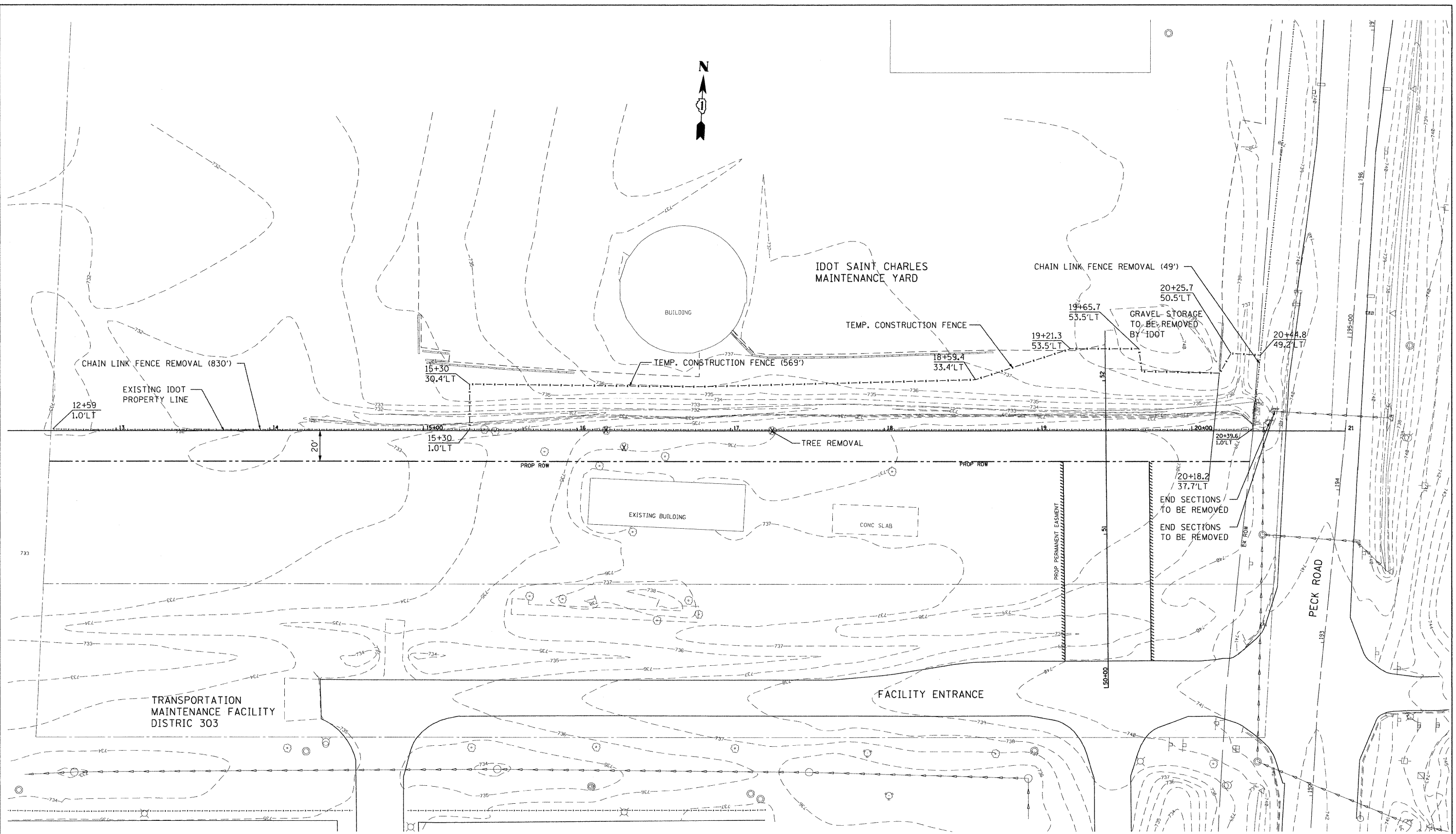
SCALE: 1"=50' SHEET NO. OF SHEETS STA. 10+00 TO STA. 21+00

F.A.P. RTE. 347	SECTION 4 R-T	COUNTY KANE	TOTAL SHEETS 20	SHEET NO. 5
CONTRACT NO. 60K16				

ATB-01

F:\2009\ME\090806_Ver-Var-Phil\CADD\013_IL38_Shts\0160K16-sh1-atb-01.dgn

FILE NAME = P:\2009\ME090206-Var-Var-Phin\CADD\013-IL38\Shets\DI60K16-shr-Ex-01.dgn
 PLOT SCALE = 3/8"=1'-0"
 USER NAME = Millennium Professional Services



200 22ND Street, Suite 216, Lombard, IL 60148
 630.705.0110 voice, 630.839.2566 fax
 WWW.MPS-IL.COM
MILLENNIA PROFESSIONAL SERVICES

DESIGNED - CJD	REVISED -
DRAWN - CJD	REVISED -
CHECKED - TVN	REVISED -
DATE - 6/1/2010	REVISED -

**STATE OF ILLINOIS
 DEPARTMENT OF TRANSPORTATION**

**ILLINOIS ROUTE 38
 AT PECK ROAD**

EXISTING ROADWAY PLAN

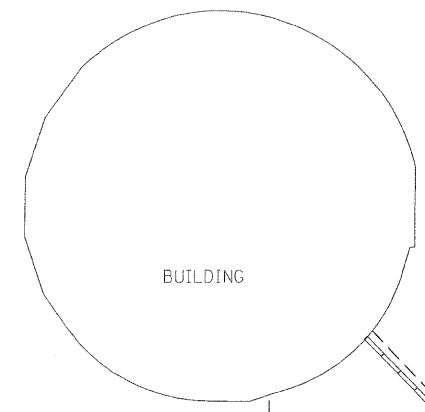
F.A.P. RTE. 347	SECTION 4 R-T	COUNTY KANE	TOTAL SHEETS 20	SHEET NO. 6
CONTRACT NO. 60K16				
FED. ROAD DIST. NO. 1 ILLINOIS FED. AID PROJECT				

SCALE: SHEET NO. OF SHEETS STA. TO STA.

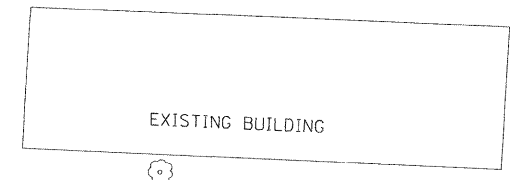
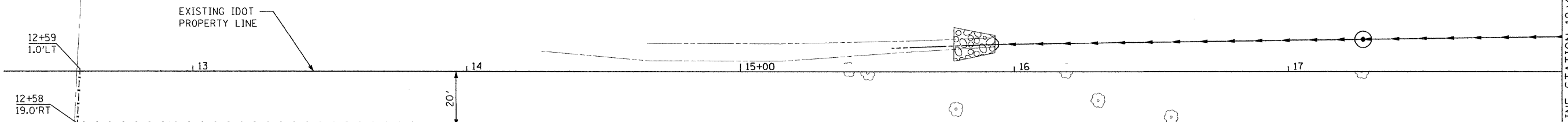
P:\2009\ME090206-Var-Var-Phin\CADD\013-IL38\Shets\DI60K16-shr-Ex-01.dgn



IDOT SAINT CHARLES
MAINTENANCE YARD



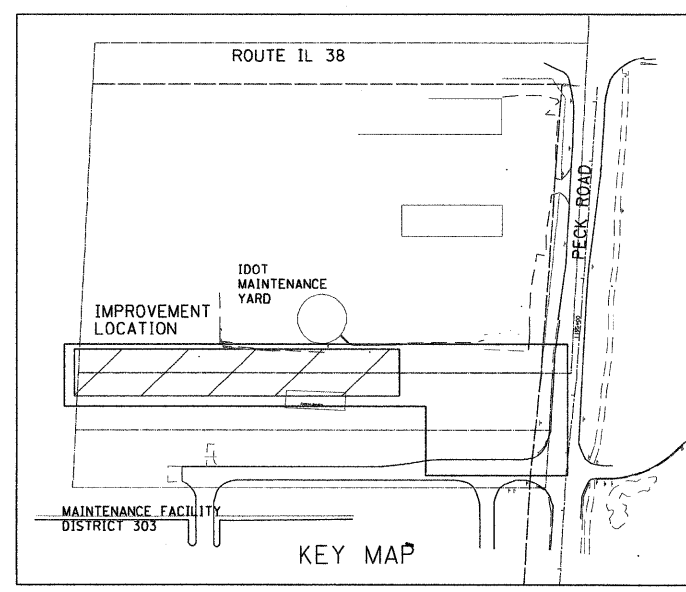
BUILDING



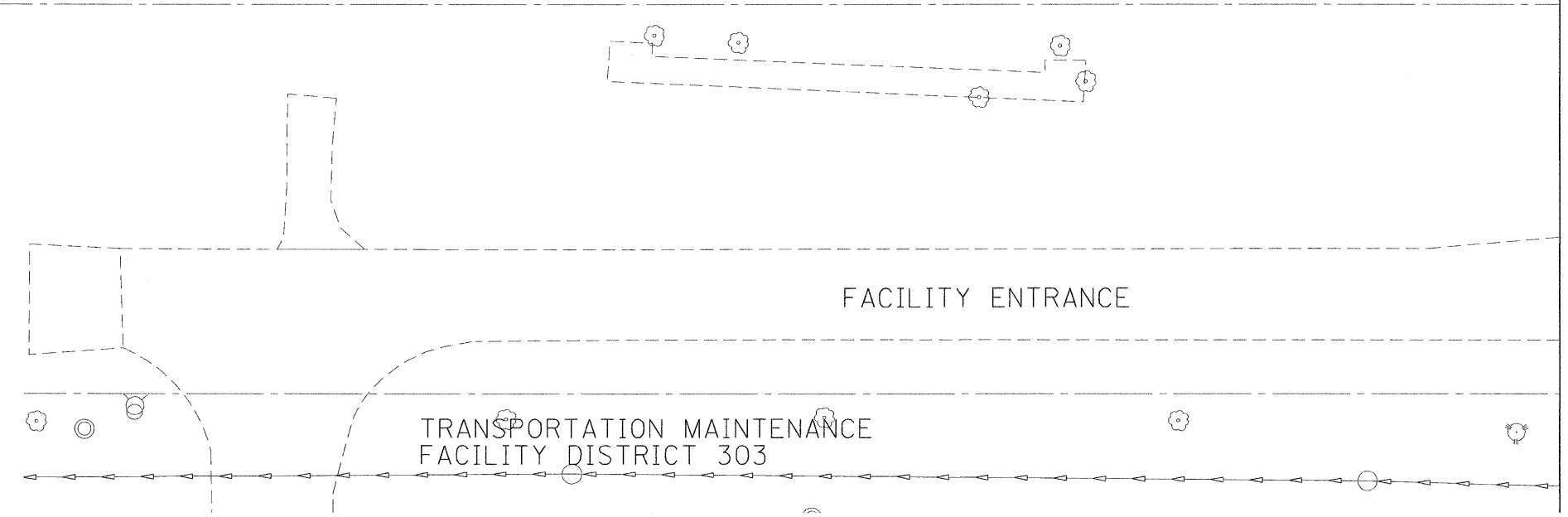
EXISTING BUILDING

CONC SL

MATCHLINE STATION 18+00



KEY MAP



FACILITY ENTRANCE

TRANSPORTATION MAINTENANCE
FACILITY DISTRICT 303

FILE NAME : P:\2009\ME09006_Ver\or-Phil\CADD\W013_IL38\Shs\0160\16-shr-pln-01_20.dgn
USER NAME : Millennium Professional Services



200 22ND Street, Suite 216, Lombard, IL 60148
630.705.0110 voice, 630.839.2566 fax
WWW.MPS-IL.COM
MILLENNIA PROFESSIONAL SERVICES

DESIGNED - CJD	REVISED -
DRAWN - CJD	REVISED -
CHECKED - TVN	REVISED -
DATE - 5/18/2010	REVISED -

**STATE OF ILLINOIS
DEPARTMENT OF TRANSPORTATION**

**ILLINOIS ROUTE 38
AT PECK ROAD**

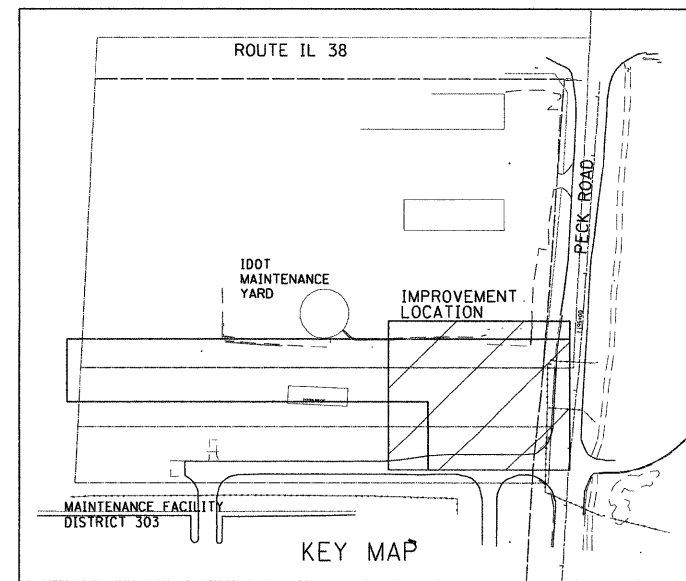
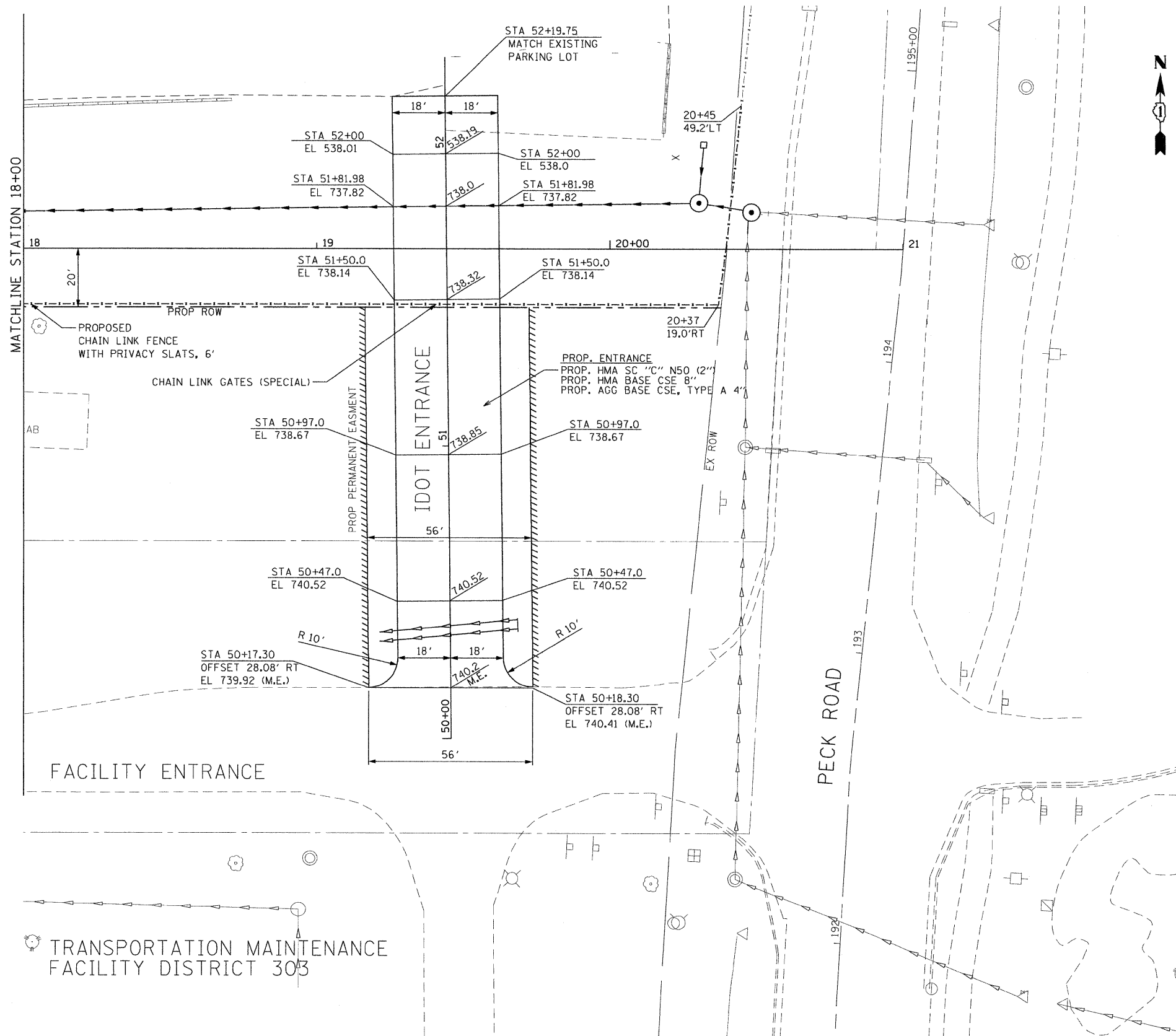
ROADWAY PLAN

SCALE: 1"=20' SHEET NO. OF SHEETS STA. 12+50 TO STA. 18+00

F.A.P. RTE.	SECTION	COUNTY	TOTAL SHEETS	SHEET NO.
347	4 R-T	KANE	20	7
CONTRACT NO. 60K16				

PLN-01

F:\2009\ME09006_Ver\or-Phil\CADD\W013_IL38\Shs\0160\16-shr-pln-01_20.dgn



FILE NAME = F:\2009\ME\09005_Var\Var_Plan\CADD\W013_IL38\Shas\168K16-ahr-pln-02_20.dgn
 USER NAME = Millennium Professional Services



200 22ND Street, Suite 216, Lombard, IL 60148
 630.705.8110 voice, 630.839.2566 fax
 WWW.MPS-IL.COM
MILLENNIA PROFESSIONAL SERVICES

DESIGNED - CJD	REVISED -
DRAWN - CJD	REVISED -
CHECKED - TVN	REVISED -
DATE - 5/18/2010	REVISED -

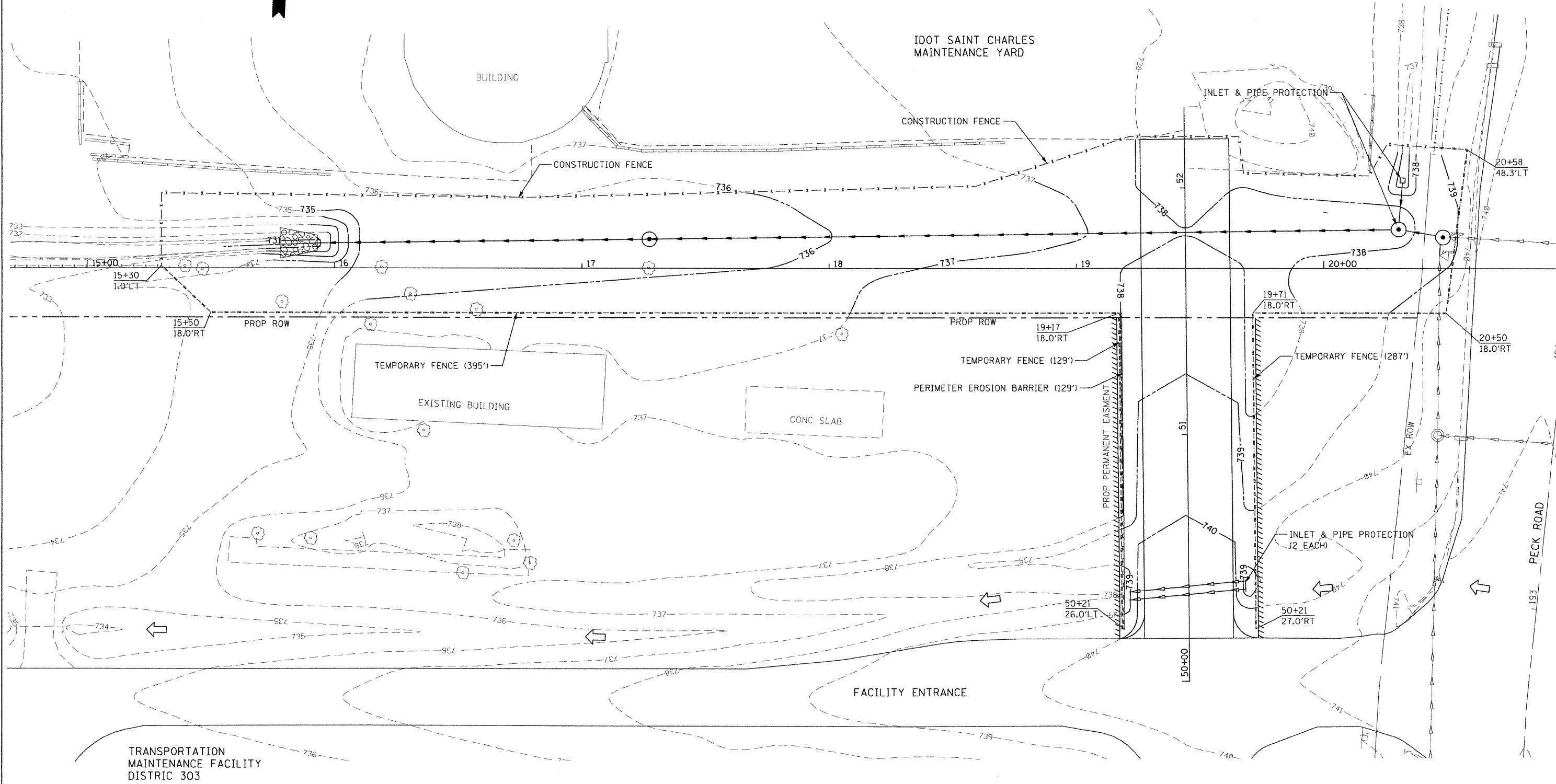
STATE OF ILLINOIS
DEPARTMENT OF TRANSPORTATION

ILLINOIS ROUTE 38
AT PECK ROAD
 SCALE: 1"=20' SHEET NO. OF SHEETS STA. 18+00 TO STA. 21+00

F.A.P. RTE. 347	SECTION 4 R-T	COUNTY KANE	TOTAL SHEETS 20	SHEET NO. 8
CONTRACT NO. 60K16				

PLN-02

F:\2009\ME\09005_Var\Var_Plan\CADD\W013_IL38\Shas\168K16-ahr-pln-02_20.dgn



P:\2009\ME09066-Var\Var-Phil\CADD\W013_IL38\Shs\0160K16-ent-Eros-01.dgn
 5/18/2010 10:58 AM
 USER: Phil
 MILLENNIA PROFESSIONAL SERVICES



200 22ND Street, Suite 216, Lombard, IL 60148
 630.785.0110 voice, 630.839.2566 fax
 WWW.MPS-IL.COM
MILLENNIA PROFESSIONAL SERVICES

DESIGNED - CJD	REVISED -
DRAWN - CJD	REVISED -
CHECKED - TVN	REVISED -
DATE - 5/18/2010	REVISED -

STATE OF ILLINOIS
DEPARTMENT OF TRANSPORTATION

ILLINOIS ROUTE 38
AT PECK ROAD

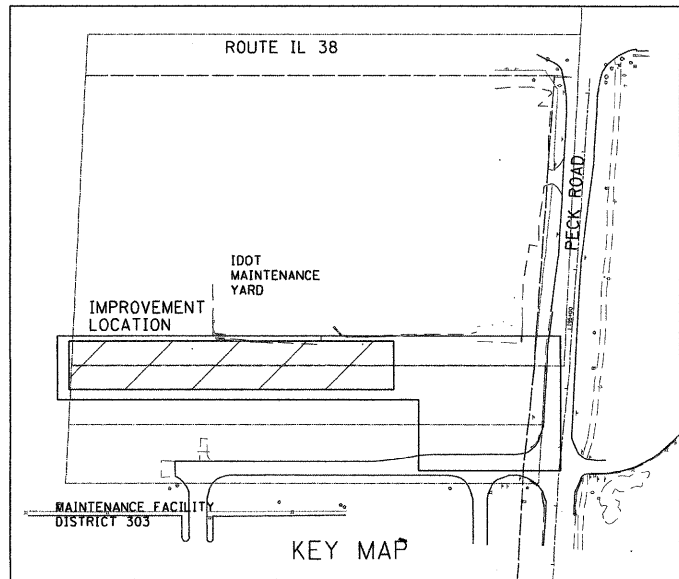
EROSION CONTROL PLAN

F.A.P. RTE.	SECTION	COUNTY	TOTAL SHEETS	SHEET NO.
347	4 R-T	KANE	20	9
CONTRACT NO. 60K16				

SCALE: SHEET NO. OF SHEETS STA. TO STA.

FED. ROAD DIST. NO. 1 ILLINOIS FED. AID PROJECT

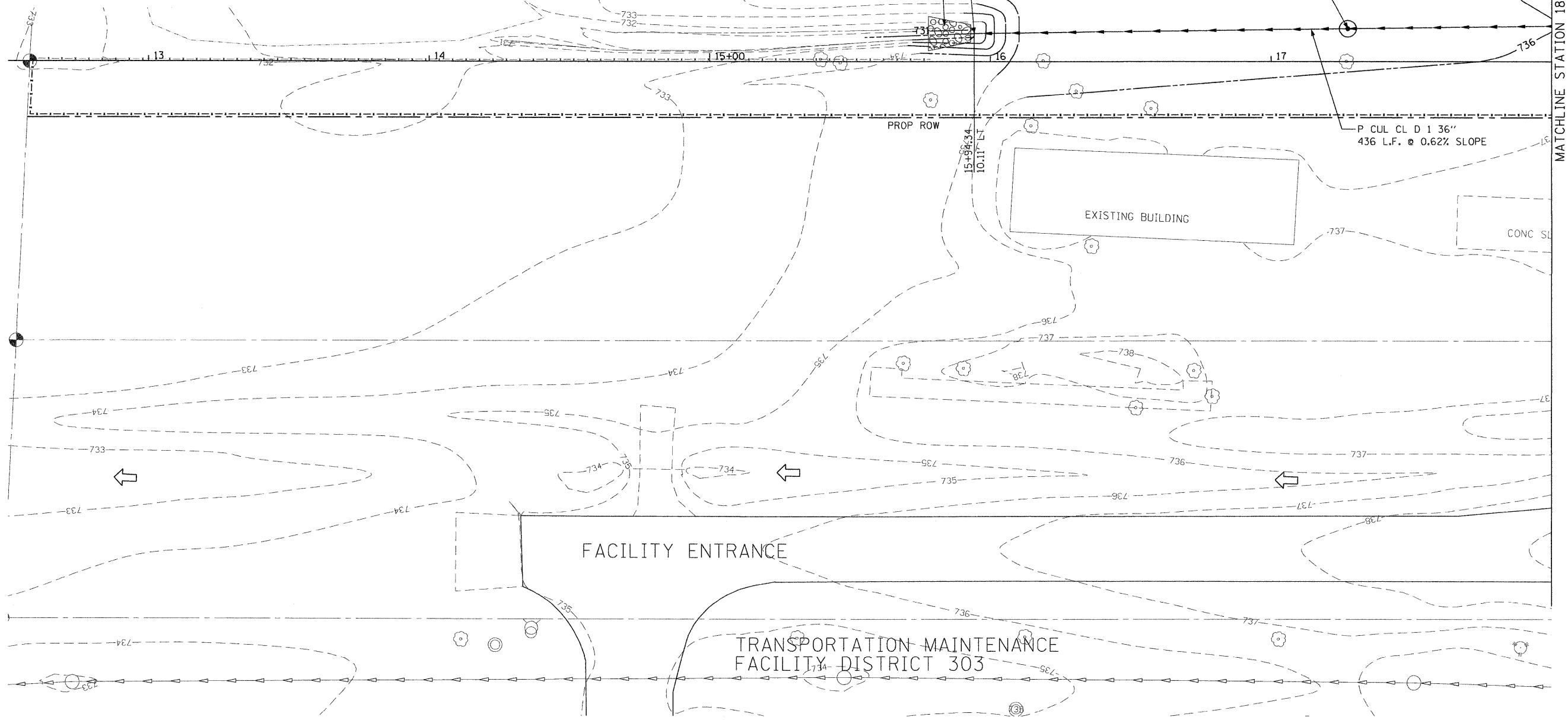
P:\2009\ME09066-Var\Var-Phil\CADD\W013_IL38\Shs\0160K16-ent-Eros-01.dgn



IDOT SAINT CHARLES MAINTENANCE YARD

PROP PRECAST REINFORCED CONC FES 36"
 PROP GRATING FOR CONC FES 36"
 INV = 730.8
 STONE RIPRAP, CLASS B4 (15 SOYD)
 FILTER FABRIC (15 SOYD)

MAN TA 6 DIA TIF OL
 STA 17+27, 3.61' LT
 RIM = 735.40
 INV E = 731.6
 INV W = 731.6



MATCHLINE STATION 18+00

FILE NAME = F:\2009\ME09006-Var\or-Phil\CADD\W013-IL38\Shs\DI60K16-shr-drain-01-28.dgn
 USER NAME = Millennium Professional Services



200 22ND Street, Suite 216, Lombard, IL 60148
 630.705.0110 voice, 630.839.2566 fax
 WWW.MPS-IL.COM
MILLENNIA PROFESSIONAL SERVICES

DESIGNED - CJD	REVISED -
DRAWN - CJD	REVISED -
CHECKED - TVN	REVISED -
DATE - 5/18/2010	REVISED -

**STATE OF ILLINOIS
 DEPARTMENT OF TRANSPORTATION**

**ILLINOIS ROUTE 38
 AT PECK ROAD**

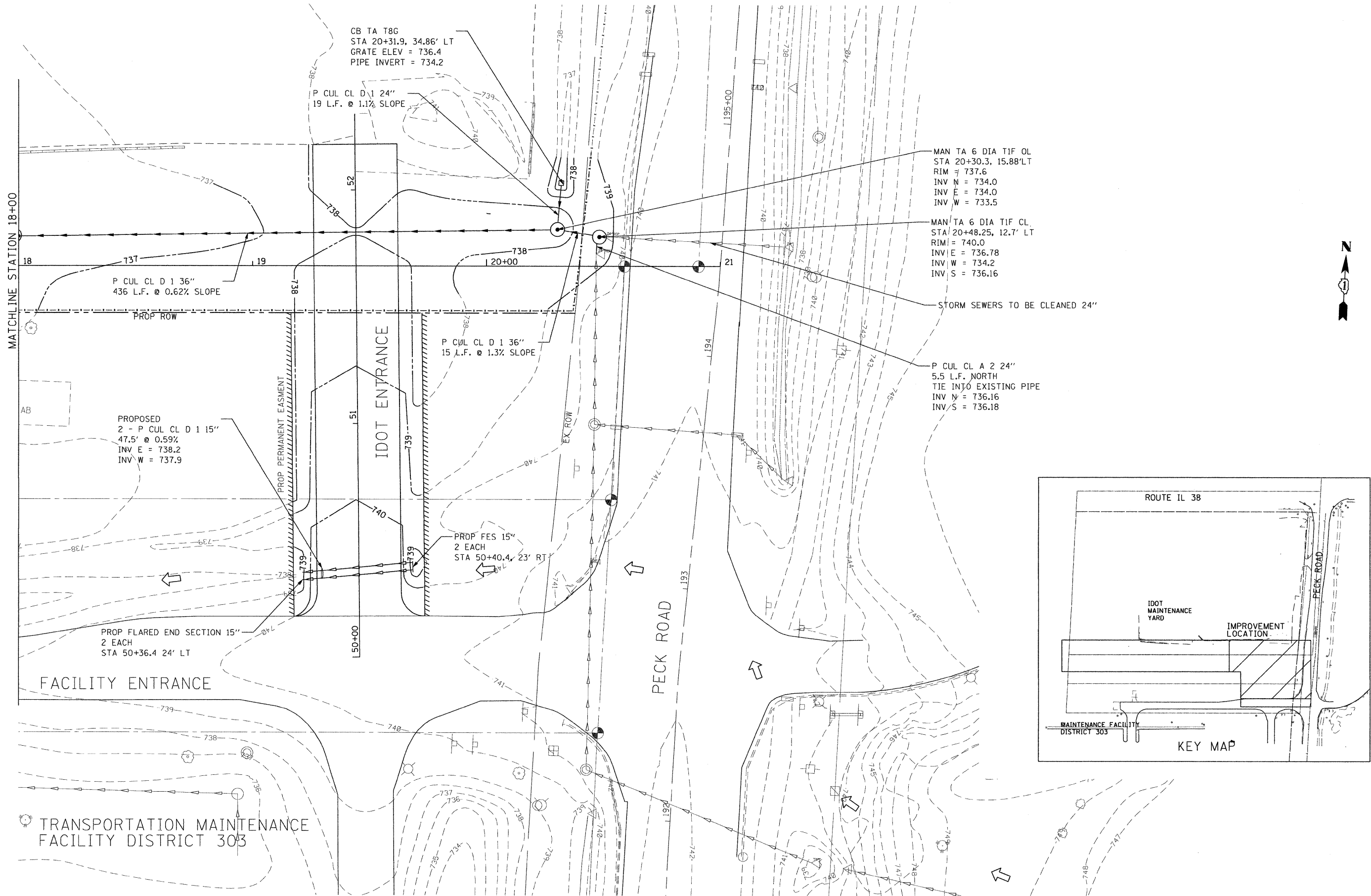
DRAINAGE PLAN

SCALE: 1"=20' SHEET NO. OF SHEETS STA. 12+50 TO STA. 18+00

F.A.P. RTE.	SECTION	COUNTY	TOTAL SHEETS	SHEET NO.
347	4 R-T	KANE	20	10
CONTRACT NO. 60K16				

DRN-01

F:\2009\ME09006-Var\or-Phil\CADD\W013-IL38\Shs\DI60K16-shr-drain-01-28.dgn



FILE NAME : P:\2009\VE\0906-Var\Var-Plan\CADD\W013-IL38\Shs\1616\1616-shi-drain-02.dgn
 USER NAME : Millennium Professional Services



200 22ND Street, Suite 216, Lombard, IL 60148
 630.705.0110 voice, 630.839.2566 fax
 WWW.MPS-IL.COM
MILLENNIA PROFESSIONAL SERVICES

DESIGNED - CJD	REVISED -
DRAWN - CJD	REVISED -
CHECKED - TVN	REVISED -
DATE - 5/18/2010	REVISED -

STATE OF ILLINOIS
DEPARTMENT OF TRANSPORTATION

ILLINOIS ROUTE 38
AT PECK ROAD

DRAINAGE PLAN

SCALE: 1"=20' SHEET NO. OF SHEETS STA. 18+00 TO STA. 21+00

F.A.P. RTE.	SECTION	COUNTY	TOTAL SHEETS	SHEET NO.
347	4 R-T	KANE	20	11
CONTRACT NO. 60K16				

DRN-02

P:\2009\VE\0906-Var\Var-Plan\CADD\W013-IL38\Shs\1616\1616-shi-drain-02.dgn

PART OF THE SE 1/4 OF SECTION 31, TOWNSHIP 40 N, RANGE 8 E. OF THE 3rd PM, KANE COUNTY, ILLINOIS

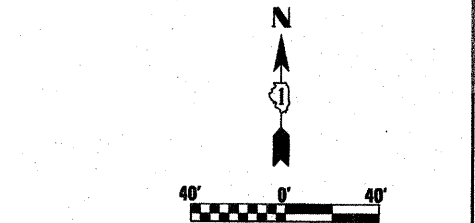
COORDINATE TABLE

PT#	NORTH	EAST
504	1906705.538	977113.451
506	1906665.506	976332.356
515	1906703.638	977113.412
528	1906645.482	976332.395
530	1906682.135	977047.558
531	1906552.530	977054.200
534	1906549.399	976998.287
535	1906679.268	976991.631
539	1906685.462	977112.473

NOTES:

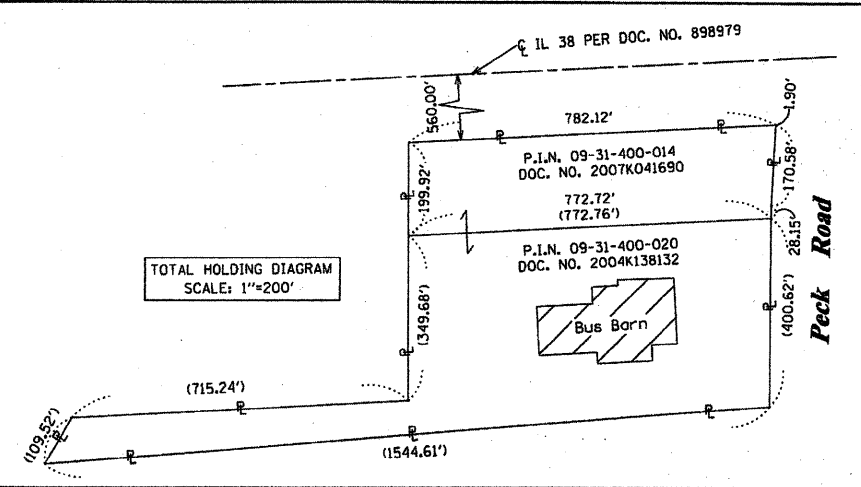
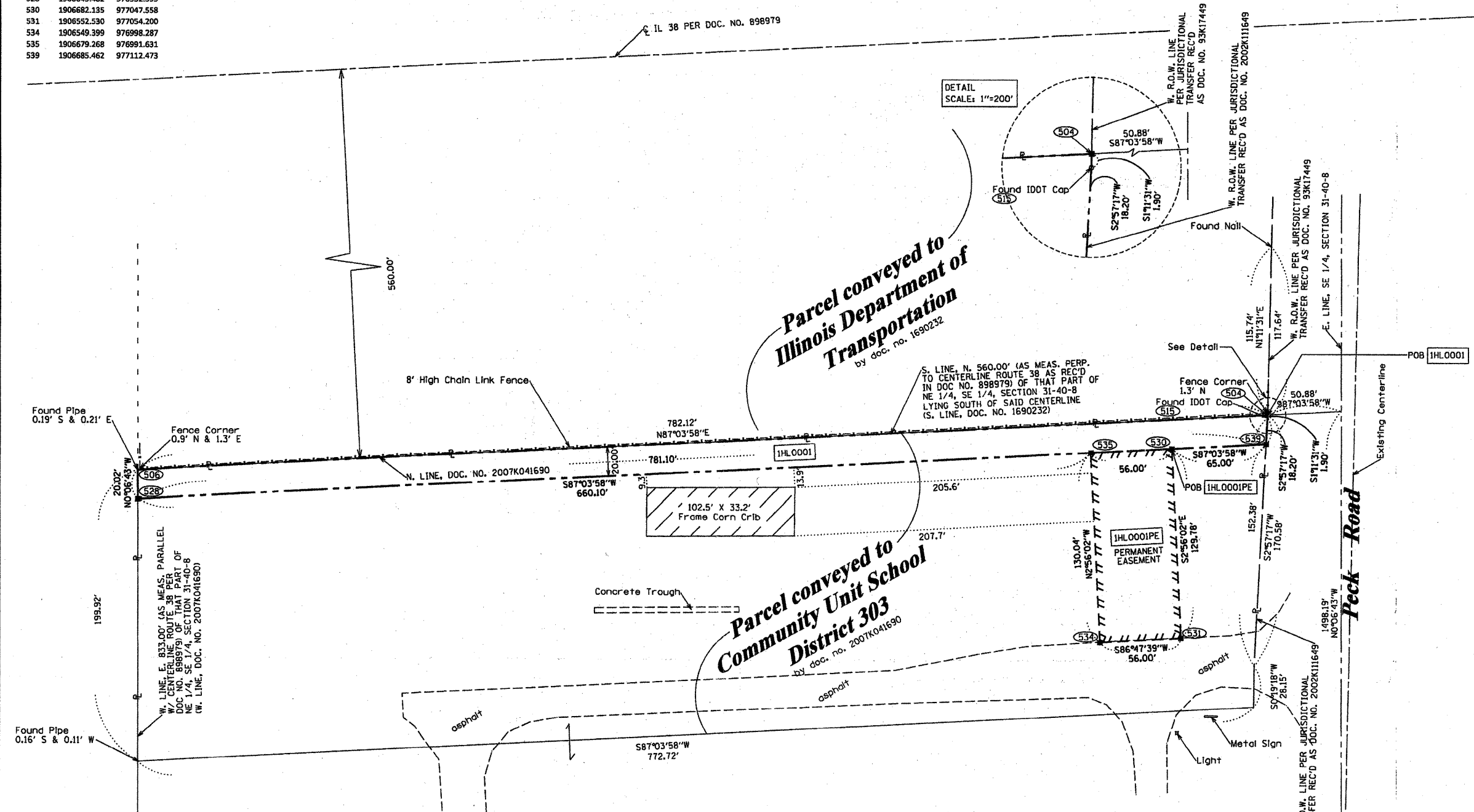
1. COORDINATES SHOWN HEREON ARE BASED ON THE ILLINOIS STATE PLANE COORDINATE SYSTEM EAST ZONE, NAD 83 (2007)

F.A. RTE.	SECTION	COUNTY	TOTAL SHEETS	SHEET NO.
347	4 R-T	KANE	20	11A
STATION		TO STATION		
FED. ROAD DIST. NO. 1		ILLINOIS FED. AID PROJECT		



LEGEND

- EXISTING CENTERLINE
- - - PROPOSED CENTERLINE
- EXISTING RIGHT OF WAY LINE
- - - PROPOSED RIGHT OF WAY LINE
- ==== PROPOSED PERMANENT EASEMENT LINE
- ==== PROPOSED TEMPORARY EASEMENT LINE
- SECTION LINE
- PROPERTY (DEED) LINE
- 121.45 MEASURED DIMENSION
- 123.45 (COMP) COMPUTED DIMENSION
- (123.45) RECORDED DIMENSION
- FOUND IRON PIPE OR IRON ROD
- SET 3/8 INCH IRON ROD
- PERMANENT SURVEY MONUMENT
- ⊕ I.D.O.T. STD. 2135 (TO BE SET BY OTHERS)
- + CUT CROSS FOUND OR SET
- SAME OWNERSHIP
- TEL EXISTING TELEPHONE SPLICE BOX
- LGT EXISTING STREET LIGHT
- MAIL BOX EXISTING MAIL BOX
- WELL EXISTING WELL HEAD
- STAKING OF PROPOSED RIGHT OF WAY. SET 3/8 INCH METAL ROD WITH DIVISION OF HIGHWAY SURVEY MARKER TO MONUMENT THE POSITION SHOWN, IDENTIFIED BY INSCRIPTION DATA AND SURVEYORS REGISTRATION NUMBER.
- STAKING OF PROPOSED RIGHT OF WAY IN CULTIVATED AREAS. SET 3/8 INCH METAL ROD WITH DIVISION OF HIGHWAY SURVEY MARKER 20 INCHES BELOW GROUND SURFACE TO MONUMENT THE POSITION SHOWN, IDENTIFIED BY INSCRIPTION DATA AND SURVEYORS REGISTRATION NUMBER.



FOR INFORMATION ONLY

REVISED: ADDED PERMANENT EASEMENT PER CLIENT, 1/11/2010

PARCEL NUMBER	OWNER	TOTAL HOLDINGS ACRES	PART TAKEN ACRES	AREA IN EXISTING R.O.W. ACRES	REMAINDER AREA ACRES	EASEMENT AREA ACRES	EASEMENT SQUARE FEET	EASEMENT PURPOSE	PERMANENT INDEX NUMBER	PROPERTY ACQUIRED BY
1HLO001	COMMUNITY UNIT SCHOOL DISTRICT 303	11.888	0.359	N/A	11.529	0.167	N/A	PERMANENT RIGHT OF WAY	09-31-400-014 09-31-400-020	

STATE OF ILLINOIS)
COUNTY OF WILL) SS

THIS IS TO CERTIFY THAT RUETTIGER, TONELLI & ASSOCIATES, INC., AN ILLINOIS DESIGN FIRM, HAS SURVEYED THE PLAT OF HIGHWAYS SHOWN HEREON IN SECTION 31, TOWNSHIP 40 NORTH, RANGE 8 EAST OF THE THIRD PRINCIPAL MERIDIAN, KANE COUNTY, THAT THE SURVEY IS TRUE AND COMPLETE AS SHOWN TO THE BEST OF MY KNOWLEDGE AND BELIEF, THAT THE PLAT CORRECTLY REPRESENTS SAID SURVEY, THAT ALL MONUMENTS FOUND AND ESTABLISHED ARE OF PERMANENT QUALITY AND OCCUPY THE POSITIONS SHOWN THEREON AND THAT THE MONUMENTS ARE SUFFICIENT TO ENABLE THE SURVEY TO BE RETRACED, MADE FOR THE DEPARTMENT OF TRANSPORTATION, STATE OF ILLINOIS.

DATED AT JOLIET, ILLINOIS THIS 11th DAY OF JANUARY, 2010 A.D.

RONALD F. HODGEN P.L.S. NO. 2639
MY LICENSE EXPIRES 11-30-2010.

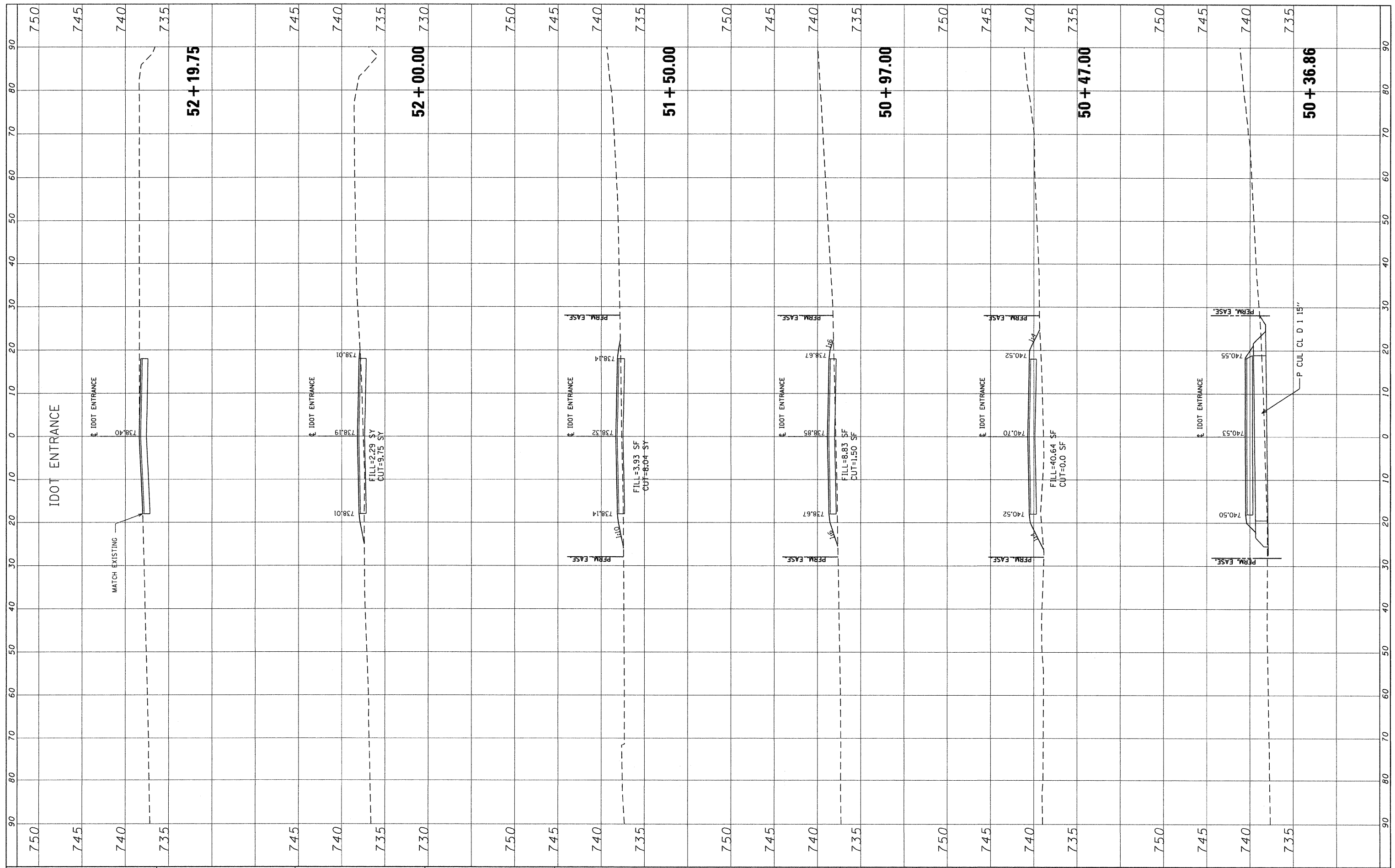
RUETTIGER, TONELLI & ASSOCIATES, INC.
Land Surveyors/Engineers/Planners/Landscape Architects/G.I.S. Consultants
214 ONEIDA STREET
JOLIET, ILLINOIS 60435
PH. (815) 744-6600 FAX (815) 744-0101

ILLINOIS DEPARTMENT OF TRANSPORTATION
PLAT OF HIGHWAYS
ST. CHARLES MAINTENANCE YARD
KANE COUNTY
JOB NO. R-91-011-10

RECEIVED
JAN 11 2010
PLATS & LEGALS

FINAL SURVEY	SURVEYED	BY	DATE
NOTE BOOK	PLOTTED		
NO.	TEMPLATE		
	AREAS CHECKED		

ORIGINAL SURVEY	SURVEYED	BY	DATE
NOTE BOOK	PLOTTED		
NO.	TEMPLATE		
	AREAS CHECKED		



FILE NAME = P:\2009\ME29006_Var\Var-Phil\CADD\W013_1L38\Sh...

USER NAME = cdean
 AD160K16-PXS-Drive.dgn
 PLOT SCALE = 10.0000' / IN.
 PLOT DATE = 5/19/2010

DESIGNED -
 DRAWN -
 CHECKED -
 DATE -

REVISED -
 REVISED -
 REVISED -
 REVISED -

**STATE OF ILLINOIS
 DEPARTMENT OF TRANSPORTATION**

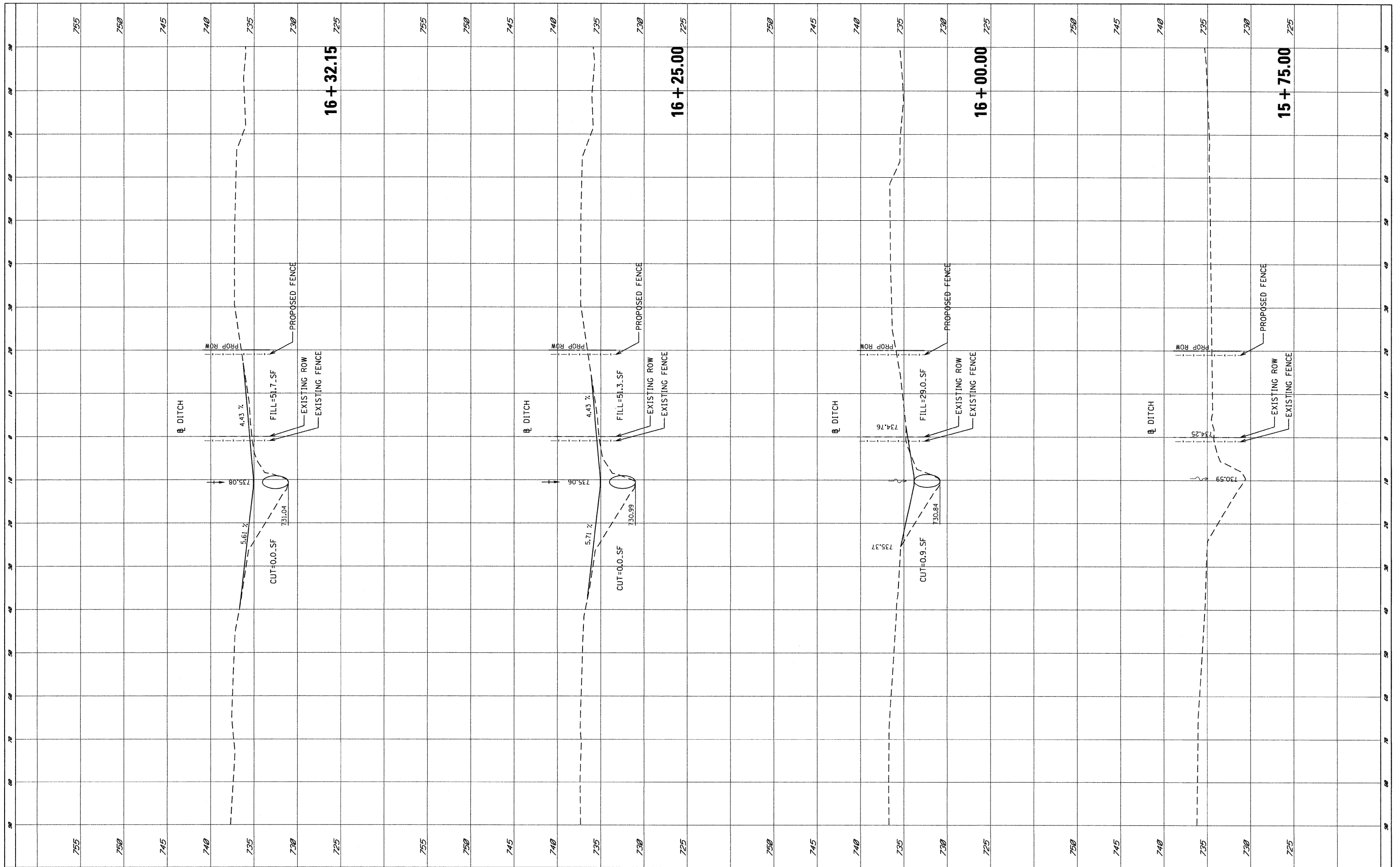
CROSS SECTION - IDOT ENT.

SCALE: SHEET NO. OF SHEETS STA. 50+36.86 TO STA. 52+19.75

F.A.P. RTE.	SECTION	COUNTY	TOTAL SHEETS	SHEET NO.
347	4 R-T	KANE	20	12
CONTRACT NO. 60K16				
FED. ROAD DIST. NO. ILLINOIS FED. AID PROJECT				

FINAL SURVEY	SURVEYED	BY	DATE
NOTE BOOK	PLOTTED		
AREAS CHECKED	TEMPLATE		
NO.	AREAS CHECKED		

ORIGINAL SURVEY	SURVEYED	BY	DATE
NOTE BOOK	PLOTTED		
AREAS CHECKED	TEMPLATE		
NO.	AREAS CHECKED		



FILE NAME = P:\2009\ME09006_Var\Var-Phi\CADD\W013_IL38\Sh\160K16-PX5-Pipe.dgn

USER NAME = Thomas
 DESIGNED -
 DRAWN -
 PLOT SCALE = 10.0000' / IN.
 CHECKED -
 PLOT DATE = 5/14/2010

REVISD -
 REVISED -
 REVISED -
 REVISED -

**STATE OF ILLINOIS
 DEPARTMENT OF TRANSPORTATION**

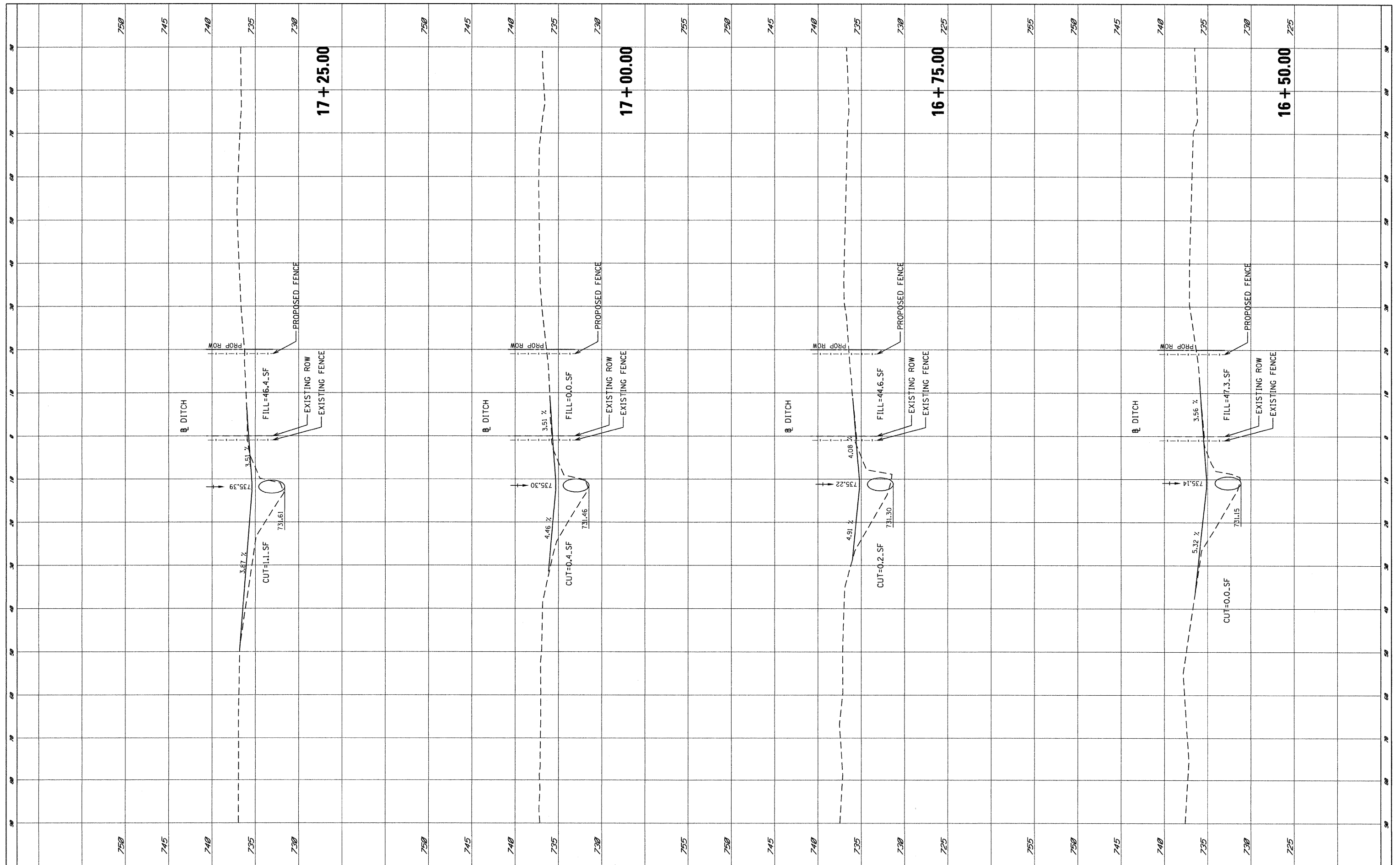
CROSS-SECTION-DITCH

SCALE: SHEET NO. OF SHEETS STA. 15+75.00 TO STA. 16+32.15

F.A.P. RTE. 347	SECTION 4R-T	COUNTY KANE	TOTAL SHEETS 20	SHEET NO. 13
FED. ROAD DIST. NO. ILLINOIS FED. AID PROJECT			CONTRACT NO. 60K16	

FINAL SURVEY	SURVEYED	BY	DATE
NOTE BOOK	PLOTTED		
NO.	TEMPLATE		
	AREAS CHECKED		

ORIGINAL SURVEY	SURVEYED	BY	DATE
NOTE BOOK	PLOTTED		
NO.	TEMPLATE		
	AREAS CHECKED		



FILE NAME = P:\2009\ME09006_Var\Var_Plan\CADD\W013_IL38\Sh...

USER NAME = Thomas
 \D160K16-PXS-Pipe.dgn
 PLOT SCALE = 10,0000' / IN.
 PLOT DATE = 5/14/2010

DESIGNED -
 DRAWN -
 CHECKED -
 DATE -

REVISED -
 REVISED -
 REVISED -
 REVISED -

**STATE OF ILLINOIS
 DEPARTMENT OF TRANSPORTATION**

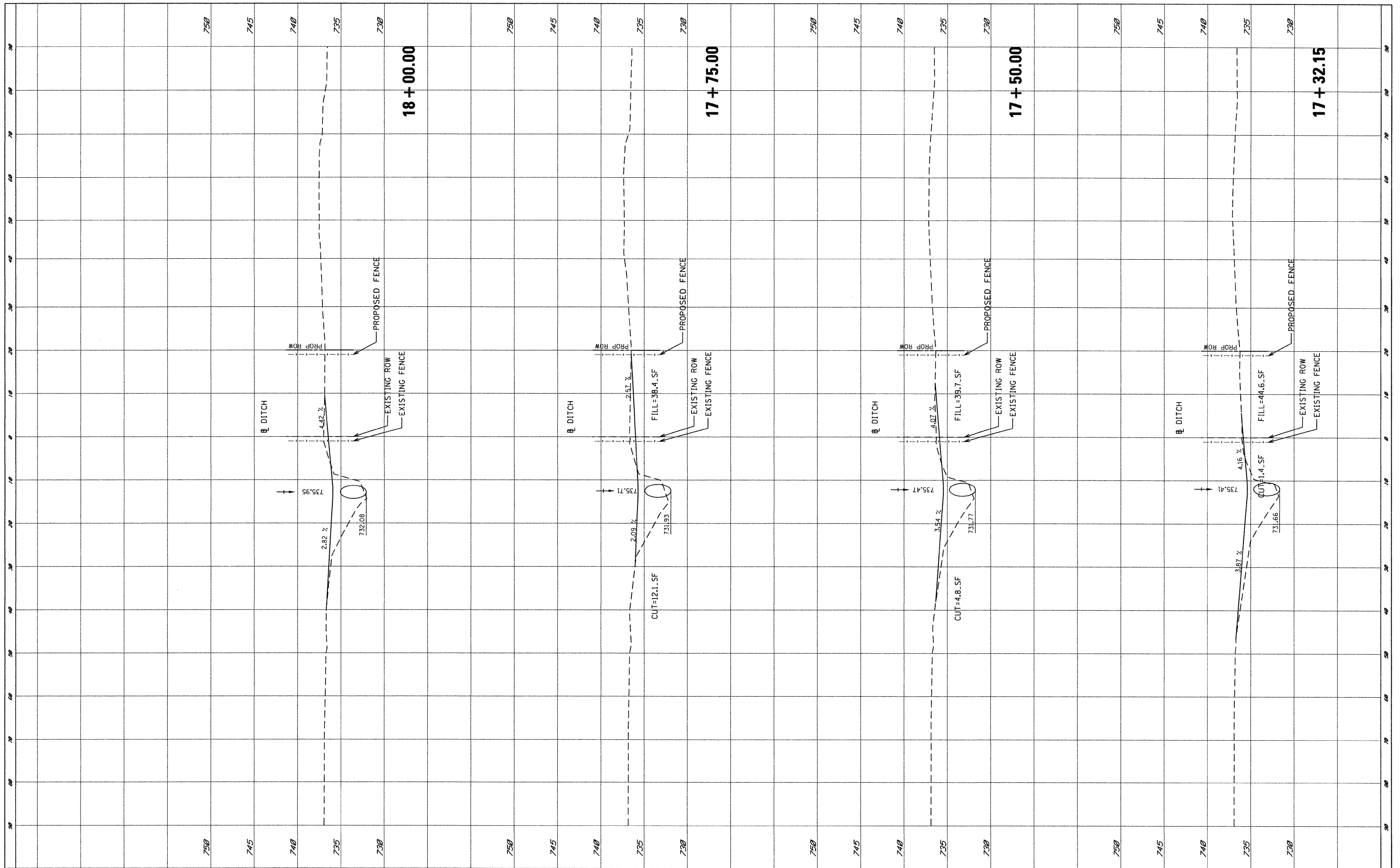
CROSS-SECTION-DITCH

SCALE: SHEET NO. OF SHEETS STA. 16+50.00 TO STA. 17+25.00

F.A.P. RTE. NO.	SECTION	COUNTY	TOTAL SHEETS	SHEET NO.
347	4R-T	KANE	20	14
CONTRACT NO. 60K16				
FED. ROAD DIST. NO. ILLINOIS FED. AID PROJECT				

FINAL SURVEY	SURVEYED	BY	DATE
NOTE BOOK	PLOTTED		
AREAS CHECKED	TEMPLATE		
NO.	AREAS CHECKED		

ORIGINAL SURVEY	SURVEYED	BY	DATE
NOTE BOOK	PLOTTED		
AREAS CHECKED	TEMPLATE		
NO.	AREAS CHECKED		



FILE NAME = P:\2009\ME09006_VerVar_Phil\CADD\W013_IL38\Shd\DI60K16-PX5-Pipe.dgn

USER NAME = Thomas
 DESIGNED -
 DRAWN -
 PLOT SCALE = 10.0000' / IN.
 PLOT DATE = 5/14/2010

CHECKED -
 DATE -

REVISED -
 REVISED -
 REVISED -
 REVISED -

**STATE OF ILLINOIS
 DEPARTMENT OF TRANSPORTATION**

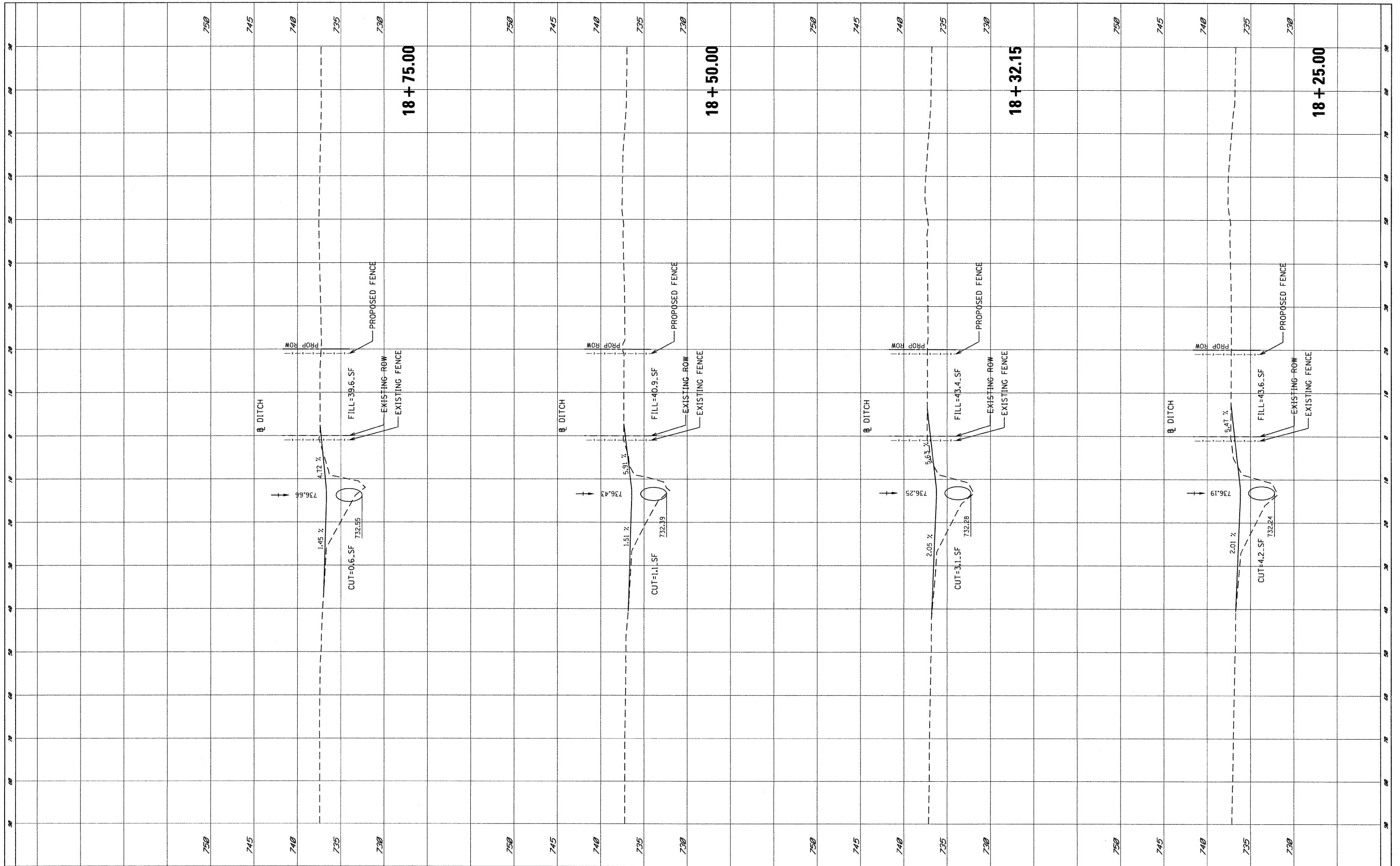
CROSS-SECTION-DITCH

SCALE: SHEET NO. OF SHEETS STA. 17+32.15 TO STA. 18+00.00

F.A.P. RTE.	SECTION	COUNTY	TOTAL SHEETS	SHEET NO.
347	4R-T	KANE	20	15
CONTRACT NO. 60K16				
FED. ROAD DIST. NO. ILLINOIS FED. AID PROJECT				

FINAL SURVEY	SURVEYED	BY	DATE
NOTE BOOK	PLOTTED		
AREAS CHECKED	TEMPLATE		
NO.	AREAS CHECKED		

ORIGINAL SURVEY	SURVEYED	BY	DATE
NOTE BOOK	PLOTTED		
AREAS CHECKED	TEMPLATE		
NO.	AREAS CHECKED		



FILE NAME = P:\2009\ME09006_VerVar-Phi\CADD\W013_IL38\Sh...
 USER NAME = Thomas
 DESIGNED -
 DRAWN -
 CHECKED -
 DATE -

DESIGNED -
 DRAWN -
 CHECKED -
 DATE -

DESIGNED -
 DRAWN -
 CHECKED -
 DATE -

DESIGNED -
 DRAWN -
 CHECKED -
 DATE -

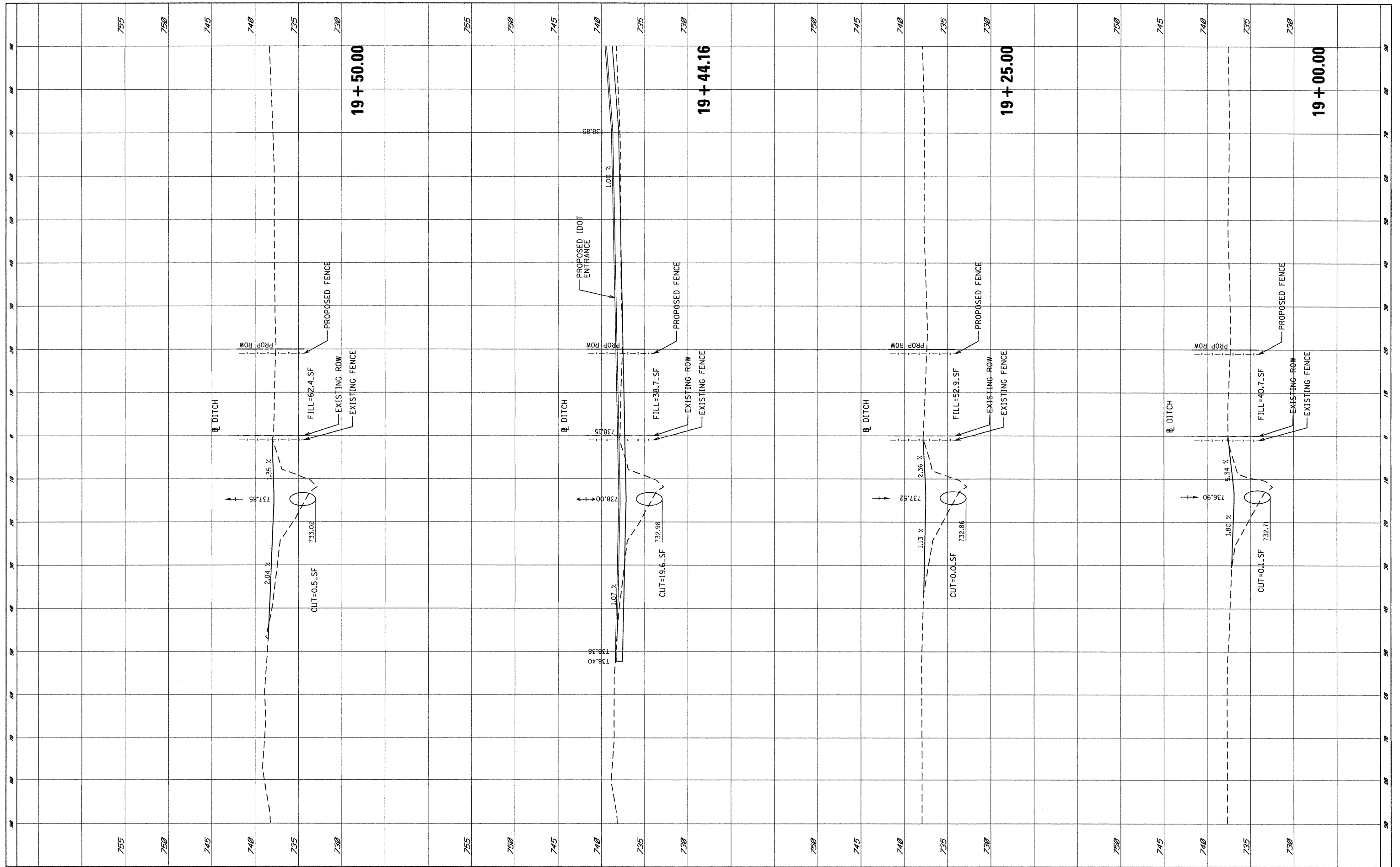
STATE OF ILLINOIS
DEPARTMENT OF TRANSPORTATION

CROSS-SECTION-DITCH
 SCALE: SHEET NO. OF SHEETS STA. 18+25.00 TO STA. 18+75.00

F.A.P. RTE.	SECTION	COUNTY	TOTAL SHEETS	SHEET NO.
347	4R-T	KANE	20	16
CONTRACT NO. 60K16				
ILLINOIS FED. AID PROJECT				

FINAL SURVEY	SURVEYED	BY	DATE
NOTE BOOK	PLOTTED		
AREAS CHECKED	TEMPLATE		
NO.	AREAS CHECKED		

ORIGINAL SURVEY	SURVEYED	BY	DATE
NOTE BOOK	PLOTTED		
AREAS CHECKED	TEMPLATE		
NO.	AREAS CHECKED		



FILE NAME = P:\2009\ME09006_Var\Ph\1\CADD\W013_IL30\Shp\DI60K16-PX5-Pipe.dgn

USER NAME = Thomas
 DESIGNED -
 DRAWN -
 CHECKED -
 DATE -

REVISIED -
 REVISIED -
 REVISIED -
 REVISIED -

PLOT SCALE = 10.0000' / IN.
 PLOT DATE = 5/14/2010

**STATE OF ILLINOIS
 DEPARTMENT OF TRANSPORTATION**

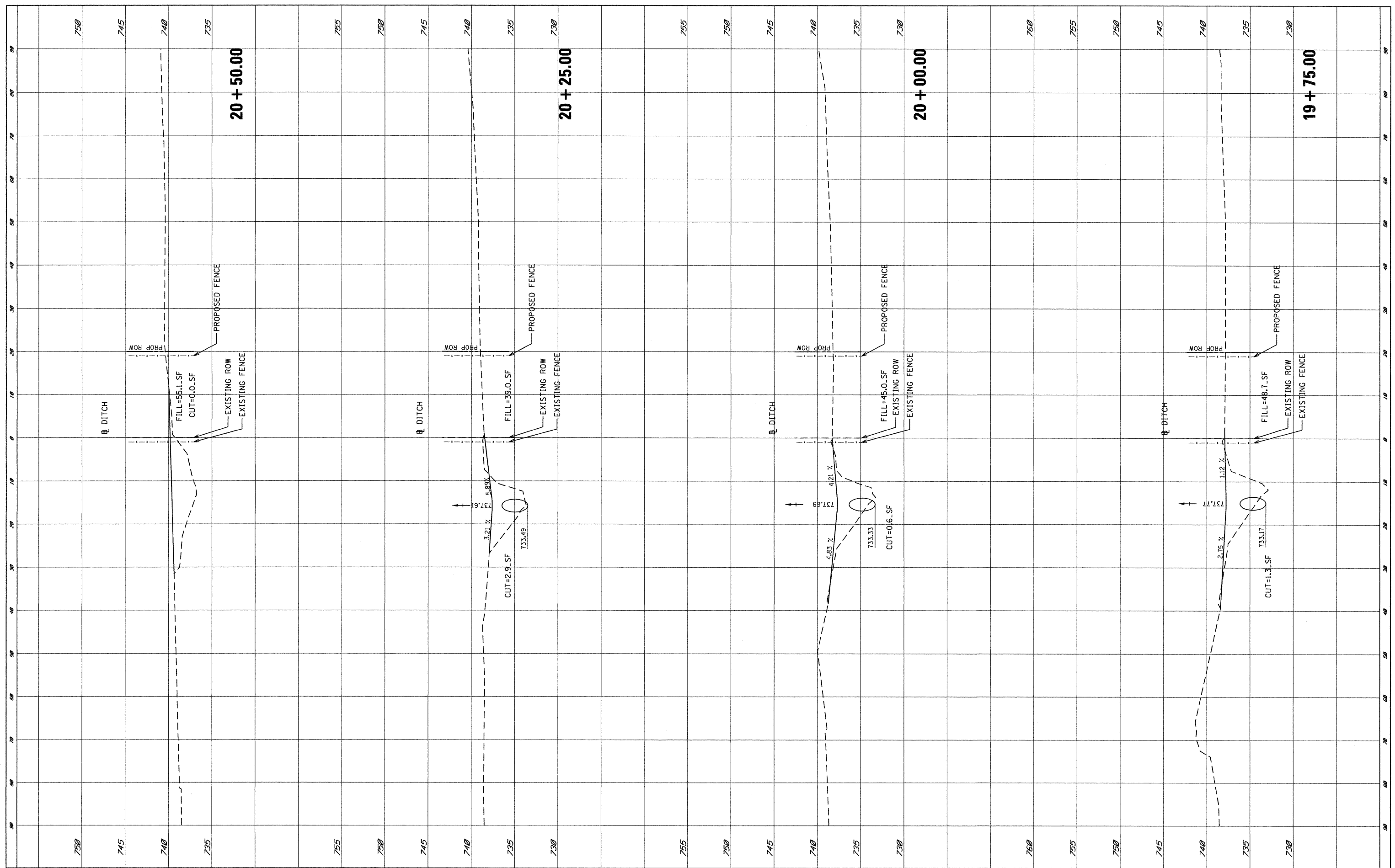
CROSS-SECTION-DITCH

SCALE: SHEET NO. OF SHEETS STA. 19+00.00 TO STA. 19+50.00

F.A.P. RTE. 347	SECTION 4R-T	COUNTY KANE	TOTAL SHEETS 20	SHEET NO. 17
FED. ROAD DIST. NO. ILLINOIS FED. AID PROJECT			CONTRACT NO. 60K16	

FINAL SURVEY SURVEYED BY DATE
 PLOTTED TEMPLATE
 NOTE BOOK AREAS CHECKED
 NO.

ORIGINAL SURVEY SURVEYED BY DATE
 PLOTTED TEMPLATE
 NOTE BOOK AREAS CHECKED
 NO.



FILE NAME = P:\2009\ME09006_Var\Phi\IN\CADD\W013_IL38\Shp\DI160K16-PXS-Pipe.dgn

USER NAME = Thomas
 PLOT SCALE = 10.0000' / IN.
 PLOT DATE = 5/14/2010

DESIGNED -
 DRAWN -
 CHECKED -
 DATE -

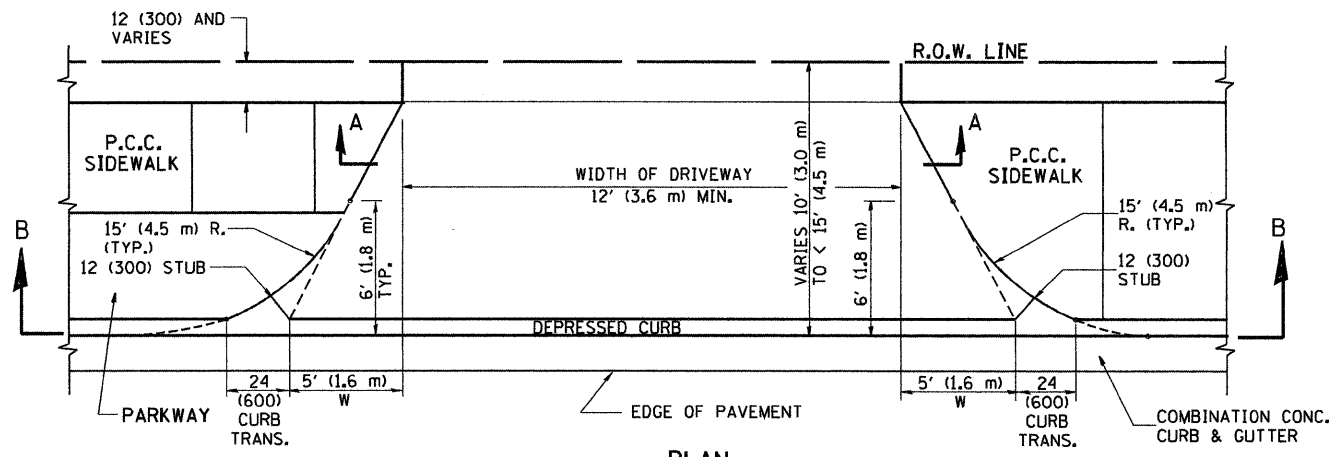
REVISED -
 REVISED -
 REVISED -
 REVISED -

**STATE OF ILLINOIS
 DEPARTMENT OF TRANSPORTATION**

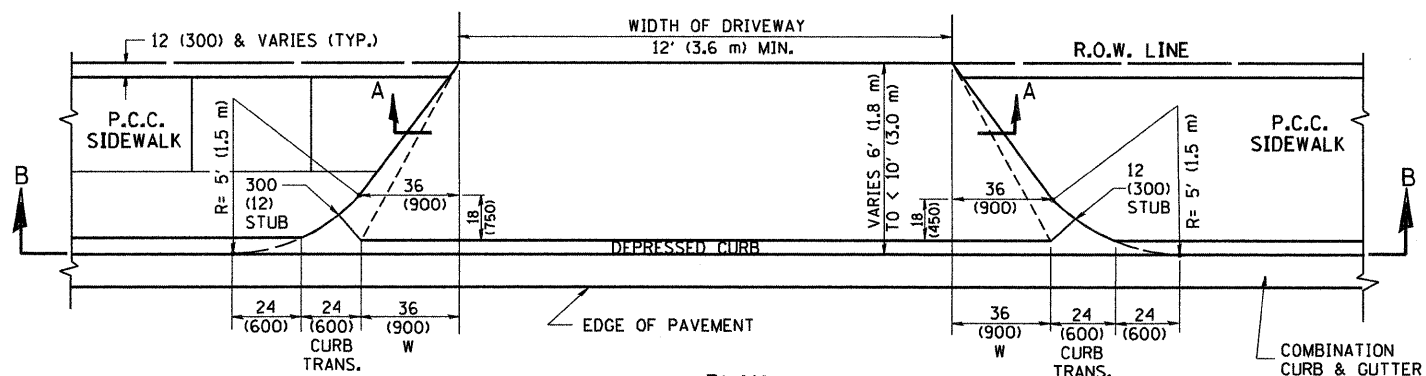
CROSS-SECTION-DITCH

SCALE: SHEET NO. OF SHEETS STA. 19+75.00 TO STA. 20+50.00

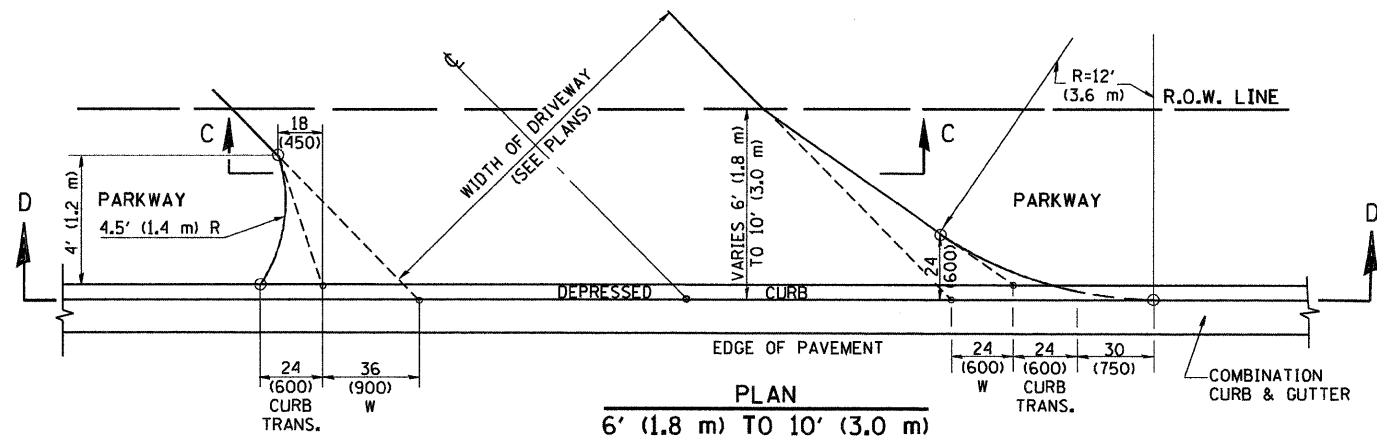
F.A.P. RTE. 347	SECTION 4R-T	COUNTY KANE	TOTAL SHEETS 20	SHEET NO. 18
CONTRACT NO. 60K16			ILLINOIS FED. AID PROJECT	



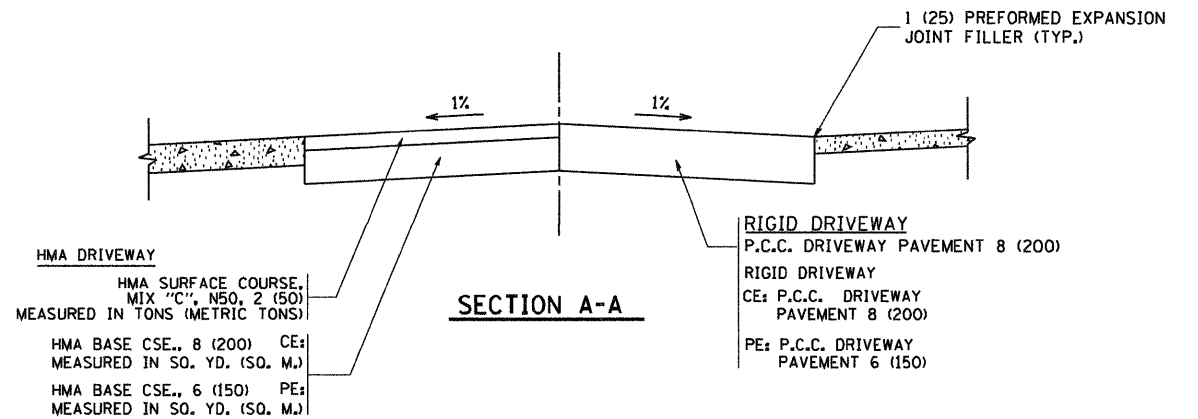
PLAN
10' (3.0 m) TO < 15' (4.5 m)



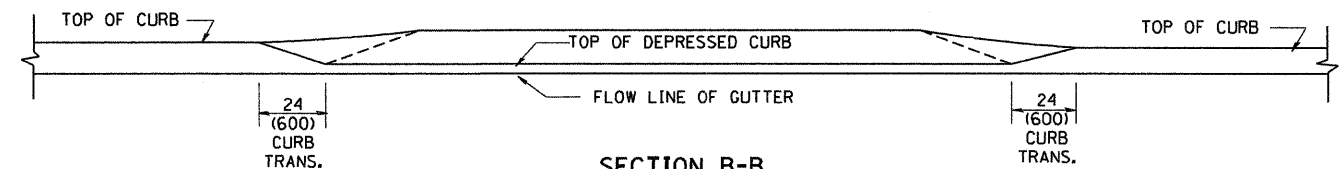
PLAN
6' (1.8 m) TO < 10' (3.0 m)



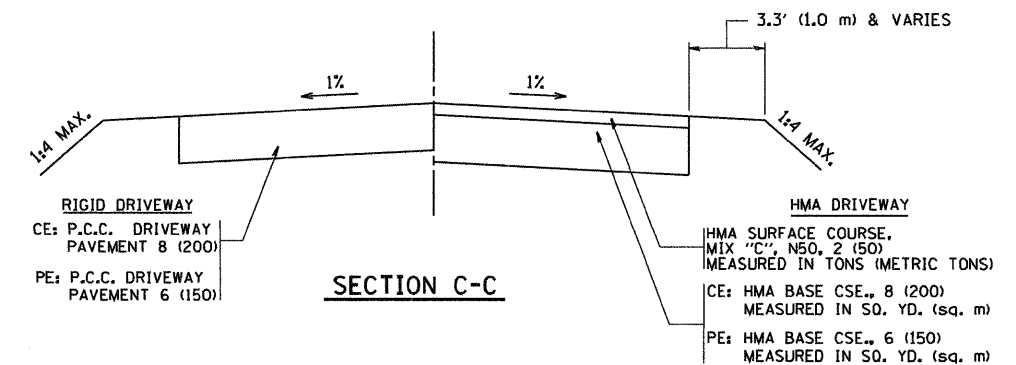
PLAN
6' (1.8 m) TO 10' (3.0 m)



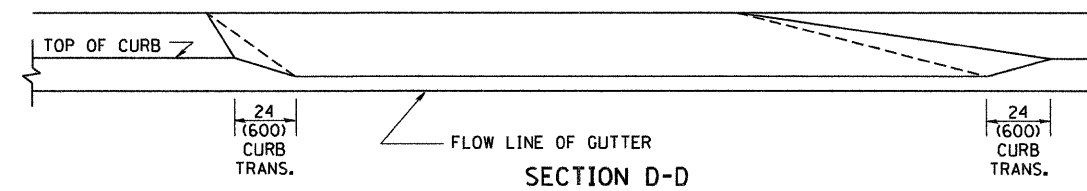
SECTION A-A



SECTION B-B



SECTION C-C



SECTION D-D

GENERAL NOTES

DRIVEWAY SLOPES, LOCATIONS, & GEOMETRIC LAYOUT SHALL BE IN ACCORDANCE WITH THE LATEST EDITION OF THE "HANDBOOK FOR POLICY ON PERMITS FOR ACCESS DRIVEWAYS TO STATE HIGHWAYS". FOR FURTHER LAYOUT REQUIREMENTS, REFER TO ILLUSTRATION 10 IN THE PERMIT HANDBOOK. WHERE SIDEWALKS EXIST, DRIVEWAYS SHALL BE REPLACED WITH RIGID PAVEMENT. WHERE NO SIDEWALKS EXIST, DRIVEWAYS SHALL BE REPLACED IN KIND. SIDEWALK CROSS SLOPE THRU DRIVEWAY AREA TO BE A MAXIMUM OF 1:50.

WHEN THE DISTANCE BETWEEN R.O.W. AND THE BACK OF CURB IS EQUAL TO OR LESS THAN 8' (2.4 m), THE P.C.C. SIDEWALK SHALL EXTEND TO THE BACK OF CURB.

THE RESIDENT ENGINEER SHALL CONTACT THE TRAFFIC PERMIT OFFICE AT 847/705-4131 FOR ANY QUESTIONS ON DRIVEWAYS SHOWN IN THE PLANS, SPECIFICALLY IN REFERENCE TO ADDITIONAL AND/OR RELOCATION/REMOVAL OF A DRIVEWAY.

COMBINATION CONCRETE CURB & GUTTER SHALL BE MEASURED STRAIGHT ACROSS THE DRIVEWAY. NO ADDITIONAL COMPENSATION WILL BE ALLOWED FOR THE CURB & GUTTER TRANSITION.

THE 1 (25) PREFORMED EXPANSION JOINT FILLER WILL NOT BE PAID SEPARATELY, BUT SHALL BE CONSIDERED INCLUDED IN THE COST OF THE P.C.C. DRIVEWAY PAVEMENT OR P.C.C. SIDEWALK.

"W" VARIES FROM 36 (900) TO 5' (1.5 m) PROPORTIONAL TO THE LENGTH (L), FROM 6' (1.8 m) TO 10' (3 m).

ALL DIMENSIONS ARE IN INCHES (MILLIMETERS) UNLESS OTHERWISE NOTED.

FILE NAME =
W:\dststd\22x34\bd82.dgn

USER NAME = geglianobt
PLOT SCALE = 50.0000' / IN.
PLOT DATE = 1/4/2008

DESIGNED - R. SHAH
DRAWN -
CHECKED -
DATE - 11-06-95

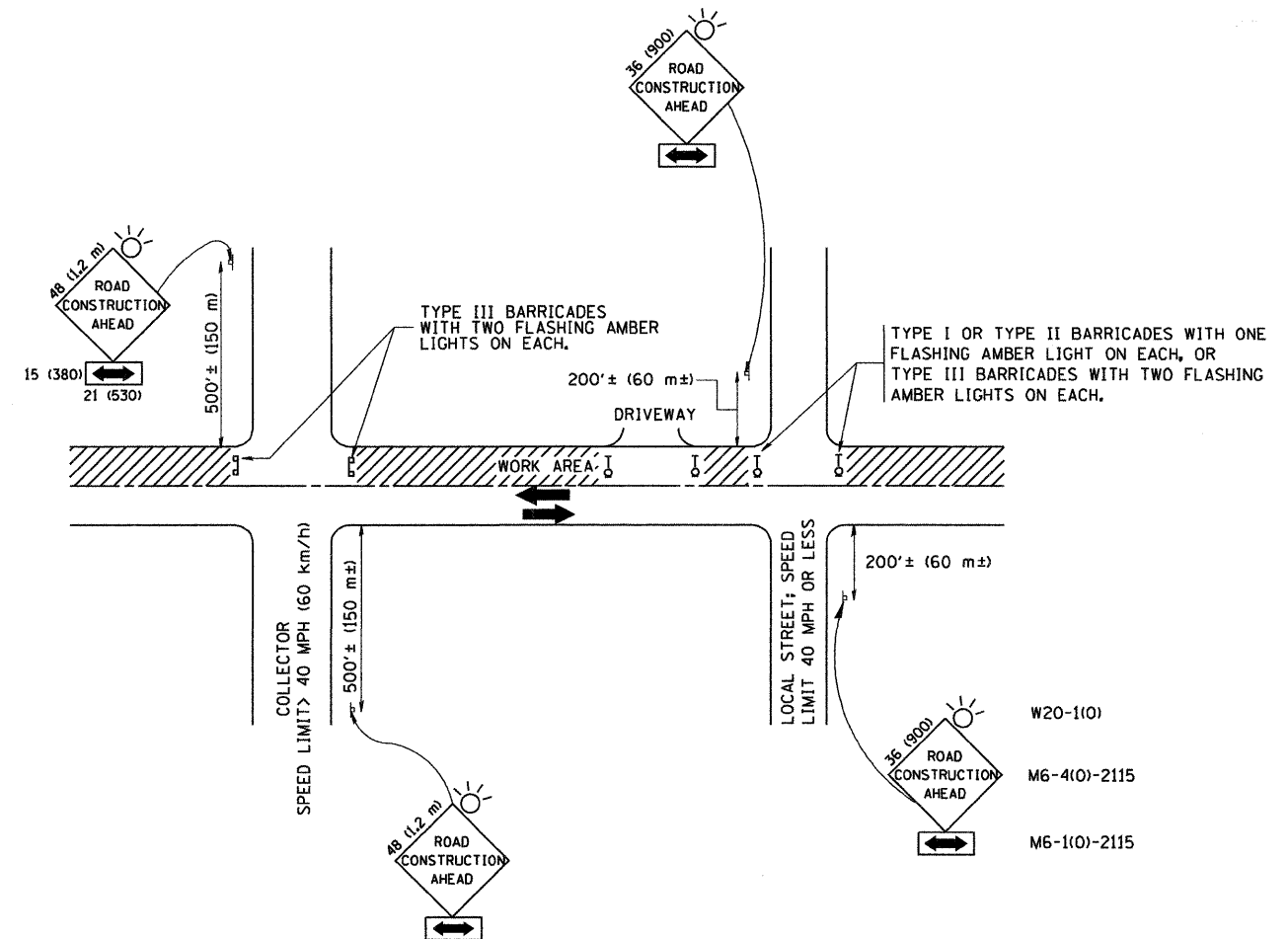
REVISED - T. HOLTZ 04-08-97
REVISED - M. GOMEZ 04-06-01
REVISED - P. LaFLEUR 04-15-03
REVISED - R. BORO 01-01-07

STATE OF ILLINOIS
DEPARTMENT OF TRANSPORTATION

DRIVEWAY DETAILS
DISTANCE BETWEEN ROW AND FACE OF CURB < 15' (4.5 m)

SCALE: NONE SHEET NO. 1 OF 1 SHEETS STA. TO STA.

F.A.P. RTE.	SECTION	COUNTY	TOTAL SHEETS	SHEET NO.
347	4 R-T	KANE	20	19
BD400-02 (BD-02)			CONTRACT NO.	
FED. ROAD DIST. NO. 1 ILLINOIS FED. AID PROJECT				



TRAFFIC CONTROL AND PROTECTION FOR SIDE ROADS, INTERSECTIONS, AND DRIVEWAYS

NOTES:

- A. FOR NO LANE RESTRICTION ON THE SIDE ROAD OR DRIVEWAYS
 1. SIDE ROAD WITH A SPEED LIMIT OF 40 MPH (60 km/h) OR LESS AS SHOWN ON THE DRAWING AND AS DIRECTED BY THE ENGINEER:
 - a) ONE ROAD CONSTRUCTION AHEAD SIGN 36 x 36 (900x900) WITH A FLASHER AND FLAG MOUNTED ON IT APPROXIMATELY 200' (60 m) IN ADVANCE OF THE MAIN ROUTE.
 - b) THE CLOSED PORTION OF THE MAIN ROUTE SHALL BE PROTECTED BY BLOCKING WITH TYPE I, TYPE II OR TYPE III BARRICADES, 1/3 OF THE CROSS SECTION OF THE CLOSED PORTION.
 2. SIDE ROAD WITH A SPEED LIMIT GREATER THAN 40 MPH (60 km/h) AS SHOWN ON THE DRAWING AND AS DIRECTED BY THE ENGINEER:
 - a) ONE ROAD CONSTRUCTION AHEAD SIGN 48 x 48 (1.2 m x 1.2 m) WITH A FLASHER MOUNTED ON IT APPROXIMATELY 500' (150 m) IN ADVANCE OF THE MAIN ROUTE.
 - b) THE CLOSED PORTION OF THE MAIN ROUTE SHALL BE PROTECTED BY BLOCKING WITH TYPE III BARRICADES, 1/2 OF THE CROSS SECTION OF THE CLOSED PORTION.
 3. WHEN THE SIDE ROAD LIES BETWEEN THE BEGINNING OF THE MAINLINE SIGNING AND THE WORK ZONE, A SINGLE HEADED ARROW (M6-1) SHALL BE USED IN LIEU OF THE DOUBLE HEADED ARROW (M6-4).
- B. FOR A LANE CLOSURE ON A SIDE ROAD OR DRIVEWAY:

USE APPLICABLE PORTIONS OF THE TYPICAL APPLICATION OF TRAFFIC CONTROL DEVICES (STD. 701501, STD. 701606 OR THE APPROPRIATE STANDARD). THE SPACING OF SIGNS AND BARRICADES SHALL BE ADJUSTED FOR FIELD CONDITIONS AS DIRECTED BY THE ENGINEER. THE DIRECTIONAL ARROW SHALL BE COVERED OR REMOVED WHEN NO LONGER CONSISTENT WITH THE SIDE ROAD LANE CLOSURE.
- C. ADVANCE WARNING SIGNS ARE TO BE OMITTED ON DRIVEWAY UNLESS OTHERWISE NOTED.
- D. THE TRAFFIC CONTROL AND PROTECTION FOR SIDE ROADS, INTERSECTIONS, AND DRIVEWAYS SHALL BE INCIDENTAL TO THE COST OF SPECIFIED TRAFFIC CONTROL STANDARDS OR ITEMS.

All dimensions are in millimeters (inches) unless otherwise shown.

FILE NAME = W:\distatd\22x34\to10.dgn	USER NAME = gaglianobt	DESIGNED - LHA	REVISED - J. OBERLE 10-18-95	STATE OF ILLINOIS DEPARTMENT OF TRANSPORTATION	TRAFFIC CONTROL AND PROTECTION FOR SIDE ROADS, INTERSECTIONS, AND DRIVEWAYS			F.A.R. RTE. 347	SECTION 4 R-T	COUNTY KANE	TOTAL SHEETS 20	SHEET NO. 20
	PLOT SCALE = 50,000 / IN.	DRAWN -	REVISED - A. HOUSEH 03-06-96		SCALE: NONE	SHEET NO. 1 OF 1 SHEETS	STA.	TO STA.	TC-10 CONTRACT NO. 60K16			
	PLOT DATE = 1/4/2008	CHECKED -	REVISED - A. HOUSEH 10-15-96									
		DATE - 06-89	REVISED - T. RAMMACHER 01-06-00									