

F.A.I. RTE.	SECTION	COUNTY	TOTAL SHEETS	SHEET NO.
94	1314B-1-F	COOK	19	1
		ILLINOIS	CONTRACT NO. 60K91	

STATE OF ILLINOIS
DEPARTMENT OF TRANSPORTATION
DIVISION OF HIGHWAYS

**PROPOSED
HIGHWAY PLANS**

FAI-94 (BISHOP FORD EXPRESSWAY)
AT COTTAGE GROVE AVENUE
SECTION 1314B-1-F
PROJECT: *IM-094-3(418)064*
BEAM AND BEARING FABRICATION
COOK COUNTY

C-91-618-10

FOR INDEX OF SHEETS, SEE SHEET NO. 2

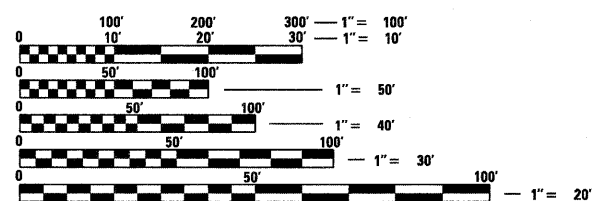
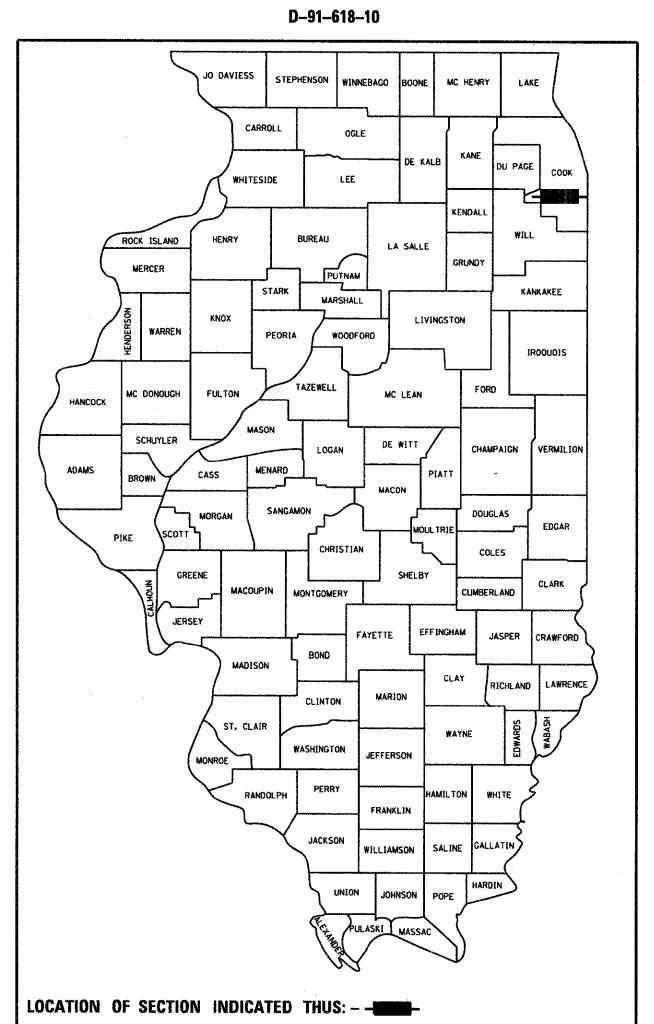
TRAFFIC DATA

F.A.U. 2917
COTTAGE GROVE AVENUE
EXISTING ADT: 11,900 (2006)
DESIGN ADT: 15,390 (2021)
SPEED LIMIT: 35 MPH

DESIGN DESIGNATION

COTTAGE GROVE AVENUE
1827(31) Minor Arterial (Urban) 2.58 (PCC-20)

PROJECT LOCATED IN THE CITY OF CHICAGO
IN COOK COUNTY

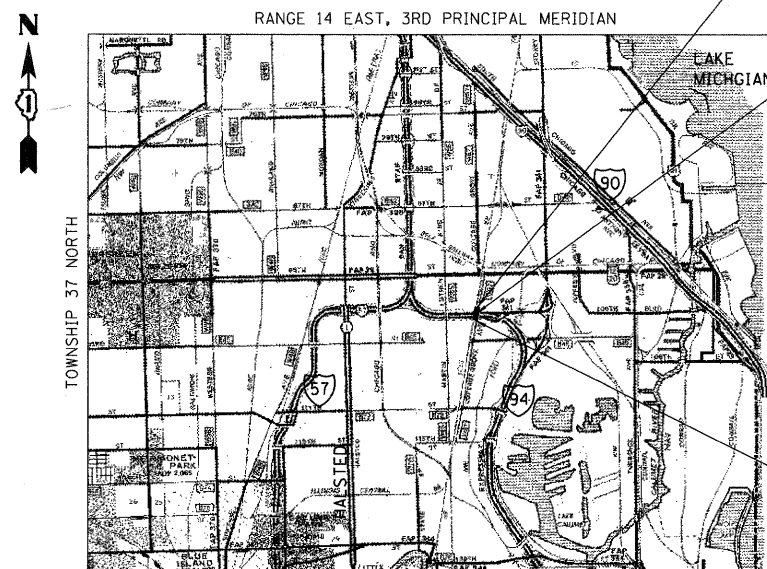


FULL SIZE PLANS HAVE BEEN PREPARED USING STANDARD ENGINEERING SCALES. REDUCED SIZED PLANS WILL NOT CONFORM TO STANDARD SCALES. IN MAKING MEASUREMENTS ON REDUCED PLANS, THE ABOVE SCALES MAY BE USED.

FOR UTILITY INFORMATION CONTACT
C.U.A.N.
CHICAGO UTILITY ALERT NETWORK
312-744-7000

PROJECT MANAGER: HELEN PAZON (847)705-4523

CONTRACT NO. 60K91



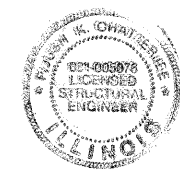
CITY OF CHICAGO
SCALE: 1" = 5000'

GROSS LENGTH = 239 FT. = 0.045 MILE
NET LENGTH = 239 FT. = 0.045 MILE

PROJECT BEGINS
STA. 100+32.00

STA. 101+93.89
EXISTING S.N. 016-2119
REMOVE EXISTING 171.8'
THREE SPAN STRUCTURE

PROJECT ENDS
STA. 103+24.59



Expires: 11-30-2010

Pijush K. Chatterjee

STATE OF ILLINOIS
DEPARTMENT OF TRANSPORTATION
DIVISION OF HIGHWAYS

SUBMITTED MAY 5, 2010

Diana M. O'Keefe DEPUTY DIRECTOR OF HIGHWAYS, REGION ENGINEER

June 25 2010

Scott E. Stitt, P.E. acting ENGINEER OF DESIGN AND ENVIRONMENT

June 25 2010

Christine M. Reed DIRECTOR OF HIGHWAYS, CHIEF ENGINEER

**PRINTED BY THE AUTHORITY
OF THE STATE OF ILLINOIS**

600 W FULTON ST
CHICAGO, ILLINOIS
60681 1259

TEL 312 454 9100
FAX 312 559 1217
WEB www.epstein-ill.com

PROJECT MANAGER: HELEN PAZON (847)705-4523