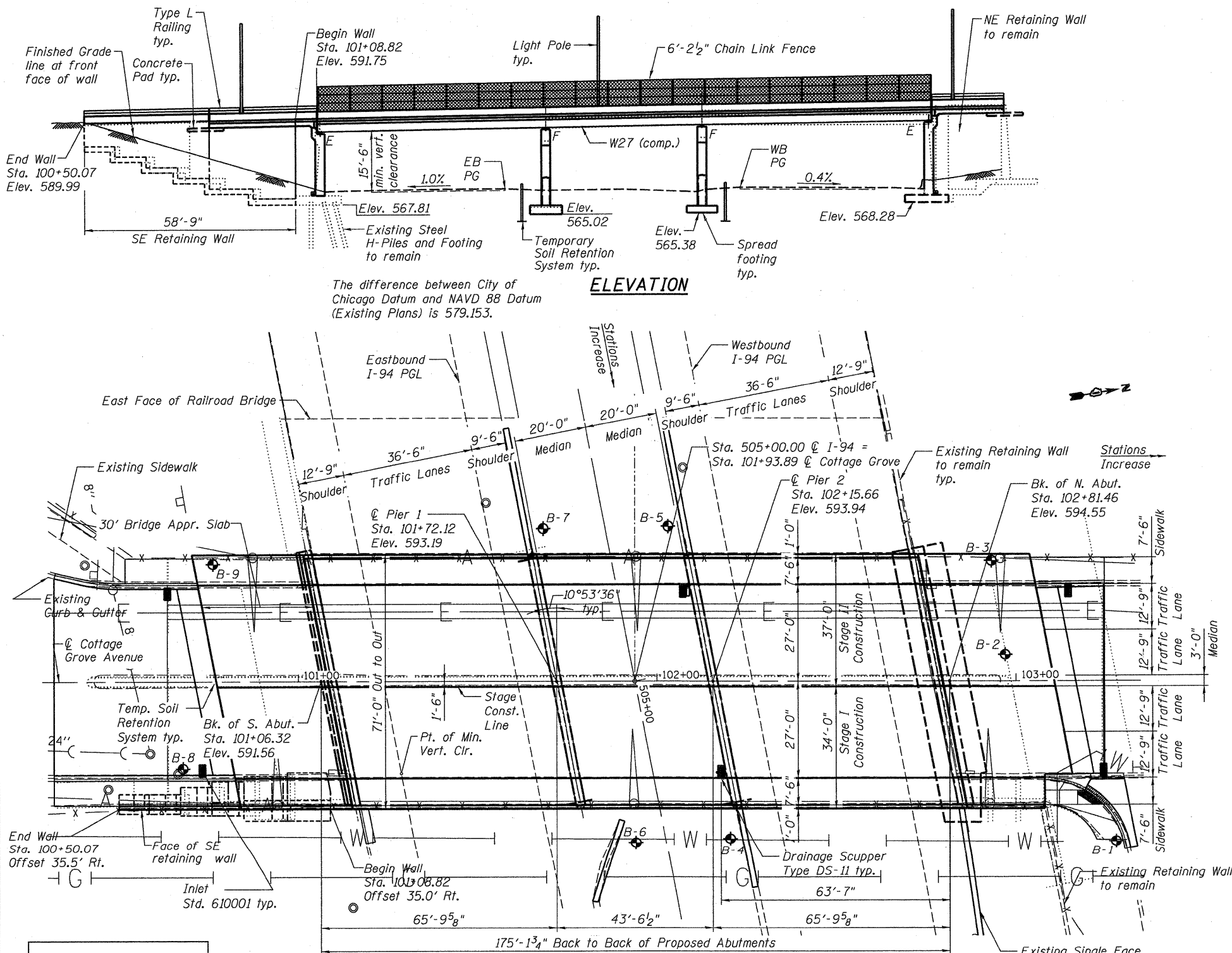


BM-#10: Chiseled square located on the southeast corner of southwest leg of concrete overhead sign footing at 17.68 ft Left from C/L I-94 Sta. 507+10.85, Elev. 578.44.

STATE OF ILLINOIS
DEPARTMENT OF TRANSPORTATION

Existing Structure: S.N. 016-2119 Built in 1960 as part of FAI-94 Section 066-1314-CF at Sta. 101+93.89. Existing structure consists of a three simple span 36"x33" PPC deck beams with a bituminous overlay supported on two closed abutments and two solid stem piers. Except for South Abutment that is supported on steel HP piles, the substructure units are founded on spread footing. Sidewalks, metal handrails, chain link fences and lighting are provided on each side of the bridge. Structure is 171'-10" long Back to Back of abutments and Out-to-Out deck width is 71'-0".
Structure to be removed and replaced except the existing piles supported South Abutment will be retained to support the proposed South Abutment. Existing SE Retaining Wall to be removed and replaced. Traffic to be maintained utilizing stage construction.



The difference between City of Chicago Datum and NAVD 88 Datum (Existing Plans) is 579.153.

ELEVATION

PLAN

LOADING HL-93
Allow 50#/sq. ft. for future wearing surface.

DESIGN SPECIFICATIONS
2007 AASHTO LRFD Bridge Design Specifications with 2008 and 2009 Interims

DESIGN STRESSES
FIELD UNITS

$f'_c = 3,500$ psi
 $f_y = 60,000$ psi (Reinforcement)
 $f_y = 50,000$ psi (M270 Grade 50)
 $f_y = 36,000$ psi (M270 Grade 36)

SEISMIC DATA

Seismic Performance Zone (SPZ) = 1
Design Spectral Acceleration at 1.0 sec. (SD1) = 0.063g
Design Spectral Acceleration at 0.2 sec. (SDS) = 0.112g
Soil Site Class = C

STATION 505+00.00
BUILT 201_ BY
STATE OF ILLINOIS
F.A.I. 94
SEC. 1314B-1
LOADING HL-93
STR. NO. 016-2119

NAME PLATE

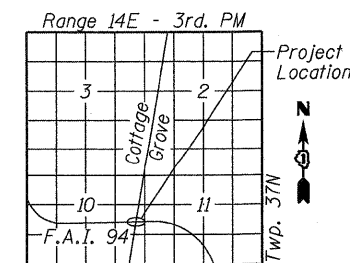
APPROVED
FOR STRUCTURAL ADEQUACY ONLY

Ralph E. Anderson (TIT)
ENGINEER OF BRIDGES AND STRUCTURES



Pijush K. Chatterjee
Expires 11-30-2010

GENERAL PLAN AND ELEVATION
FAI 94 AT COTTAGE GROVE AVENUE
FAI 94 SECTION 1314B-1-F
COOK COUNTY
STATION 505+00.00
STRUCTURE NO. 016-2119



LOCATION SKETCH

DESIGNED	EV
CHECKED	PC
DRAWN	JCP
CHECKED	JPO

 600 W FULTON ST CHICAGO, ILLINOIS 60611 1259 TEL 312 454 9100 FAX 312 559 1217 WEB www.sepstein-il.com	SHEET NO. 1	F.A.I. RTE. 94	SECTION 1314B-1-F	COUNTY COOK	TOTAL SHEETS 19	SHEET NO. 3
	S17 SHEETS	CONTRACT NO. 60K91				
ILLINOIS FED. AID PROJECT						