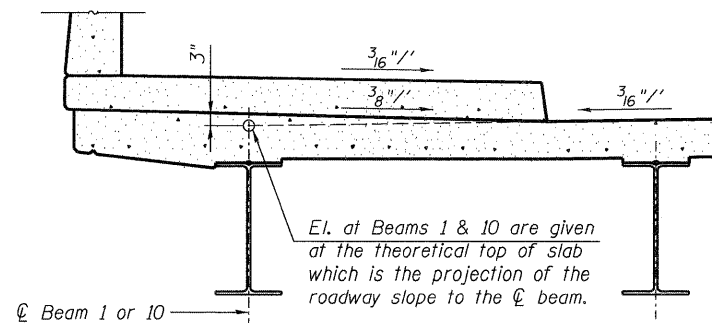
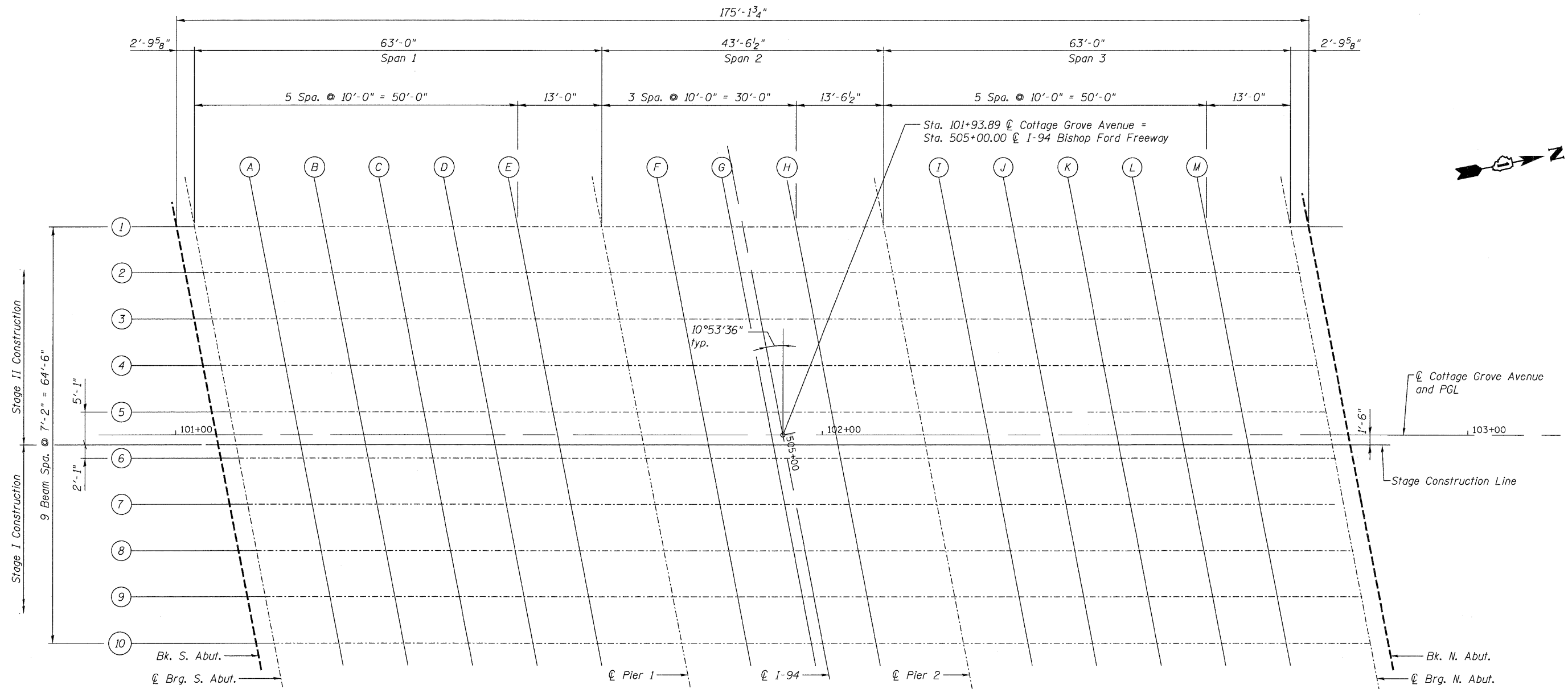


STATE OF ILLINOIS  
DEPARTMENT OF TRANSPORTATION



PROJECTION UNDER SIDEWALK DETAIL

FOR INFORMATION ONLY

TOP OF SLAB ELEVATIONS I  
STRUCTURE NO. 016-2119

DESIGNED	EV
CHECKED	PC
DRAWN	JCP
CHECKED	JPO

 600 W FULTON ST CHICAGO, ILLINOIS 60661 1259 TEL 312 454 9100 FAX 312 559 1217 WEB www.epstein-isi.com	SHEET NO. 3  S17 SHEETS	F.A.I. RTE.	SECTION	COUNTY	TOTAL SHEETS	SHEET NO.
		94	1314B-1-F	COOK	19	5
CONTRACT NO. 60K91						
ILLINOIS FED. AID PROJECT						