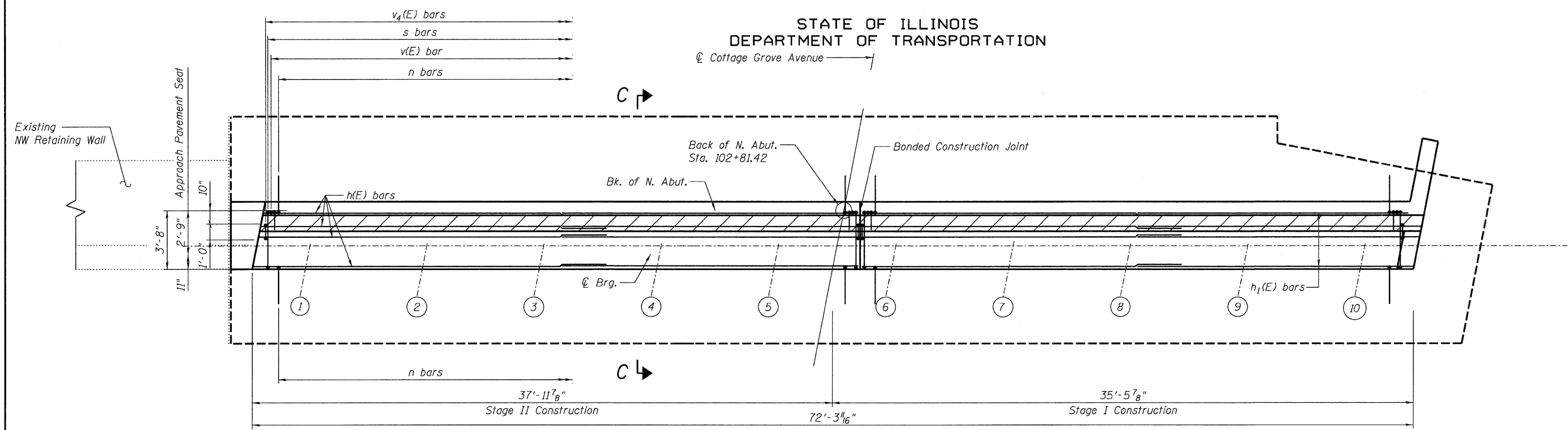
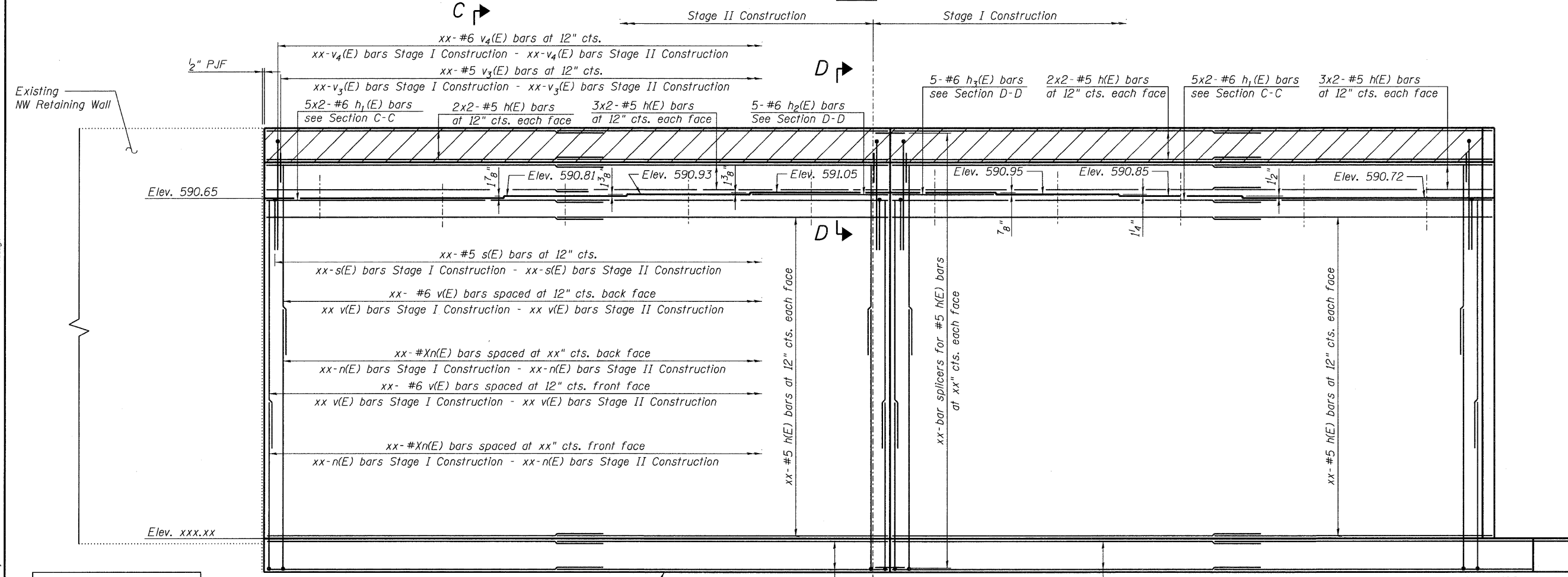


STATE OF ILLINOIS
DEPARTMENT OF TRANSPORTATION

☉ Cottage Grove Avenue



PLAN



ELEVATION

(Looking North at North Abutment)

FOR INFORMATION ONLY

NORTH ABUTMENT
STRUCTURE NO. 016-2119

DESIGNED	EV
CHECKED	PC
DRAWN	JCP
CHECKED	JPO

	SHEET NO. 15 S17 SHEETS	F.A.I. RTE.	SECTION	COUNTY	TOTAL SHEETS	SHEET NO.
		94	1314B-1-F	COOK	19	17
800 W FULTON ST CHICAGO, ILLINOIS 60661 1259		TEL 312 454 9100 FAX 312 559 1217 WEB www.epstein-il.com		CONTRACT NO. 60K91		
ILLINOIS FED. AID PROJECT						

8/15/2010 4:52:22 PM P:\Projects\2000\09225 - IDOT PTB 152\CAD\CADD Sheets\Beam Fabrication\016\249-017-NorthAbut.dgn