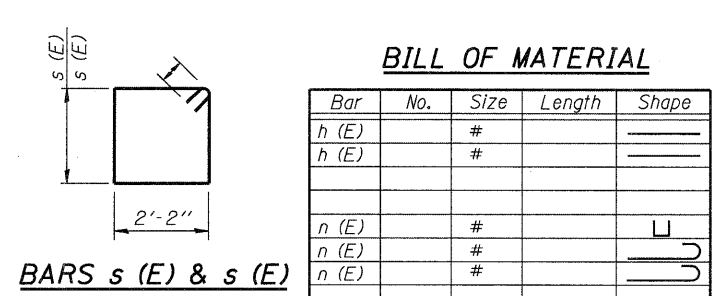
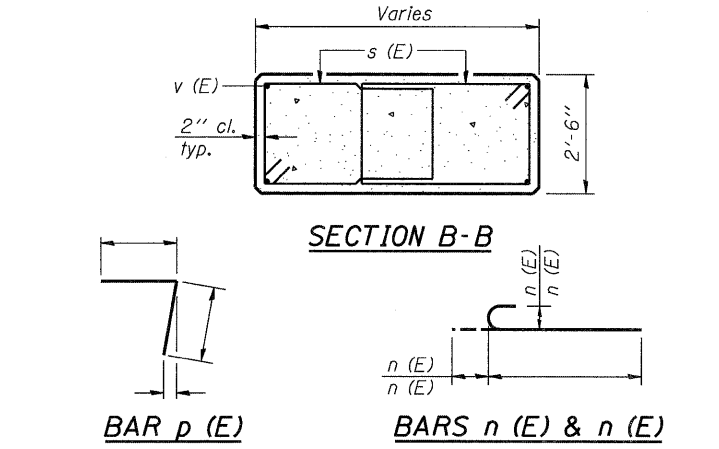
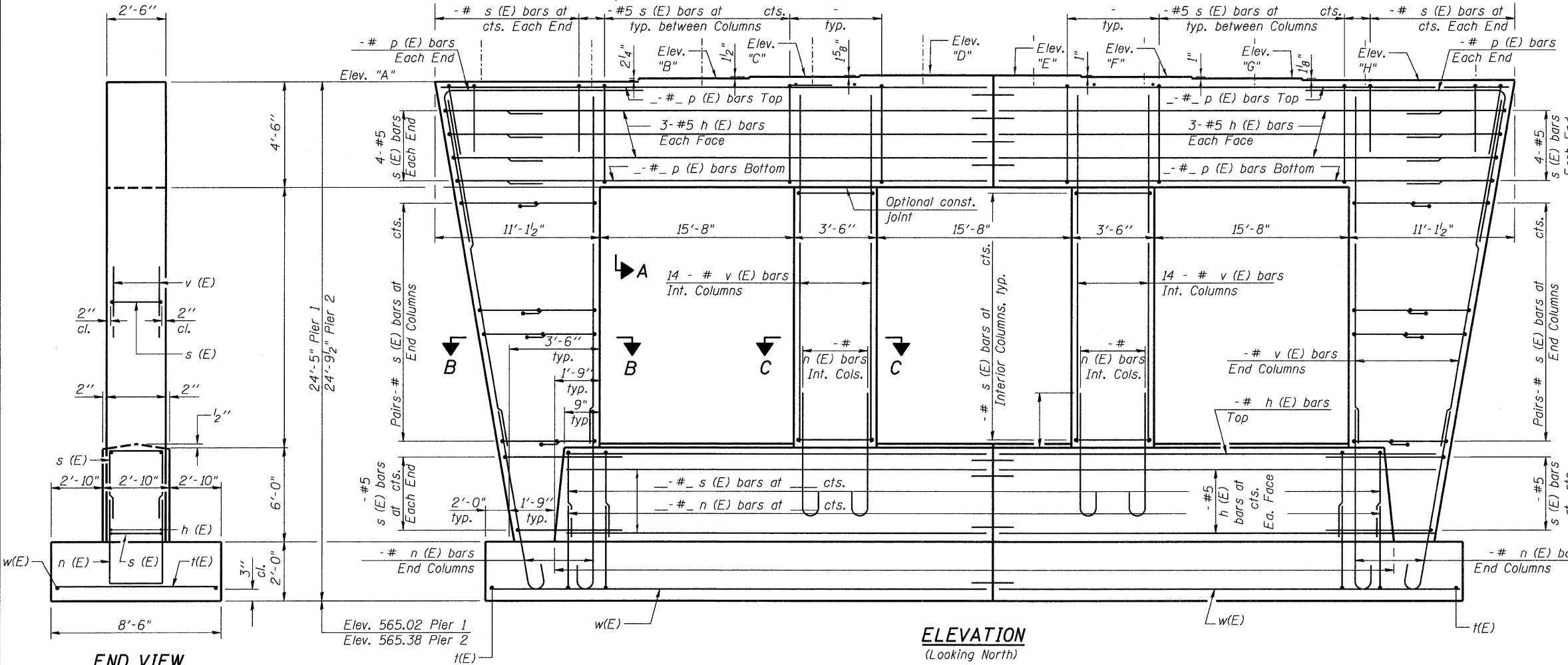
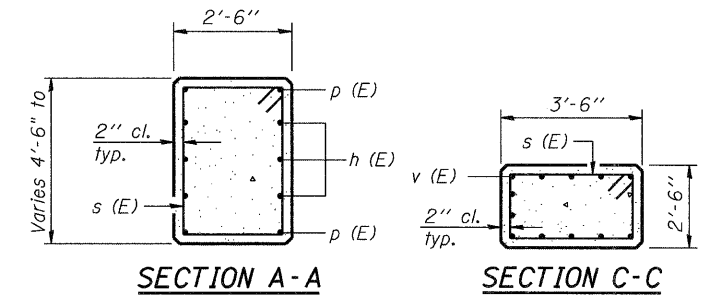
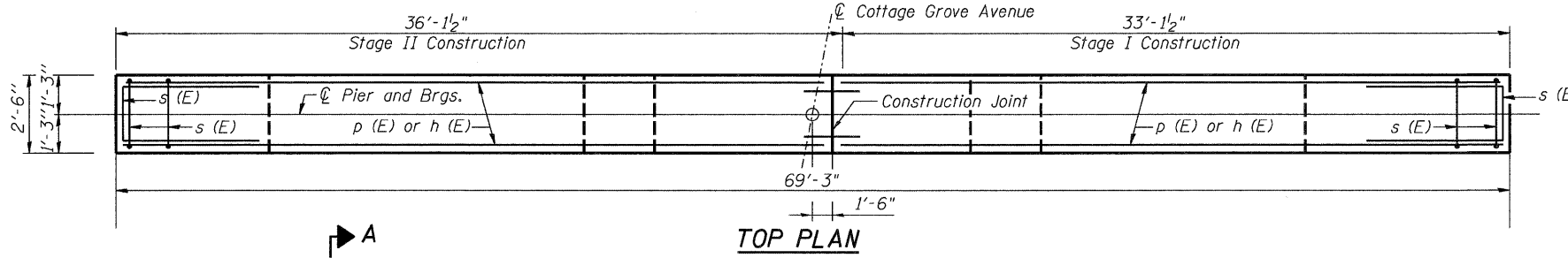


STATE OF ILLINOIS
DEPARTMENT OF TRANSPORTATION

Notes:
Space reinforcement in cap to miss anchor bolts.
Four steps monolithically with cap.



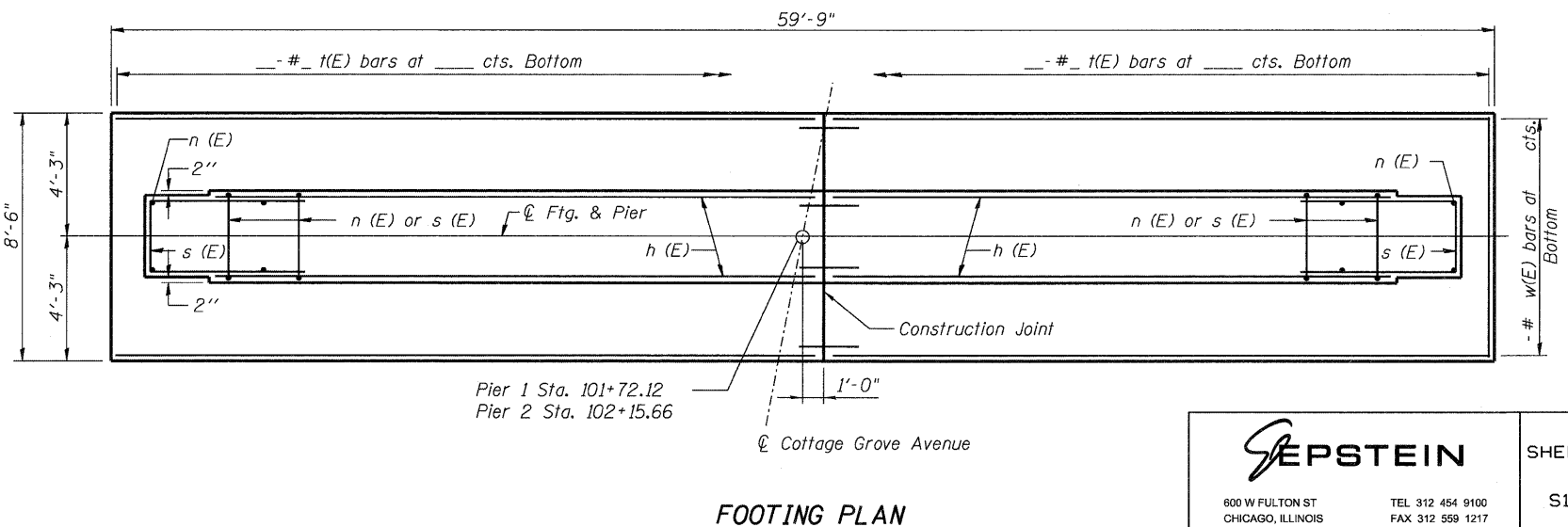
BILL OF MATERIAL

Bar	No.	Size	Length	Shape
h (E)		#		—
h (E)		#		—
n (E)		#		U
n (E)		#		U
n (E)		#		U
p (E)		#		—
p (E)		#		—
p (E)		#		—
s (E)		#		□
s (E)		#		□
s (E)		#		□
s (E)		#		□
s (E)		#		□
t(E)		#		—
v (E)		#		—
w(E)		#		—
Structure Excavation			Cu. Yd.	
Concrete Structures			Cu. Yd.	
Reinforcement Bars, Epoxy Coated			Pound	
Furnishing - Piles,			Foot	
Driving Piles			Foot	
Test Pile,			Each	

A & B DIMENSIONS

Bar	A	B

Elev.	PIER 1	PIER 2
"A"	589.28	590.06
"B"	589.48	590.25
"C"	589.62	590.38
"D"	589.76	590.51
"E"	589.78	590.51
"F"	589.70	590.43
"G"	589.62	590.34
"H"	589.53	590.24



FOR INFORMATION ONLY

PIERS 1 AND 2
STRUCTURE NO. 016-2119

DESIGNED	EV
CHECKED	PC
DRAWN	JCP
CHECKED	JPO

 800 W FULTON ST CHICAGO, ILLINOIS 60661 1259	TEL 312 454 9100 FAX 312 559 1217 WEB www.epstein-si.com	SHEET NO. 17	F.A.I. RTE. 94	SECTION 1314B-1-F	COUNTY COOK	TOTAL SHEETS 19	SHEET NO. 19
		S17 SHEETS	CONTRACT NO. 60K91		ILLINOIS FED. AID PROJECT		

9/15/2010 4:53:08 PM P:\Projects\26000\026225 - IDOT PTB 152\CAD\CADD Sheets\Beam Fabrication\016\243-019-Piers\anc2.dgn