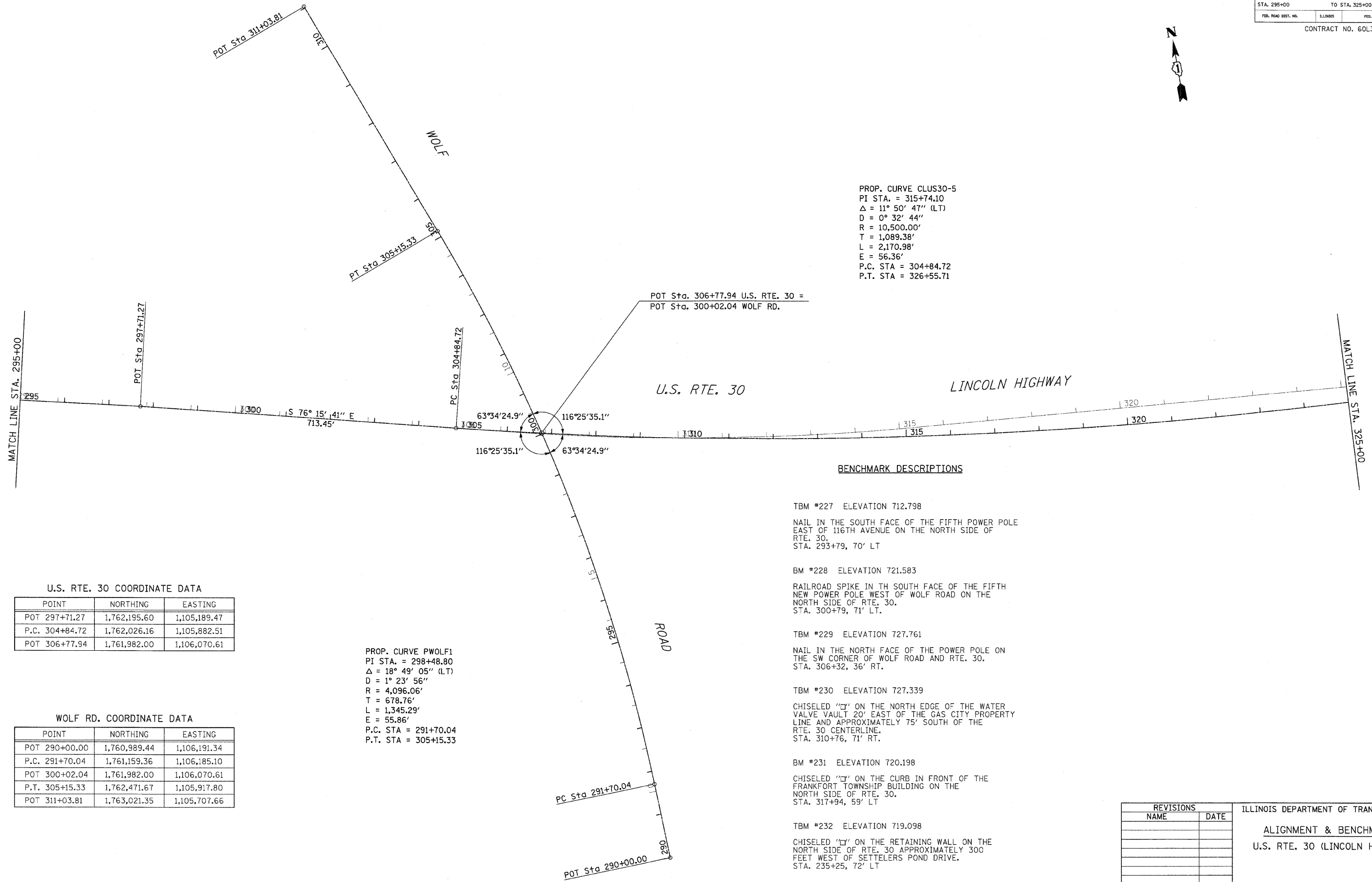


F.A.P. RTE.	SECTION	COUNTY	TOTAL SHEETS	SHEET NO
353	2010-052 DTR	WILL	210	19
STA. 295+00		TO STA. 325+00		
FED. ROAD DIST. NO.	ILLINOIS	FED. AID PROJECT		

CONTRACT NO. 60L33



PROP. CURVE CLUS30-5
 PI STA. = 315+74.10
 $\Delta = 11^\circ 50' 47''$ (LT)
 $D = 0^\circ 32' 44''$
 $R = 10,500.00'$
 $T = 1,089.38'$
 $L = 2,170.98'$
 $E = 56.36'$
 P.C. STA = 304+84.72
 P.T. STA = 326+55.71

POT Sta. 306+77.94 U.S. RTE. 30 =
 POT Sta. 300+02.04 WOLF RD.

BENCHMARK DESCRIPTIONS

- TBM #227 ELEVATION 712.798
 NAIL IN THE SOUTH FACE OF THE FIFTH POWER POLE EAST OF 116TH AVENUE ON THE NORTH SIDE OF RTE. 30.
 STA. 293+79, 70' LT
- BM #228 ELEVATION 721.583
 RAILROAD SPIKE IN TH SOUTH FACE OF THE FIFTH NEW POWER POLE WEST OF WOLF ROAD ON THE NORTH SIDE OF RTE. 30.
 STA. 300+79, 71' LT.
- TBM #229 ELEVATION 727.761
 NAIL IN THE NORTH FACE OF THE POWER POLE ON THE SW CORNER OF WOLF ROAD AND RTE. 30.
 STA. 306+32, 36' RT.
- TBM #230 ELEVATION 727.339
 CHISELED 'C' ON THE NORTH EDGE OF THE WATER VALVE VAULT 20' EAST OF THE GAS CITY PROPERTY LINE AND APPROXIMATELY 75' SOUTH OF THE RTE. 30 CENTERLINE.
 STA. 310+76, 71' RT.
- BM #231 ELEVATION 720.198
 CHISELED 'C' ON THE CURB IN FRONT OF THE FRANKFORT TOWNSHIP BUILDING ON THE NORTH SIDE OF RTE. 30.
 STA. 317+94, 59' LT
- TBM #232 ELEVATION 719.098
 CHISELED 'C' ON THE RETAINING WALL ON THE NORTH SIDE OF RTE. 30 APPROXIMATELY 300 FEET WEST OF SETTLERS POND DRIVE.
 STA. 235+25, 72' LT

U.S. RTE. 30 COORDINATE DATA

POINT	NORTHING	EASTING
POT 297+71.27	1,762,195.60	1,105,189.47
P.C. 304+84.72	1,762,026.16	1,105,882.51
POT 306+77.94	1,761,982.00	1,106,070.61

WOLF RD. COORDINATE DATA

POINT	NORTHING	EASTING
POT 290+00.00	1,760,989.44	1,106,191.34
P.C. 291+70.04	1,761,159.36	1,106,185.10
POT 300+02.04	1,761,982.00	1,106,070.61
P.T. 305+15.33	1,762,471.67	1,105,917.80
POT 311+03.81	1,763,021.35	1,105,707.66

PROP. CURVE PWOLF1
 PI STA. = 298+48.80
 $\Delta = 18^\circ 49' 05''$ (LT)
 $D = 1^\circ 23' 56''$
 $R = 4,096.06'$
 $T = 678.76'$
 $L = 1,345.29'$
 $E = 55.86'$
 P.C. STA = 291+70.04
 P.T. STA = 305+15.33

REVISIONS	
NAME	DATE

ILLINOIS DEPARTMENT OF TRANSPORTATION
ALIGNMENT & BENCHMARKS
 U.S. RTE. 30 (LINCOLN HIGHWAY)
 SCALE : 1" = 100'
 DATE : / /
 DRAWN BY : BAE
 CHECKED BY : GB