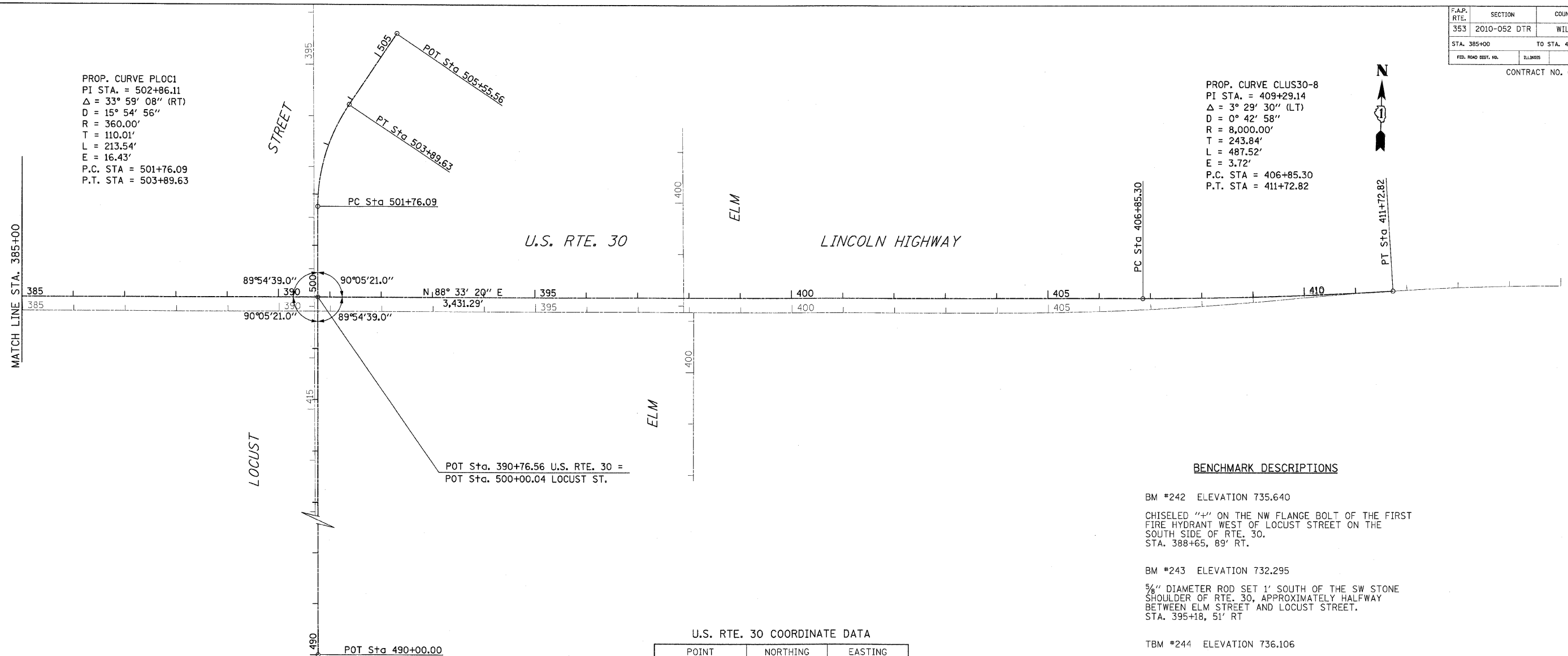


F.A.P. RTE.	SECTION	COUNTY	TOTAL SHEETS	SHEET NO.
353	2010-052 DTR	WILL	210	21
STA. 385+00		TO STA. 415+00		
FED. ROAD DIST. NO.	ILLINOIS	FED. AID PROJECT		

CONTRACT NO. 60L33

PROP. CURVE PLOC1  
 PI STA. = 502+86.11  
 $\Delta = 33^\circ 59' 08''$  (RT)  
 $D = 15^\circ 54' 56''$   
 $R = 360.00'$   
 $T = 110.01'$   
 $L = 213.54'$   
 $E = 16.43'$   
 P.C. STA = 501+76.09  
 P.T. STA = 503+89.63

PROP. CURVE CLUS30-8  
 PI STA. = 409+29.14  
 $\Delta = 3^\circ 29' 30''$  (LT)  
 $D = 0^\circ 42' 58''$   
 $R = 8,000.00'$   
 $T = 243.84'$   
 $L = 487.52'$   
 $E = 3.72'$   
 P.C. STA = 406+85.30  
 P.T. STA = 411+72.82



POT Sta. 390+76.56 U.S. RTE. 30 =  
 POT Sta. 500+00.04 LOCUST ST.

**BENCHMARK DESCRIPTIONS**

- BM #242 ELEVATION 735.640  
 CHISELED "+" ON THE NW FLANGE BOLT OF THE FIRST FIRE HYDRANT WEST OF LOCUST STREET ON THE SOUTH SIDE OF RTE. 30.  
 STA. 388+65, 89' RT.
- BM #243 ELEVATION 732.295  
 3/8" DIAMETER ROD SET 1' SOUTH OF THE SW STONE SHOULDER OF RTE. 30, APPROXIMATELY HALFWAY BETWEEN ELM STREET AND LOCUST STREET.  
 STA. 395+18, 51' RT
- TBM #244 ELEVATION 736.106  
 MAG NAIL ON THE GUARD RAIL POST APPROXIMATELY 200' EAST OF ELM STREET ON THE SOUTH SIDE OF RTE. 30.  
 STA. 400+53, 51' RT
- BM #245 ELEVATION 735.534  
 RAILROAD SPIKE IN THE SOUTH FACE OF THE POWER POLE OPPOSITE THE FIRST NATIONAL BANK BUILDING ON THE NORTH SIDE OF RTE. 30.  
 (APPROXIMATELY 1000' WEST OF RTE.45).  
 STA. 406+27, 71' LT.
- TBM #246 ELEVATION 728.423  
 NAIL IN THE NORTH FACE OF THE THIRD POWER POLE WEST OF RTE. 45 ON THE SOUTH SIDE OF RTE. 30.  
 STA. 412+64, 64' RT.

**U.S. RTE. 30 COORDINATE DATA**

POINT	NORTHING	EASTING
POT 390+76.56	1,763,104.49	1,114,167.78
P.C. 406+85.30	1,763,145.04	1,115,776.01
P.T. 411+72.82	1,763,172.17	1,116,262.70

**LOCUST ST. COORDINATE DATA**

POINT	NORTHING	EASTING
POT 490+00.00	1,762,104.81	1,114,194.54
POT 500+00.04	1,763,104.49	1,114,167.78
P.C. 501+76.09	1,763,280.48	1,114,163.07
P.T. 503+89.63	1,763,483.29	1,114,219.15
POT 505+55.56	1,763,623.31	1,114,308.18

REVISIONS	
NAME	DATE

ILLINOIS DEPARTMENT OF TRANSPORTATION  
**ALIGNMENT & BENCHMARKS**  
 U.S. RTE. 30 (LINCOLN HIGHWAY)

SCALE : 1" = 100'  
 DATE : / / DRAWN BY : BAE  
 CHECKED BY : GB