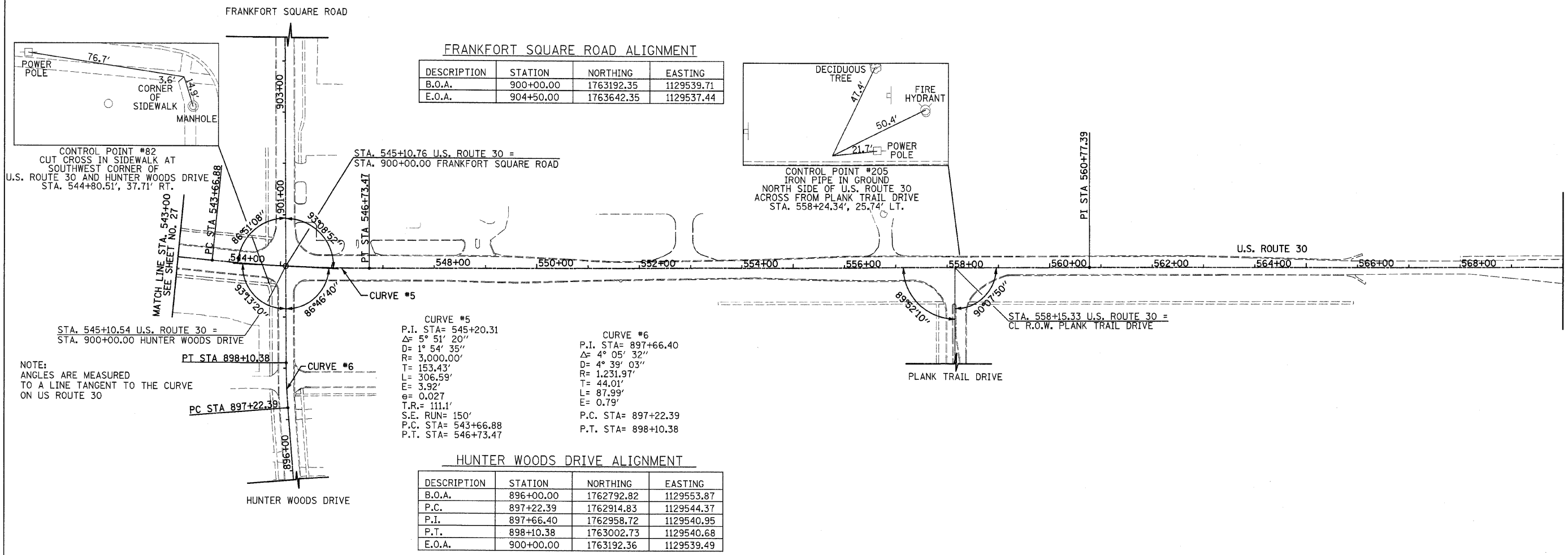
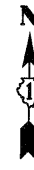


F.A.P. RTE.	SECTION	COUNTY	TOTAL SHEETS	SHEET NO.
353	2010-052 DTR	WILL	210	28
STA. 543+00		TO STA. 570+00		
FED. ROAD DIST. NO. 1 ILLINOIS FED. AID PROJECT				



**FRANKFORT SQUARE ROAD ALIGNMENT**

DESCRIPTION	STATION	NORTHING	EASTING
B.O.A.	900+00.00	1763192.35	1129539.71
E.O.A.	904+50.00	1763642.35	1129537.44

**CURVE #5**

P.I. STA=	545+20.31
Δ=	5° 51' 20"
D=	1° 54' 35"
R=	3,000.00'
T=	153.43'
L=	306.59'
E=	3.92'
g=	0.027
T.R.=	111.1'
S.E. RUN=	150'
P.C. STA=	543+66.88
P.T. STA=	546+73.47

**CURVE #6**

P.I. STA=	897+66.40
Δ=	4° 05' 32"
D=	4° 39' 03"
R=	1,231.97'
T=	44.01'
L=	87.99'
E=	0.79'
P.C. STA=	897+22.39
P.T. STA=	898+10.38

**HUNTER WOODS DRIVE ALIGNMENT**

DESCRIPTION	STATION	NORTHING	EASTING
B.O.A.	896+00.00	1762792.82	1129553.87
P.C.	897+22.39	1762914.83	1129544.37
P.I.	897+66.40	1762958.72	1129540.95
P.T.	898+10.38	1763002.73	1129540.68
E.O.A.	900+00.00	1763192.36	1129539.49

NOTE:  
 ANGLES ARE MEASURED  
 TO A LINE TANGENT TO THE CURVE  
 ON US ROUTE 30

NOTE:  
 THREE TIE POINTS ARE PROVIDED ONLY TO FIND  
 GENERAL LOCATION OF CONTROL POINT, NOT TO  
 ACCURATELY RECREATE POINT

**CONTROL POINTS**

C.P. #	NORTHING	EASTING	STATION	OFFSET	ELEVATION
82	1763156.37	1129507.25	544+80.51	37.71' RT.	730.54
205	1763219.38	1130853.11	558+24.34	25.74' LT.	743.95

NOTES:  
 EXISTING ROAD CONFIGURATION SHOWN  
 B.O.A. = BEGINNING OF ALIGNMENT  
 P.C. = POINT OF CURVATURE  
 P.R.C. = POINT OF REVERSE CURVATURE  
 P.T. = POINT OF TANGENT  
 P.I. = POINT OF INTERSECTION  
 E.O.A. = END OF ALIGNMENT  
 B.M. = BENCHMARK  
 C.P. = CONTROL POINT

REVISIONS	
NAME	DATE

ILLINOIS DEPARTMENT OF TRANSPORTATION  
 U.S. ROUTE 30  
 ALIGNMENT, TIES AND BENCHMARKS  
 STATION 543+00 TO STATION 570+00

100 0 100  
 SCALE IN FEET

DATE 5/5/2010

DRAWN BY JRR  
 CHECKED BY JRV