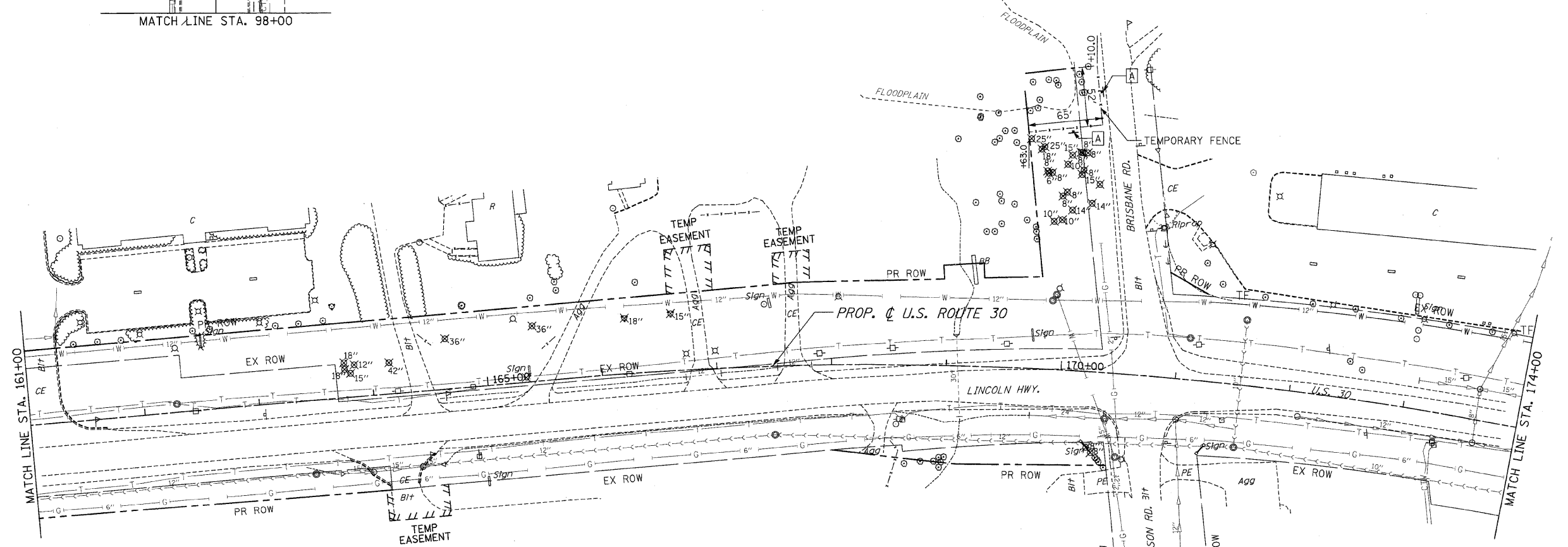
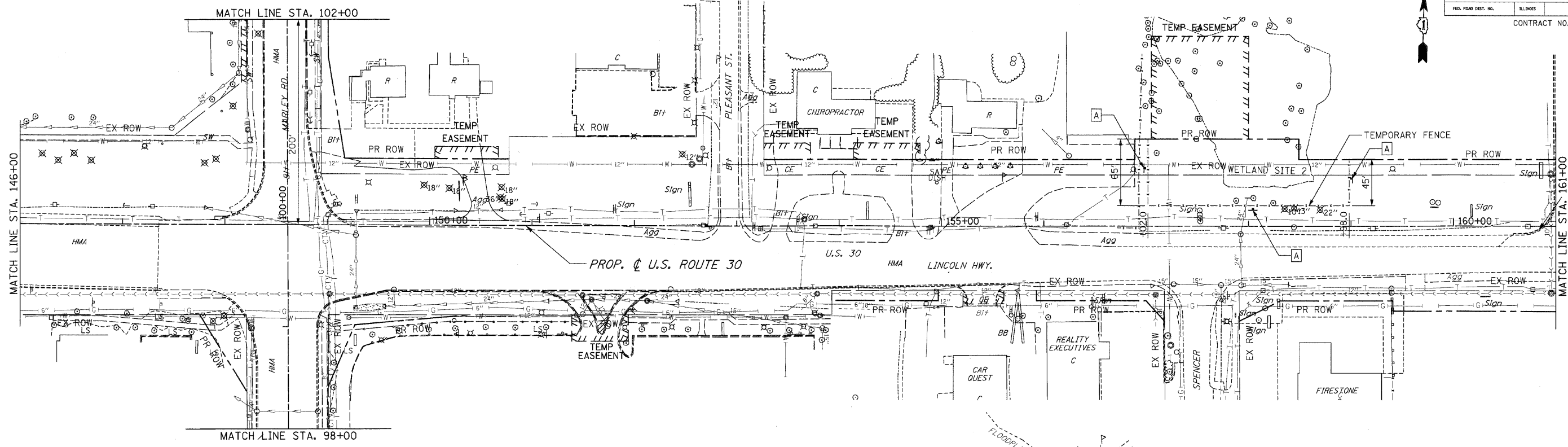


F.A.P. RTE.	SECTION	COUNTY	TOTAL SHEETS	SHEET NO.
353	2010-052 DTR	WILL	210	31
STA. 146+00		TO STA. 174+00		
FED. ROAD DIST. NO.	ILLINOIS	FED. AID PROJECT		
CONTRACT NO. 60L33				



- NOTES:
1. FOR REMOVAL NOTES SEE FIRST PAGE REMOVAL PLANS.
 2. FOR REMOVAL LEGEND SEE FIRST PAGE REMOVAL PLANS.

REVISIONS		ILLINOIS DEPARTMENT OF TRANSPORTATION
NAME	DATE	
		REMOVAL PLANS U.S. RTE. 30 (LINCOLN HIGHWAY) STA. 146+00 TO STA. 174+00 SCALE : 1" = 50' DRAWN BY : CAT DATE : 05/03/10 CHECKED BY : GB