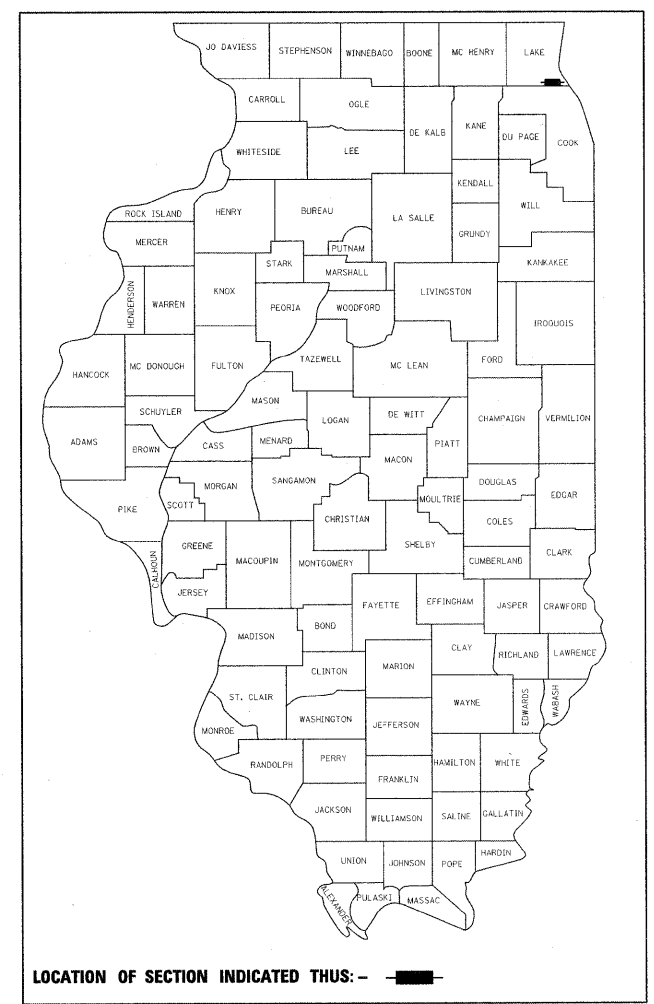


STATE OF ILLINOIS
DEPARTMENT OF TRANSPORTATION
DIVISION OF HIGHWAYS
PROPOSED
HIGHWAY PLANS
F.A.P. ROUTE 337 (ILLINOIS ROUTE 22)
EAST OF I-94 TO WEST OF US 41
SECTION 2010-062-DTR

F.A.P. RTE.	SECTION	COUNTY	TOTAL SHEETS	SHEET NO.
337	2010-062-DTR	LAKE	56*	1
		ILLINOIS	CONTRACT NO. 60L41	

*56 + 6 = 62

D-91-531-99



LOCATION OF SECTION INDICATED THIS: - [rectangle] -

FOR INDEX OF SHEETS, SEE SHEET NO. 2

DESIGN DESIGNATION

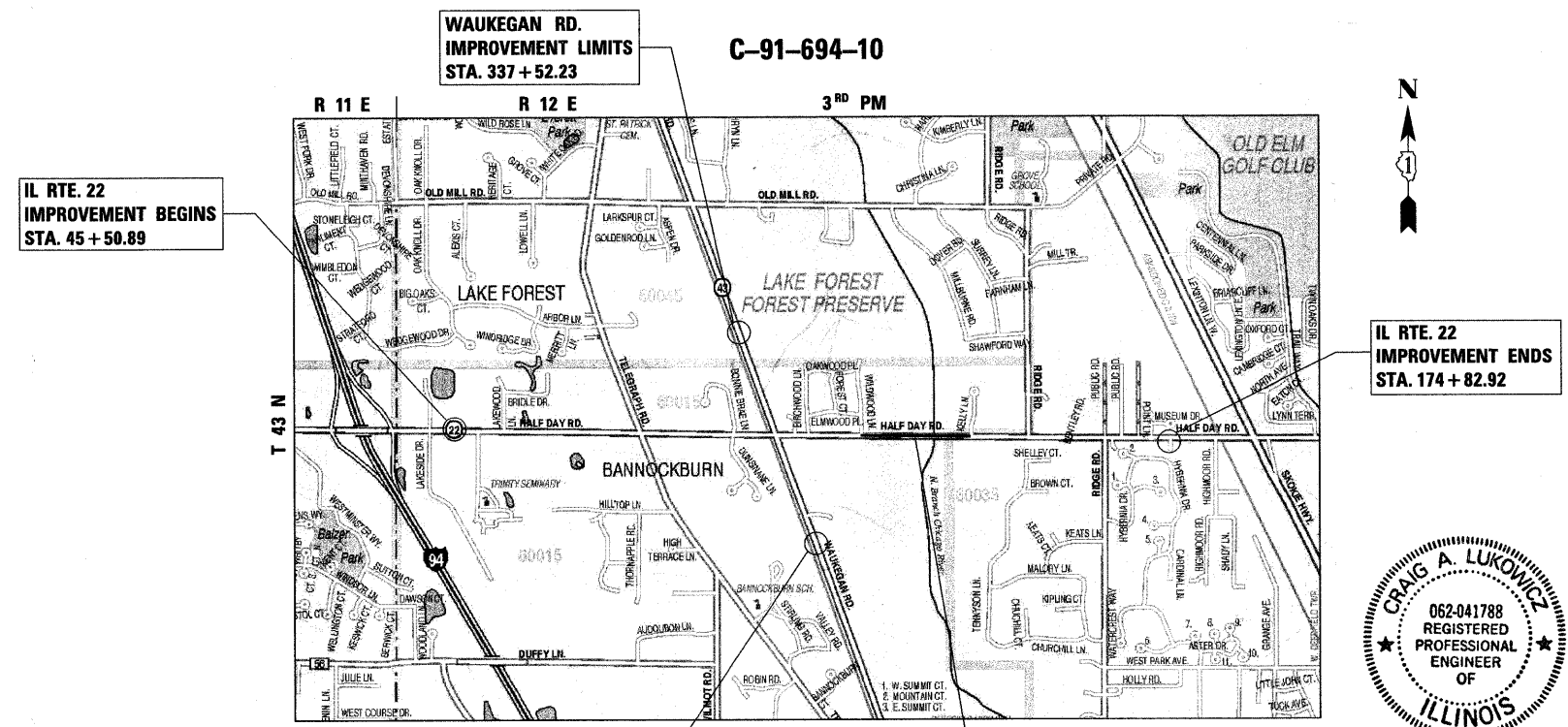
784(20) ARTERIAL 7.08 (PCC-20)

	1995	2020
ADT IL. ROUTE 22:	21,800	37,000
POSTED SPEED LIMIT IL. ROUTE 22:	40 MPH	
DESIGN SPEED LIMIT IL. ROUTE 22:	45 MPH	
ADT IL. ROUTE 43:	24,100	26,000
POSTED SPEED LIMIT IL. ROUTE 43:	40 MPH	
DESIGN SPEED LIMIT IL. ROUTE 43:	45 MPH	

PROJECT LOCATED IN:

- BANNOCKBURN
- HIGHLAND PARK
- LAKE COUNTY

ADVANCE WORK - TREE REMOVAL
LAKE COUNTY



IL RTE. 22
IMPROVEMENT BEGINS
STA. 45 + 50.89

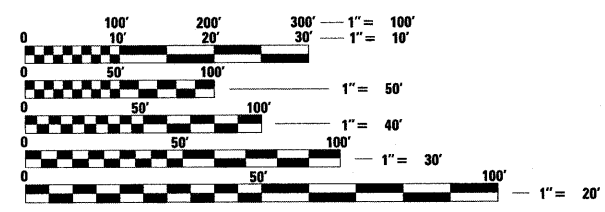
WAUKEGAN RD.
IMPROVEMENT LIMITS
STA. 337 + 52.23

C-91-694-10

IL RTE. 22
IMPROVEMENT ENDS
STA. 174 + 82.92

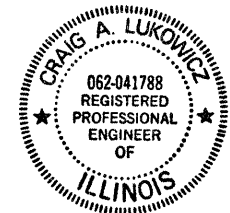
WAUKEGAN RD.
IMPROVEMENT LIMITS
STA. 315 + 61.62

BRIDGE OMISSION
FROM STA. 115 + 12.03
TO STA. 133 + 02.52



FULL SIZE PLANS HAVE BEEN PREPARED USING STANDARD ENGINEERING SCALES. REDUCED SIZED PLANS WILL NOT CONFORM TO STANDARD SCALES. IN MAKING MEASUREMENTS ON REDUCED PLANS, THE ABOVE SCALES MAY BE USED.

J.U.L.I.E.
JOINT UTILITY LOCATION INFORMATION FOR EXCAVATION
1-800-892-0123
OR 811



Craig A. Lukowicz
 CRAIG A. LUKOWICZ
 ILLINOIS REGISTERED PROFESSIONAL ENGINEER NO. 062-041788
 MY LICENSE EXPIRES ON 11-30-11.

CONSULTING ENGINEERS SCIENTISTS & LAND SURVEYORS
BL Bollinger, Lach & Associates, Inc.
 333 PIERCE ROAD SUITE 200 ITASCA, IL 60143
 P(630) 438 6400 F(630) 438 6444 www.bollingerlach.com
 ITASCA * CHICAGO * ALGONQUIN * LAKE GENEVA * SOUTH BEND * INDIANAPOLIS

STATE OF ILLINOIS
 DEPARTMENT OF TRANSPORTATION
 DIVISION OF HIGHWAYS

SUBMITTED MAY 10, 2010

Diana M. O'Keefe DEPUTY DIRECTOR OF HIGHWAYS, REGION ENGINEER

June 25 2010
Scott E. Stitt, P.E. acting ENGINEER OF DESIGN AND ENVIRONMENT

June 25 2010
Christine M. Reed DIRECTOR OF HIGHWAYS, CHIEF ENGINEER

PROJECT MANAGER: RAJENDRA C. SHAH

GROSS LENGTH = 12,932.03 FT. = 2.449 MILE
 NET LENGTH = 11,141.54 FT. = 2.110 MILE

CONTRACT NO. 60L41

**PRINTED BY THE AUTHORITY
 OF THE STATE OF ILLINOIS**