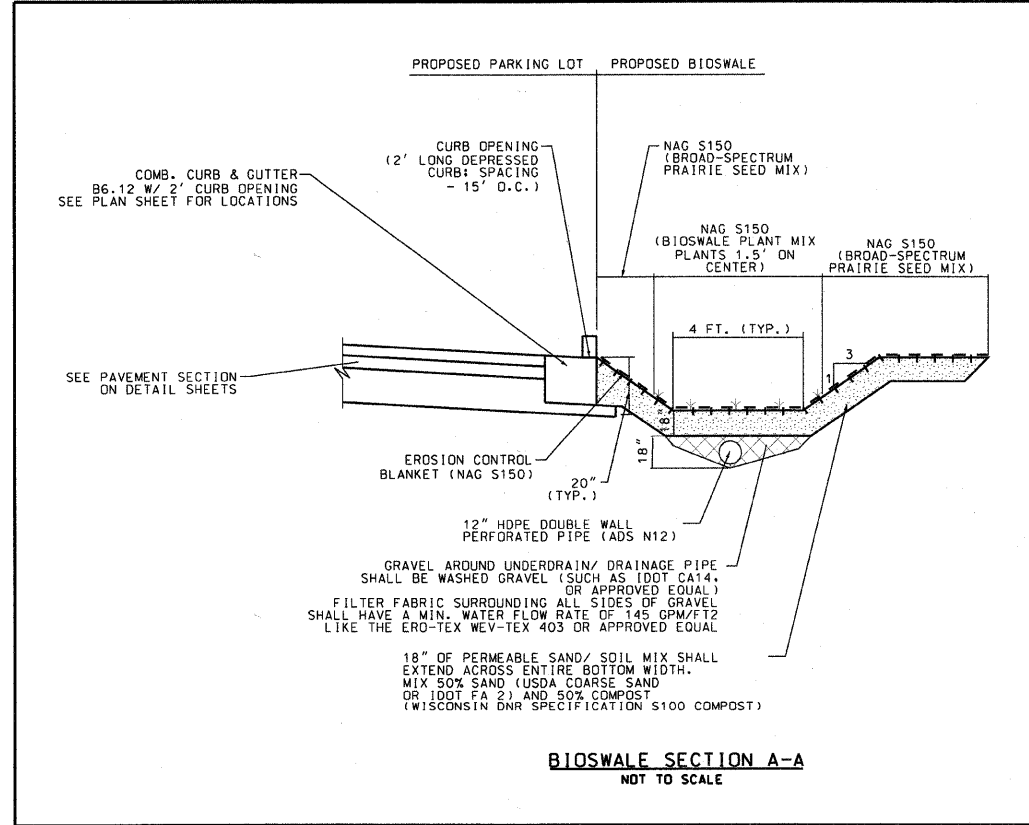
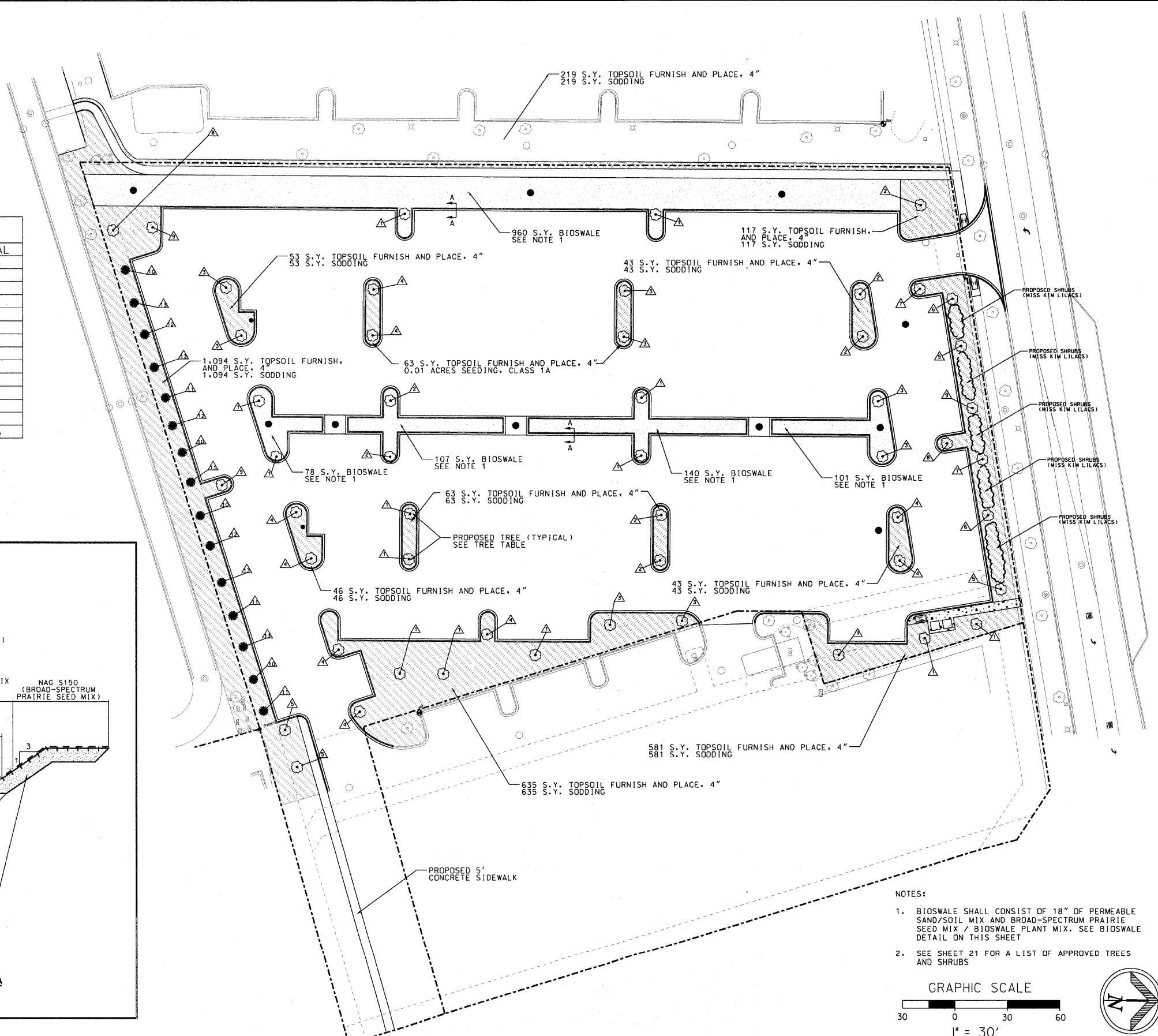
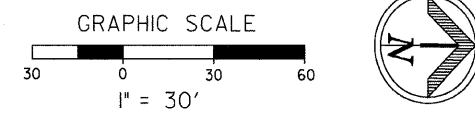


| TREE LIST |                 |                         |       |
|-----------|-----------------|-------------------------|-------|
| KEY       | COMMON NAME     | LATIN NAME              | TOTAL |
| 1         | SWAMP WHITE OAK | QUERCUS BICOLOR         | 14    |
| 2         | HACKBERRY       | CELTIS OCCIDENTALIS     | 7     |
| 3         | HYBRID ELM      | ULMUS X                 | 8     |
| 4         | BALD CYPRESS    | TAXODIUM DISTICHUM      | 9     |
| 5         | HONEYLOCUST     | GLEDITIA TRIACANTHOS    | 4     |
| 6         | TULIP TREE      | LIRIODENDRON TULIPIFERA | 2     |
| 7         | RED OAK         | QUERCUS RUBRA           | 2     |
| 8         | BASSWOOD        | TILIA AMERICANA         | 2     |
| 9         | BURR OAK        | QUERCUS MACROCARPA      | 3     |
| 10        | AUSTRIAN PINE   | PINUS NIGRA             | 4     |
| 11        | BALSAM FIR      | ABIES BALSAMEA          | 4     |
| 12        | SERBIAN SPRUCE  | PICEA OMDRIKA           | 3     |
| 13        | WHITE PINE      | PINUS STROBUS           | 4     |
|           | TOTAL           |                         | 66    |



- NOTES:
- BIOSWALE SHALL CONSIST OF 18" OF PERMEABLE SAND/SOIL MIX AND BROAD-SPECTRUM PRAIRIE SEED MIX / BIOSWALE PLANT MIX. SEE BIOSWALE DETAIL ON THIS SHEET
  - SEE SHEET 21 FOR A LIST OF APPROVED TREES AND SHRUBS



|                               |           |          |          |          |         |                   |
|-------------------------------|-----------|----------|----------|----------|---------|-------------------|
| <b>PLANS PREPARED BY:</b><br> | SURVEY    | DJG      | DESIGNED | DJG      | REVISED | 10/05/09 PER BLRS |
|                               | UTILITIES | JC       | DRAWN    | DJG      | REVISED |                   |
|                               | CHECKED   | DJG      | CHECKED  | LVA      | REVISED |                   |
|                               | DATE      | 04-23-09 | DATE     | 09-17-09 | REVISED |                   |
|                               |           |          |          |          |         |                   |

**VILLAGE OF GLENVIEW  
PROJECT E 08-56**

|                                       |                           |
|---------------------------------------|---------------------------|
| <b>LANDSCAPE PLAN</b>                 |                           |
| <b>COMPASS ROAD SOUTH PARKING LOT</b> |                           |
| SCALE: 1" = 30'                       | SHEET NO. 18 OF 24 SHEETS |

|                             |                |        |              |                    |
|-----------------------------|----------------|--------|--------------|--------------------|
| F.A. RTE.                   | SECTION        | COUNTY | TOTAL SHEETS | SHEET NO.          |
| NA                          | 08-00169-00-PK | COOK   | 24           | 18                 |
|                             |                |        |              | CONTRACT NO. 63360 |
| ILLINOIS / FED. AID PROJECT |                |        |              |                    |