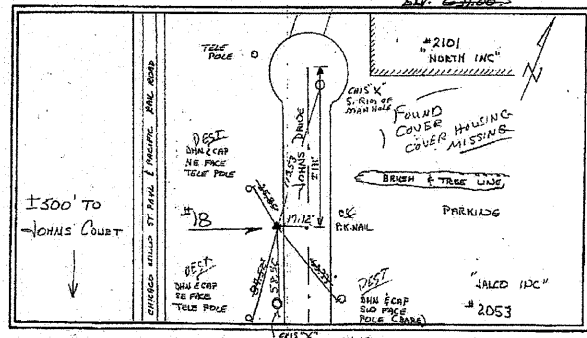


STATION: 18
2002 HORIZONTAL CONTROL DATA
AYRES ASSOCIATES
 SET BY: Owen Ayres & Associates Inc.
 2445 Darwin Road
 Madison, WI 53704-3192, (608)249-0471
 PROJECT: GLENVIEW ILLINOIS NO. 3381.00 STATION: 18
 GPS 2ND ORDER TRAVERSE STATE: ILLINOIS
 TYPE OF MARK: BERNSTEIN GPS 3D MON. YEAR SET: 1992 COUNTY: COOK
 ILLINOIS 1983 SYSTEM OF PLANE COORDINATES ILLINOIS EAST ZONE
 COMBINATION FACTOR: 0.99996795 QUADRANGLE: PARK RIDGE
 NORTHING: 1,977,302.302' EASTING: 1,125,189.347' DELTA ANGLE: 0-20-53

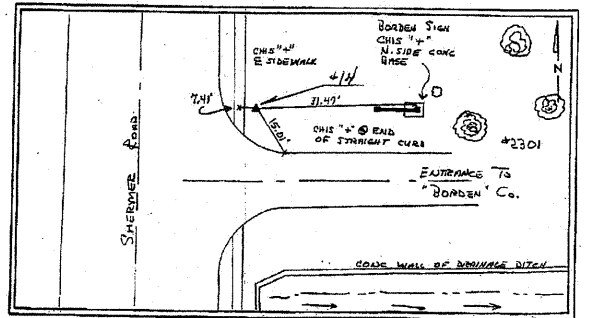
To Station North Azimuth Bearing Grid Distance
 COVER MISSING REC. OK
 CAP AT GPD 4-8-02
 COULD NOT FLUSH
 TARGET PT. IS IN GRAVEL

LOCALITY: IN GLENVIEW, ABOUT 0.8 MILES WEST AND 300 FEET SOUTH OF THE NORTHEAST CORNER OF SECTION 27, T42N, R12E. ABOUT 0.6 MILES NORTH-NORTHWEST FROM THE INTERSECTION OF JONAS DR. AND CHESTNUT AVE. THE STATION IS A "B" MONUMENT WITH THE ACCESS COVER FLUSH WITH THE GROUND.



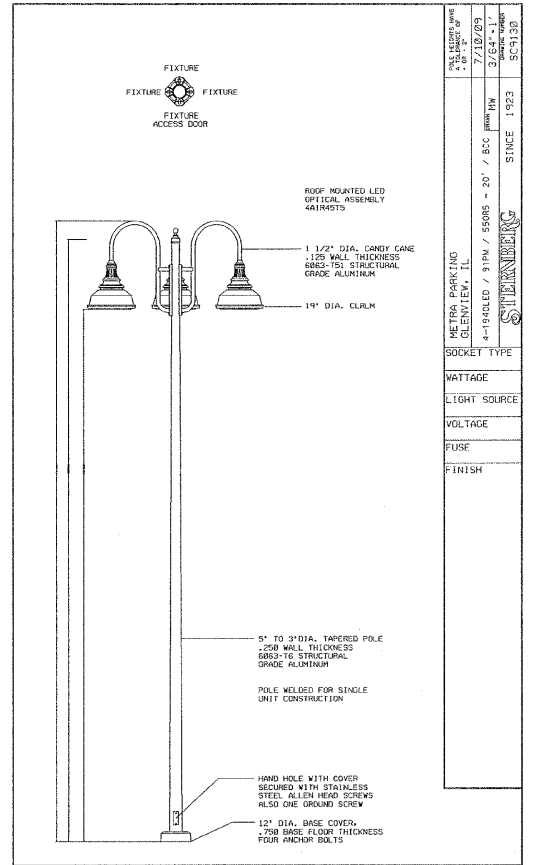
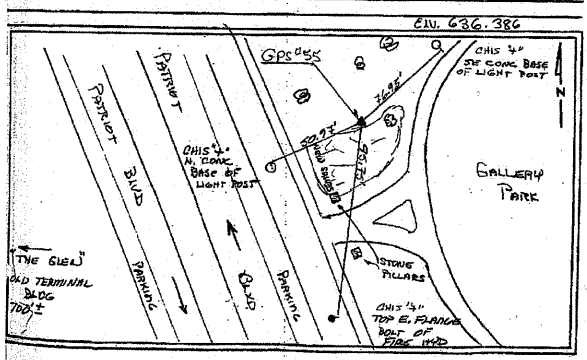
STATION: 14
2002 HORIZONTAL CONTROL DATA
AYRES ASSOCIATES
 PIN Number of Property 04-22-100-038-9999 Station Number 14
 Horizontal Control -- Illinois State Plane Coordinates
 Northing 1,982,711.960' N Easting 1,121,040.199' E
 Vertical Control -- UGGS Elevations
 Elevation 647.75'
 Description of the Control's Location --
 A "GPS" monument on the E side of Sherman Road, beyond the sidewalk, approximately 0.2 mi S of Raymond Drive, and just N of the entrance to Borden & Co. (Northbrook), 7.41' E-ly of the centerline of the sidewalk, 31.47' W-ly of a "4" cut in the N side of the concrete base to a sign, and 15.01' N-ly of a "4" cut at the end of the straight curb on the N side of Borden's driveway.
 Streets in Close Proximity -- Separate street names with semi-colons
 SHERMAN ROAD; VALENCIA DRIVE; RAYMOND DRIVE; WILLOW ROAD

Verified in 2002



STATION: 55
2002 HORIZONTAL CONTROL DATA
AYRES ASSOCIATES
 PROJECT: GLENVIEW ILLINOIS 2002 NO. 723.00 STATION: 55
 GPS 2ND ORDER TRAVERSE STATE: ILLINOIS
 TYPE OF MARK: BERNSTEIN GPS 3D MON. YEAR SET: 2002 COUNTY: COOK
 ILLINOIS 1983 SYSTEM OF PLANE COORDINATES ILLINOIS EAST ZONE
 COMBINATION FACTOR: 0.99996795 QUADRANGLE: PARK RIDGE
 NORTHING: 1,975,989.431' EASTING: 1,122,689.604' DELTA ANGLE: 0-20-53

LOCALITY: IN GLENVIEW ILL. ABOUT 0.25 MILE NORTH AND 0.1 MILE WEST OF THE CORNER 27, T42N, R12E.



HOT-MIX ASPHALT MIXTURE REQUIREMENTS	
MIXTURE TYPE	AIR VOIDS @Ndes
FULL DEPTH PAVEMENT	
HOT-MIX ASPHALT SURFACE COURSE MIX "D", N50 (IL 9.5 mm); 1.5"	4% @ 50 GYR.
HOT-MIX ASPHALT BINDER COURSE IL 19, N50; 2.5"	4% @ 50 GYR.
HMA BASE COURSE (HMA BINDER IL-19 MM); 4"	4% @ 50 GYR.

THE UNIT WEIGHT USED TO CALCULATE ALL HMA SURFACE MIXTURE QUANTITIES IS 112 LBS/SQ YD / IN.
 THE "AC TYPE" FOR POLYMERIZED HMA MIXES SHALL BE "SBS/SBR PG 70-22" AND FOR NON POLYMERIZED HMA THE "AC TYPE" SHALL BE "PG 64-22" UNLESS MODIFIED BY DISTRICT SPECIAL PROVISIONS.
 FOR "PERCENT OF RAP" SEE DISTRICT ONE SPECIAL PROVISIONS.

