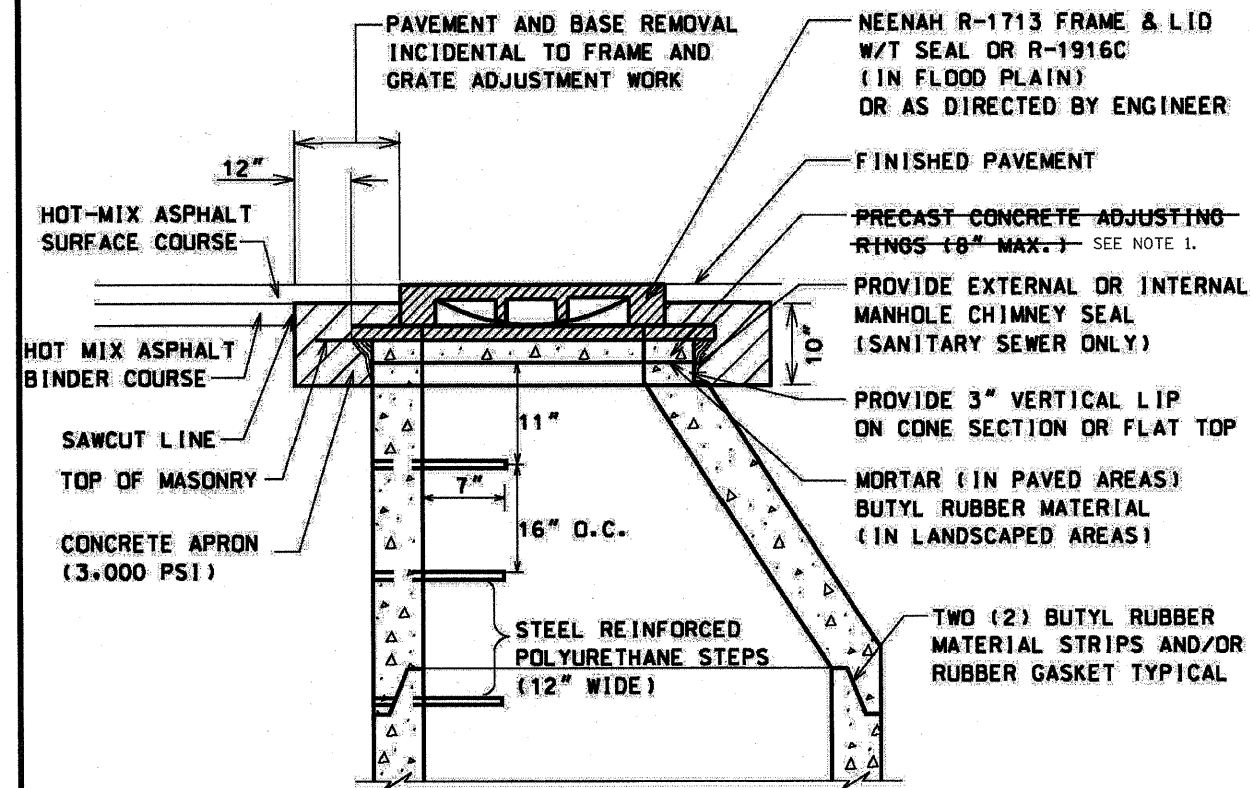


U-1



NOTE:

THE REQUIRED MANHOLE FRAME AND GRATE ADJUSTMENTS, DUE TO THE PAVEMENT RESURFACING, INCLUDING POURING OF CONCRETE APRON, SHALL BE PERFORMED BEFORE PLACING HOT-MIX ASPHALT SURFACE COURSE.

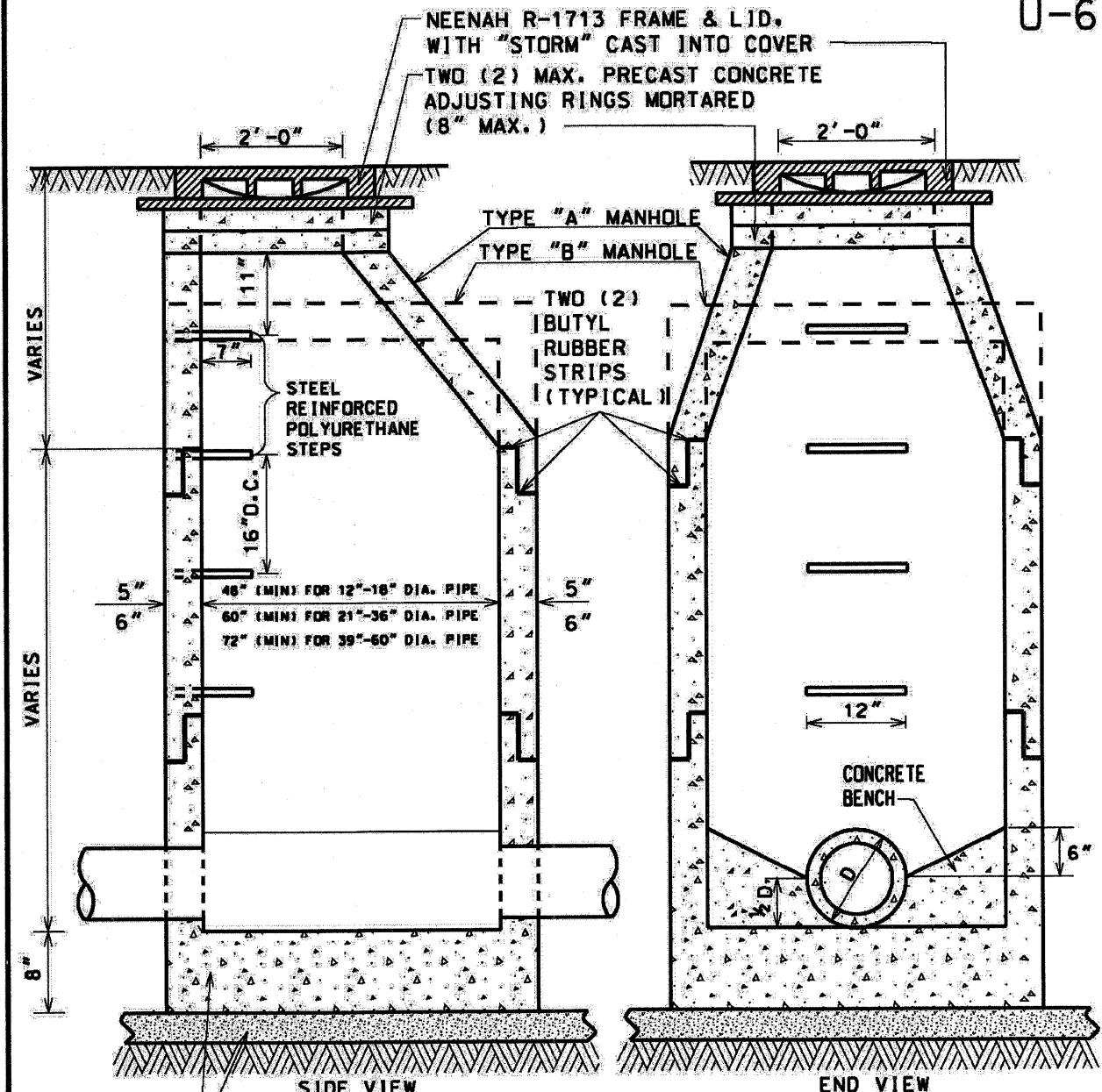
NOTE 1.
CONTRACTOR SHALL USE HIGH DENSITY POLYETHYLENE (HDPE) PLASTIC ADJUSTING RINGS IN ACCORDANCE WITH THE APPLICABLE SECTIONS OF THE IDOT STANDARD SPECIFICATIONS, INCLUDING SECTION 1043.02.

NOT TO SCALE

**STRUCTURE
FRAME & GRATE
ADJUSTMENT
DETAIL**

REVISED: 01-01-09

U-6



NOTES:

1. MANHOLES MUST CONFORM TO ASTM C-478.
 2. MANHOLE SECTIONS TO BE TONGUE AND GROOVED.
 3. BENCHES MUST BE PROVIDED IN ALL STORM SEWER MANHOLES.
 4. ALL PIPE PENETRATIONS OCCURRING WITHIN (OR BELOW) GROUNDWATER TABLE AND ALL NON-PRECAST OPENINGS SHALL BE CORED, RUBBER BOOTED AND INTERIOR MORTARED AROUND PIPE.*
 5. USE ECCENTRIC CONE ONLY.
- * SEE PIPE CONNECTION TO STRUCTURE DETAIL U-5.

NOT TO SCALE

**STORM
MANHOLE
DETAIL**

REVISED: 01-01-09

PLOT DATE = 08/19/09
USER NAME = RUSBY
PLOT SCALE = 8/16/09
FILE NAME = 8/16/09

Burns & McDonnell
1431 OPUS PLACE, SUITE 400
DOWNERS GROVE, IL 60515
PHONE: (630) 724-3200
FAX: (630) 724-3201
WEB: WWW.BURNSMCD.COM

DESIGNED - RB	REVISED -	REVISED -
CHECKED - JMT	REVISED -	REVISED -
DRAWN - RB	REVISED -	REVISED -
CHECKED - 08/19/09	REVISED -	REVISED -

**VILLAGE OF GLENVIEW
GLENVIEW ROAD RESURFACING
PROJECT (EAST)**

VILLAGE OF GLENVIEW STANDARD DETAILS

SCALE: SHEET NO. 1 OF 2 SHEETS STA. TO STA.

F.A.U. RTE. 1297	SECTION 09-00173-00-RS	COUNTY LAKE	TOTAL SHEETS 18	SHEET NO. 9
FED. ROAD DIST. NO. ILLINOIS FED. AID PROJECT CONTRACT NO. 63361				