

FOR INDEX OF SHEETS, SEE SHEET NO. 2

FOR INDEX OF HIGHWAY STANDARDS, SEE SHEET NO. 2

PROJECT LOCATED IN THE VILLAGE OF BUFFALO GROVE

STATE OF ILLINOIS
DEPARTMENT OF TRANSPORTATION
DIVISION OF HIGHWAYS

PLANS FOR PROPOSED
FEDERAL AID HIGHWAY
F.A.U. ROUTE 2666 MAIN STREET

FROM ILLINOIS ROUTE 22 (F.A.P. 337) TO BUFFALO GROVE ROAD (F.A.U. 2657)
LAPP RESURFACING

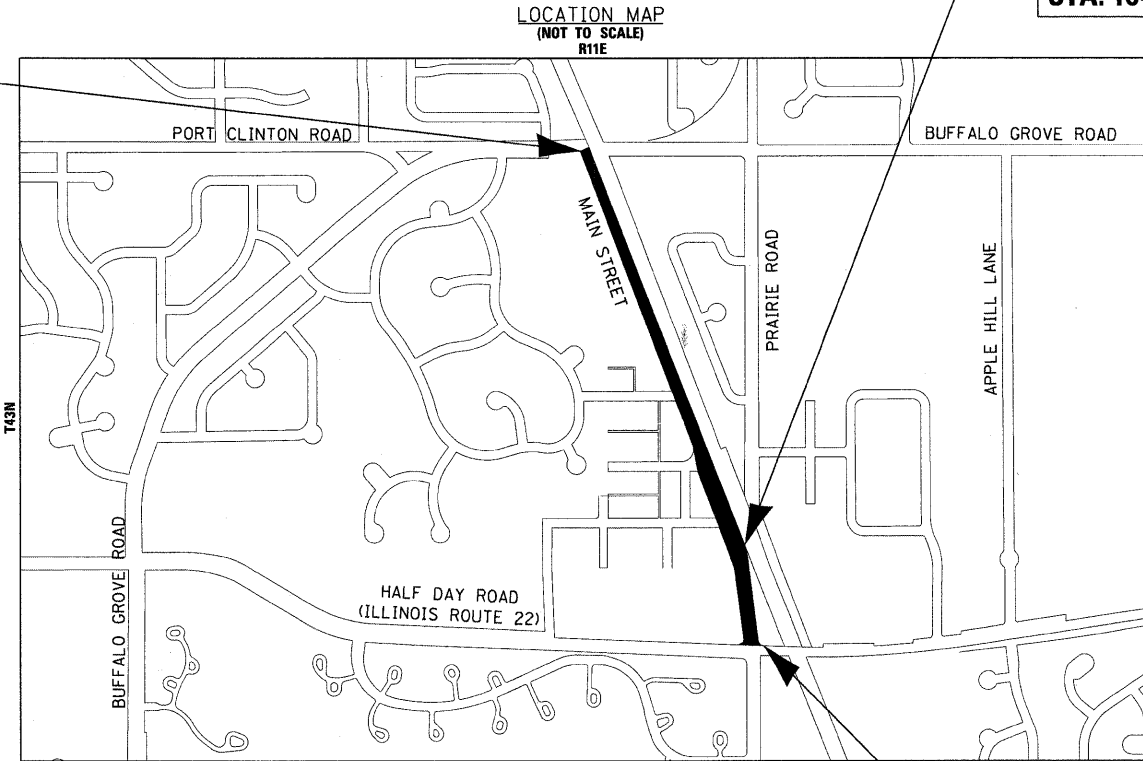
PROJECT NO.: ARA-9003(507)
SECTION NO.: 09-00096-00-RS
JOB NO.: C-91-126-10
VILLAGE OF BUFFALO GROVE
LAKE COUNTY

THE REVIEW AND APPROVAL OF THESE FINAL ENGINEERING PLANS AND SPECIFICATIONS BY THE LAKE COUNTY DIVISION OF TRANSPORTATION DOES NOT CONSTITUTE A RELEASE FROM OR GRANT OF VARIATION FROM THE RULES, REGULATIONS, AND SPECIFICATIONS REQUIRED IN THE LAKE COUNTY HIGHWAY UTILITY AND FACILITY PLACEMENT ORDINANCE, LATEST EDITION, AS AMENDED, OR ANY SUCCESSOR DOCUMENT OR DOCUMENTS THERETO. THE PERMITTEE, THE PERMITTEE'S DESIGNATED REPRESENTATIVES, AND/OR ALL SUCCESSORS AND ASSIGNS SHALL BE SOLELY RESPONSIBLE FOR ALL WORK AND IMPROVEMENTS WITHIN THE LIMITS OF THE COUNTY HIGHWAY RIGHT-OF-WAY, UNLESS OTHERWISE SPECIFIED, APPROVED IN WRITING BY THE LAKE COUNTY COUNTY ENGINEER, AND ON FILE WITH THE LAKE COUNTY DIVISION OF TRANSPORTATION, ALL WORK AND MATERIALS NECESSARY TO CONSTRUCT UTILITIES AND FACILITIES AND RESTORE THE RIGHT-OF-WAY WITHIN THE LIMITS OF THE COUNTY HIGHWAY SHALL BE IN CONFORMANCE WITH THE RULES, REGULATIONS, AND SPECIFICATIONS OF THE LAKE COUNTY UTILITY AND FACILITY PLACEMENT ORDINANCE, LATEST EDITION, AS AMENDED, OR ANY SUCCESSOR DOCUMENT OR DOCUMENTS THERETO.

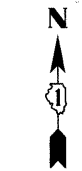
F.A.U. RTE.	SECTION	COUNTY	TOTAL SHEETS	SHEET NO.
2666	09-00096-00-RS	LAKE	18	1
STA.	TO STA.			
FED. ROAD DIST. NO	ILLINOIS	FED AID PROJECT		
C-91-126-10		ARA-9003(507)		
CONTRACT NO. 63367				



PROJECT NO. ARA-9003(507)
F.A.U. ROUTE 2666
MAIN STREET
END RESURFACING
STA. 133 + 42

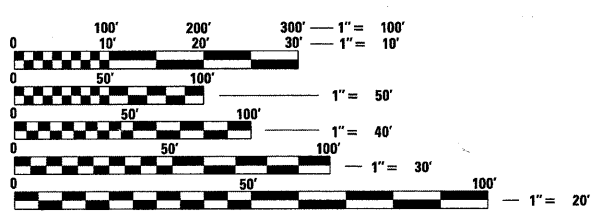


PROJECT NO. ARA-9003(507)
F.A.U. ROUTE 2666
MAIN STREET
END OMISSION/
BEGIN RESURFACING
STA. 104 + 57



COPYRIGHT 2009, BY BAXTER & WOODMAN, INC.
STATE OF ILLINOIS - PROFESSIONAL DESIGN FIRM
LICENSE NO. - 184-001121 - EXPIRES 4/30/2011

TRAFFIC DATA
MAIN STREET
POSTED & DESIGN SPEED LIMIT = 30 MPH
2009 ADT = 3,500
COLLECTOR



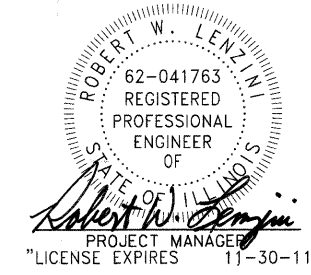
FULL SIZE PLANS HAVE BEEN PREPARED USING STANDARD ENGINEERING SCALES. REDUCED SIZED PLANS WILL NOT CONFORM TO STANDARD SCALES. IN MAKING MEASUREMENTS ON REDUCED PLANS, THE ABOVE SCALES MAY BE USED.

J.U.L.I.E. DESIGN STAGE REQUEST
DIG. No. A2241909



CONTACT JULIE AT 811 OR 800-892-0123
WITH THE FOLLOWING:
COUNTY = LAKE
CITY-TWNSHP. = BUFFALO GROVE - VERNON
SEC. & 1/4 SEC. NO. = SW16, NW21
48 HOURS (2 working days) BEFORE YOU DIG

R11E
VERNON TOWNSHIP
GROSS LENGTH OF IMPROVEMENT = 3,312 LF OR 0.63 MILES
NET LENGTH OF IMPROVEMENT = 2,885 LF OR 0.55 MILES



PROJECT NO. ARA-9003(507)
F.A.U. ROUTE 2666
MAIN STREET
BEGIN OMISSION
STA. 100 + 30

STATE OF ILLINOIS
DEPARTMENT OF TRANSPORTATION
DIVISION OF HIGHWAYS

APPROVED *Muller*
OCTOBER 19, 2009
VILLAGE OF BUFFALO GROVE REPRESENTATIVE

PASSED *Chesnut*
MAY 27 2010
DISTRICT 4 ENGINEER OF LOCAL ROADS AND STREETS

RELEASING FOR BID
BASED ON LIMITED
REVIEW
MAY 27, 2010
Debra M. O'Keefe
DEPUTY DIRECTOR OF HIGHWAYS, REGION 1 ENGINEER

PRINTED BY THE AUTHORITY
OF THE STATE OF ILLINOIS

CONTRACT NO. 63367

Burlington, Wisconsin	Chicago, Illinois	Crystal Lake, Illinois	DeKalb, Illinois	Grayslake, Illinois	Itasca, Illinois	Madison, Wisconsin	Mokena, Illinois	Plainfield, Illinois
262.763.7834	312.578.0050	815.459.1260	815.787.3111	847.223.5088	630.773.1870	608.347.1542	708.478.2090	815.609.7425

(OFFICE WHICH PREPARED PLANS)

B&W PROJECT NO.: 090803 DATE: 10-09-09

COPYRIGHT © 2009 BY BAXTER & WOODMAN, INC.
STATE OF ILLINOIS - PROFESSIONAL DESIGN FIRM
LICENSE NO. 184-001121 EXPIRES 4/30/2011
BUREAU OF LOCAL ROADS AND STREETS, ASSOCIATE FIELD ENGINEER KEVIN STALLWORTH, P.E., (847) 705-4169 SCHAUMBURG, IL