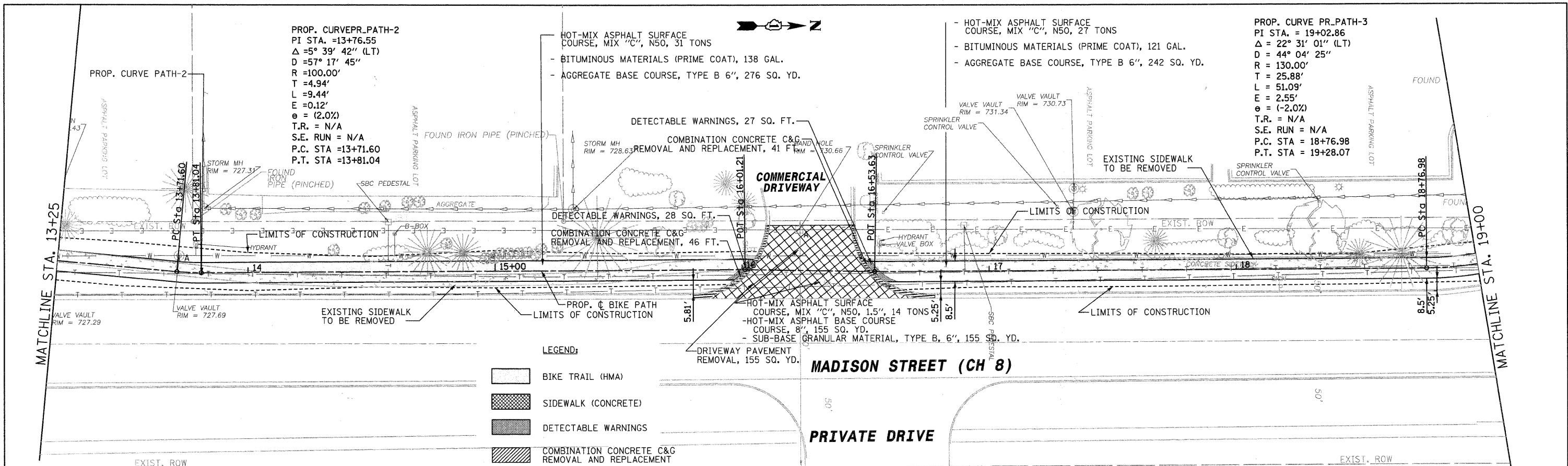


PLAN	SURVEYED	DATE
	ALIGNED	BY
	CHECKED	
	RT. OF WAY CHECKED	
	NO. OF WAY CHECKED	
	NO. OF FILE NAME	

PROFILE	SURVEYED	DATE
	GRADES CHECKED	BY
	B.M. NOTED	
	STRUCTURE NOTATIONS CHFD	
	NO. OF WAY CHECKED	
	NO. OF FILE NAME	

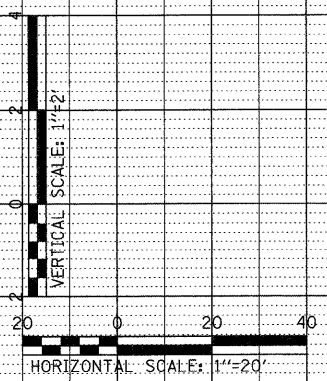
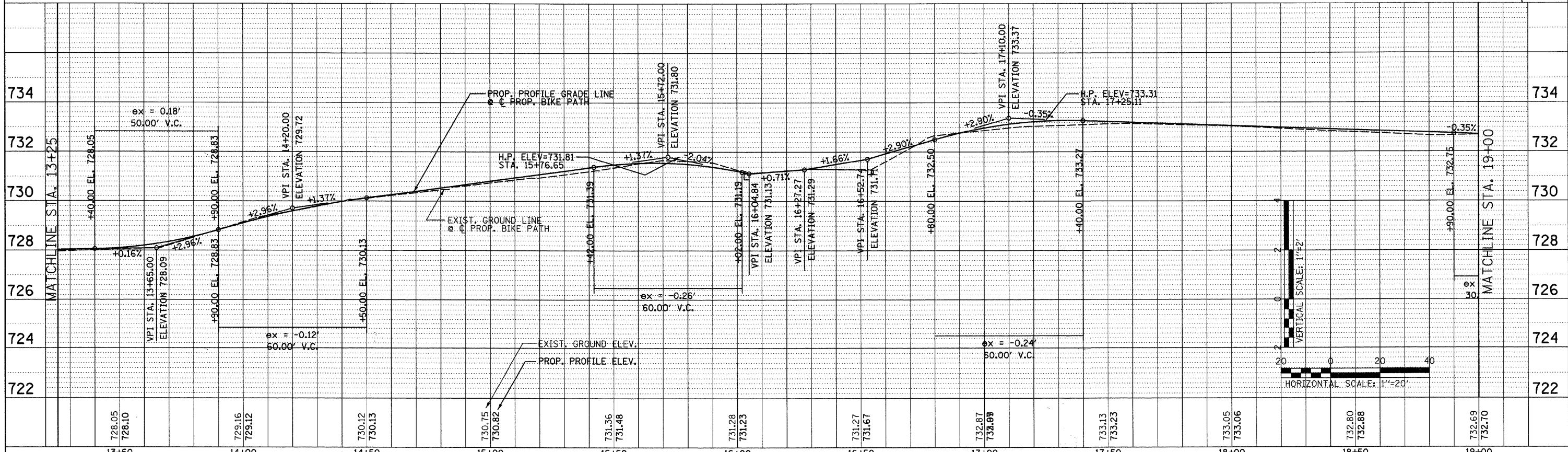
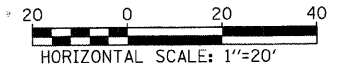


PROP. CURVE PR_PATH-2
 PI STA. = 13+76.55
 $\Delta = 5^\circ 39' 42''$ (LT)
 $D = 57' 17' 45''$
 $R = 100.00'$
 $T = 4.94'$
 $L = 9.44'$
 $E = 0.12'$
 $e = (2.0\%)$
 $T.R. = N/A$
 $S.E. RUN = N/A$
 $P.C. STA = 13+71.60$
 $P.T. STA = 13+81.04$

PROP. CURVE PR_PATH-3
 PI STA. = 19+02.86
 $\Delta = 22^\circ 31' 01''$ (LT)
 $D = 44^\circ 04' 25''$
 $R = 130.00'$
 $T = 25.88'$
 $L = 51.09'$
 $E = 2.55'$
 $e = (-2.0\%)$
 $T.R. = N/A$
 $S.E. RUN = N/A$
 $P.C. STA = 18+76.98$
 $P.T. STA = 19+28.07$

- LEGEND:**
- BIKE TRAIL (HMA)
 - SIDEWALK (CONCRETE)
 - DETECTABLE WARNINGS
 - COMBINATION CONCRETE C&G REMOVAL AND REPLACEMENT
 - STRUCTURE TO BE ADJUSTED

NOTE:
 ALL EXISTING SIDEWALK THROUGHOUT THE PROPOSED BIKE PATH SHALL BE REMOVED. WORK PAID FOR AS SIDEWALK REMOVAL.
 ALL EXISTING PAVEMENT MARKING THAT CONFLICTS WITH PROPOSED PAVEMENT MARKING SHALL BE REMOVED. WORK PAID FOR AS PAVEMENT MARKING REMOVAL.



FILE NAME =	USER NAME = #USER#	DESIGNED - CRC	REVISED -	STATE OF ILLINOIS DEPARTMENT OF TRANSPORTATION	MADISON STREET (CH 8) BIKE PATH IMPROVEMENTS EXISTING AND PROPOSED PLAN			F.A.U. RTE. 2674	SECTION 07-00001-10-BT	COUNTY	TOTAL SHEETS 24	SHEET NO. 7
#FILE#	PLOT SCALE = #SCALE#	DRAWN - ML	REVISED -		SCALE: 1" = 20'	SHEET NO. 2 OF 3 SHEETS	STA. 13+25 TO STA. 19+00	FED. ROAD DIST. NO.	ILLINOIS FED. AID PROJECT	DUPAGE	CONTRACT NO: 63470	
	PLOT DATE = #DATE#	CHECKED - MPK	REVISED -									
		DATE - 03/12/2010	REVISED -									