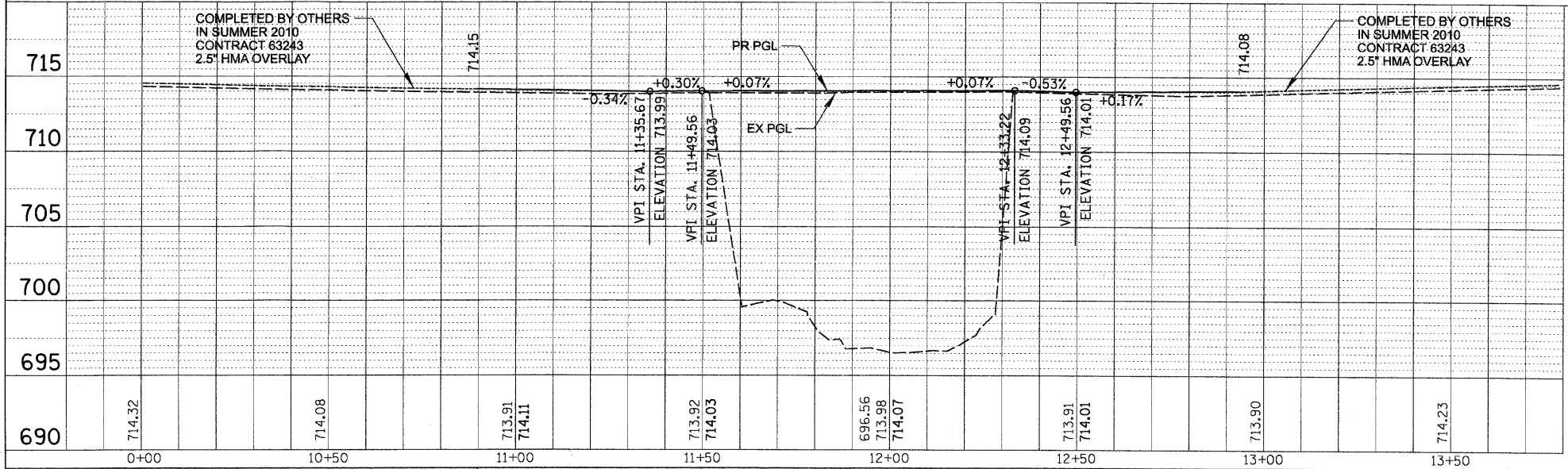
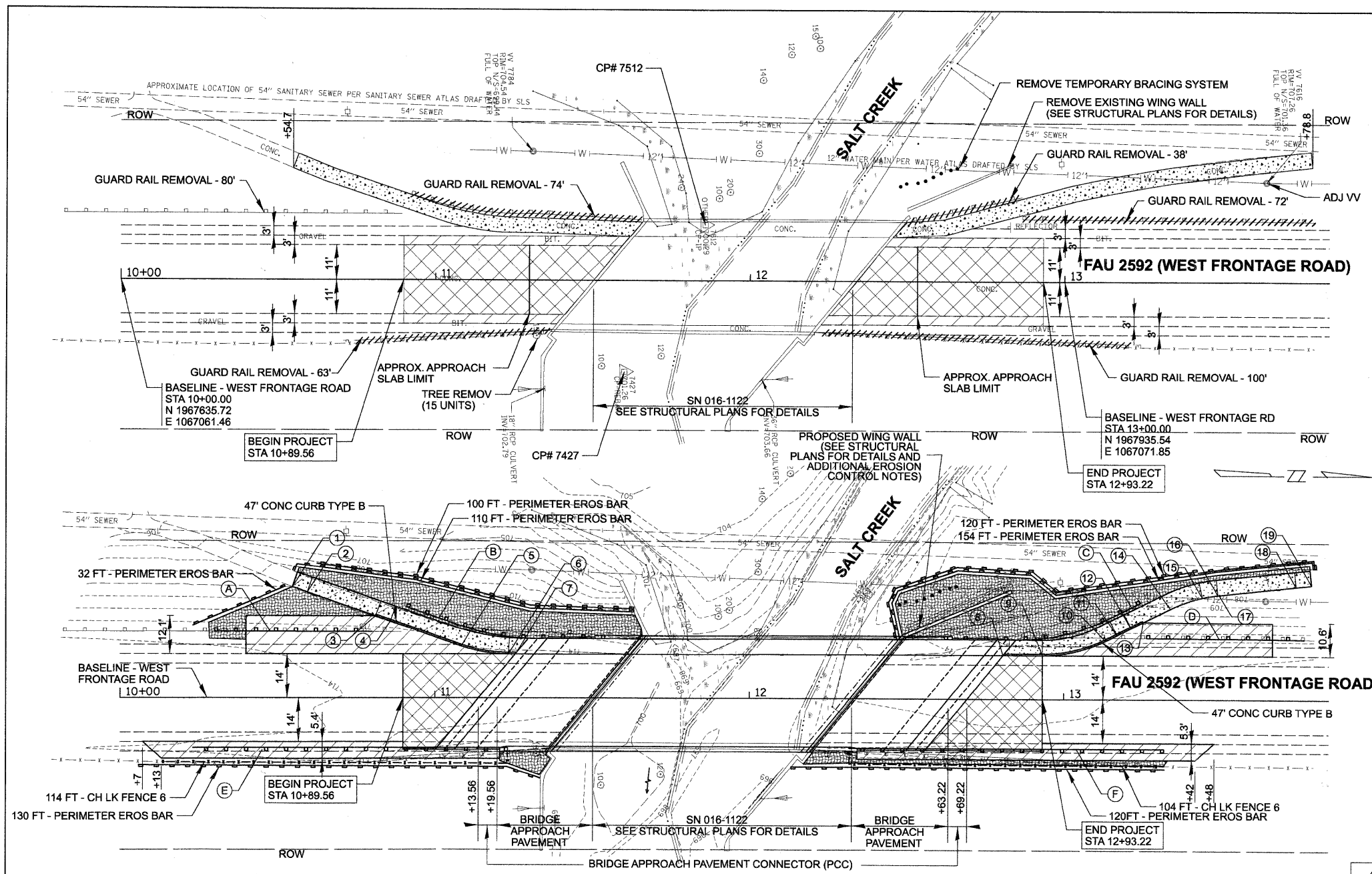


PLAN	BY	DATE
SURVEYED		
ALIGNED		
CHECKED		
NOTE BOOK		
PI. OF WAY CHECKED		
NO.		
NO.		
NO.		

PROFILE	BY	DATE
SURVEYED		
GRADES CHECKED		
NOTE BOOK		
NO.		
NO.		
NO.		

CHRISTOPHER B. BURKE ENGINEERING, LTD.
 9675 W. Higgins Road, Suite 600
 Rosemont, Illinois 60018
 (847) 823-0500



LEGEND

- PAVEMENT REMOVAL / APPROACH SLAB REMOVAL
PC CONC PVMT, 11.5"
- PAVED SHOULDER REMOVAL
AGGREGATE SHLDS A 6
- SIDEWALK REMOVAL
- PC CONC SIDEWALK 5
ON AGG BASE COURSE TY A 2"
- LANDSCAPE RESTORATION

STEEL PLATE BEAM GUARDRAIL AND TRAFFIC BARRIER TERMINALS

LOCATION	STA	OFFSET
A	END, CONNECTING TO EXISTING SPBGR	10+80.0 21.1' LT
	BEGIN TRAFFIC BARRIER TERMINAL, TYPE 1, (SPECIAL) TANGENT	10+30.0 21.1' LT
B	BEGIN TRAFFIC BARRIER TERMINAL, TYPE 6	11+54.0 19.0' LT
	BEGIN 75' RADIUS	11+37.3 19.0' LT
	END 75' RADIUS	11+07.5 23.2' LT
	END TRAFFIC BARRIER TERMINAL, TYPE 2	10+81.0 29.0' LT
C	BEGIN TRAFFIC BARRIER TERMINAL, TYPE 6	12+62.1 19.0' LT
	BEGIN 65' RADIUS	12+85.6 19.0' LT
	END 65' RADIUS	13+14.9 26.0' LT
	END TRAFFIC BARRIER TERMINAL, TYPE 2	13+24.4 30.9' LT
D	BEGIN TRAFFIC BARRIER TERMINAL, TYPE 1, (SPECIAL) TANGENT	13+26.4 19.8' LT
	END, CONNECTING TO EXISTING SPBGR	13+76.4 19.3' LT
E	BEGIN TRAFFIC BARRIER TERMINAL, TYPE 1, (SPECIAL) TANGENT	10+23.2 15.8' RT
	END TRAFFIC BARRIER TERMINAL, TYPE 6	11+23.2 15.8' RT
F	BEGIN TRAFFIC BARRIER TERMINAL, TYPE 6	12+31.8 15.8' RT
	END TRAFFIC BARRIER TERMINAL, TYPE 1, (SPECIAL) TANGENT	13+31.8 15.8' RT

NOTES:
 1. CONTRACTOR SHALL TIE INTO THE EXISTING GUARDRAIL AT AN EXISTING GUARD RAIL POST. POST SPACING SHALL NOT EXCEED THE DISTANCE SHOWN ON THE HIGHWAY STANDARD.
 2. CONTRACTOR SHALL BEND GUARDRAIL TO THE RADIUS SHOWN ON THE PLANS AND PROVIDE EXTRA POSTS AS REQUIRED. THIS WORK SHALL BE CONSIDERED INCLUDED IN THE CONTRACT UNIT PRICE FOR THE TRAFFIC BARRIER TERMINAL OF THE TYPE SPECIFIED.
 3. ALL TRAFFIC BARRIER TERMINAL POSTS SHALL BE 9 FOOT POSTS.

PORTLAND CEMENT CONCRETE SIDEWALK 5 INCH

LOCATION	NOTES	STATION (AT INSIDE FACE OF CURB OR SIDEWALK)	OFFSET (AT INSIDE FACE OF CURB OR SIDEWALK)	AGGREGATE SHOULDER ELEV.	TOP OF CURB ELEV	SIDEWALK ELEV
1	-	10+54.7	35.3' LT	N/A	N/A	MATCH EX
2	-	10+59.4	33.7' LT	N/A	N/A	710.10
3	-	10+81.1	26.1' LT	712.10	712.10	712.10
4	-	10+85.8	24.4' LT	712.20	712.80	712.20
5	BEGIN 45.5' RADIUS	11+08.4	16.6' LT	713.40	713.90	713.40
6	END 45.5' RADIUS	11+23.4	14.0' LT	713.67	714.16	714.16
7	-	11+25.0	14.0' LT	NA	714.18	714.18
8	-	12+80.7	14.0' LT	NA	714.11	714.11
9	BEGIN 45' RADIUS	12+93.2	14.0' LT	713.57	714.07	714.07
10	END 45' RADIUS	13+13.3	18.7' LT	712.34	712.84	712.34
11	-	13+16.9	20.5' LT	711.99	712.49	711.99
12	-	13+21.4	22.7' LT	711.89	712.39	711.89
13	-	13+25.2	24.6' LT	711.53	711.53	711.53
14	BEGIN 45' RADIUS	13+33.9	28.9' LT	N/A	N/A	710.37
15	-	13+44.0	32.5' LT	N/A	N/A	709.81
16	-	13+49.0	33.4' LT	N/A	N/A	709.71
17	END 45' RADIUS	13+49.4	33.4' LT	N/A	N/A	709.66
18	-	13+73.8	36.0' LT	N/A	N/A	706.60
19	-	13+78.8	36.5' LT	N/A	N/A	MATCH EX

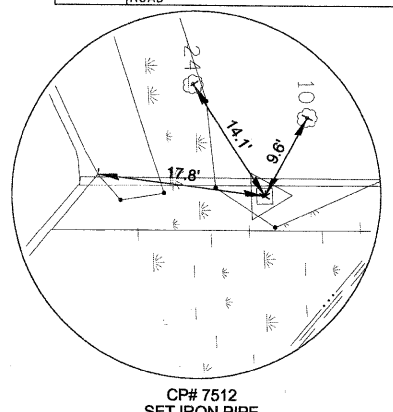
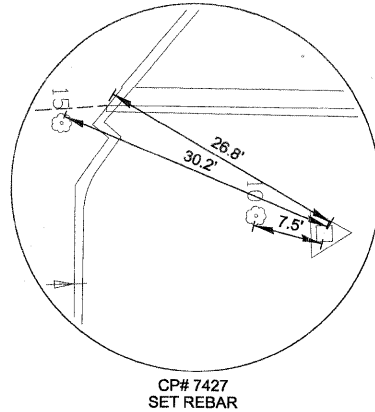
INSTALL EXPANSION JOINTS AT LOCATION 4 AND 12

CONTROL POINTS
 DATUM: NAD '83 ('97) ROLLING MEADOWS CITY DATUM

NO.	STATION	OFFSET	NORTHING	EASTING
CP# 7000	21+96.49	16.78 RT	1967801.53	1067401.20
CP# 7427	11+60.06	29.42 RT	1967794.67	1067096.40
CP# 7512	11+85.69	17.72 LT	1967821.91	1067050.18

ELEVATION BENCHMARKS
 DATUM: NGVD 1929

NO.	DESCRIPTION	ELEV.
RM-184-4	SQUARE CUT ON TOP OF SOUTHWEST HEADWALL OF WEST FRONTAGE ROAD BRIDGE OVER SALT CREEK	714.49
RM-184-5	SQUARE CUT ON SOUTHEAST CORNER OF EAST HEADWALL OF FRONTAGE ROAD BRIDGE ±500' NORTH OF CENTRAL ROAD	714.29
OSBM 1	BOLT ON FIRE HYDRANT ±180' SOUTH OF SALT CREEK ON EAST SIDE OF FRONTAGE ROAD	714.52



FILE NAME =	USER NAME = JBARNETT	DESIGNED = RCB	REVISED =
N:\ROLLINGMEADOWS\98361BR86\Cv1\PLN_98361BR86_01.SHT		DRAWN = PMM	REVISED =
PLOT SCALE = 20'		CHECKED = JGS	REVISED =
PLOT DATE = 5/26/2010		DATE = 5/10/2010	REVISED =

**STATE OF ILLINOIS
 DEPARTMENT OF TRANSPORTATION**

**FAU 2592 (WEST FRONTAGE ROAD)
 EXISTING AND PROPOSED CONDITIONS**

SCALE: 20 SHEET NO. OF SHEETS STA. TO STA.

F.A.U. R.T.L. 2592 & 2594	SECTION 04-00091-00-BR	COUNTY COOK	TOTAL SHEETS 50	SHEET NO. 6
CONTRACT NO. 63471				
FED. ROAD DIST. NO. 1 ILLINOIS FED. AID PROJECT				