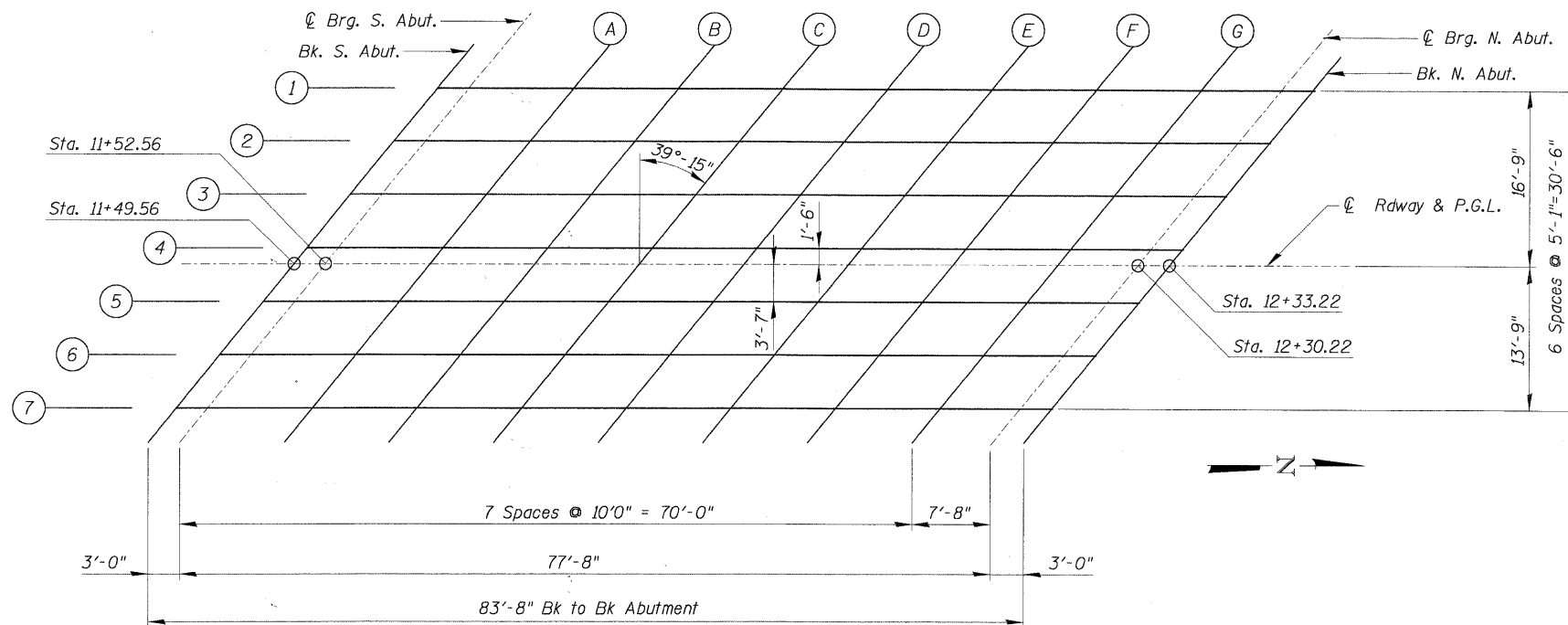
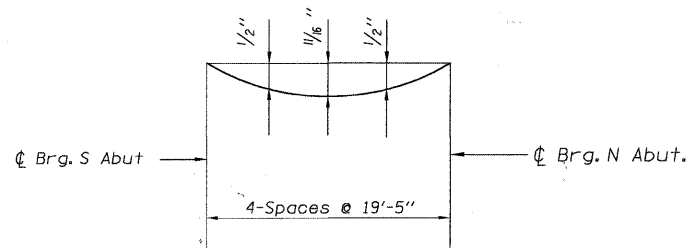


STATE OF ILLINOIS  
DEPARTMENT OF TRANSPORTATION



PLAN



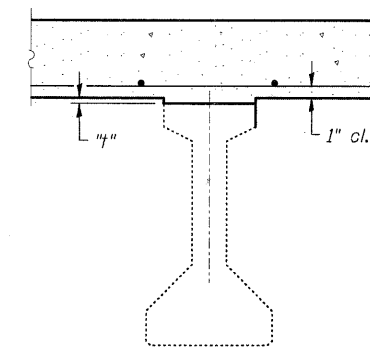
DEAD LOAD DEFLECTION DIAGRAM

(Includes Weight of Concrete Deck And All Superimposed Dead Load Except Future Wearing Surfaces)

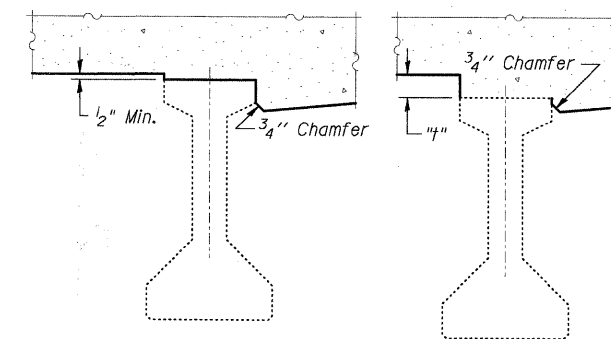
NOTE:

- The deflections given above are not to be used in the field if the Engineer is working from the grade elevations adjusted for dead load deflection as shown on Sheet S-4.
- Offsets Are Positive East Of The Profile Gradeline.

DESIGNED -	200
CHECKED -	EXAMINED
DRAWN -	PASSED
CHECKED -	ENGINEER OF BRIDGES AND STRUCTURES



INTERIOR BEAMS



At Minimum Fillet At Maximum Fillet

EXTERIOR BEAMS

METHOD OF DETERMINING FILLET HEIGHTS "4"

To determine "4": After the existing deck has been removed and prior to placing the proposed deck, elevations of the top flanges of the beams shall be taken at the intervals shown above. These elevations subtracted from the "Theoretical Grade Elevations Adjusted for Dead Load Deflection" shown on Drawing No. S-4 minus slab thickness, equals the fillet heights "4" above top flange of beams.

(Sheet 1 of 2)  
TOP OF DECK ELEVATIONS  
IL RTE 53 W. FRONTAGE ROAD  
OVER SALT CREEK  
F.A.U. ROUTE 2592  
SEC. 04-00091-00-BR  
COOK COUNTY  
STATION 11+91.39  
STRUCTURE NO. 016-1122

SHEET NO. S-3 SHEETS	F.A.U. RTE.	SECTION	COUNTY	TOTAL SHEETS	SHEET NO.
	2592	04-00091-00-BR	COOK	50	27
FED. ROAD DIST. NO.		ILLINOIS	FED. AID PROJECT		
CONTRACT NO. 63471					