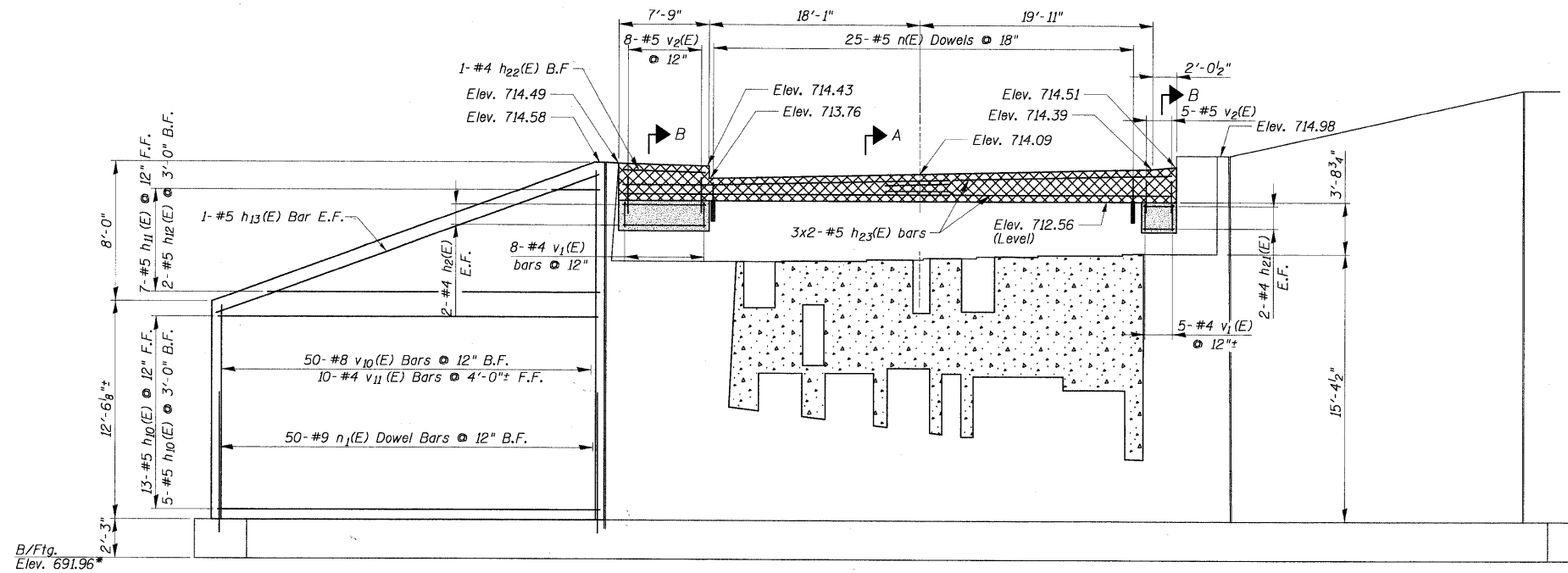


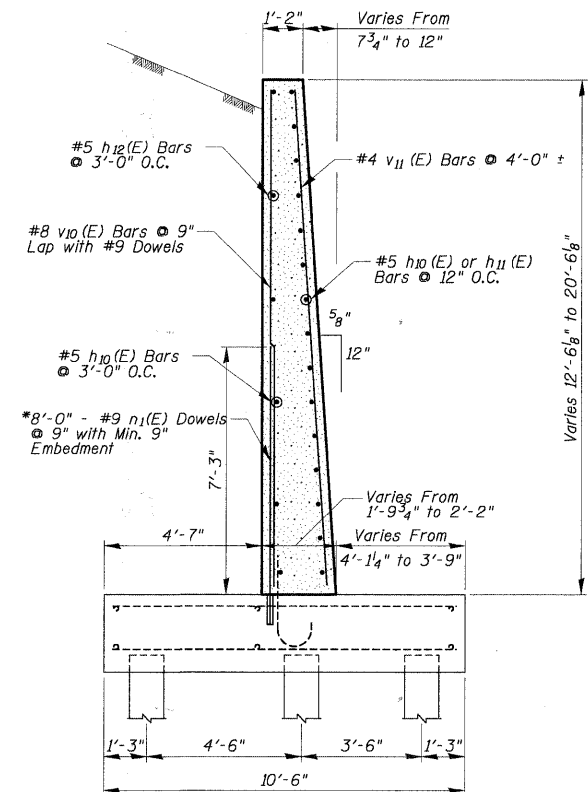
STATE OF ILLINOIS
DEPARTMENT OF TRANSPORTATION

- NOTES:**
- See Sheet S-16 For Notes.
 - See Sheet S-16 For Retaining Wall Wall Drainage Details.



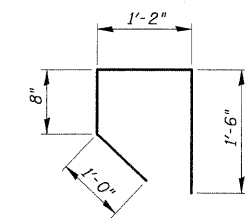
ELEVATION

* Bottom of Footing Elevations and Dimensions are from Original Design Plans



SECTION C-C

* Dowel Bars Shall Be Installed With Hilti HIT RE500 Epoxy Grout, Or An Approved Equal, To Fully Develop Yield Strength Of Rebar.



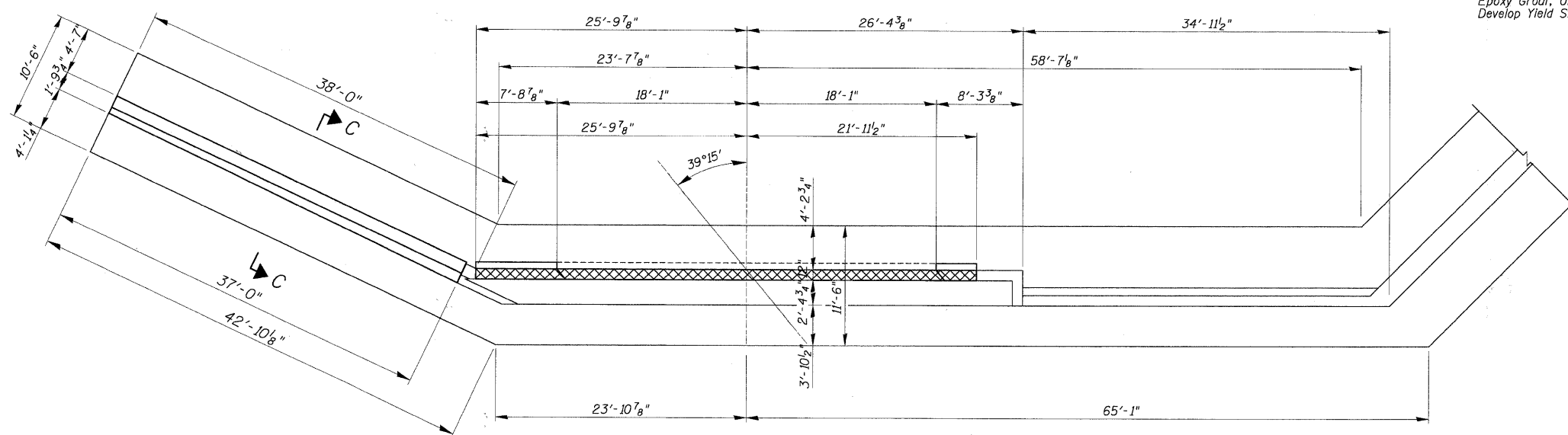
BAR v1(E)

**NORTH ABUTMENT
BILL OF MATERIAL**

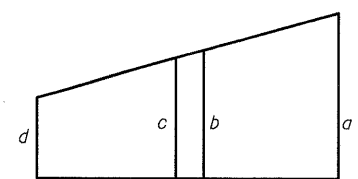
Bar	No.	Size	Length	Shape
h10(E)	18	#5	36'-8"	—
h11(E)	4	#5	32'-1"	—
h12(E)	1	#5	32'-3"	—
h13(E)	2	#5	37'-6"	—
h21(E)	4	#4	1'-9"	—
h22(E)	5	#4	7'-6"	—
h23(E)	6	#5	25'-0"	—
n(E)	25	#5	1'-6"	—
n1(E)	50	#9	8'-0"	—
v1(E)	13	#4	4'-4"	U
v2(E)	13	#5	1'-9"	—
v10(E)	25	#8	32'-8"	—
v11(E)	5	#5	32'-8"	—
Reinforcement Bars, Epoxy Coated		Pound	4,870	
Concrete Structure		Cu. Yds.	40.0	
Drill and Grout Bars		Each	75	

Bars indicated thus 1 x 3 - #8 etc. indicates 1 line of bars with 3 lengths per line.

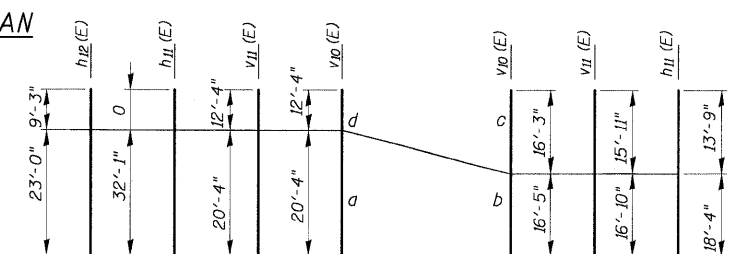
NORTH ABUTMENT PLAN & ELEVATION
IL RTE 53 W. FRONTAGE ROAD
OVER SALT CREEK
F.A.U. ROUTE 2592
SEC. 04-00091-00-BR
COOK COUNTY
STATION 11+91.39
STRUCTURE NO. 016-1122



PLAN



PLACEMENT DIAGRAM



FIELD CUTTING DIAGRAM

LEGEND:

- Concrete Repair
- New Concrete
- To Be Poured After Deck Slab Forms Have Been Removed

DESIGNED -	200
CHECKED -	EXAMINED
DRAWN -	PASSED
CHECKED -	ENGINEER OF BRIDGE DESIGN
	ENGINEER OF BRIDGES AND STRUCTURES

SHEET NO. S-14 SHEETS	F.A.U. RTE.	SECTION	COUNTY	TOTAL SHEETS	SHEET NO.
	2592	04-00091-00-BR	COOK	50	38
CONTRACT NO. 63471					
FED. ROAD DIST. NO.		ILLINOIS	FED. AID PROJECT		