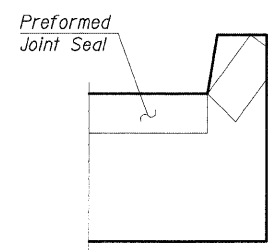
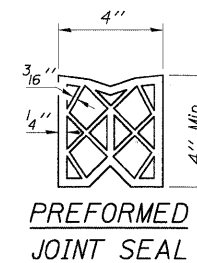
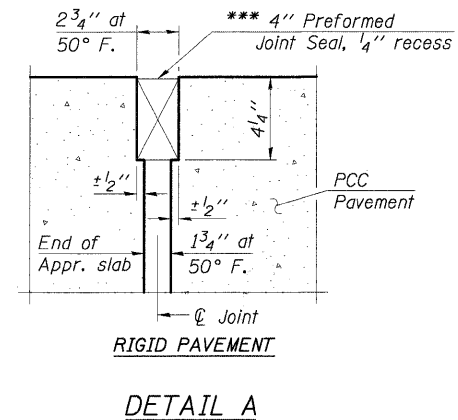


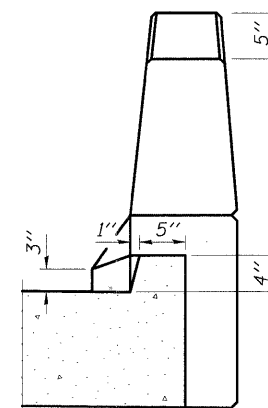
STATE OF ILLINOIS
DEPARTMENT OF TRANSPORTATION

Notes:
See sheet S-18 for Sections C-C & D-D.
 $a_{10}(E)$, $a_{11}(E)$, $a_{12}(E)$, $a_{13}(E)$ and $w(E)$ bar spacings measured perpendicular to ϕ Rdwy.

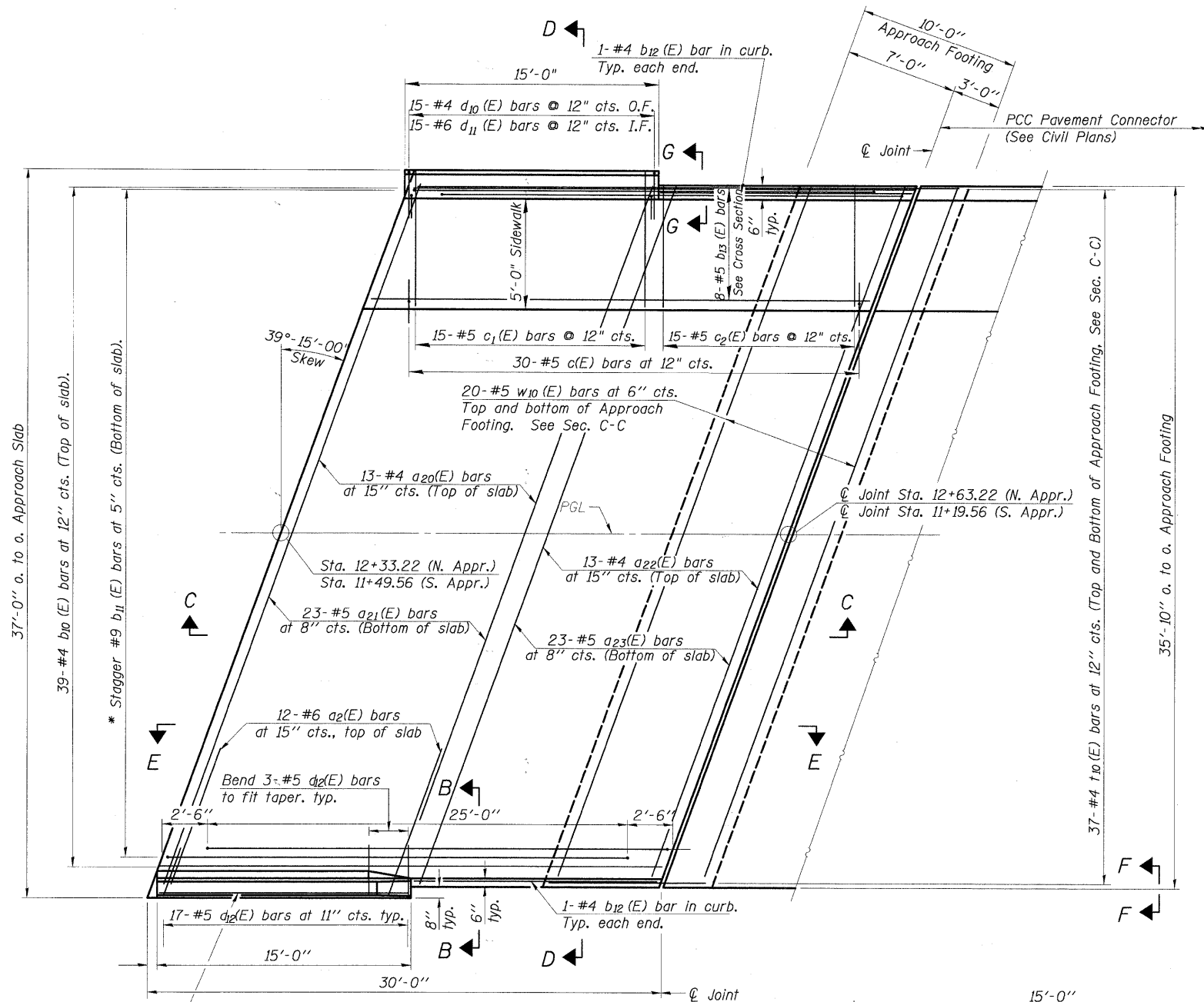
*** Cost included with Concrete Superstructure.



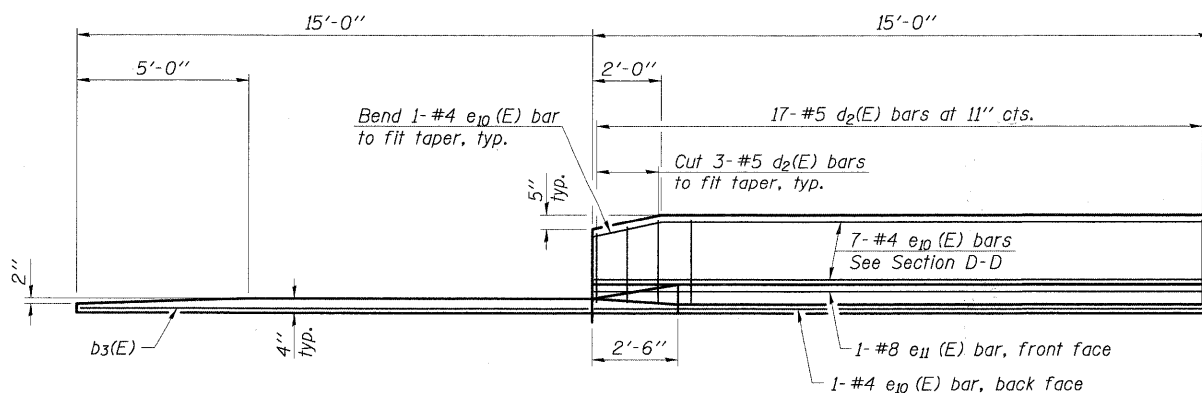
Angle Preformed Joint Seal at 45°
at curbs when req'd for drainage.



VIEW G-G



* Tilt #9 $b_1(E)$ bars as required to maintain clearance.



DESIGNED -	200
CHECKED -	EXAMINED
DRAWN -	PASSED
CHECKED -	ENGINEER OF BRIDGE DESIGN
	ENGINEER OF BRIDGES AND STRUCTURES

(Sheet 1 of 2)
BRIDGE APPROACH SLAB DETAILS
IL RTE 53 W. FRONTAGE ROAD
OVER SALT CREEK
F.A.U. ROUTE 2592
SEC. 04-00091-00-BR
COOK COUNTY
STATION 11+91.39
STRUCTURE NO. 016-1122

SHEET NO. S-17 SHEETS	F.A.U. RTE.	SECTION	COUNTY	TOTAL SHEETS	SHEET NO.
	2592	04-00091-00-BR	COOK	50	41
CONTRACT NO. 63471					
FED. ROAD DIST. NO.		ILLINOIS FED. AID PROJECT			