

FOR INDEX OF SHEETS, SEE SHEET NO.2

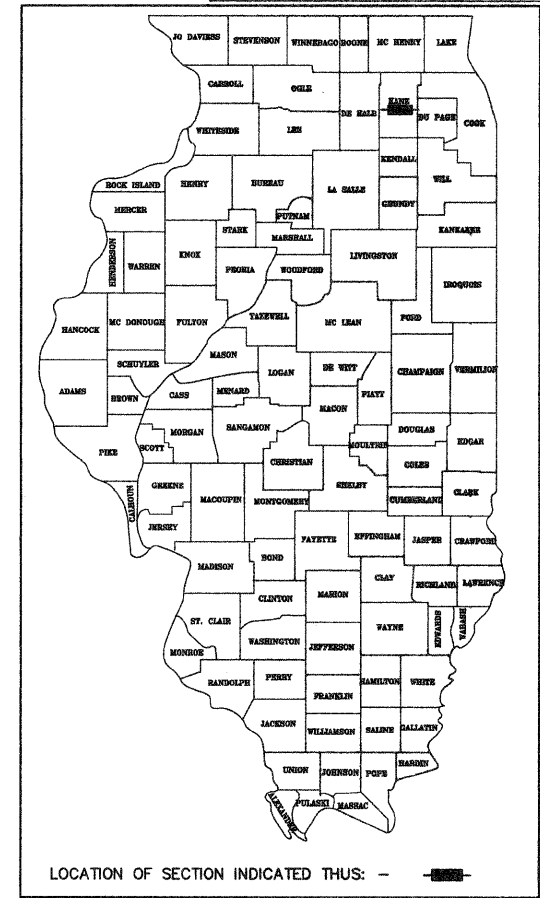
# STATE OF ILLINOIS DEPARTMENT OF TRANSPORTATION DIVISION OF HIGHWAYS PLANS FOR PROPOSED FEDERAL AID PROJECT

F.A.P. RTE.	SECTION	COUNTY	TOTAL SHEETS	SHEET NO.
537	10-00002-00-RS	KANE	13	1
FED. ROAD DIST. NO.		ILLINOIS	FED. AID PROJECT - LAPP	
CONTRACT NO. 63474				

**DESIGN DESIGNATION**

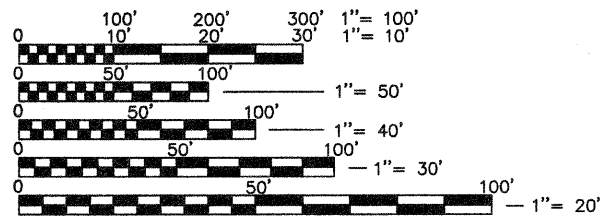
MCDONALD ROAD: OTHER PRINCIPAL ARTERIAL  
DESIGN SPEED = 45 M.P.H.  
POSTED SPEED = 45 M.P.H.  
ADT = 6200 VPD (2009)

**FAP 537 (McDONALD ROAD)  
FROM WEST OF PHAR LAP DRIVE  
TO EAST OF CLOVERFIELD DRIVE  
LAPP RESURFACING  
PROJECT NO. ARA-9003 (646)  
SECTION NO. 10-00002-00-RS  
VILLAGE OF CAMPTON HILLS  
KANE COUNTY  
JOB NO. C-91-554-10**

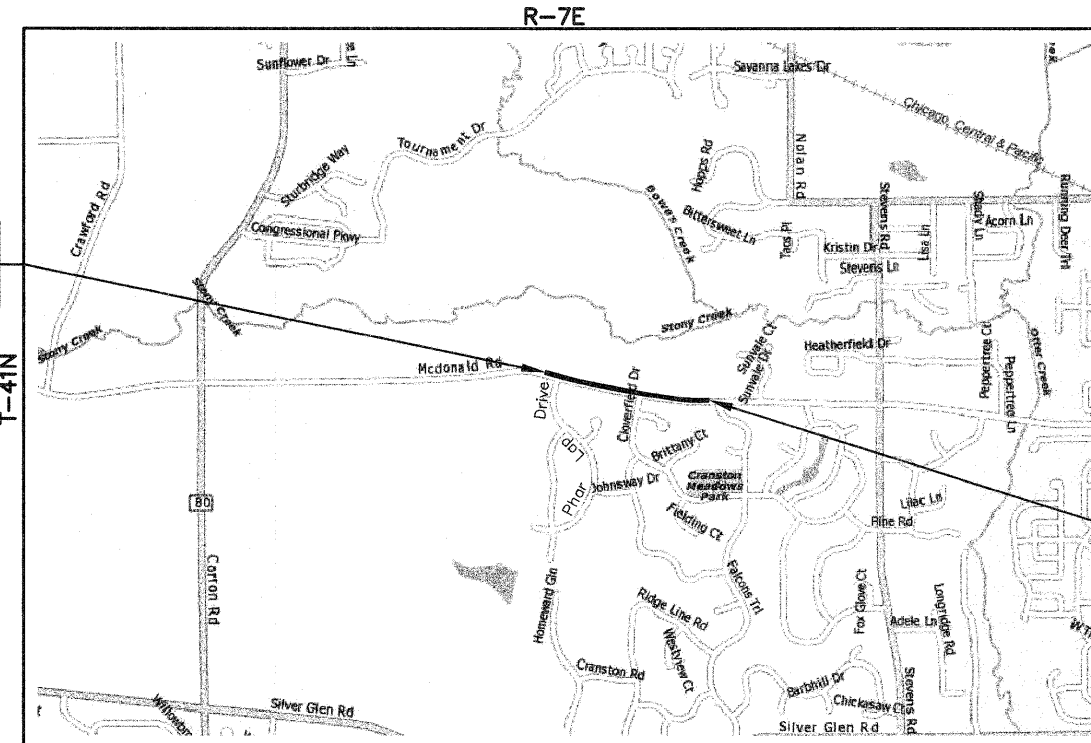


FIELD ENGINEER: MARILYN SOLOMON (847) 705-4407

CONSULTING ENGINEER: ENGINEERING ENTERPRISES, INC.  
CONTACT: JASON BAUER (630)-466-6700



FULL SIZE PLANS HAVE BEEN PREPARED USING STANDARD ENGINEERING SCALES, REDUCED SIZED PLANS WILL NOT CONFORM TO STANDARD SCALES, IN MAKING MEASUREMENTS ON REDUCED PLANS, THE ABOVE SCALES MAY BE USED.



SE 1/4 SEC. 36, T-41N, R-7E, 3RD PM, CAMPTON TOWNSHIP

**LOCATION MAP**  
N.T.S.

GROSS LENGTH OF PROJECT = 2,885 FEET (0.55 MILES)  
NET LENGTH OF PROJECT = 2,885 FEET (0.55 MILES)

STATE OF ILLINOIS DEPARTMENT OF TRANSPORTATION DIVISION OF HIGHWAYS	
APPROVED	<u>October 6, 2010</u> <i>Jason Bauer</i> VILLAGE OF CAMPTON HILLS
PASSED	<u>MAY 27, 2010</u> <i>Chris Chesnut</i> DISTRICT 1 ENGINEER OF LOCAL ROADS & STREETS
RELEASING FOR BID BASED ON LIMITED REVIEW	<u>MAY 27, 2010</u> <i>Diana M. O'Keefe</i> DEPUTY DIRECTOR OF HIGHWAYS, REGION 1 ENGINEER

DATE: <u>4-26-10</u>	
BY: <u>Jason Bauer</u>	
LICENSE EXPIRES: <u>NOVEMBER 30, 2011</u>	

**JULIE JOINT UTILITY**  
LOCATION INFORMATION FOR EXCAVATION  
CALL 811

Know what's below.  
Call before you dig.

CONTRACT 63474

**Engineering Enterprises, Inc.**  
CONSULTING ENGINEERS  
52 Wheeler Road  
Sugar Grove, Illinois 60554  
P: 630.466.6700 - W: www.eeiweb.com

PRINTED BY THE AUTHORITY OF THE STATE OF ILLINOIS

Plotted: April 13, 2010 @ 3:23 PM By: Larry Nelson - Tab: 01 Cover - 22x34  
COPYRIGHT © 2010 ENGINEERING ENTERPRISES, INC.

Path: \\S:\PROJ\100903\DWG\FINAL\_ENG\CH0001-CR