

**STATE OF ILLINOIS
DEPARTMENT OF TRANSPORTATION
DIVISION OF HIGHWAYS**

PLANS FOR PROPOSED FEDERAL AID PROJECT

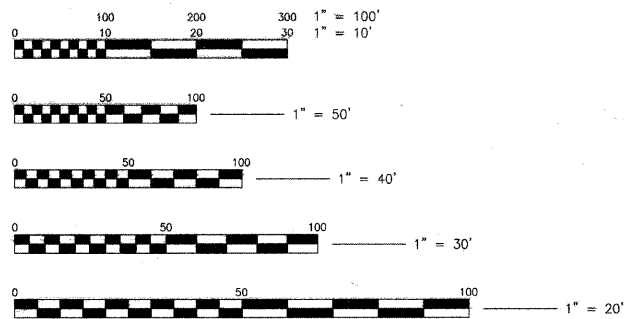
**FAU 2845 (HARWOOD AVENUE -MAPLE ROAD)
FROM DIXIE HIGHWAY (FAU 2843)
TO ASHLAND AVENUE (FAU 2860)
RESURFACING
SECTION : 10-00130-00-RS
PROJECT NO.: ARA - 9003 (652)
VILLAGE OF HOMEWOOD
COOK COUNTY
JOB NO.: C-91-577-10**

INDEX OF SHEETS

SHEET NO.	TITLE
1	COVER SHEET, INDEX & LOCATION MAP
2	SUMMARY OF QUANTITIES
3	GENERAL NOTES
4	EXISTING TYPICAL SECTIONS
5	PROPOSED TYPICAL SECTIONS
6	HARWOOD AVENUE/MAPLE ROAD (FAU ROUTE 2845) EXISTING ROADWAY AND PAVEMENT MARKING PLAN, STA. 0+00 STA. 34+19.88
7	IDOT DISTRICT ONE TYPICAL PAVEMENT MARKING DETAIL
8	IDOT BUTT JOINT & HMA TAPER DETAIL
9	CURB OR GUTTER REMOVAL AND REPLACEMENT
10	TC-10 TRAFFIC CONTROL AND PROTECTION FOR SIDE ROADS, INTERSECTIONS, AND DRIVEWAYS
11	DETAILS FOR FRAMES AND LIDS ADJUSTMENT WITH MILLING
12	PAVEMENT PATCHING FOR HMA SURFACED PAVEMENT

HIGHWAY STANDARDS

STANDARD NO.	TITLE
000001-05	STANDARD SYMBOLS, ABBREVIATIONS AND PATTERNS
424001-05	CURB RAMPS FOR SIDEWALKS
442201-03	CLASS C AND D PATCHES
604001-03	FRAMES AND LIDS, TYPE 1
606001-04	CONCRETE CURB TYPE-B AND COMBINATION CONCRETE CURB & GUTTER
701501-05	URBAN LANE CLOSURE, 2L, 2W UNDIVIDED
701801-04	LANE CLOSURE MULTILANE 1W OR 2W CROSSWALK OR SIDEWALK CLOSURE
701901-01	TRAFFIC CONTROL DEVICES



FULL SIZE PLANS HAVE BEEN PREPARED USING STANDARD ENGINEERING SCALES. REDUCED SIZED PLANS WILL NOT CONFORM TO STANDARD SCALES. IN MAKING MEASUREMENTS ON REDUCED SIZE PLANS, THE ABOVE SCALES SHALL BE USED.

HARWOOD AVE. & MAPLE RD. DESIGN DESIGNATION
POSTED SPEED: 25 MPH
ADT: 2,090 (2009)
URBAN COLLECTOR

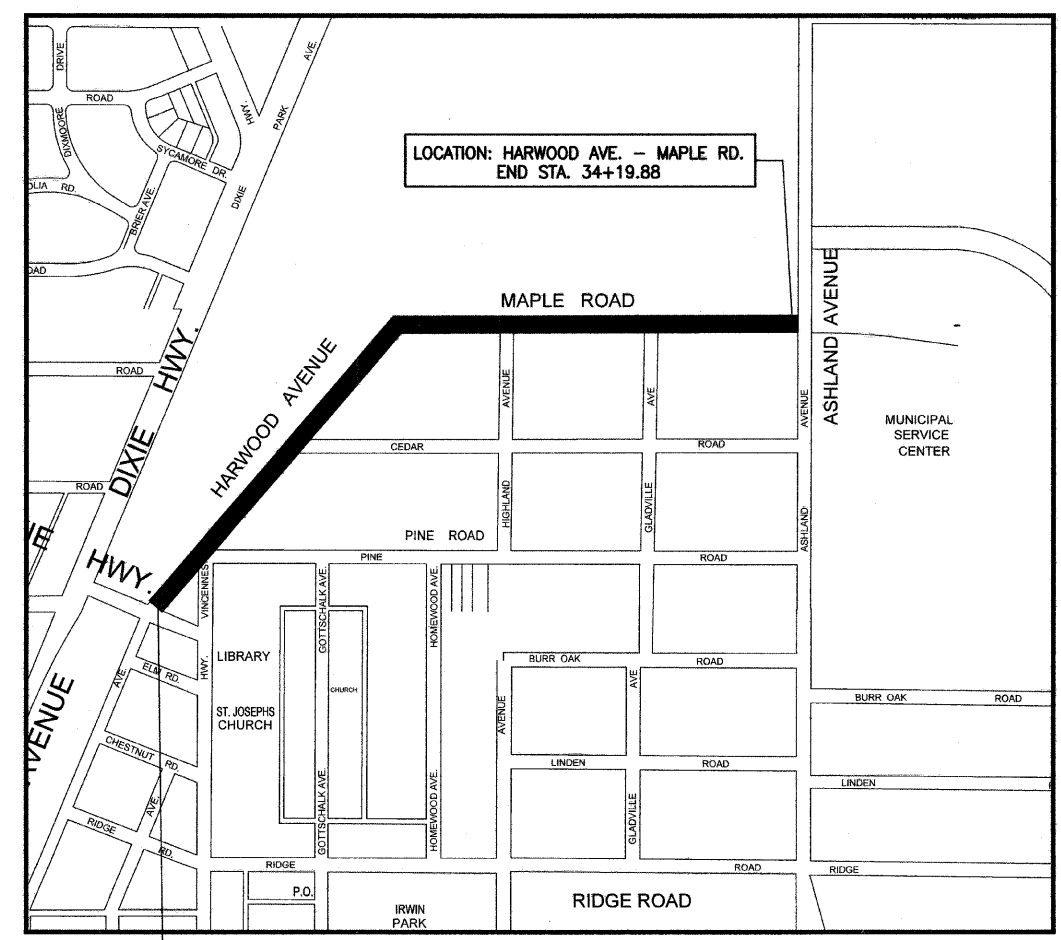
PROJECT IS LOCATED IN THE VILLAGE OF HOMEWOOD



CALL JULIE (800) 892-0123
WITH THE FOLLOWING INFORMATION:
COUNTY = COOK
48 HOURS BEFORE YOU DIG
EXCLUDING SAT., SUN. & HOLIDAYS

FIELD ENGINEER: MEL MANGOBA, (847) 705-4408

CONTRACT NO.: 63479



LOCATION: HARWOOD AVE. - MAPLE RD.
BEGIN STA. 0+00

3RD PRINCIPAL MERIDIAN
LOCATION MAP
NOT TO SCALE

TOTAL NET & GROSS LENGTH OF PROJECT =3,420 LINEAL FEET (0.648 MILES)



T36N



VILLAGE OF HOMEWOOD
Department of Public Works
Engineering Division
1775 S. Ashland Avenue
Homewood, IL 60445
(708) 206-3470



VILLAGE ENGINEER
" LICENSE EXPIRES 11-30-11 " DATE: 5/4/10

STATE OF ILLINOIS DEPARTMENT OF TRANSPORTATION DIVISION OF HIGHWAYS	
APPROVED	2010 <i>[Signature]</i> VILLAGE PRESIDENT
PASSED	May 27, 2010 <i>[Signature]</i> DISTRICT 1 ENGINEER OF LOCAL ROADS & STREETS
RELEASING FOR BID BASED ON LIMITED REVIEW	MAY 27, 2010 <i>[Signature]</i> DEPUTY DIRECTOR OF HIGHWAYS, REGION 1 ENGINEER

PRINTED BY THE AUTHORITY OF
THE STATE OF ILLINOIS