

**STATE OF ILLINOIS  
DEPARTMENT OF TRANSPORTATION  
DIVISION OF HIGHWAYS**

**PLANS FOR PROPOSED  
FEDERAL AID PROJECT**

**FAU 2845 (HARWOOD AVENUE)  
FROM 183rd STREET (FAU 1622) TO SOUTH VILLAGE BOUNDARY  
RESURFACING**

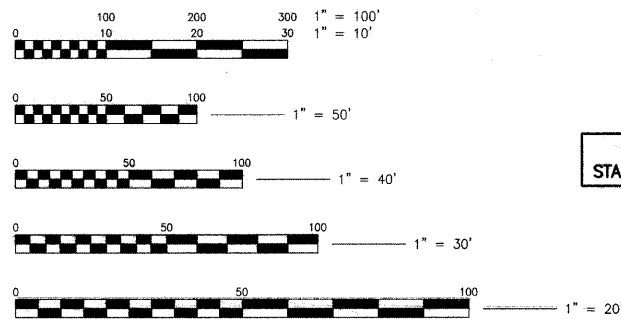
**VILLAGE OF HOMEWOOD  
SECTION : 10-00131-00-RS  
PROJECT NO.: ARA-9003(651)  
COOK COUNTY  
JOB NO.: C-91-576-10**

INDEX OF SHEETS

SHEET NO.	TITLE
1	COVER SHEET, INDEX & LOCATION MAP
2	SUMMARY OF QUANTITIES
3	GENERAL NOTES
4	EXISTING TYPICAL SECTIONS
5	PROPOSED TYPICAL SECTIONS
6	HARWOOD AVENUE/MAPLE ROAD (FAU ROUTE 2845) EXISTING ROADWAY AND PAVEMENT MARKING PLAN, STA. 0+00 STA. 34+19.88
7	IDOT DISTRICT ONE TYPICAL PAVEMENT MARKING DETAIL
8	IDOT BUTT JOINT & HMA TAPER DETAIL
9	CURB OR CURB AND GUTTER REMOVAL AND REPLACEMENT
10	TC-10 TRAFFIC CONTROL AND PROTECTION FOR SIDE ROADS, INTERSECTIONS, AND DRIVEWAYS
11	IDOT DISTRICT ONE DETECTABLE LOOP INSTALLATION DETAILS
12	DETAILS FOR FRAMES AND LIDS ADJUSTMENT WITH MILLING

HIGHWAY STANDARDS

STANDARD NO.	TITLE
000001-05	STANDARD SYMBOLS, ABBREVIATIONS AND PATTERNS
424001-05	CURB RAMPS FOR SIDEWALKS
442201-03	CLASS C AND D PATCHES
604001-03	FRAMES AND LIDS, TYPE 1
606001-04	CONCRETE CURB TYPE-B AND COMBINATION CONCRETE CURB & GUTTER
701501-05	URBAN LANE CLOSURE, 2L, 2W UNDIVIDED
701801-04	LANE CLOSURE MULTILANE 1W OR 2W CROSSWALK OR SIDEWALK CLOSURE
701901-01	TRAFFIC CONTROL DEVICES



FULL SIZE PLANS HAVE BEEN PREPARED USING STANDARD ENGINEERING SCALES. REDUCED SIZED PLANS WILL NOT CONFORM TO STANDARD SCALES. IN MAKING MEASUREMENTS ON REDUCED SIZE PLANS, THE ABOVE SCALES SHALL BE USED.

**HARWOOD AVENUE DESIGN DESIGNATION**  
POSTED SPEED: 25 MPH  
ADT: 6,500 (2009)  
MINOR ARTERIAL

**PROJECT IS LOCATED IN THE VILLAGE OF HOMEWOOD**



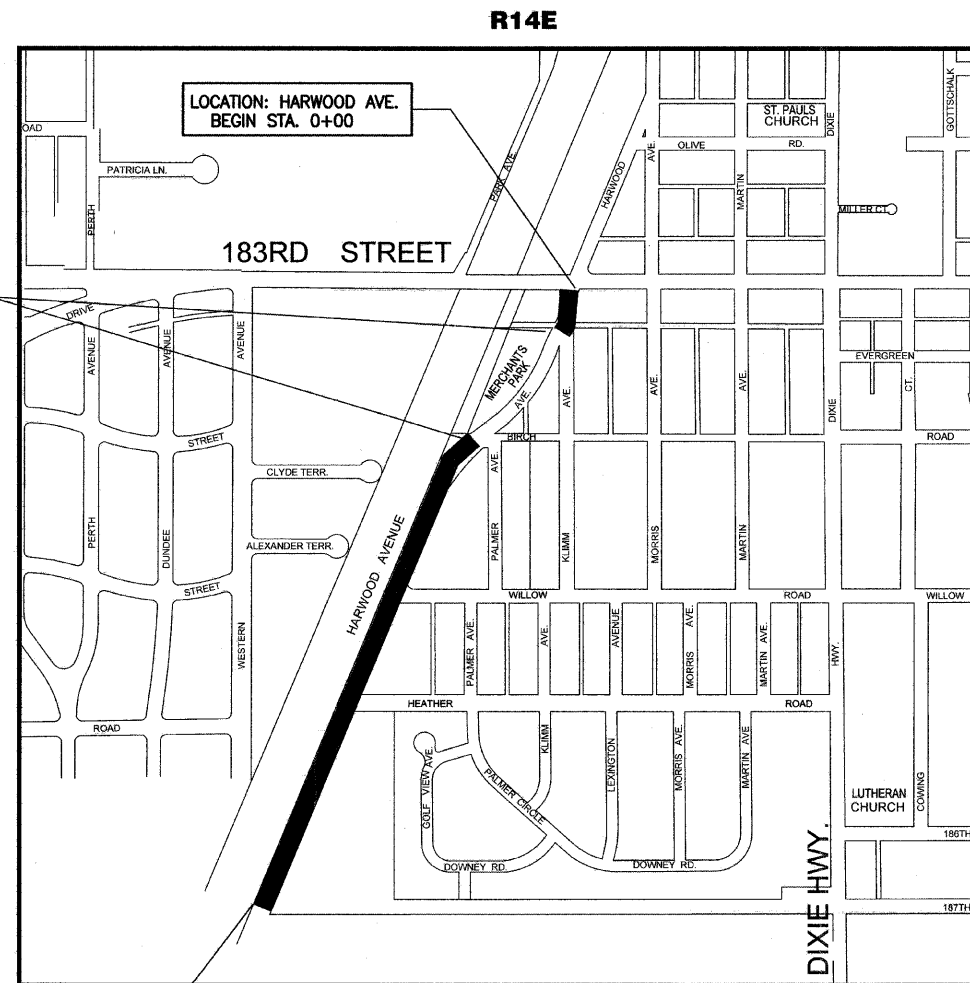
CALL JULIE (800) 892-0123  
WITH THE FOLLOWING INFORMATION:  
COUNTY = COOK  
48 HOURS BEFORE YOU DIG  
EXCLUDING SAT., SUN. & HOLIDAYS

CONTRACT NO.: 63480

FIELD ENGINEER: MEL MANGOBA, (847) 705-4408

PROJECT OMISSION  
STA. 2+41.93 TO 8+19.19

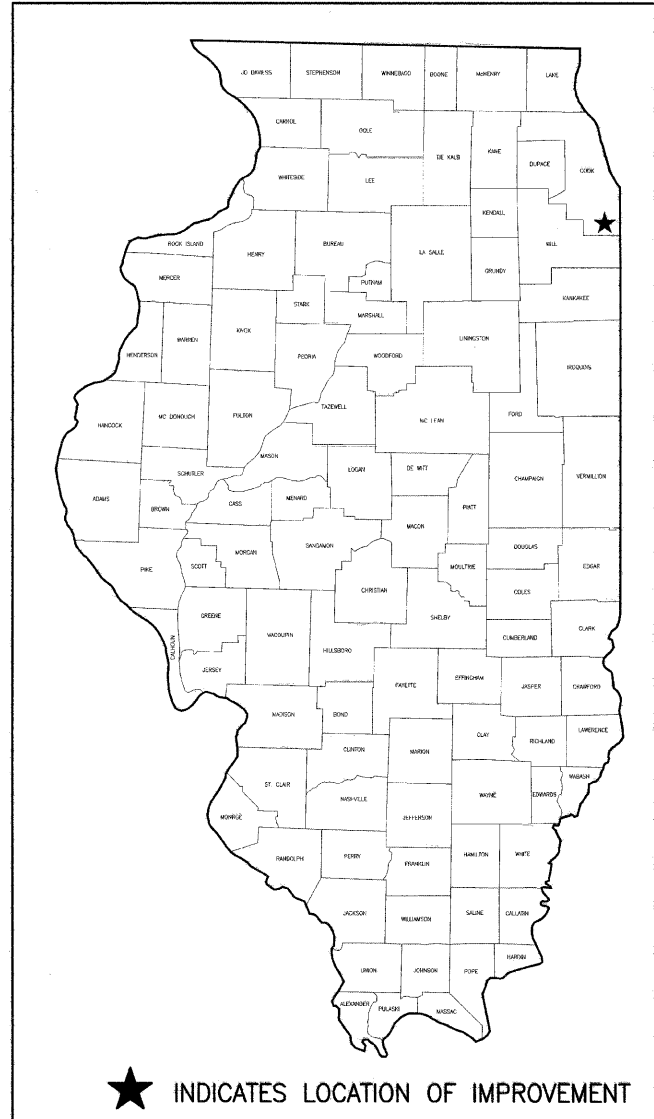
LOCATION: HARWOOD AVE.  
END STA. 30+89.16



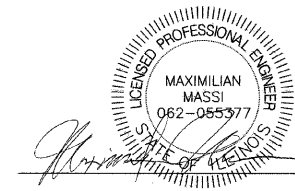
LOCATION MAP  
NOT TO SCALE

**3RD PRINCIPAL MERIDIAN**

GROSS LENGTH OF PROJECT = 3,089 LINEAL FEET (0.585 MILES)  
NET LENGTH OF PROJECT = 2,512 FEET (0.476 MILES)



★ INDICATES LOCATION OF IMPROVEMENT



VILLAGE ENGINEER  
" LICENSE EXPIRES 11-30-11 " DATE: 5/4/10



VILLAGE OF HOMEWOOD  
Department of Public Works  
Engineering Division  
17755 S. Ashland Avenue  
Homewood, IL 60445  
(708) 206-3470

STATE OF ILLINOIS DEPARTMENT OF TRANSPORTATION DIVISION OF HIGHWAYS	
APPROVED	5/4 2010 <i>[Signature]</i> VILLAGE PRESIDENT
PASSED	MAY 27 2010 <i>[Signature]</i> DISTRICT 1 ENGINEER OF LOCAL ROADS & STREETS
RELEASING FOR BID BASED ON LIMITED REVIEW	MAY 27, 2010 <i>[Signature]</i> DEPUTY DIRECTOR OF HIGHWAYS, REGION 1 ENGINEER

PRINTED BY THE AUTHORITY OF  
THE STATE OF ILLINOIS