

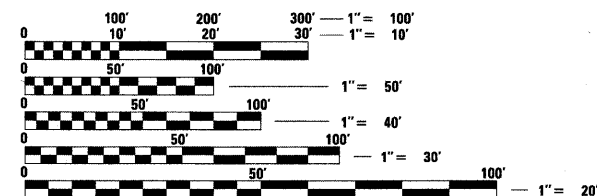
FOR INDEX OF SHEETS, SEE SHEET NO. 2

IDOT STANDARDS

STD. No.	DESCRIPTION
000001-05	STANDARD SYMBOLS, ABBREVIATION AND PATTERNS
001006	DECIMAL OF AN INCH AND A FOOT
424001-05	CURB RAMPS FOR SIDEWALKS
606001-04	CONCRETE CURB TYPE B AND COMBINATION CONCRETE CURB AND GUTTER
701006-03	OFF-RD OPERATIONS, 2L, 2W, 4.5 m (15') TO 600 mm (24") FROM PAVEMENT EDGE
701011-02	OFF-RD MOVING OPERATIONS, 2L, 2W, DAY ONLY
701101-02	OFF-RD OPERATIONS, MULTILANE, 4.5 m (15') TO 600 mm (24") FROM PAVEMENT EDGE
701301-03	LANE CLOSURE, 2L, 2W, SHORT TIME OPERATIONS
701501-05	URBAN LANE CLOSURE, 2L, 2W, UNDIVIDED
701606-06	URBAN LANE CLOSURE, MULTILANE, 2W WITH MOUNTABLE MEDIAN
701701-06	URBAN LANE CLOSURE, MULTILANE INTERSECTION
701801-04	LANE CLOSURE, MULTILANE, 1W OR 2W CROSSWALK OR SIDEWALK CLOSURE
701901-01	TRAFFIC CONTROL DEVICES
720001-01	SIGN PANEL MOUNTING DETAILS
814001-02	HANDHOLES
814006-02	DOUBLE HANDHOLES
857001-01	STANDARDS PHASE DESIGNATION DIAGRAMS AND PHASE SEQUENCES
862001-01	UNINTERRUPTABLE POWER SUPPLY (UPS)
873001-02	TRAFFIC SIGNAL GROUNDING & BONDING
877001-04	STEEL MAST ARM ASSEMBLY AND POLE
878001-08	CONCRETE FOUNDATION DETAILS
880001-01	SPAN WIRE MOUNTED SIGNALS AND BEACON INSTALLATION
880006-01	TRAFFIC SIGNAL MOUNTING DETAILS
886001-01	DETECTOR LOOP INSTALLATION

**TRAFFIC DATA**

ROUTE SEGMENT	SPEED (MPH)	ADT	CLASSIFICATION
GREEN BAY RD FROM LAKE-COOK RD TO BOB-O-LINK RD	35	14,400	MINOR ARTERIAL
GREEN BAY RD FROM BOB-O-LINK RD TO VINE AVE	30	15,100	MINOR ARTERIAL
DEERFIELD RD/CENTRAL AVE FROM RIDGE RD TO SUNSET RD	35	22,700	MINOR ARTERIAL
DEERFIELD RD/CENTRAL AVE FROM SUNSET RD TO GREEN BAY RD	25	16,300	MINOR ARTERIAL
LAKE-COOK ROAD	35	12,600	MINOR ARTERIAL
LAUREL AVENUE	25	11,800	MINOR ARTERIAL
PARK AVENUE WEST	35	12,200	MINOR ARTERIAL
US 41	50	61,100	OTHER PRINCIPAL ARTERIAL



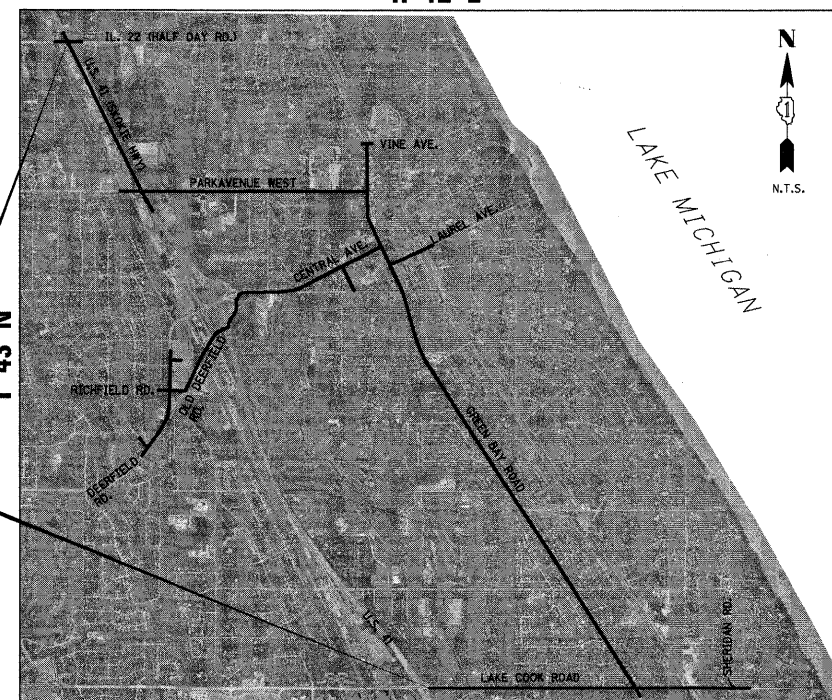
FULL SIZE PLANS HAVE BEEN PREPARED USING STANDARD ENGINEERING SCALES. REDUCED SIZED PLANS WILL NOT CONFORM TO STANDARD SCALES. IN MAKING MEASUREMENTS ON REDUCED PLANS, THE ABOVE SCALES MAY BE USED.

J.U.L.I.E.  
JOINT UTILITY LOCATION INFORMATION FOR EXCAVATION  
1-800-892-0123  
OR 811

**CONTRACT NO. 63485**

STATE OF ILLINOIS  
DEPARTMENT OF TRANSPORTATION  
DIVISION OF HIGHWAYS  
**PLANS FOR PROPOSED  
TRAFFIC SIGNAL INTERCONNECT  
AND MODERNIZATION**  
CONGESTION MITIGATION AIR QUALITY  
LAKE COUNTY PASSAGE  
VARIOUS LOCATIONS  
IN  
HIGHLAND PARK  
FEDERAL PROJECT NO.: CMM-9003 (217)  
SECTION 06-00924-00-TL  
LAKE COUNTY  
JOB NO.: C-91-275-09

R 12 E

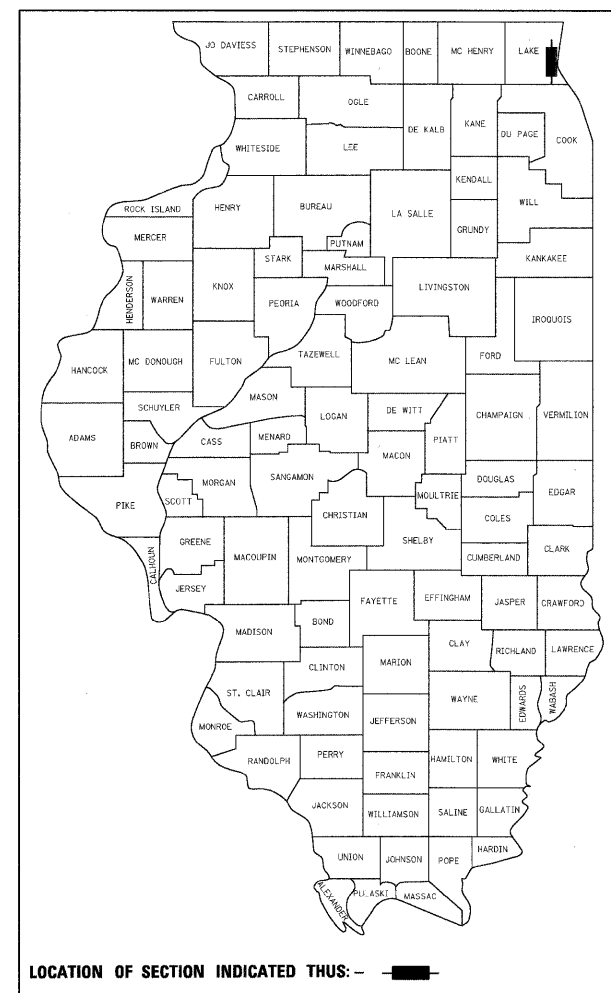


PROJECT ENDS  
U.S. RTE. 41 (SKOKIE HWY)  
AT IL. RTE 22 (HALF DAY RD.)

PROJECT BEGINS  
U.S. RTE. 41 (SKOKIE HWY)  
AT LAKE COOK ROAD

GROSS LENGTH = 32,736 FT. = 6.2 MILES  
NET LENGTH = 32,736 FT. = 6.2 MILES

F.A. RTE.	SECTION	COUNTY	TOTAL SHEETS	SHEET NO.
	06-00924-00-TL	LAKE	76	1
		ILLINOIS	CONTRACT NO. 63485	



LOCATION OF SECTION INDICATED THUS: - ■ -

STATE OF ILLINOIS  
DEPARTMENT OF TRANSPORTATION  
DIVISION OF HIGHWAYS

APPROVED April 30, 2010  
Mark H. Bausher  
LAKE COUNTY DIVISION OF TRANSPORTATION, COUNTY ENGINEER

PASSED MAY 27, 2010  
Chris Chausse  
DISTRICT 1 ENGINEER OF LOCAL ROADS AND STREETS

RELEASING FOR BID  
BASED ON LIMITED REVIEW MAY 27, 2010  
Diane M. O'Keefe  
DEPUTY DIRECTOR OF HIGHWAYS, REGION 1 ENGINEER

**PRINTED BY THE AUTHORITY  
OF THE STATE OF ILLINOIS**

George M. Ziegler 4/21/2010  
ENGINEER DATE

GEORGE M. ZIEGLER  
ILLINOIS REGISTRATION No. 062-045853  
EXPIRATION DATE: 11-30-2011  
PROFESSIONAL DESIGN FIRM No.: 184-001742  
EXPIRATION DATE: 04-30-2011

CHRISTOPHER B. BURKE ENGINEERING LTD.  
9575 West Higgins Road, Suite 600  
Rosemont, Illinois 60018 (847) 823-0500

FEDERAL AID DESIGN ENGINEER: ALEX HOUSEH  
(847) 705-4410