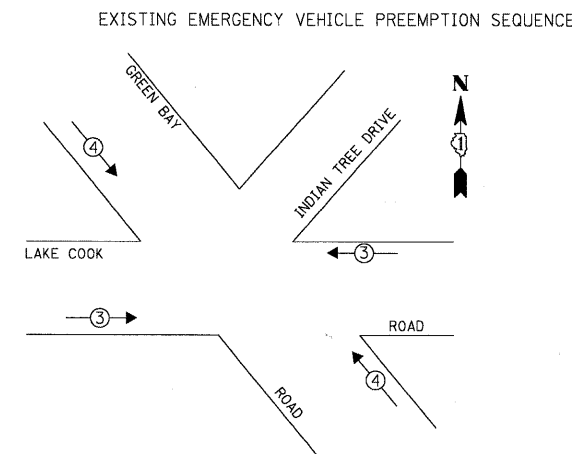
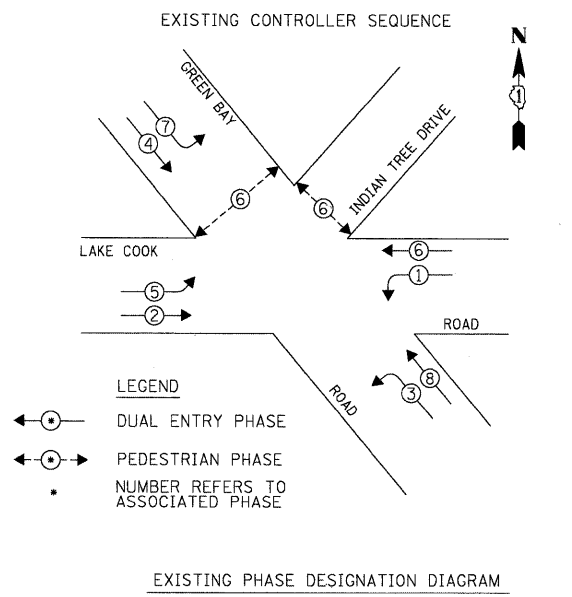
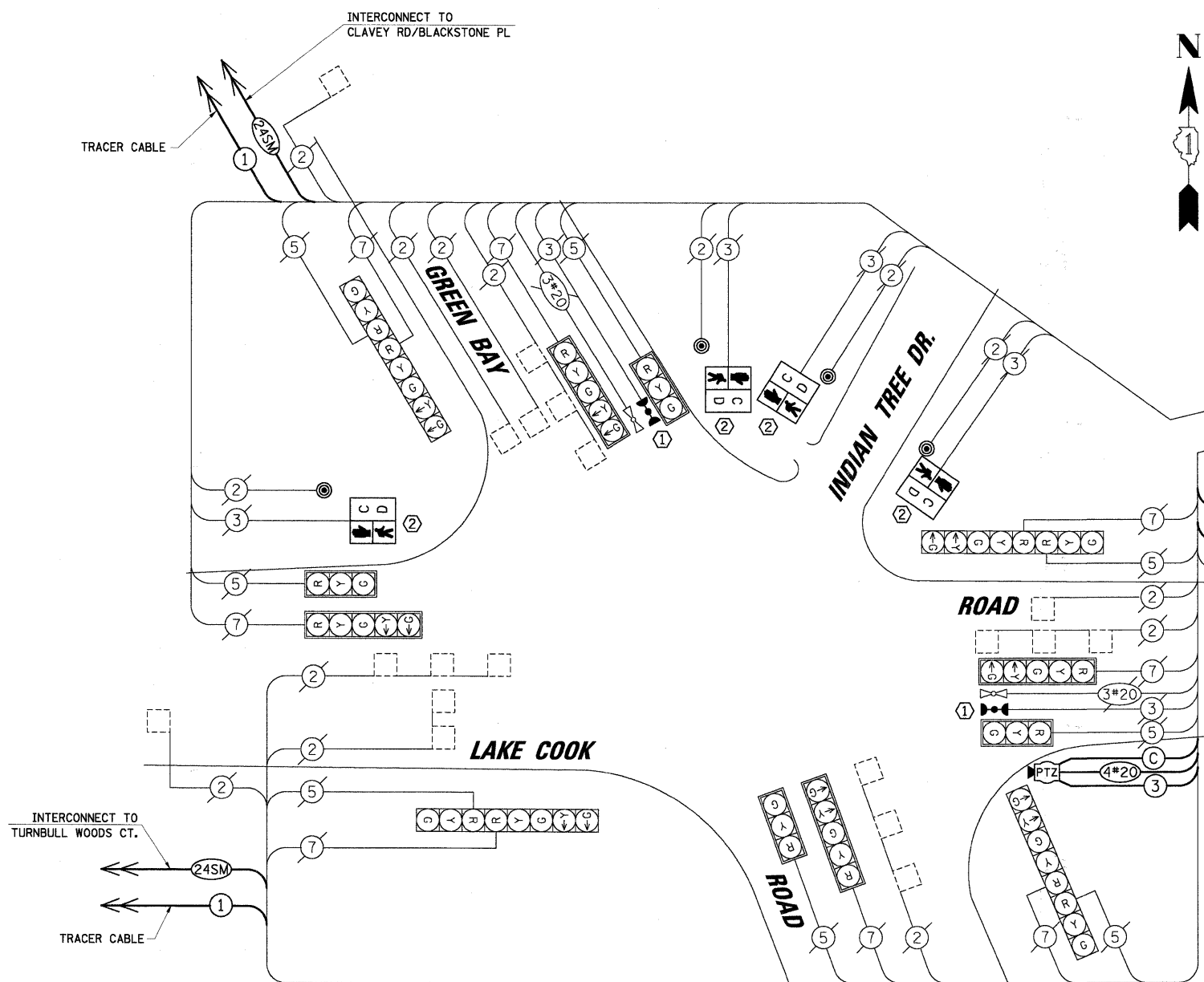


DATE: \_\_\_\_\_ BY: \_\_\_\_\_  
 SURVEYED: \_\_\_\_\_ PLOTTED: \_\_\_\_\_  
 PLAN: \_\_\_\_\_ NOTE BOOK: \_\_\_\_\_  
 NO. \_\_\_\_\_ NO. \_\_\_\_\_  
**CHRISTOPHER B. BURKE ENGINEERING LTD.**  
 3575 West Higgins Road, Suite 600  
 Rosemont, Illinois 60018  
 (847) 823-0500  
 DATE: \_\_\_\_\_ BY: \_\_\_\_\_  
 SURVEYED: \_\_\_\_\_ PLOTTED: \_\_\_\_\_  
 PLAN: \_\_\_\_\_ NOTE BOOK: \_\_\_\_\_  
 NO. \_\_\_\_\_ NO. \_\_\_\_\_



EXISTING EMERGENCY VEHICLE PREEMPTORS			
EMERGENCY VEHICLE PREEMPTOR	3	4	
MOVEMENT	← →	↔	



NOTE:  
 THE TRAFFIC SIGNAL CONTROLLER EQUIPMENT FOR THIS PROJECT SHALL BE "ECONOLITE" TO MATCH THE EXISTING ADJACENT SYSTEM.

**CONSTRUCTION NOTES:**

- ALL EXISTING CONFIRMATION BEACONS SHALL BE RETROFITTED WITH L.E.D. INDICATIONS. THIS WORK SHALL BE INCLUDED IN THE COST FOR THE PAY ITEM: UNINTERRUPTIBLE POWER SUPPLY.
- REMOVE EXISTING PEDESTRIAN SIGNAL HEAD, 1-FACE AND PUSHBUTTONS. REPLACE WITH NEW PEDESTRIAN HEAD, L.E.D., 1-FACE WITH COUNTDOWN TIMER AND NEW PEDESTRIAN PUSHBUTTON, SPECIAL. RE-USE ALL EXISTING CABLES.
- RELOCATE EXISTING LIGHT DETECTOR AMPLIFIER TO NEW CONTROLLER CABINET.
- THE TRAFFIC SIGNAL CONTROLLER SHALL BE NTCIP COMPATIBLE.
- POWDER COAT CAMERA MOUNTING ASSEMBLY TO MATCH EXISTING MAST ARM. POWDER COATING SHALL BE INCLUDED IN THE COST FOR THE PAY ITEM: CAMERA MOUNTING ASSEMBLY, SPECIAL.
- INSTALL NEW POLE MOUNT SERVICE INSTALLATION. INSTALL SERVICE GROUND CABLE IN EXISTING CONDUIT.
- INSTALL NEW PTZ CAMERA TO NEW CAMERA MOUNTING ASSEMBLY, SPECIAL ON EXISTING SIGNAL MAST ARM.

L.C.D.O.T. TRAFFIC SIGNAL INSTALLATION ELECTRICAL SERVICE REQUIREMENTS					
TYPE	NO. OF LAMPS	WATTAGE X INCAND.	LED	% OPERATION	TOTAL WATTAGE
SIGNAL (RED)	16		10	0.50	80.0
(YELLOW)	16		19	0.10	30.4
(GREEN)	16		11	0.40	70.4
ARROW	16		9	0.10	14.4
PED. SIGNAL	4		9	1.00	36.0
CONTROLLER	1		100	1.00	100.0
LUMINAIRE	-		250	0.50	-
L.E.D. ST. NAME SIGN	-		64	0.50	-
VIDEO SYSTEM	1		150	1.00	150.0
BATTERY BACKUP	1		25	1.00	25.0

ENERGY COSTS TO: TOTAL = 506.2

**CITY OF HIGHLAND PARK**

1707 ST. JOHNS AVENUE  
 HIGHLAND PARK, IL 60035-3593

ENERGY SUPPLY: CONTACT: JEAN WILL  
 PHONE: (847) 816-5459  
 COMPANY: COMED

**SCHEDULE OF QUANTITIES**

ITEM	UNIT	TOTAL
MAINTENANCE OF EXISTING TRAFFIC SIGNAL INSTALLATION	EACH	1
FULL-ACTUATED CONTROLLER AND TYPE IV CABINET, SPECIAL	EACH	1
RELOCATE EXISTING EMERGENCY VEHICLE PRIORITY SYSTEM, PHASING UNIT	EACH	1
REMOVE EXISTING TRAFFIC SIGNAL EQUIPMENT	EACH	1
SERVICE INSTALLATION - POLE MOUNTED	EACH	1
UNINTERRUPTIBLE POWER SUPPLY	EACH	1
REMOTE-CONTROLLED VIDEO SYSTEM	EACH	1
LAYER II (DATALINK) SWITCH	EACH	1
VIDEO ENCODER	EACH	1
CAMERA MOUNTING ASSEMBLY, SPECIAL	EACH	1
DRILL EXISTING HANDHOLE	EACH	3
PEDESTRIAN SIGNAL HEAD, LED, 1-FACE, BRACKET MOUNTED WITH COUNTDOWN TIMER	EACH	4
PEDESTRIAN PUSH-BUTTON, SPECIAL	EACH	4
INDUCTIVE LOOP DETECTOR	EACH	13
ELECTRIC CABLE IN CONDUIT, GROUNDING NO. 6 1C	FOOT	45
ELECTRIC CABLE IN CONDUIT, SIGNAL NO. 14 3C	FOOT	198
ELECTRIC CABLE IN CONDUIT, COAXIAL	FOOT	198
ELECTRIC CABLE IN CONDUIT, 4/C # 20, VIDEO	FOOT	198