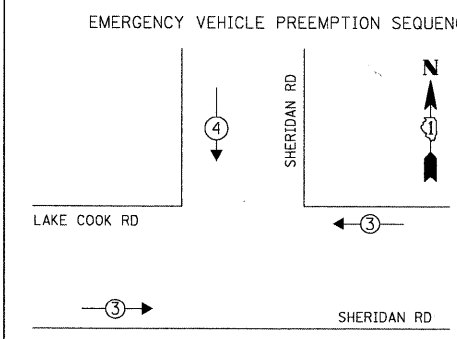
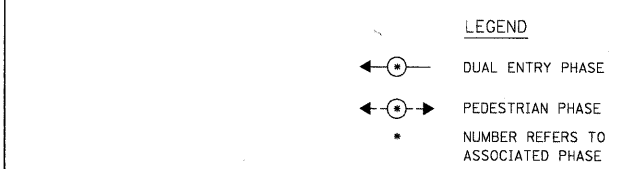
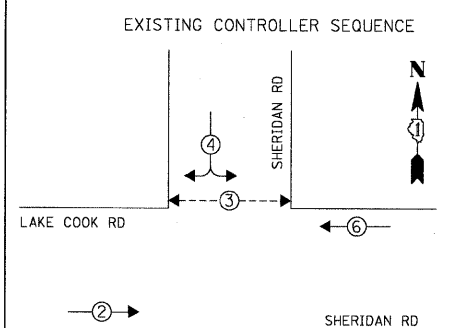
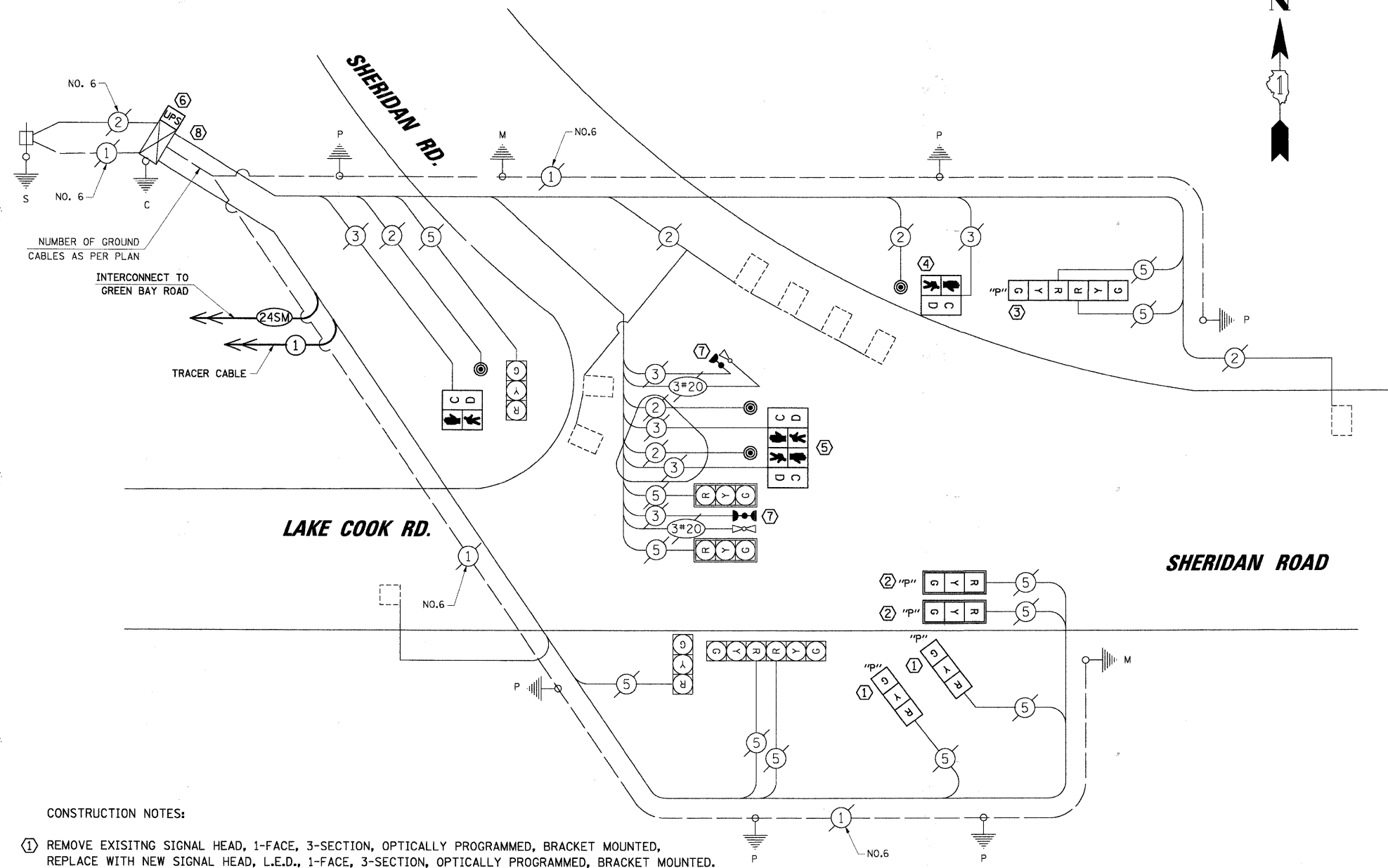


DATE: _____ BY: _____
 SURVEYED: _____ PLOTTED: _____
 PLAN: _____ NOTE BOOK: _____
 NO. _____ NO. _____
CHRISTOPHER B. BURKE ENGINEERING LTD.
 9575 West Higgins Road, Suite 600
 Rosemont, Illinois 60018
 (847) 823-0500
 PROFILE: SURVEYED: _____ PLOTTED: _____
 NOTE BOOK: _____ NO. _____
 STRUCTURE NOTATIONS: CHRD



EXISTING EMERGENCY VEHICLE PREEMPTORS		
EMERGENCY VEHICLE PREEMPTOR	3	4
MOVEMENT	←	↓



- CONSTRUCTION NOTES:**
- REMOVE EXISTING SIGNAL HEAD, 1-FACE, 3-SECTION, OPTICALLY PROGRAMMED, BRACKET MOUNTED, REPLACE WITH NEW SIGNAL HEAD, L.E.D., 1-FACE, 3-SECTION, OPTICALLY PROGRAMMED, BRACKET MOUNTED. RE-USE ALL EXISTING CABLES.
 - REMOVE EXISTING SIGNAL HEAD, 1-FACE, 3-SECTION, OPTICALLY PROGRAMMED, MAST ARM MOUNTED, REPLACE WITH NEW SIGNAL HEAD, L.E.D., 1-FACE, 3-SECTION, OPTICALLY PROGRAMMED, MAST ARM MOUNTED. RE-USE ALL EXISTING CABLES.
 - REMOVE EXISTING SIGNAL HEAD, 2-FACE, 3-SECTION, 1-3 SECTION OPTICALLY PROGRAMMED AND 1-3 SECTION BRACKET MOUNTED. REPLACE WITH NEW SIGNAL HEAD, L.E.D., 1-FACE, 3-SECTION, OPTICALLY PROGRAMMED AND 1-3 SECTION, BRACKET MOUNTED. RE-USE EXISTING CABLE
 - REMOVE EXISTING PEDESTRIAN SIGNAL HEAD, 1-FACE AND PUSHBUTTON. REPLACE WITH NEW PEDESTRIAN SIGNAL HEAD, L.E.D., 1-FACE, WITH COUNTDOWN TIMER AND NEW PEDESTRIAN PUSHBUTTON. RE-USE ALL EXISTING CABLES.
 - REMOVE EXISTING PEDESTRIAN SIGNAL HEAD, 2-FACE AND PUSHBUTTONS. REPLACE WITH NEW PEDESTRIAN SIGNAL HEAD, L.E.D., 2-FACE WITH COUNTDOWN TIMER AND NEW PEDESTRIAN PUSHBUTTON. RE-USE ALL EXISTING CABLES.
 - INSTALL UNINTERRUPTIBLE POWER SUPPLY (UPS).
 - ALL EXISTING CONFIRMATION BEACONS SHALL BE RETROFITTED WITH LED INDICATIONS. THIS WORK SHALL BE INCLUDED IN THE COST FOR THE PAY ITEM: UNINTERRUPTIBLE POWER SUPPLY.
 - THE TRAFFIC SIGNAL CONTROLLER SHALL BE NTCIP COMPATIBLE.

I.D.O.T. TRAFFIC SIGNAL INSTALLATION ELECTRICAL SERVICE REQUIREMENTS					TOTAL WATTAGE
TYPE	NO. OF LAMPS	WATTAGE X INCAND.	LED X % OPERATION		
SIGNAL (RED)	12	17	0.50	120.00	
(YELLOW)	12	25	0.25	75.00	
(GREEN)	12	15	0.25	45.00	
ARROW	-	12	0.10	-	
PED. SIGNAL	4	25	1.00	100.00	
CONTROLLER	1	100	1.00	100.00	
L.E.D. ST. NAME SIGN	-	64	0.50	-	
VIDEO SYSTEM	-	150	1.00	-	
BATTERY BACKUP SYSTEM	1	25	1.00	25.0	
FLASHER	-	-	0.50	-	
ENERGY COSTS TO:				TOTAL =	447.00

ILLINOIS DEPARTMENT OF TRANSPORTATION
 DIVISION OF HIGHWAY/DISTRICT 1
 201 WEST CENTER COURT/SCHAUMBURG, ILLINOIS 60196-1096
 ENERGY SUPPLY: CONTACT: JEAN WILL
 PHONE: (847) 816-5459
 COMPANY: COMED

CABLE PLAN

SCHEDULE OF QUANTITIES		
ITEM	UNIT	TOTAL
MAINTENANCE OF EXISTING TRAFFIC SIGNAL INSTALLATION	EACH	1
FULL-ACTUATED CONTROLLER IN EXISTING CABINET, SPECIAL	EACH	1
DRILL EXISTING HANDHOLE	EACH	1
PEDESTRIAN SIGNAL HEAD, LED, 2-FACE, BRACKET MOUNTED WITH COUNTDOWN TIMER	EACH	1
MODIFY EXISTING CONTROLLER CABINET	EACH	1
REMOVE EXISTING TRAFFIC SIGNAL EQUIPMENT	EACH	1
UNINTERRUPTIBLE POWER SUPPLY	EACH	1
COMBINATION SIGNAL HEAD, LED, 2-FACE, 1-3SECTION OPTICALLY PROGRAMMED, 1-3 SECTION BRACKET MOUNTED	EACH	1
LAYER II (DATA LINK) SWITCH	EACH	1
PEDESTRIAN SIGNAL HEAD, LED, 1-FACE, BRACKET MOUNTED WITH COUNTDOWN TIMER	EACH	2
OPTICALLY PROGRAMMED SIGNAL HEAD, LED, 1-FACE, 3-SECTION, BRACKET MOUNTED	EACH	2
OPTICALLY PROGRAMMED SIGNAL HEAD, LED, 1-FACE, 3-SECTION, MAST ARM MOUNTED	EACH	2
PEDESTRIAN PUSH-BUTTON	EACH	4
PORTLAND CEMENT CONCRETE SIDEWALK 5 INCH	SQ FT	25

NOTE:
 THE TRAFFIC SIGNAL CONTROLLER EQUIPMENT FOR THIS PROJECT SHALL BE "EAGLE" TO MATCH THE EXISTING ADJACENT SYSTEM.

FILE NAME = N:\CDDT\B90407\Tran\Fic\CAB.LCRD-Sheridan.dgn	USER NAME = FBARISO	DESIGNED - ABR	REVISED -
		DRAWN - FPB / FCP	REVISED -
		CHECKED - MJT	REVISED -
		DATE - APRIL 30, 2010	REVISED -

STATE OF ILLINOIS DEPARTMENT OF TRANSPORTATION

SCHEDULE OF QUANTITIES, CABLE PLAN, PHASE DESIGNATION DIAGRAM AND EMERGENCY VEHICLE PREEMPTION SEQUENCE LAKE COOK ROAD AND SHERIDAN ROAD
 SCALE: NOT TO SCALE SHEET NO. -- OF -- SHEETS STA. -- TO STA. --

F.A.P. RTE.	SECTION	COUNTY	TOTAL SHEETS	SHEET NO.
	06-00924-00-TL	LAKE	76	22
CONTRACT NO. 63485			ILLINOIS FED. AID PROJECT	