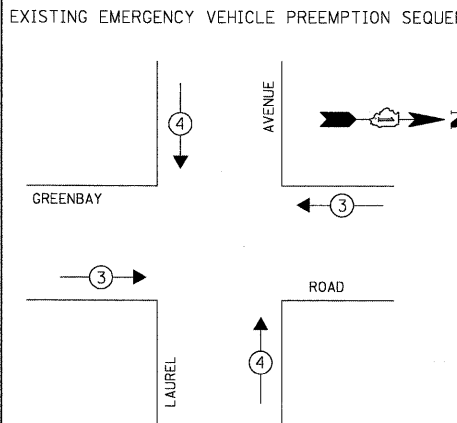
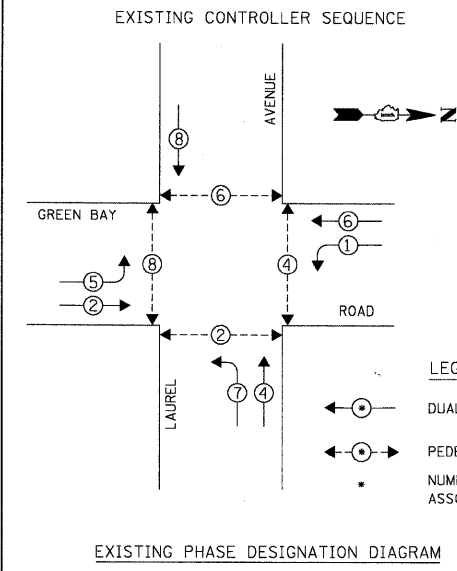


BY: DATE: SURVIVED: PLOTTED: CHECKED: BY: DATE: PLAN: NOTE BOOK NO. FILE NAME: CHRISTOPHER B. BURKE ENGINEERING LTD. 9575 West Higgins Road, Suite 600 Rosemont, Illinois 60018 (847) 823-0500



EXISTING EMERGENCY VEHICLE PREEMPTORS			
EMERGENCY VEHICLE PREEMPTOR	3	4	
MOVEMENT	← →	↑ ↓	

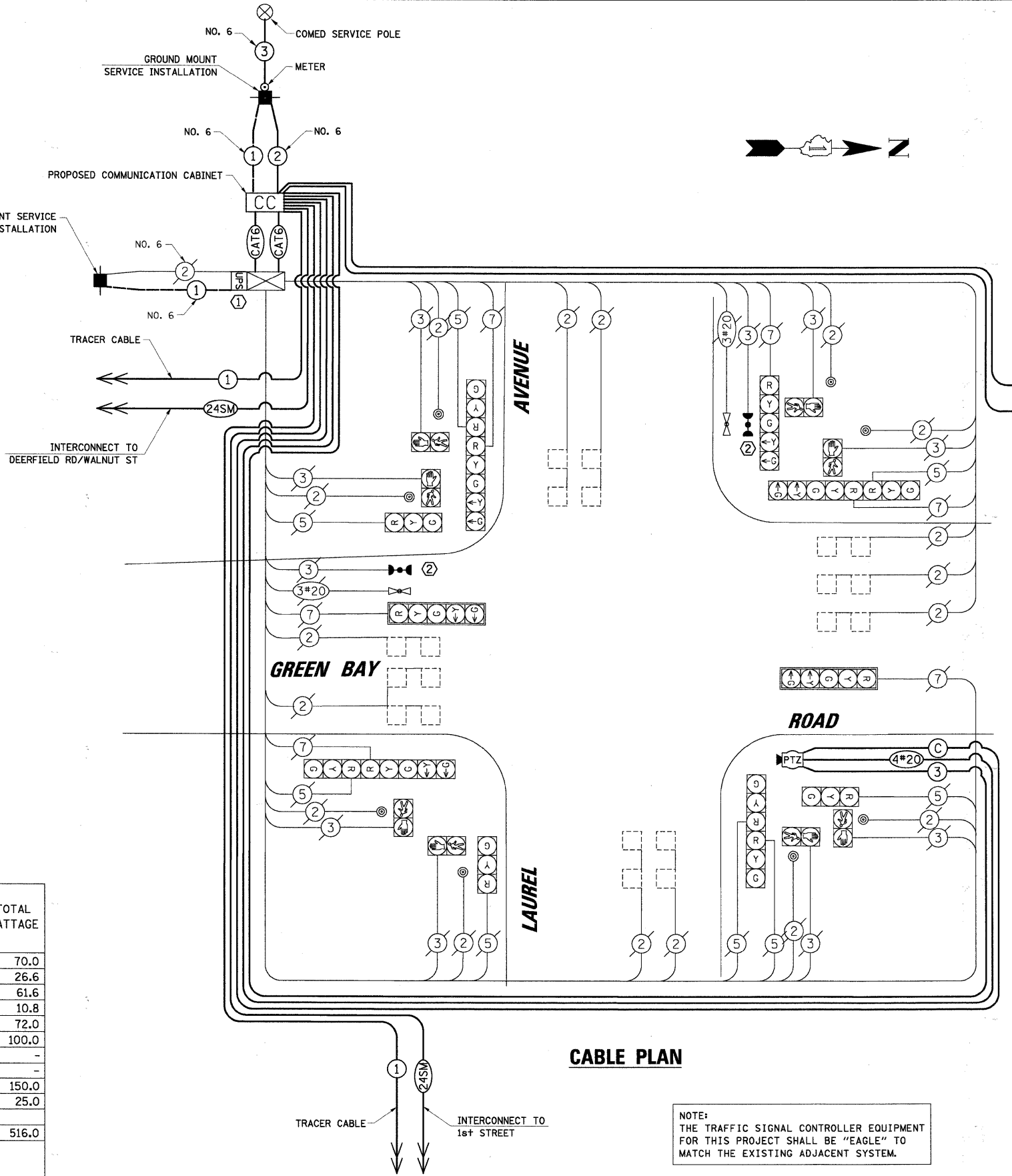
L.C.D.O.T. TRAFFIC SIGNAL INSTALLATION ELECTRICAL SERVICE REQUIREMENTS					TOTAL WATTAGE
TYPE	NO. OF LAMPS	WATTAGE X INCAND.	LED % OPERATION		
SIGNAL (RED)	14	10	0.50		70.0
(YELLOW)	14	19	0.10		26.6
(GREEN)	14	11	0.40		61.6
ARROW	12	9	0.10		10.8
PED. SIGNAL	8	9	1.00		72.0
CONTROLLER	1	100	1.00		100.0
LUMINAIRE	-	250	0.50		-
L.E.D. ST. NAME SIGN	-	64	0.50		-
VIDEO SYSTEM	1	150	1.00		150.0
BATTERY BACKUP	1	25	1.00		25.0

ENERGY COSTS TO: TOTAL = 516.0

CITY OF HIGHLAND PARK

1707 ST. JOHNS AVENUE
HIGHLAND PARK, IL 60035-3593

ENERGY SUPPLY: CONTACT: JEAN WILL
PHONE: (847) 816-5459
COMPANY: COMED



NOTE: THE TRAFFIC SIGNAL CONTROLLER EQUIPMENT FOR THIS PROJECT SHALL BE "EAGLE" TO MATCH THE EXISTING ADJACENT SYSTEM.

THE FOLLOWING ITEMS SHALL BE REMOVED BY THE CONTRACTOR AND SHALL BE DISPOSED OF BY THEM OUTSIDE THE RIGHT-OF-WAY AT THEIR EXPENSE. THE SALVAGE VALUE OF THE REMOVED EQUIPMENT SHALL BE REFLECTED IN THE CONTRACT BID PRICE.

- 1 EACH CONTROLLER
- 1 EACH SERVICE INSTALLATION

- CONSTRUCTION NOTES:**
- ① INSTALL UNINTERRUPTIBLE POWER SUPPLY (UPS).
 - ② ALL EXISTING CONFIRMATION BEACONS SHALL BE RETROFITTED WITH LED INDICATIONS. THIS WORK SHALL BE INCLUDED IN THE COST FOR THE PAY ITEM: UNINTERRUPTIBLE POWER SUPPLY.
 - ③ THE TRAFFIC SIGNAL CONTROLLER SHALL BE NTCIP COMPATIBLE.
 - ④ INSTALL NEW POLE MOUNT SERVICE INSTALLATION. INSTALL SERVICE GROUND CABLE IN EXISTING CONDUIT.
 - ⑤ INSTALL NEW PTZ CAMERA ON EXISTING COMBINATION MAST ARM.
 - ⑥ ALL CABLES FROM PTZ SHALL GO DIRECTLY TO COMMUNICATION CABINET.
 - ⑦ CAT 6 CABLE GOES FROM NEW TRAFFIC SIGNAL CONTROLLER TO LAYER III SWITCH IN COMMUNICATION CABINET.
 - ⑧ VIDEO ENCODER SHALL BE MOUNTED IN THE COMMUNICATION CABINET.

SCHEDULE OF QUANTITIES		
ITEM	UNIT	TOTAL
MAINTENANCE OF EXISTING TRAFFIC SIGNAL INSTALLATION	EACH	1
FULL-ACTUATED CONTROLLER IN EXISTING CABINET, SPECIAL	EACH	1
MODIFY EXISTING CONTROLLER CABINET	EACH	1
REMOVE EXISTING TRAFFIC SIGNAL EQUIPMENT	EACH	1
CONCRETE FOUNDATION, SURVEILLANCE CABINET MODEL 334	EACH	1
SERVICE INSTALLATION - GROUND MOUNTED	EACH	1
SERVICE INSTALLATION - POLE MOUNTED	EACH	1
UNINTERRUPTIBLE POWER SUPPLY	EACH	1
REMOTE-CONTROLLED VIDEO SYSTEM	EACH	1
LAYER III (NETWORK) SWITCH	EACH	1
VIDEO ENCODER	EACH	1
VIDEO COMMUNICATIONS CABINET	EACH	1
LAYER III FIBER OPTIC TRANSCIVER MODULE, SFP TYPE, LONG DISTANCE	EACH	2
CONCRETE FOUNDATION, TYPE A	FOOT	4
DRILL EXISTING HANDHOLE	EACH	4
MEDIA CONVERTER	EACH	7
ELECTRIC CABLE IN CONDUIT, SERVICE NO. 6 3C	FOOT	30
OUTDOOR RATED NETWORK CABLE	FOOT	100
ELECTRIC CABLE IN CONDUIT, GROUND NO. 6 1C	FOOT	150
ELECTRIC CABLE IN CONDUIT, SIGNAL NO. 14 3C	FOOT	290
ELECTRIC CABLE IN CONDUIT, COAXIAL	FOOT	290
ELECTRIC CABLE IN CONDUIT, 4/C #20, VIDEO	FOOT	290