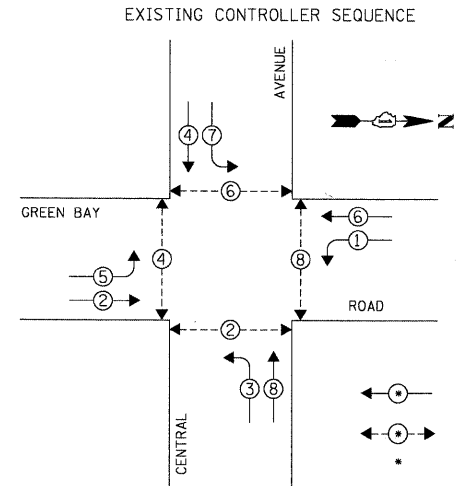


DATE: \_\_\_\_\_ BY: \_\_\_\_\_  
 SURVEYED: \_\_\_\_\_ PLOTTED: \_\_\_\_\_  
 CHECKED: \_\_\_\_\_ BY: \_\_\_\_\_  
 NOTE BOOK NO.: \_\_\_\_\_  
 PLAN NO.: \_\_\_\_\_  
 DATE: \_\_\_\_\_ BY: \_\_\_\_\_  
 SURVEYED: \_\_\_\_\_ PLOTTED: \_\_\_\_\_  
 CHECKED: \_\_\_\_\_ BY: \_\_\_\_\_  
 NOTE BOOK NO.: \_\_\_\_\_  
 PROFILE NO.: \_\_\_\_\_

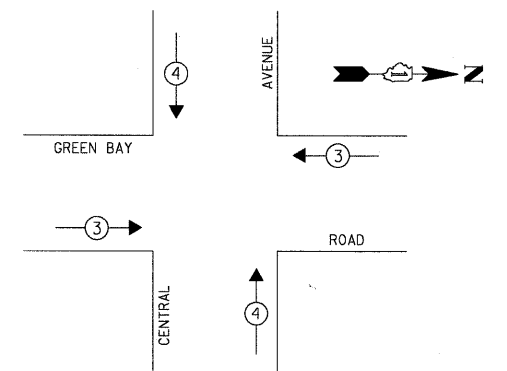
**CHRISTOPHER B. BURKE ENGINEERING LTD.**  
 9575 West Higgins Road, Suite 600  
 Rosemont, Illinois 60018  
 (847) 823-0500



**LEGEND**  
 ← ● → DUAL ENTRY PHASE  
 ← ● → PEDESTRIAN PHASE  
 \* NUMBER REFERS TO ASSOCIATED PHASE

EXISTING PHASE DESIGNATION DIAGRAM

EXISTING EMERGENCY VEHICLE PREEMPTION SEQUENCE



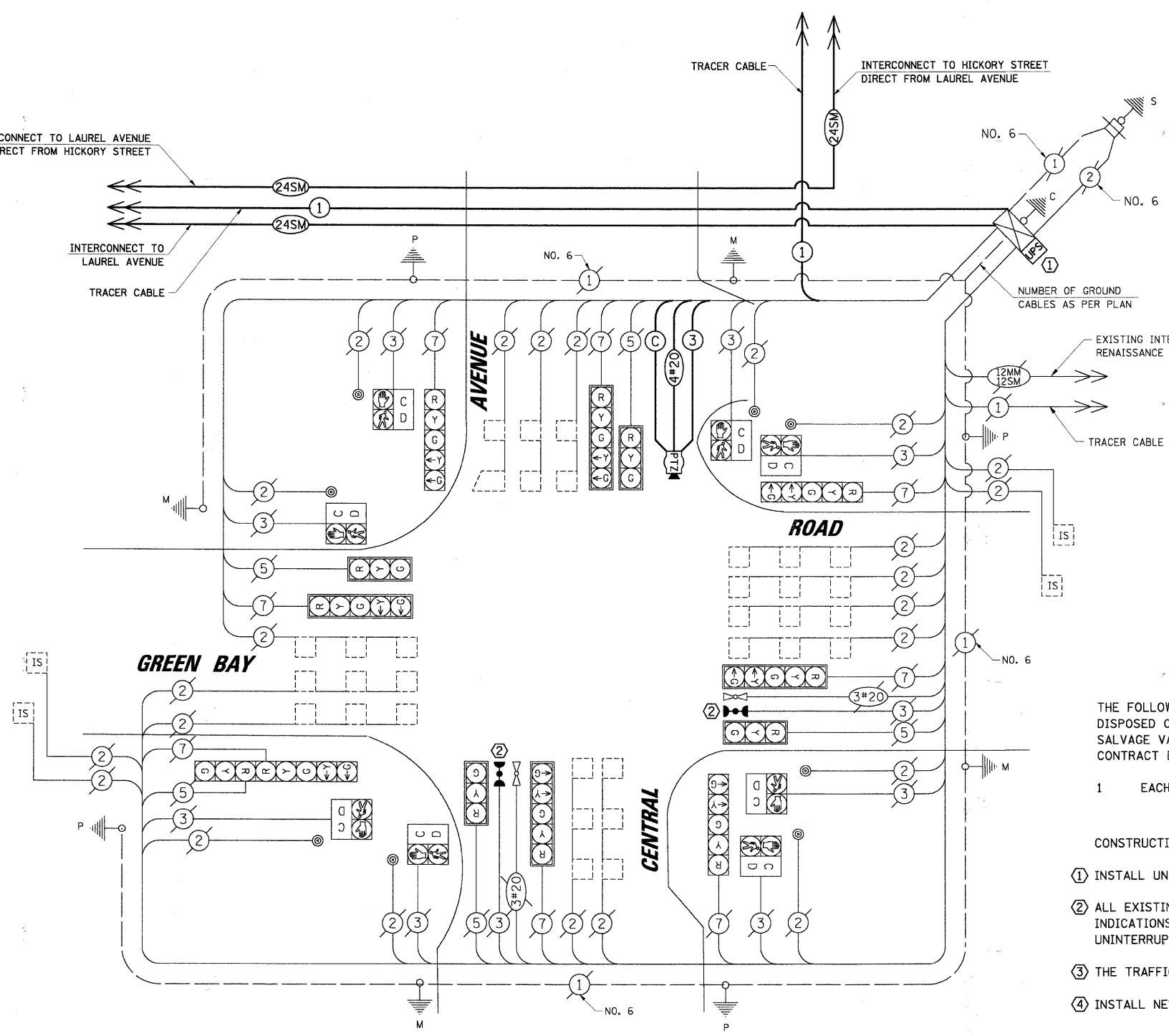
EXISTING EMERGENCY VEHICLE PREEMPTORS

EMERGENCY VEHICLE PREEMPTOR	3	4
MOVEMENT	← →	↑ ↓

L.C.D.O.T. TRAFFIC SIGNAL INSTALLATION ELECTRICAL SERVICE REQUIREMENTS

TYPE	NO. OF LAMPS	WATTAGE INCAND.	LED	% OPERATION	TOTAL WATTAGE
SIGNAL (RED)	13		10	0.50	65.0
(YELLOW)	13		19	0.10	24.7
(GREEN)	13		11	0.40	57.2
ARROW	16		9	0.10	14.4
PED. SIGNAL	8		9	1.00	72.0
CONTROLLER	1		100	1.00	100.0
LUMINAIRE	-		250	0.50	-
L.E.D. ST. NAME SIGN	-		64	0.50	-
VIDEO SYSTEM	1		150	1.00	150.0
BATTERY BACKUP	1		25	1.00	25.0

ENERGY COSTS TO: TOTAL = 508.30  
**CITY OF HIGHLAND PARK**  
 1707 ST. JOHNS AVENUE  
 HIGHLAND PARK, IL 60035-3593  
 ENERGY SUPPLY: CONTACT: JEAN WILL  
 PHONE: (847) 816-5459  
 COMPANY: COMED



**CABLE PLAN**

NOTE:  
 THE TRAFFIC SIGNAL CONTROLLER EQUIPMENT FOR THIS PROJECT SHALL BE "EAGLE" TO MATCH THE EXISTING ADJACENT SYSTEM.

THE FOLLOWING ITEMS SHALL BE REMOVED BY THE CONTRACTOR AND SHALL BE DISPOSED OF BY THEM OUTSIDE THE RIGHT-OF-WAY AT THEIR EXPENSE. THE SALVAGE VALUE OF THE REMOVED EQUIPMENT SHALL BE REFLECTED IN THE CONTRACT BID PRICE.

- 1 EACH CONTROLLER

CONSTRUCTION NOTES:

- ① INSTALL UNINTERRUPTIBLE POWER SUPPLY (UPS).
- ② ALL EXISTING CONFIRMATION BEACONS SHALL BE RETROFITTED WITH LED INDICATIONS. THIS WORK SHALL BE INCLUDED IN THE COST FOR THE PAY ITEM: UNINTERRUPTIBLE POWER SUPPLY.
- ③ THE TRAFFIC SIGNAL CONTROLLER SHALL BE NTCIP COMPATIBLE.
- ④ INSTALL NEW PTZ CAMERA ON EXISTING COMBINATION MAST ARM.

SCHEDULE OF QUANTITIES

ITEM	UNIT	TOTAL
MAINTENANCE OF EXISTING TRAFFIC SIGNAL INSTALLATION	EACH	1
FULL-ACTUATED CONTROLLER IN EXISTING CABINET, SPECIAL	EACH	1
MODIFY EXISTING CONTROLLER CABINET	EACH	1
REMOVE EXISTING TRAFFIC SIGNAL EQUIPMENT	EACH	1
UNINTERRUPTIBLE POWER SUPPLY	EACH	1
REMOTE-CONTROLLED VIDEO SYSTEM	EACH	1
LAYER II (DATALINK) SWITCH	EACH	1
VIDEO ENCODER	EACH	1
DRILL EXISTING HANDHOLE	EACH	2
TERMINATE FIBER IN CABINET	EACH	6
SPLICE FIBER IN CABINET	EACH	6
ELECTRIC CABLE IN CONDUIT, SIGNAL NO. 14 3C	FOOT	104
ELECTRIC CABLE IN CONDUIT, COAXIAL	FOOT	104
ELECTRIC CABLE IN CONDUIT, 4/C # 20, VIDEO	FOOT	104

FILE NAME =	USER NAME = FBARIGD	DESIGNED - ABR	REVISED -
N:\CDDT\090407\Traffic\CAB.LBRD-Central.dgn		DRAWN - FPB / FCP	REVISED -
		CHECKED - MJT	REVISED -
		DATE - APRIL 30, 2010	REVISED -

**STATE OF ILLINOIS**  
**DEPARTMENT OF TRANSPORTATION**

**SCHEDULE OF QUANTITIES, CABLE PLAN, PHASE DESIGNATION DIAGRAM AND EMERGENCY VEHICLE PREEMPTION SEQUENCE**  
**GREEN BAY ROAD AND CENTRAL AVENUE**  
 SCALE: NOT TO SCALE | SHEET NO. -- OF -- SHEETS | STA. -- TO STA. --

F.A.P. RTE.	SECTION	COUNTY	TOTAL SHEETS	SHEET NO.
	06-00924-00-TL	LAKE	76	28
CONTRACT NO. 63485			ILLINOIS FED. AID PROJECT	