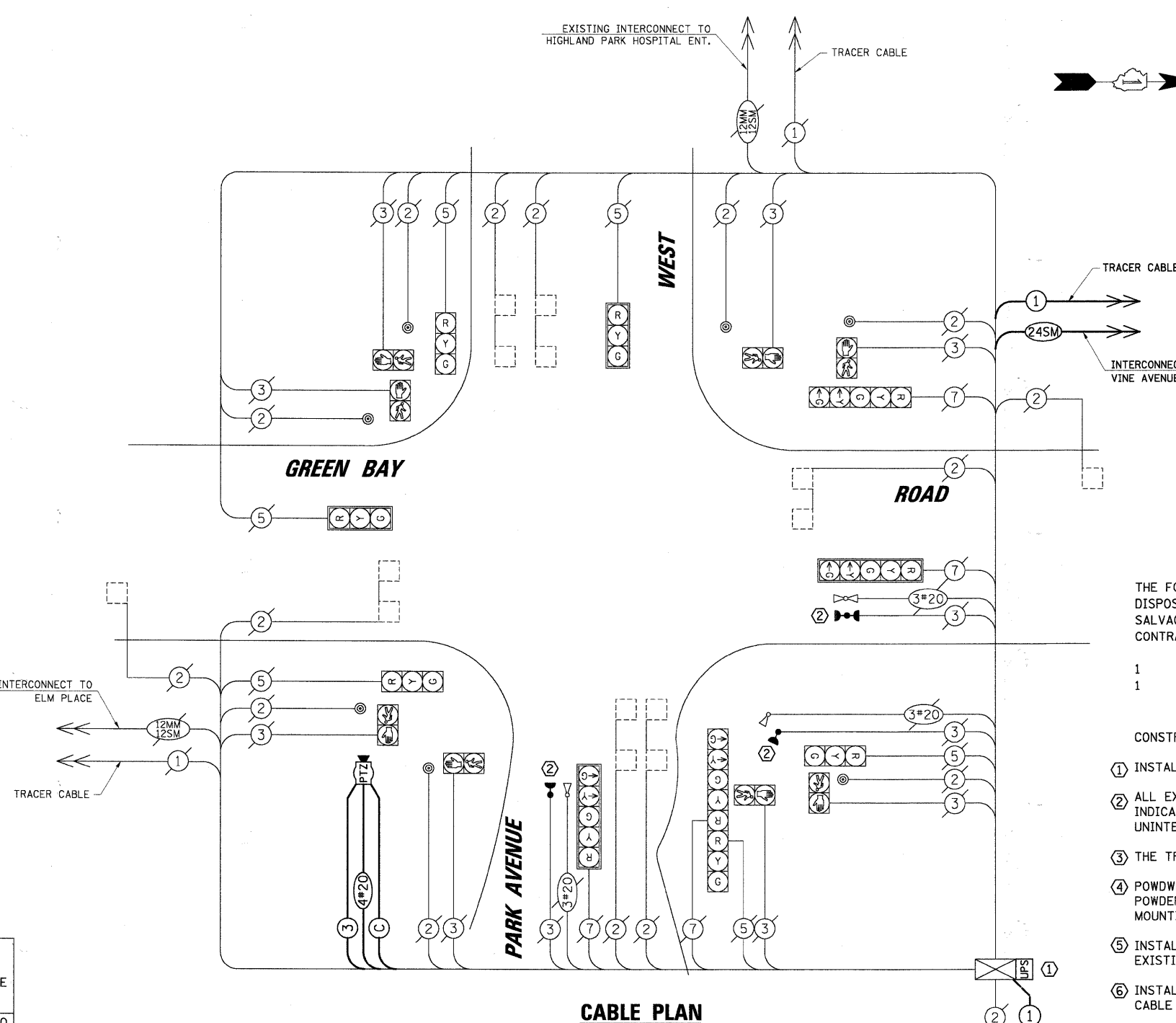
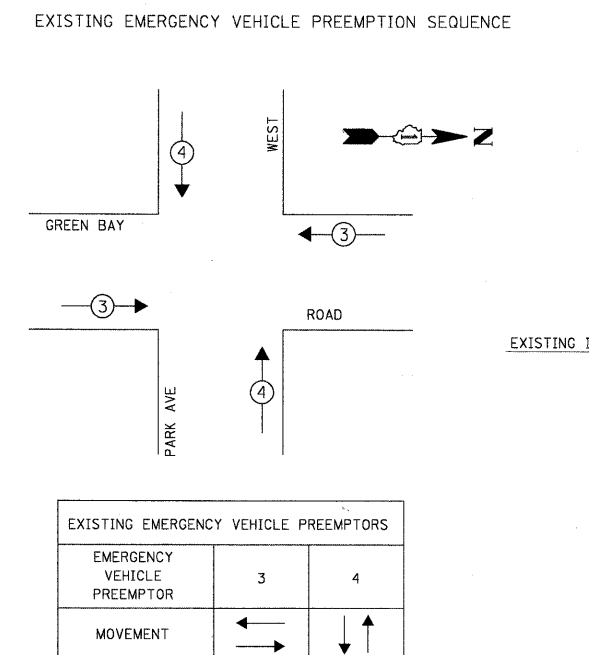
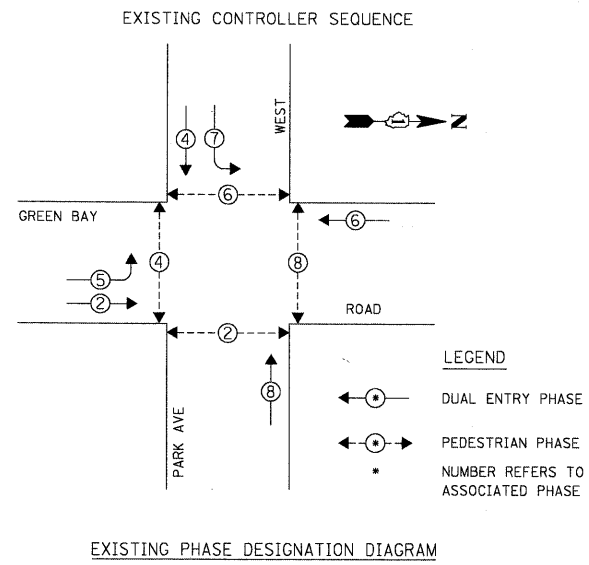


DATE: \_\_\_\_\_ BY: \_\_\_\_\_  
 SURVEYED: \_\_\_\_\_ PLOTTED: \_\_\_\_\_  
 PLAN: \_\_\_\_\_ NOTE BOOK: \_\_\_\_\_  
 NO. \_\_\_\_\_ NO. \_\_\_\_\_  
 STRUCTURE: \_\_\_\_\_ NOTATION: \_\_\_\_\_  
**CHRISTOPHER B. BURKE ENGINEERING LTD.**  
 9575 West Higgins Road, Suite 600  
 Rosemont, Illinois 60018  
 (847) 923-0500



- THE FOLLOWING ITEMS SHALL BE REMOVED BY THE CONTRACTOR AND SHALL BE DISPOSED OF BY THEM OUTSIDE THE RIGHT-OF-WAY AT THEIR EXPENSE. THE SALVAGE VALUE OF THE REMOVED EQUIPMENT SHALL BE REFLECTED IN THE CONTRACT BID PRICE.
- 1 EACH CONTROLLER
  - 1 EACH SERVICE INSTALLATION

- CONSTRUCTION NOTES:
- ① INSTALL UNINTERRUPTIBLE POWER SUPPLY (UPS).
  - ② ALL EXISTING CONFIRMATION BEACONS SHALL BE RETROFITTED WITH LED INDICATIONS. THIS WORK SHALL BE INCLUDED IN THE COST FOR THE PAY ITEM: UNINTERRUPTIBLE POWER SUPPLY.
  - ③ THE TRAFFIC SIGNAL CONTROLLER SHALL BE NTCIP COMPATIBLE.
  - ④ POWDER COAT CAMERA MOUNTING ASSEMBLY TO MATCH EXISTING MAST ARM. POWDER COATING SHALL BE INCLUDED IN THE COST FOR THE PAY ITEM: CAMERA MOUNTING ASSEMBLY, SPECIAL.
  - ⑤ INSTALL NEW PTZ CAMERA TO NEW CAMERA MOUNTING ASSEMBLY, SPECIAL ON EXISTING SIGNAL MAST ARM.
  - ⑥ INSTALL NEW POLE MOUNT SERVICE INSTALLATION. INSTALL SERVICE GROUND CABLE ON EXISTING CONDUIT.

NOTE:  
 THE TRAFFIC SIGNAL CONTROLLER EQUIPMENT FOR THIS PROJECT SHALL BE "EAGLE" TO MATCH THE EXISTING ADJACENT SYSTEM.

L.C.D.O.T. TRAFFIC SIGNAL INSTALLATION ELECTRICAL SERVICE REQUIREMENTS					TOTAL WATTAGE
TYPE	NO. OF LAMPS	WATTAGE X INCAND.	LED	% OPERATION	
SIGNAL (RED)	10	10	0.50		50.0
(YELLOW)	10	19	0.10		19.0
(GREEN)	10	11	0.40		44.0
ARROW	8	9	0.10		7.2
PED. SIGNAL	8	9	1.00		72.0
CONTROLLER	1	100	1.00		-
LUMINAIRE	-	250	0.50		-
L.E.D. ST. NAME SIGN	-	64	0.50		-
VIDEO SYSTEM	1	150	1.00		150.0
BATTERY BACKUP	1	25	1.00		25.0
ENERGY COSTS TO:				TOTAL =	367.20

**CITY OF HIGHLAND PARK**  
 1707 ST. JOHNS AVENUE  
 HIGHLAND PARK, IL 60035-3593  
 ENERGY SUPPLY: CONTACT: JEAN WILL  
 PHONE: (847) 816-5459  
 COMPANY: COMED

SCHEDULE OF QUANTITIES	UNIT	TOTAL
MAINTENANCE OF EXISTING TRAFFIC SIGNAL INSTALLATION	EACH	1
FULL-ACTUATED CONTROLLER IN EXISTING CABINET, SPECIAL	EACH	1
MODIFY EXISTING CONTROLLER CABINET	EACH	1
REMOVE EXISTING TRAFFIC SIGNAL EQUIPMENT	EACH	1
SERVICE INSTALLATION - POLE MOUNTED	EACH	1
UNINTERRUPTIBLE POWER SUPPLY	EACH	1
REMOTE-CONTROLLED VIDEO SYSTEM	EACH	1
LAYER II (DATALINK) SWITCH	EACH	1
VIDEO ENCODER	EACH	1
CAMERA MOUNTING ASSEMBLY, SPECIAL	EACH	1
DRILL EXISTING HANDHOLE	EACH	1
SPLICE FIBER IN CABINET	EACH	6
TERMINATE FIBER IN CABINET	EACH	12
ELECTRIC CABLE IN CONDUIT, GROUNDING NO. 6 1C	FOOT	35
ELECTRIC CABLE IN CONDUIT, SIGNAL NO. 14 3C	FOOT	175
ELECTRIC CABLE IN CONDUIT, COAXIAL	FOOT	175
ELECTRIC CABLE IN CONDUIT, 4/C # 20, VIDEO	FOOT	175