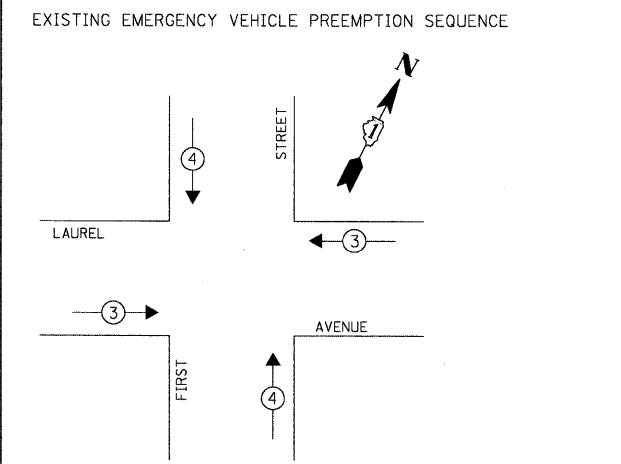
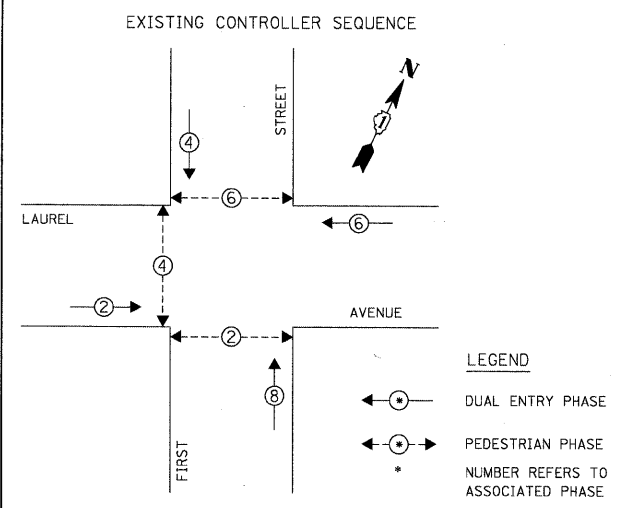


DATE: _____ BY: _____
 SURVEYED: _____ PLOTTED: _____ CHECKED: _____
 PLAN: _____ NOTE BOOK: _____ NO. _____
CHRISTOPHER B. BURKE ENGINEERING LTD.
 9575 West Higgins Road, Suite 600
 Rosemont, Illinois 60018
 (847) 823-0500
 PROFILE: _____ DATE: _____
 PLOTTED: _____ CHECKED: _____
 NOTE BOOK: _____ NO. _____
 STRUCTURE NOTATIONS: _____



| EXISTING EMERGENCY VEHICLE PREEMPTORS | | |
|---------------------------------------|-----|-----|
| EMERGENCY VEHICLE PREEMPTOR | 3 | 4 |
| MOVEMENT | ← → | ↑ ↓ |

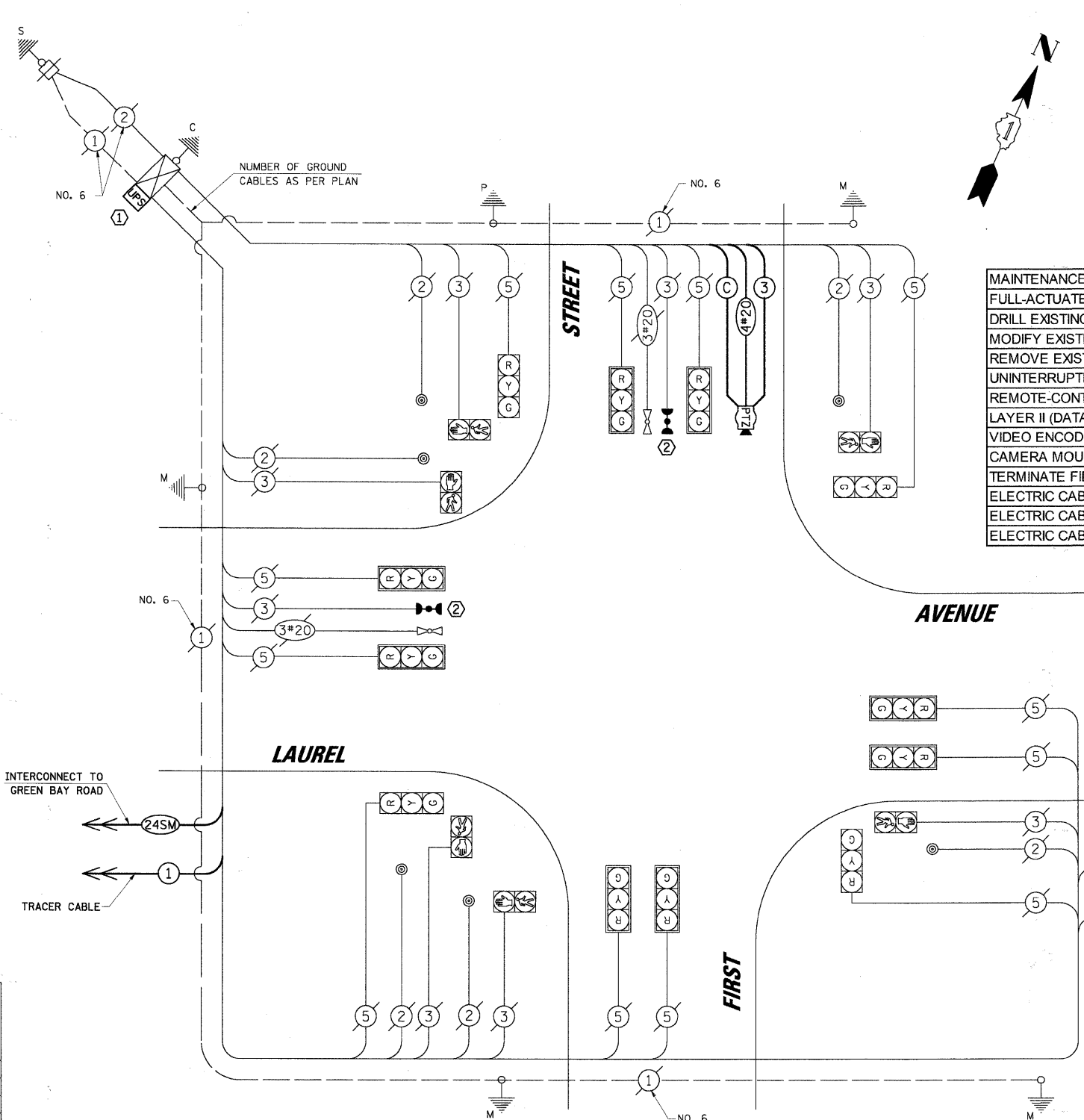
| L.C.D.O.T. TRAFFIC SIGNAL INSTALLATION ELECTRICAL SERVICE REQUIREMENTS | | | | | TOTAL WATTAGE |
|--|--------------|-------------------|-----|-------------|---------------|
| TYPE | NO. OF LAMPS | WATTAGE X INCAND. | LED | % OPERATION | |
| SIGNAL (RED) | 12 | | 10 | 0.50 | 60.00 |
| (YELLOW) | 12 | | 19 | 0.10 | 22.80 |
| (GREEN) | 12 | | 11 | 0.40 | 52.80 |
| ARROW | - | | 9 | 0.10 | - |
| PED. SIGNAL | 6 | | 9 | 1.00 | 54.0 |
| CONTROLLER | 1 | | 100 | 1.00 | 100.0 |
| LUMINAIRE | - | | 250 | 0.50 | - |
| L.E.D. ST. NAME SIGN | - | | 64 | 0.50 | - |
| VIDEO SYSTEM | 1 | | 150 | 1.00 | 150.0 |
| BATTERY BACKUP | 1 | | 25 | 1.00 | 25.0 |

ENERGY COSTS TO: TOTAL = 464.60

CITY OF HIGHLAND PARK

1707 ST. JOHNS AVENUE
 HIGHLAND PARK, IL 60035-3593

ENERGY SUPPLY: CONTACT: JEAN WILL
 PHONE: (847) 816-5459
 COMPANY: COMED



| ITEM | UNIT | TOTAL |
|---|------|-------|
| MAINTENANCE OF EXISTING TRAFFIC SIGNAL INSTALLATION | EACH | 1 |
| FULL-ACTUATED CONTROLLER IN EXISTING CABINET, SPECIAL | EACH | 1 |
| DRILL EXISTING HANDHOLE | EACH | 1 |
| MODIFY EXISTING CONTROLLER CABINET | EACH | 1 |
| REMOVE EXISTING TRAFFIC SIGNAL EQUIPMENT | EACH | 1 |
| UNINTERRUPTIBLE POWER SUPPLY | EACH | 1 |
| REMOTE-CONTROLLED VIDEO SYSTEM | EACH | 1 |
| LAYER II (DATALINK) SWITCH | EACH | 1 |
| VIDEO ENCODER | EACH | 1 |
| CAMERA MOUNTING ASSEMBLY, SPECIAL | EACH | 1 |
| TERMINATE FIBER IN CABINET | EACH | 6 |
| ELECTRIC CABLE IN CONDUIT, SIGNAL NO. 14 3C | FOOT | 162 |
| ELECTRIC CABLE IN CONDUIT, COAXIAL | FOOT | 162 |
| ELECTRIC CABLE IN CONDUIT, 4/C #20, VIDEO | FOOT | 162 |

NOTE:
 THE TRAFFIC SIGNAL CONTROLLER EQUIPMENT FOR THIS PROJECT SHALL BE "ECONOLITE" TO MATCH THE EXISTING ADJACENT SYSTEM.

- CONSTRUCTION NOTES:**
- INSTALL UNINTERRUPTIBLE POWER SUPPLY (UPS)
 - ALL EXISTING CONFIRMATION BEACONS SHALL BE RETROFITTED WITH LED INDICATIONS. THIS WORK SHALL BE INCLUDED IN THE COST FOR THE PAY ITEM: UNINTERRUPTIBLE POWER SUPPLY.
 - POWDER COAT CAMERA MOUNTING ASSEMBLY TO MATCH EXISTING MAST ARM. POWDER COATING SHALL BE INCLUDED IN THE COST FOR THE PAY ITEM: CAMERA MOUNTING ASSEMBLY, SPECIAL.
 - THE TRAFFIC SIGNAL CONTROLLER SHALL BE NTCIP COMPATIBLE.
 - INSTALL NEW PTZ CAMERA TO NEW CAMERA MOUNTING ASSEMBLY, SPECIAL ON EXISTING SIGNAL MAST ARM.

THE FOLLOWING ITEMS SHALL BE REMOVED BY THE CONTRACTOR AND SHALL BE DISPOSED OF BY THEM OUTSIDE THE RIGHT-OF-WAY AT THEIR EXPENSE. THE SALVAGE VALUE OF THE REMOVED EQUIPMENT SHALL BE REFLECTED IN THE CONTRACT BID PRICE.

- 1 EACH CONTROLLER
- 1 EACH MASTER CONTROLLER

| | | | |
|---|---------------------|-----------------------|-----------|
| FILE NAME = | USER NAME = FBARISO | DESIGNED - ABR | REVISED - |
| Na:\CDD01\290407\Traffic\CAB.Laurel-First.dgn | | DRAWN - FPB / FCP | REVISED - |
| | | CHECKED - MJT | REVISED - |
| | | DATE - APRIL 30, 2010 | REVISED - |

STATE OF ILLINOIS
DEPARTMENT OF TRANSPORTATION

SCHEDULE OF QUANTITIES, CABLE PLAN, PHASE DESIGNATION DIAGRAM AND EMERGENCY VEHICLE PREEMPTION SEQUENCE
LAUREL AVENUE AND FIRST STREET

SCALE: NOT TO SCALE SHEET NO. -- OF -- SHEETS STA. -- TO STA. --

| | | | | |
|--------------------|----------------|--------|---------------------------|-----------|
| F.A.P. RTE. | SECTION | COUNTY | TOTAL SHEETS | SHEET NO. |
| | 06-00924-00-TL | LAKE | 76 | 34 |
| CONTRACT NO. 63485 | | | ILLINOIS FED. AID PROJECT | |