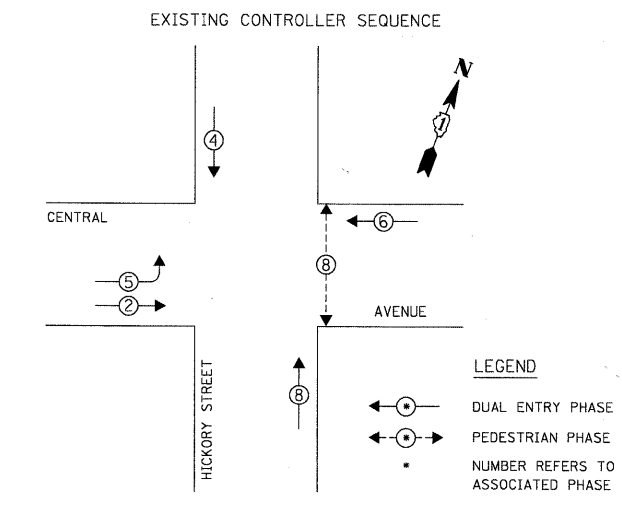


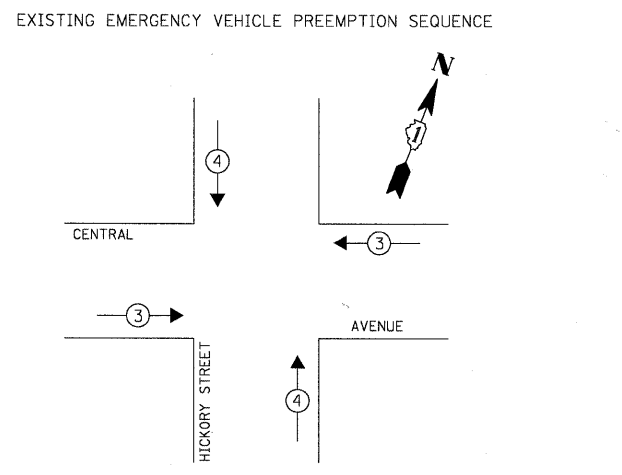
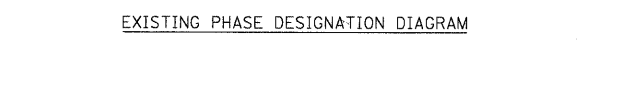
DATE: \_\_\_\_\_ BY: \_\_\_\_\_  
 SURVEYED: \_\_\_\_\_ PLOTTED: \_\_\_\_\_  
 PROFILE: \_\_\_\_\_ CHECKED: \_\_\_\_\_  
 NOTE BOOK: \_\_\_\_\_ NO. \_\_\_\_\_  
 STRUCTURE: \_\_\_\_\_ NOT THIS CIRCUIT

PLAN: \_\_\_\_\_  
 SURVEYED: \_\_\_\_\_ PLOTTED: \_\_\_\_\_  
 NOTE BOOK: \_\_\_\_\_ NO. \_\_\_\_\_  
 STRUCTURE: \_\_\_\_\_ NOT THIS CIRCUIT

CHRISTOPHER B. BURKE ENGINEERING LTD.  
 9575 West Higgins Road, Suite 600  
 Rosemont, Illinois 60018  
 (847) 823-0500



**LEGEND**  
 DUAL ENTRY PHASE  
 PEDESTRIAN PHASE  
 NUMBER REFERS TO ASSOCIATED PHASE

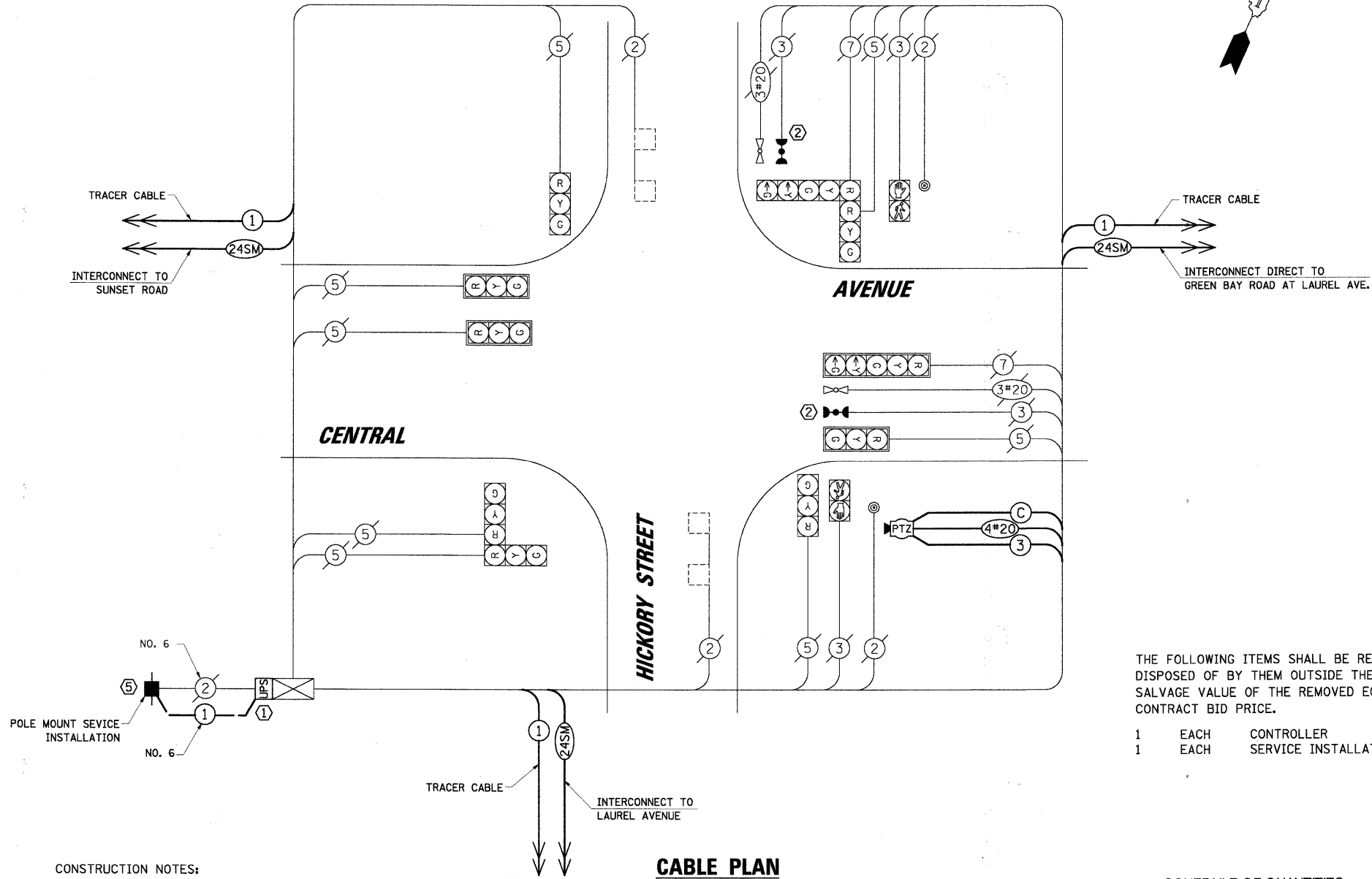


EXISTING EMERGENCY VEHICLE PREEMPTORS			
EMERGENCY VEHICLE PREEMPTOR	3	4	
MOVEMENT	← →	↓ ↑	

L.C.D.O.T. TRAFFIC SIGNAL INSTALLATION ELECTRICAL SERVICE REQUIREMENTS					TOTAL WATTAGE
TYPE	NO. OF LAMPS	WATTAGE X INCAND.	LED	% OPERATION	
SIGNAL (RED)	10		10	0.50	50.0
(YELLOW)	10		19	0.10	19.0
(GREEN)	10		11	0.40	44.0
ARROW	4		9	0.10	3.6
PED. SIGNAL	2		9	1.00	18.0
CONTROLLER	1		100	1.00	100.0
LUMINAIRE	-		250	0.50	-
L.E.D. ST. NAME SIGN	-		64	0.50	-
VIDEO SYSTEM	1		150	1.00	150.0
BATTERY BACKUP	1		25	1.00	25.0

ENERGY COSTS TO: TOTAL = 409.6

**CITY OF HIGHLAND PARK**  
 1707 ST. JOHNS AVENUE  
 HIGHLAND PARK, IL 60035-3593  
 ENERGY SUPPLY: CONTACT: JEAN WILL  
 PHONE: (847) 816-5459  
 COMPANY: COMED



- CONSTRUCTION NOTES:**
- INSTALL UNINTERRUPTIBLE POWER SUPPLY (UPS)
  - ALL EXISTING CONFIRMATION BEACONS SHALL BE RETROFITTED WITH LED INDICATIONS. THIS WORK SHALL BE INCLUDED IN THE COST FOR THE PAY ITEM: UNINTERRUPTIBLE POWER SUPPLY.
  - POWDER COAT CAMERA MOUNTING ASSEMBLY TO MATCH EXISTING MAST ARM. POWDER COATING SHALL BE INCLUDED IN THE COST FOR THE PAY ITEM: CAMERA MOUNTING ASSEMBLY, SPECIAL.
  - THE TRAFFIC SIGNAL CONTROLLER SHALL BE NTCIP COMPATIBLE.
  - INSTALL NEW POLE MOUNT SERVICE INSTALLTION. INSTALL SERVICE GROUND CABLE IN EXISTING CONDUIT.
  - INSTALL NEW PTZ CAMERA TO NEW CAMERA MOUNTING ASSEMBLY, SPECIAL ON EXISTING SIGNAL MAST ARM.

NOTE:  
 THE TRAFFIC SIGNAL CONTROLLER EQUIPMENT FOR THIS PROJECT SHALL BE "EAGLE" TO MATCH THE EXISTING ADJACENT SYSTEM.

THE FOLLOWING ITEMS SHALL BE REMOVED BY THE CONTRACTOR AND SHALL BE DISPOSED OF BY THEM OUTSIDE THE RIGHT-OF-WAY AT THEIR EXPENSE. THE SALVAGE VALUE OF THE REMOVED EQUIPMENT SHALL BE REFLECTED IN THE CONTRACT BID PRICE.

1	EACH	CONTROLLER
1	EACH	SERVICE INSTALLATION

SCHEDULE OF QUANTITIES		
ITEM	UNIT	TOTAL
MAINTENANCE OF EXISTING TRAFFIC SIGNAL INSTALLATION	EACH	1
FULL-ACTUATED CONTROLLER IN EXISTING CABINET, SPECIAL	EACH	1
DRILL EXISTING HANDHOLE	EACH	3
MODIFY EXISTING CONTROLLER CABINET	EACH	1
REMOVE EXISTING TRAFFIC SIGNAL EQUIPMENT	EACH	1
SERVICE INSTALLATION - POLE MOUNTED	EACH	1
UNINTERRUPTIBLE POWER SUPPLY	EACH	1
REMOTE-CONTROLLED VIDEO SYSTEM	EACH	1
LAYER II (DATALINK) SWITCH	EACH	1
VIDEO ENCODER	EACH	1
CAMERA MOUNTING ASSEMBLY, SPECIAL	EACH	1
ELECTRIC CABLE IN CONDUIT, GROUNDING NO. 6 1C	FOOT	110
ELECTRIC CABLE IN CONDUIT, SIGNAL NO. 14 3C	FOOT	158
ELECTRIC CABLE IN CONDUIT, COAXIAL	FOOT	158
ELECTRIC CABLE IN CONDUIT, 4/C # 20, VIDEO	FOOT	158