

PROJECT ENGINEER: REBECCA MARRUFFO  
SQUAD LEADER: BRAD CUSHMAN (815)-284-5996

F.A.P. RTE.	SECTION	COUNTY	TOTAL SHEETS	SHEET NO.
742	37R-4	OGLE	867	1
FED. ROAD DIST. NO.	ILLINOIS	CONTRACT NO. 64E17		

\*867+1=868

**STATE OF ILLINOIS**  
**DEPARTMENT OF TRANSPORTATION**  
**DIVISION OF HIGHWAYS**

**PROPOSED  
HIGHWAY PLANS**

**FAP ROUTE 742 (IL 2)**  
**SECTION 37R-4**  
**PROJECT ACF-0742(131)**  
**OGLE COUNTY**

**C-92-028-10**

**INDEX**

SEE SHEET 2

**STATE STANDARDS**

SEE SHEET 2

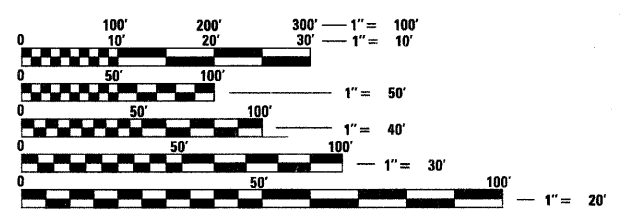
**LEAF RIVER BRIDGE OMISSION**  
STA. 912 + 56.80 TO STA. 915 + 88.99

**SILVER CREEK BRIDGE OMISSION**  
STA. 769 + 20.02 TO STA. 770 + 76.29

**MUD CREEK BRIDGE OMISSION**  
STA. 720 + 40.12 TO STA. 722 + 21.58

**IMPROVEMENT BEGINS**  
STA. 680 + 00

**IMPROVEMENT ENDS**  
STA. 1068 + 00

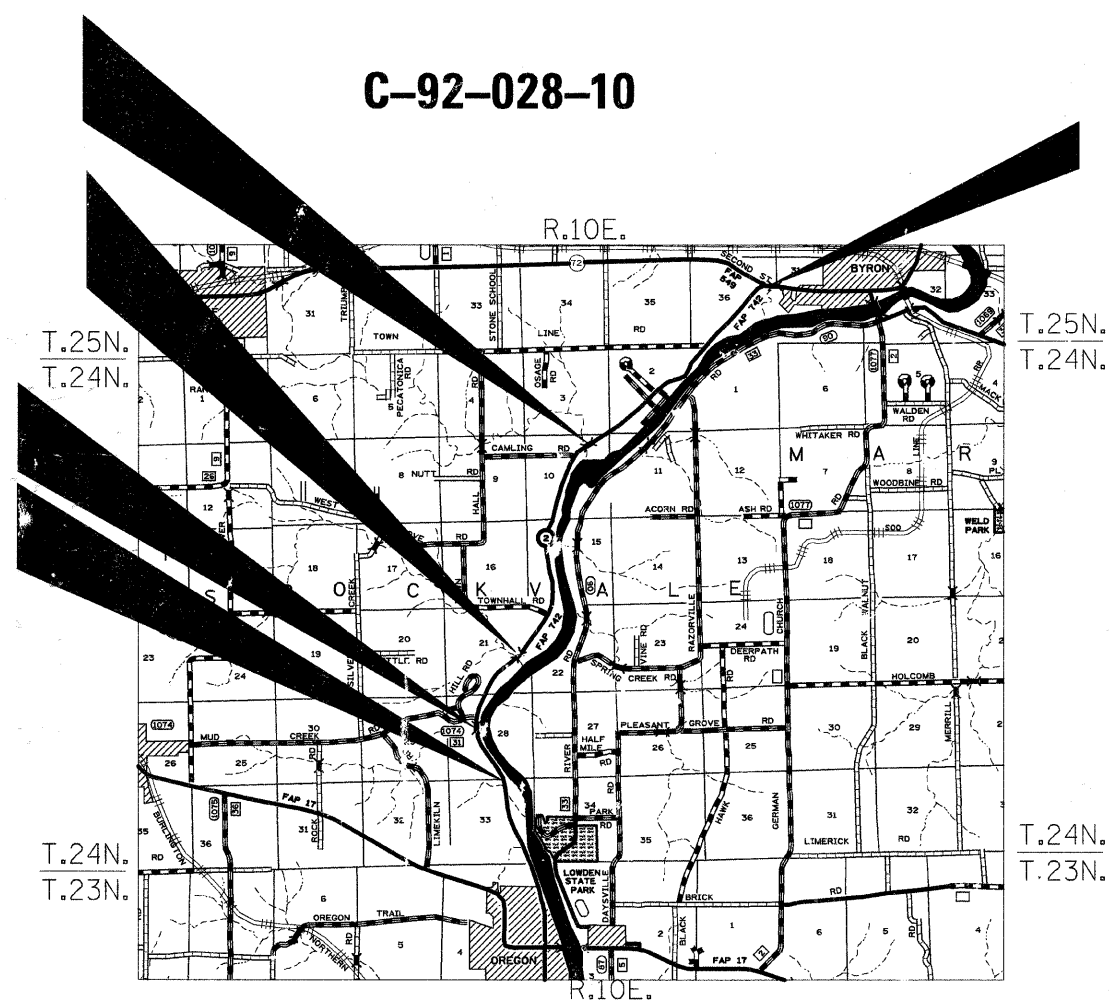


FULL SIZE PLANS HAVE BEEN PREPARED USING STANDARD ENGINEERING SCALES. REDUCED SIZED PLANS WILL NOT CONFORM TO STANDARD SCALES. IN MAKING MEASUREMENTS ON REDUCED PLANS, THE ABOVE SCALES MAY BE USED.

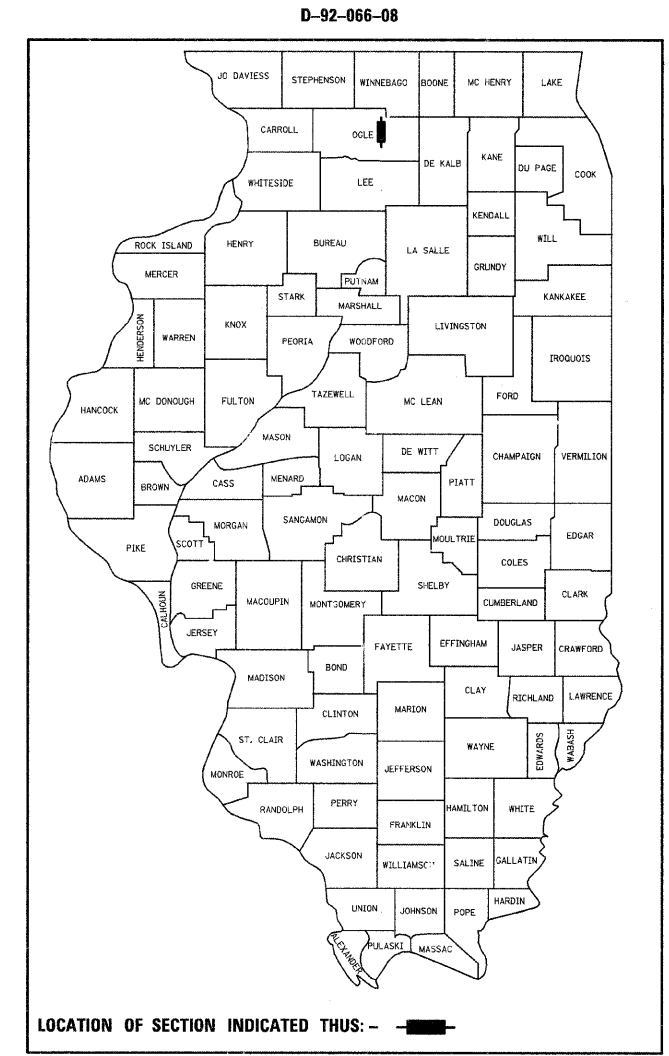
**DESIGN DESIGNATION**  
965 (15) OTHER PRINCIPAL ARTERIAL 5.51 (PCC-20)

J.U.L.I.E.  
JOINT UTILITY LOCATION INFORMATION FOR EXCAVATION  
1-800-892-0123  
OR 811

**CONTRACT NO. 64E17**



ROCKVALE TOWNSHIP, SECTION 1,2,3,10,11,15,21,22,28,33  
BYRON TOWNSHIP, SECTION 36  
GROSS LENGTH OF PROJECT = 38,800 LIN. FT. = 7.35 MILES  
NET LENGTH OF PROJECT = 38,129 LIN. FT. = 7.22 MILES



STATE OF ILLINOIS  
DEPARTMENT OF TRANSPORTATION  
DIVISION OF HIGHWAYS

SUBMITTED MARCH 31 20 10

George F. Ryan  
DEPUTY DIRECTOR OF HIGHWAYS, REGION ENGINEER

June 05 20 10  
Scott E. Still, PE  
Acting ENGINEER OF DESIGN AND ENVIRONMENT

June 05 20 10  
Christine M. Reed  
DIRECTOR OF HIGHWAYS, CHIEF ENGINEER

**PRINTED BY THE AUTHORITY  
OF THE STATE OF ILLINOIS**