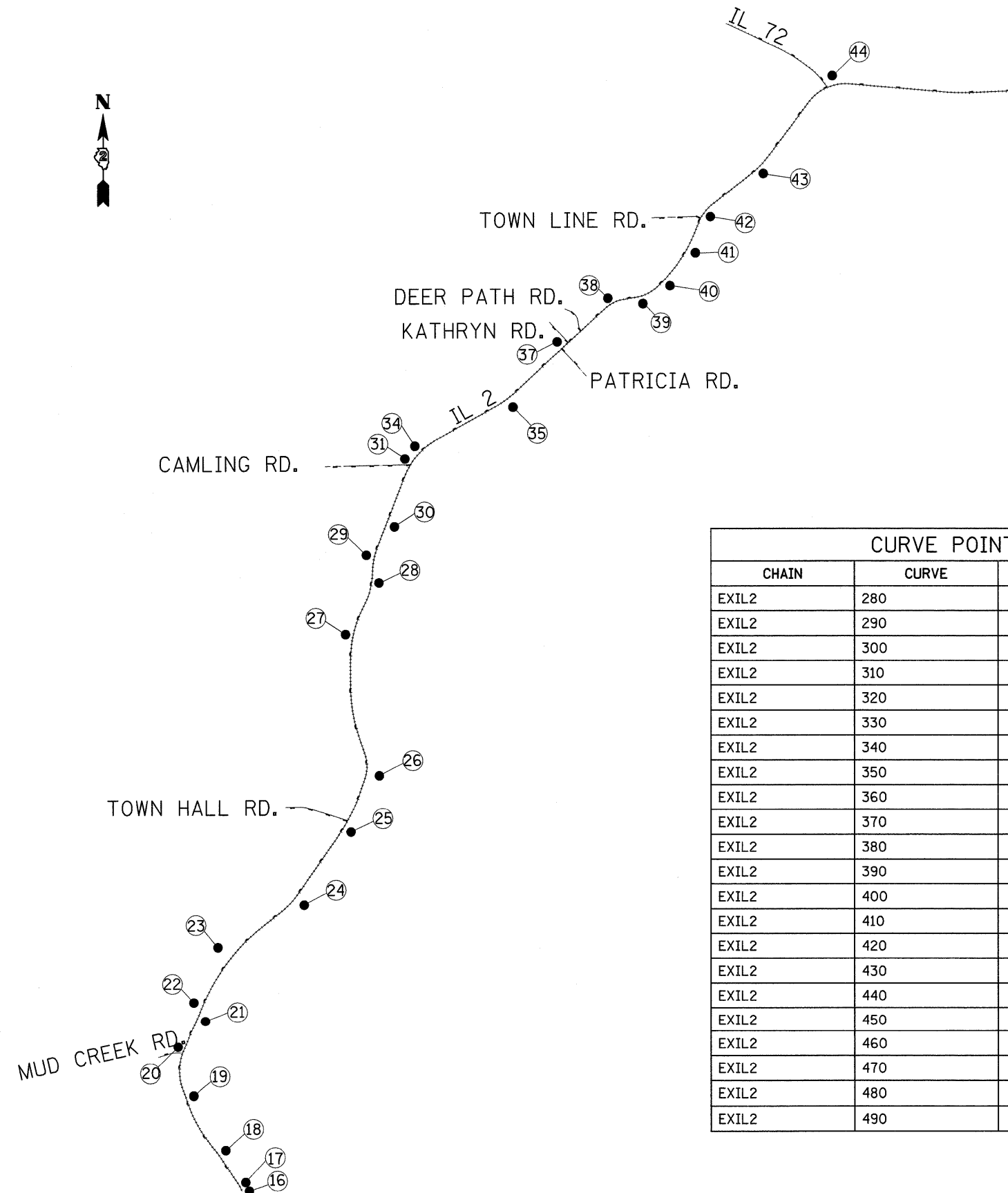


HORIZONTAL & VERTICAL CONTROL



Chain EXIL2 contains:
 60 CUR 200 CUR 210 CUR 220 CUR 230 CUR 240 CUR 250 CUR 260 CUR 270 CUR 280 CUR-
 290 CUR 300 CUR 310 CUR 320 CUR 330 CUR 340 CUR 350 CUR 360 CUR 370 CUR 380 CU-
 R 390 CUR 400 CUR 410 CUR 420 CUR 430 CUR 440 CUR 450 CUR 460 CUR 470 CUR 480 C-
 UR 490 114

Point 60 N 1,945,719.68 E 726,654.57 Sta 538+74.25
 Course from 60 to PC 200 0° 53' 05.31" Dist 5,814.61'

Curve Data

Curve 280
 P.I. Station 694+00.88 N 1,960,455.90 E 723,436.15
 Delta = 3° 59' 37.26" (LT)
 Degree = 0° 50' 00.00"
 Tangent = 239.72'
 Length = 479.24'
 Radius = 6,875.50'
 External = 4.18'
 Long Chord = 479.15'
 Mid. Ord. = 4.18'
 P.C. Station 691+61.16 N 1,960,257.71 E 723,571.01
 P.T. Station 696+40.40 N 1,960,644.21 E 723,287.81
 C.C. N 1,956,389.59 E 717,886.82

Course from PT 280 to PC 290 N 38° 13' 45.06" W Dist 160.77'

Curve Data

Curve 290
 P.I. Station 703+91.54 N 1,961,234.25 E 722,823.00
 Delta = 17° 34' 18.57" (RT)
 Degree = 1° 30' 00.00"
 Tangent = 590.36'
 Length = 1,171.46'
 Radius = 3,819.72'
 External = 45.35'
 Long Chord = 1,166.87'
 Mid. Ord. = 44.82'
 P.C. Station 698+01.18 N 1,960,770.50 E 723,188.32
 P.T. Station 709+72.63 N 1,961,786.66 E 722,614.73
 C.C. N 1,963,134.17 E 726,188.87

Course from PT 290 to PC 300 N 20° 39' 26.50" W Dist 463.00'

Curve Data

Curve 300
 P.I. Station 720+00.87 N 1,962,748.79 E 722,251.99
 Delta = 43° 04' 10.69" (RT)
 Degree = 3° 59' 59.99"
 Tangent = 565.24'
 Length = 1,076.74'
 Radius = 1,432.40'
 External = 107.49'
 Long Chord = 1,051.57'
 Mid. Ord. = 99.99'
 P.C. Station 714+35.63 N 1,962,219.89 E 722,451.40
 P.T. Station 725+12.37 N 1,963,271.33 E 722,467.50
 C.C. N 1,962,725.21 E 723,791.70

Course from PT 300 to PC 310 N 22° 24' 44.19" E Dist 1,375.49'

Curve Data

CURVE POINT NUMBERS					
CHAIN	CURVE	PI	CC	PC	PT
EXIL2	280	280	281	282	283
EXIL2	290	290	291	292	293
EXIL2	300	300	301	302	303
EXIL2	310	310	311	312	313
EXIL2	320	320	321	322	323
EXIL2	330	330	331	332	333
EXIL2	340	340	341	342	343
EXIL2	350	350	351	352	353
EXIL2	360	360	361	362	363
EXIL2	370	370	371	372	373
EXIL2	380	380	381	382	383
EXIL2	390	390	391	392	393
EXIL2	400	400	401	402	403
EXIL2	410	410	411	412	413
EXIL2	420	420	421	422	423
EXIL2	430	430	431	432	433
EXIL2	440	440	441	442	443
EXIL2	450	450	451	452	453
EXIL2	460	460	461	462	463
EXIL2	470	470	471	472	473
EXIL2	480	480	481	482	483
EXIL2	490	490	491	492	493

FILE NAME =	USER NAME = grantpm	DESIGNED -	REVISED -	STATE OF ILLINOIS DEPARTMENT OF TRANSPORTATION	HORIZONTAL & VERTICAL CONTROL	F.A.P RTE.	SECTION	COUNTY	TOTAL SHEETS	SHEET NO.
c:\pwork\pwidot\GRANTPM\dms31213\d06628hvc.dgn	PLOT SCALE = 50.0000' / IN.	DRAWN -	REVISED -			742	37R-4	OGLE	867	77
PLOT DATE = Tue Mar 30 11:44:26 2010	DATE -	CHECKED -	REVISED -			CONTRACT NO. 64E17		FED. ROAD DIST. NO. ILLINOIS FED. AID PROJECT		
				SCALE:		SHEET NO. OF SHEETS		STA. TO STA.		