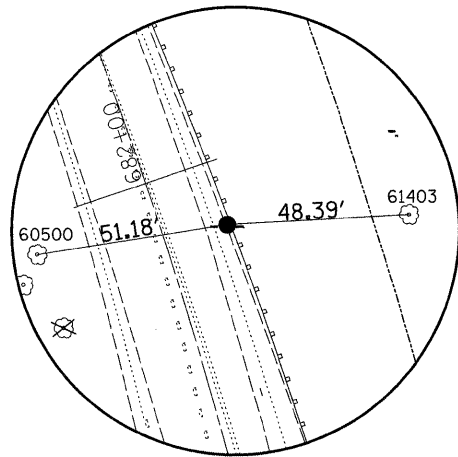
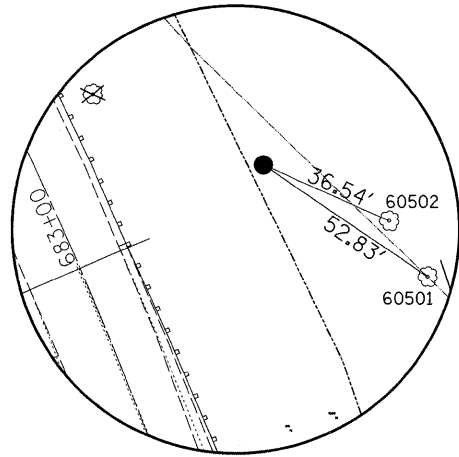


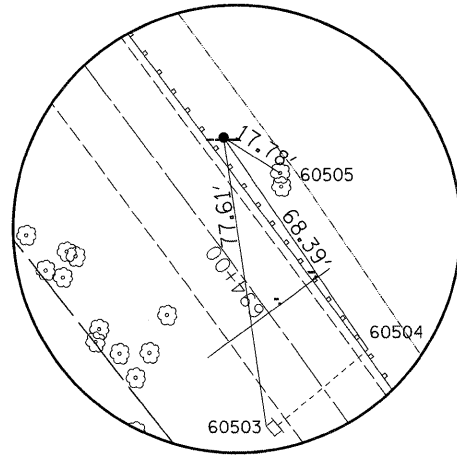
HORIZONTAL & VERTICAL CONTROL



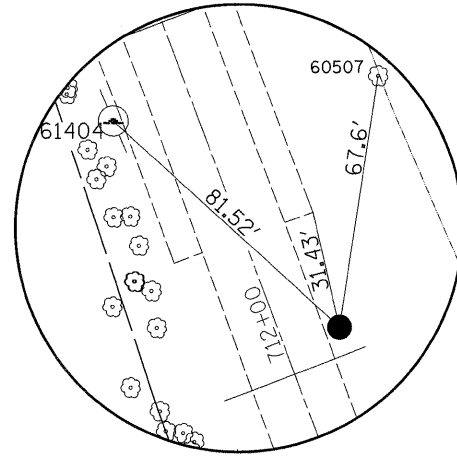
HORIZONTAL CONTROL
POINT NO. 16



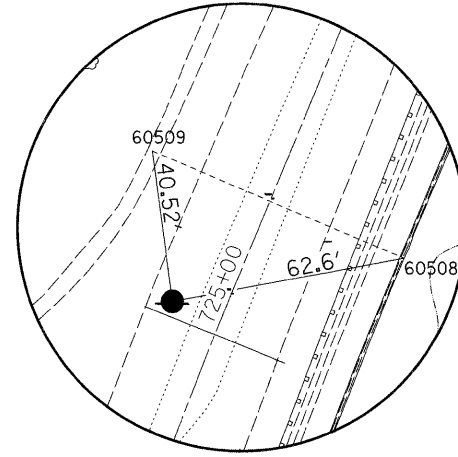
HORIZONTAL CONTROL
POINT NO. 17



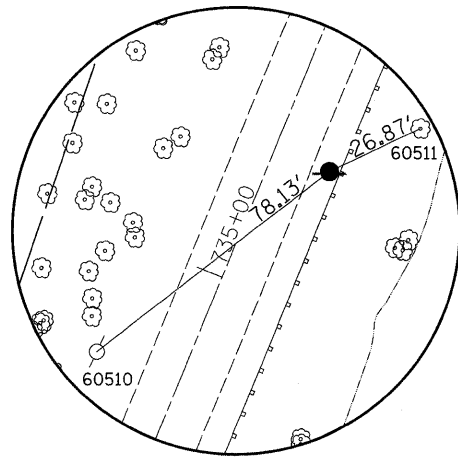
HORIZONTAL CONTROL
POINT NO. 18



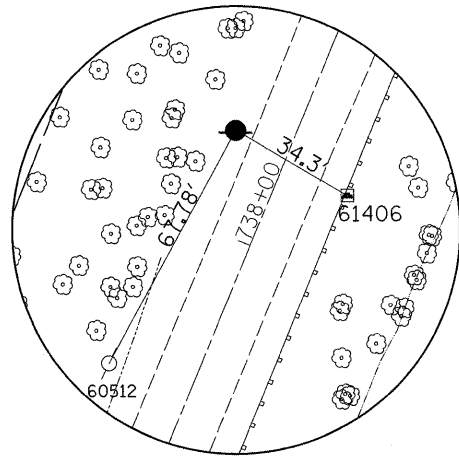
HORIZONTAL CONTROL
POINT NO. 19



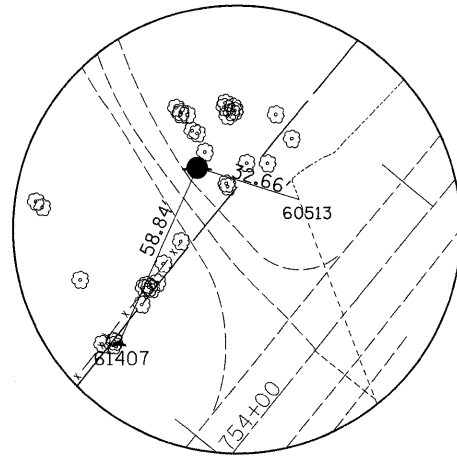
HORIZONTAL CONTROL
POINT NO. 20



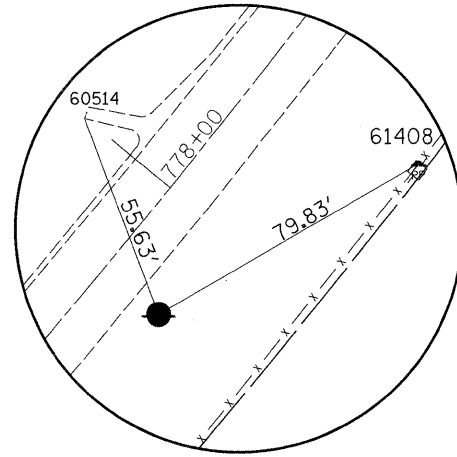
HORIZONTAL CONTROL
POINT NO. 21



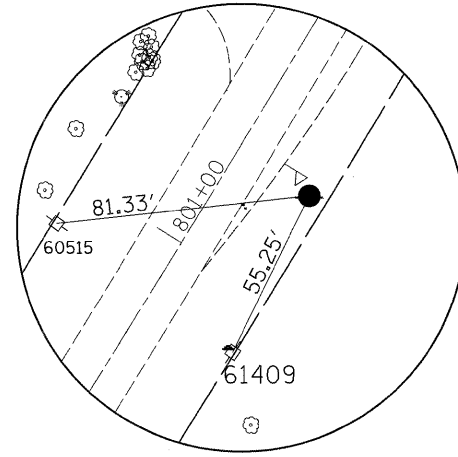
HORIZONTAL CONTROL
POINT NO. 22



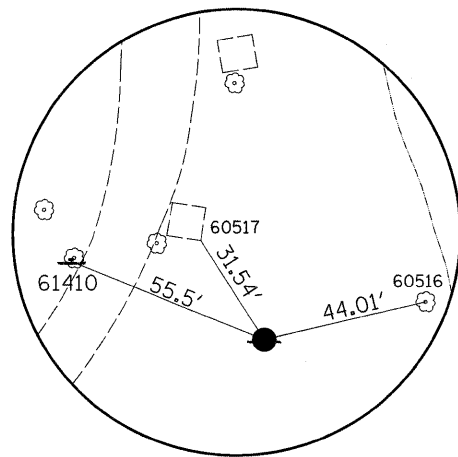
HORIZONTAL CONTROL
POINT NO. 23



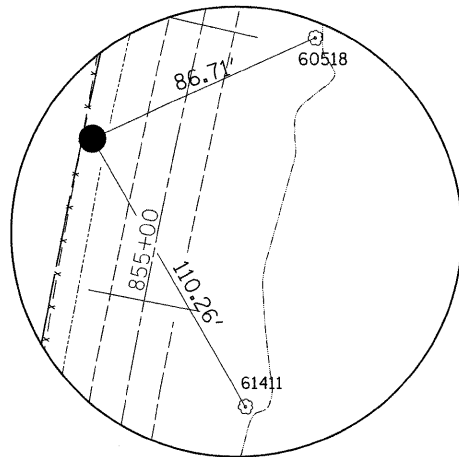
HORIZONTAL CONTROL
POINT NO. 24



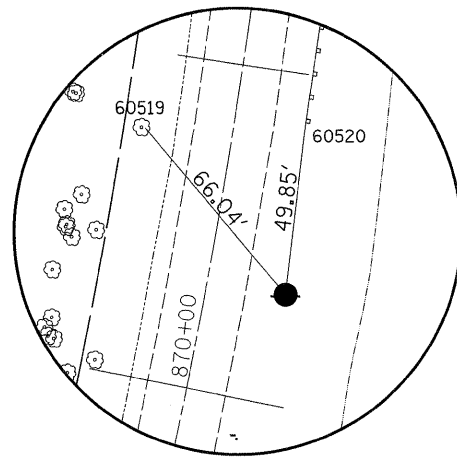
HORIZONTAL CONTROL
POINT NO. 25



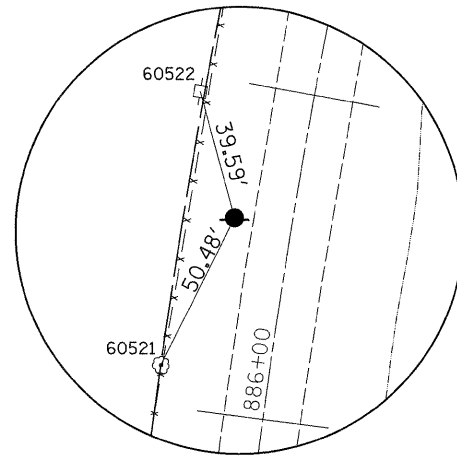
HORIZONTAL CONTROL
POINT NO. 26



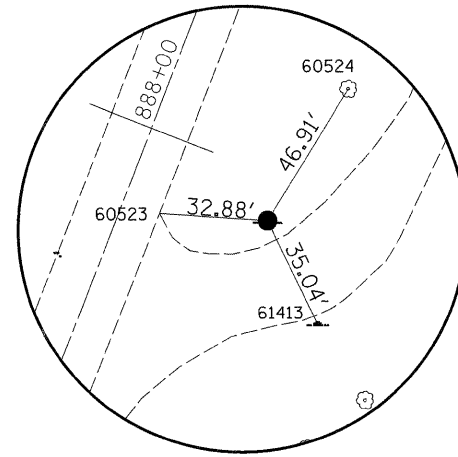
HORIZONTAL CONTROL
POINT NO. 27



HORIZONTAL CONTROL
POINT NO. 28



HORIZONTAL CONTROL
POINT NO. 29



HORIZONTAL CONTROL
POINT NO. 30

FILE NAME =	USER NAME = grantpm	DESIGNED -	REVISED -	STATE OF ILLINOIS DEPARTMENT OF TRANSPORTATION	HORIZONTAL & VERTICAL CONTROL	F.A.P. RTE.	SECTION	COUNTY	TOTAL SHEETS	SHEET NO.	
ct:\pw_work\PIWIDOT\GRANTPM\dms31213\206608hvc.dgn		DRAWN -	REVISED -			742	37R-4	OGLE	867	85	
	PLOT SCALE = 50.0000' / IN.	CHECKED -	REVISED -			SCALE:		SHEET NO. OF SHEETS		STA. TO STA.	
	PLOT DATE = Tue Mar 30 11:44:31 2010	DATE -	REVISED -			FED. ROAD DIST. NO.		ILLINOIS FED. AID PROJECT		CONTRACT NO. 64E17	