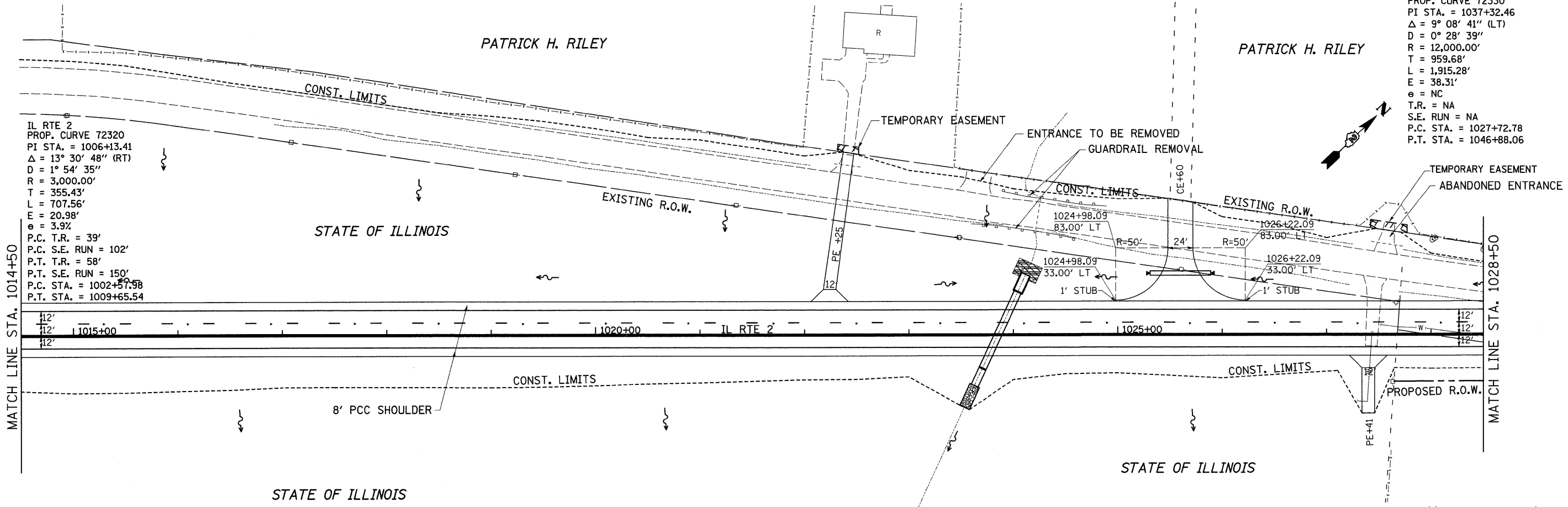


PLAN	SURVEYED	DATE
	PLOTTED	
	CHECKED	
	BY	
	NO.	

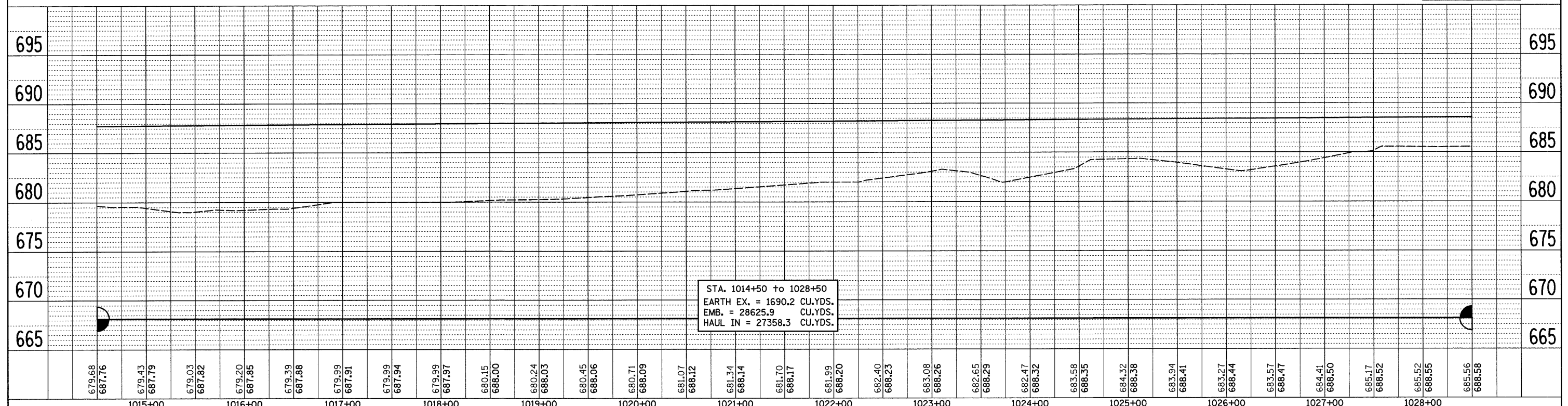
PROFILE	SURVEYED	DATE
	PLOTTED	
	CHECKED	
	BY	
	NO.	

IL RTE 2
 PROP. CURVE 72330
 PI STA. = 1037+32.46
 $\Delta = 9^{\circ} 08' 41''$ (LT)
 $D = 0^{\circ} 28' 39''$
 $R = 12,000.00'$
 $T = 959.68'$
 $L = 1,915.28'$
 $E = 38.31'$
 $e = NC$
 $T.R. = NA$
 $S.E. RUN = NA$
 $P.C. STA. = 1027+72.78$
 $P.T. STA. = 1046+88.06$

IL RTE 2
 PROP. CURVE 72320
 PI STA. = 1006+13.41
 $\Delta = 13^{\circ} 30' 48''$ (RT)
 $D = 1^{\circ} 54' 35''$
 $R = 3,000.00'$
 $T = 355.43'$
 $L = 707.56'$
 $E = 20.98'$
 $e = 3.9\%$
 $P.C. T.R. = 39'$
 $P.C. S.E. RUN = 102'$
 $P.T. T.R. = 58'$
 $P.T. S.E. RUN = 150'$
 $P.C. STA. = 1002+57.98$
 $P.T. STA. = 1009+65.54$



X - TREE REMOVAL
 0 50' 100'



FILE NAME =	USER NAME = grantpm	DESIGNED -	REVISED -	STATE OF ILLINOIS DEPARTMENT OF TRANSPORTATION	IL 2	SCALE:	SHEET NO. OF SHEETS	STA. TO STA.	F.A.P. RTE. NO. 742	SECTION 37R-4	COUNTY OGLE	TOTAL SHEETS 867	SHEET NO. 113
CONTRACT NO. 64E17	ILLINOIS FED. AID PROJECT												
PLOT SCALE = 50.0000' / IN.	CHECKED -	REVISED -											
PLOT DATE = Tue Mar 30 11:40:39 2010	DATE -	REVISED -											