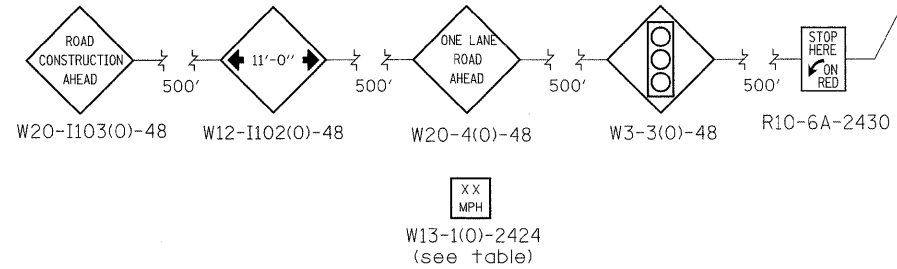
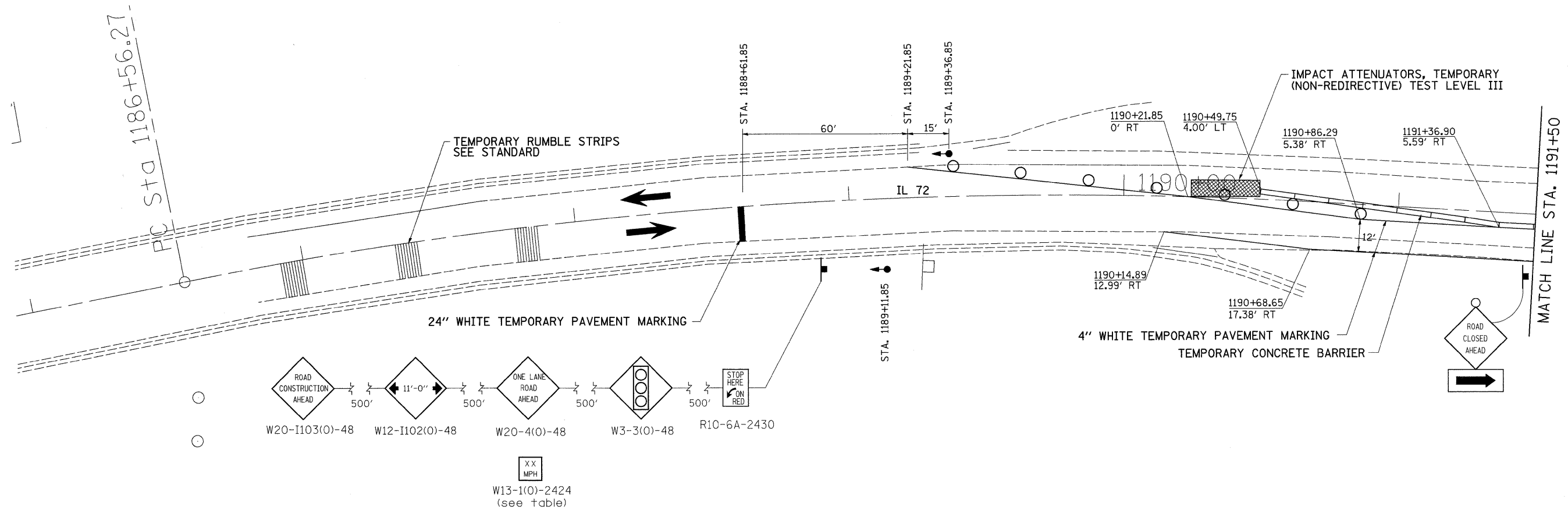
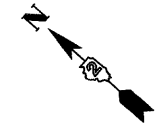
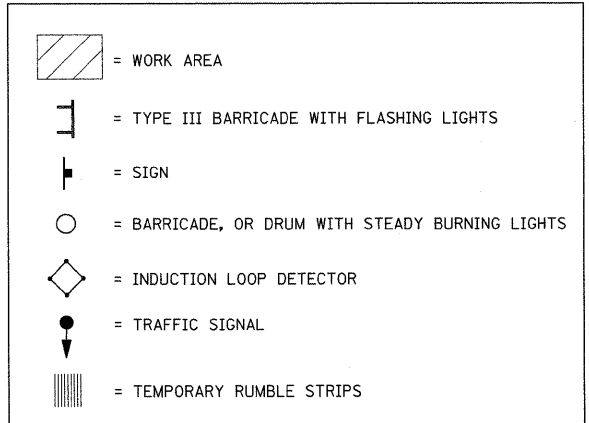


# STAGE 1



### STAGE 1 NOTES

- EXISTING RAISED ISLAND AT (SW QUAD) OF IL 72 WILL NEED TO BE REMOVED AND FILLED IN WITH INCIDENTAL HMA SURFACING PRIOR TO SETUP STAGE 1-USING STD. 701201.
- USE STANDARD 701321. SEE STANDARDS FOR ADDITIONAL SIGNING AND DEVICES NOT SHOWN IN DETAILS.
- REMOVAL OF GUARDRAIL @ LT STA. 1063+58 TO 1068+26.
- REMOVAL OF EXISTING PAVEMENT FROM NE TO QUAD IL 72 TO MILL CREEK BRIDGE UP TO THE STAGE CONSTRUCTION LINE.
- CONSTRUCT SUB-BASE GRANULAR MATERIAL, TYPE "A"
- CONSTRUCT PCC PAVEMENT & (JOINTED) & PCC SHOULDERS
- INSTALL STEEL PLATE BEAM GUARDRAIL, TYPE A LT STA. 1061+68 TO 1068+14.



FILE NAME =	USER NAME = grantpm	DESIGNED -	REVISED -	<b>STATE OF ILLINOIS DEPARTMENT OF TRANSPORTATION</b>	<b>STAGE 1</b>	F.A. RTE.	SECTION	COUNTY	TOTAL SHEETS	SHEET NO.	
cr:\pwork\pwidot\GRANTPM\dms31213\06628stg.dgn	PLOT SCALE = 20.0000' / IN.	DRAWN -	REVISED -			742	37R-4	OGLE	867	153	
PLOT DATE = Tue Mar 30 11:22:26 2010	DATE -	CHECKED -	REVISED -			CONTRACT NO. 64E17					
		DATE -	REVISED -			ILLINOIS FED. AID PROJECT					