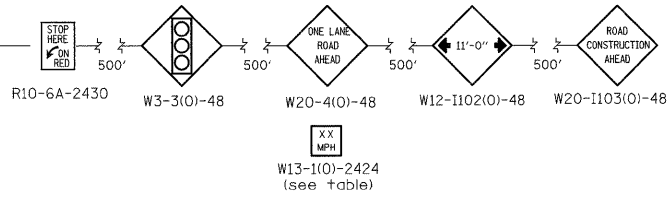
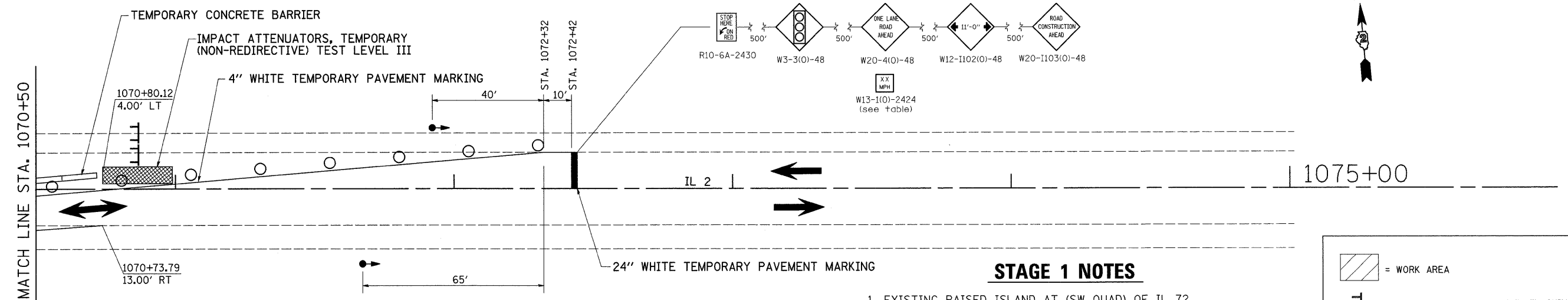
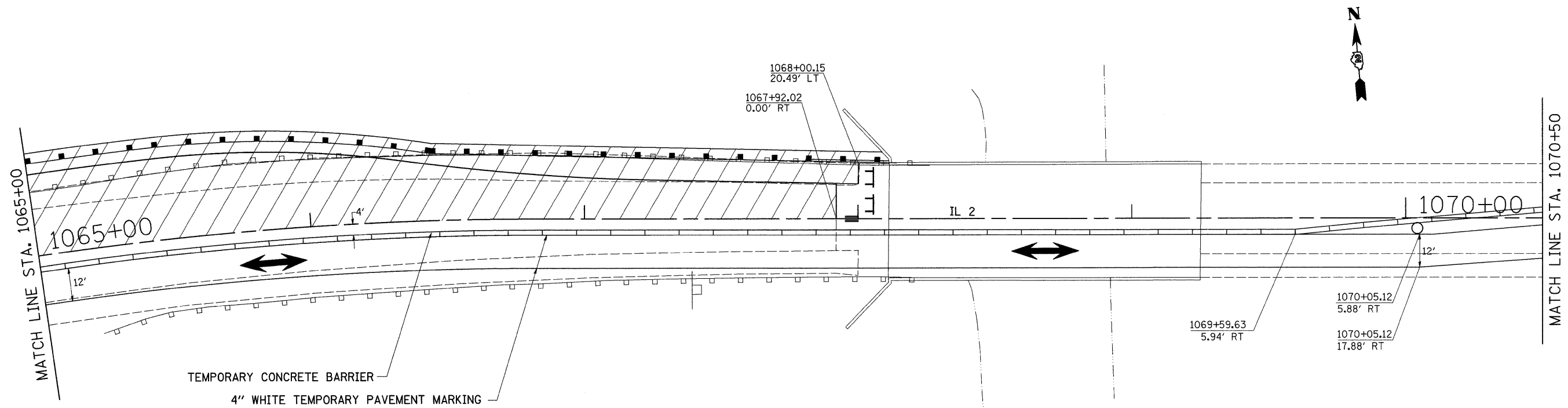


# STAGE 1



### STAGE 1 NOTES

- EXISTING RAISED ISLAND AT (SW QUAD) OF IL 72 WILL NEED TO BE REMOVED AND FILLED IN WITH INCIDENTAL HMA SURFACING PRIOR TO SETUP STAGE 1-USING STD. 701201.
- USE STANDARD 701321. SEE STANDARDS FOR ADDITIONAL SIGNING AND DEVICES NOT SHOWN IN DETAILS.
- REMOVAL OF GUARDRAIL @ LT STA.
- REMOVAL OF EXISTING PAVEMENT FROM NE TO QUAD IL 72 TO MILL CREEK BRIDGE UP TO THE STAGE CONSTRUCTION LINE.
- CONSTRUCT SUB-BASE GRANULAR MATERIAL, TYPE "A"
- CONSTRUCT PCC PAVEMENT & (JOINTED) & PCC SHOULDERS
- INSTALL STEEL PLATE BEAM GUARDRAIL, TYPE A RT.

	= WORK AREA
	= TYPE III BARRICADE WITH FLASHING LIGHTS
	= SIGN
	= BARRICADE, OR DRUM WITH STEADY BURNING LIGHTS
	= INDUCTION LOOP DETECTOR
	= TRAFFIC SIGNAL
	= TEMPORARY RUMBLE STRIPS

FILE NAME =	USER NAME = grantpm	DESIGNED -	REVISED -	<b>STATE OF ILLINOIS DEPARTMENT OF TRANSPORTATION</b>	<b>STAGE 1</b>	F.A. RTE.	SECTION	COUNTY	TOTAL SHEETS	SHEET NO.
ca:\pwwork\VPWIDOT\GRANTPM\dms31213\d06628stg.dgn	PLOT SCALE = 20.0000' / IN.	DRAWN -	REVISED -			742	3TR-4	OGLE	867	155
	PLOT DATE = Tue Mar 30 11:22:27 2010	CHECKED -	REVISED -			SCALE: SHEET NO. OF SHEETS STA. TO STA.		CONTRACT NO. 64E17		
		DATE -	REVISED -			ILLINOIS FED. AID PROJECT				