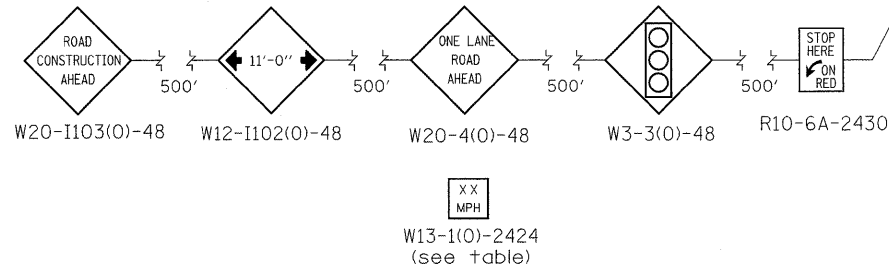
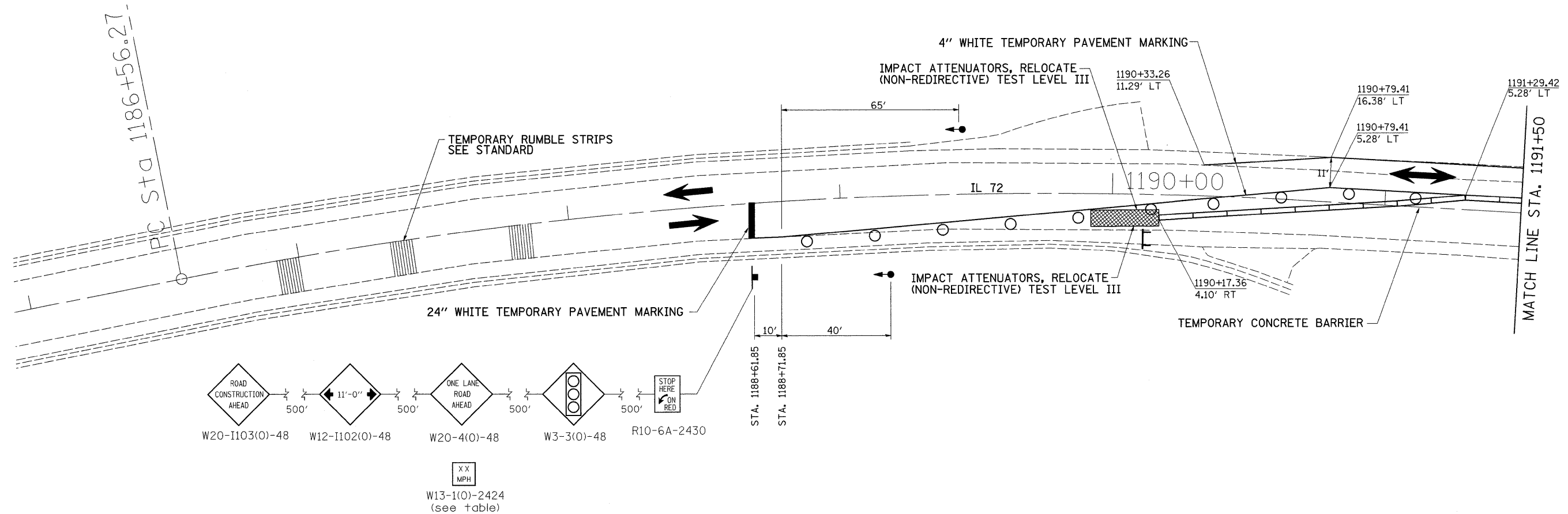
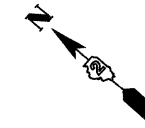


STAGE 2



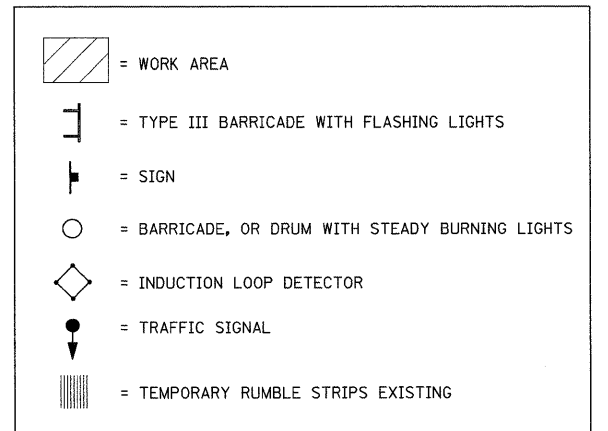
STAGE 2 NOTES

1. USE STANDARD 701321. SEE STANDARDS FOR ADDITIONAL SIGNING AND DEVICES NOT SHOWN IN DETAILS.
2. REMOVAL OF GUARDRAIL @ RT STA. 1065+20 TO STA. 1068+20.
3. REMOVAL OF EXISTING PAVEMENT FROM NW QUAD IL 72 TO MILL CREEK BRIDGE.
4. CONSTRUCT SUB-BASE GRANULAR MATERIAL, TYPE "A"
5. CONSTRUCT PCC PAVEMENT (JOINTED) & PCC SHOULDERS
6. INSTALL STEEL PLATE BEAM GUARDRAIL, TYPE A RT STA. 1064+68 - 1068+13.

* ACCESS FOR RESIDENTS ON IL 2 SOUTH TOWARD OREGON WILL BE CLOSED FOR THIS STAGE.

STAGE 3 NOTES

1. REMOVAL OF ALL TEMPORARY PAINT PAVEMENT MARKINGS PLACED IN STAGE 2 (WORKZONE PAVEMENT MARKING REMOVAL)
2. PLACEMENT OF FINAL PAVEMENT MARKINGS IN THE RECONSTRUCTION AREA (URETHANE PAVEMENT MARKINGS) AND PREVIOUS CONFLICTING PAVEMENT MARKINGS REMOVED IN STAGE 1.



| | | | | | | | | | | | | |
|--|---------------------|------------|-----------|---|---------------------------|-----------|------|-----------|---------|--------|--------------|-----------|
| FILE NAME = | USER NAME = grantpm | DESIGNED - | REVISED - | STATE OF ILLINOIS DEPARTMENT OF TRANSPORTATION | STAGE 2 | | | F.A. RTE. | SECTION | COUNTY | TOTAL SHEETS | SHEET NO. |
| ei:\pwork\PIWIDOT\GRANTPM\dms31213\d06608stg.dgn | | DRAWN - | REVISED - | | 742 | 37R-4 | OGLE | 867 | 156 | | | |
| PLOT SCALE = 20.0000' / IN. | | CHECKED - | REVISED - | | CONTRACT NO. 64E17 | | | | | | | |
| PLOT DATE = Tue Mar 30 11:22:28 2010 | | DATE - | REVISED - | | ILLINOIS FED. AID PROJECT | | | | | | | |
| | | | | SCALE: | SHEET NO. | OF SHEETS | STA. | TO STA. | | | | |