

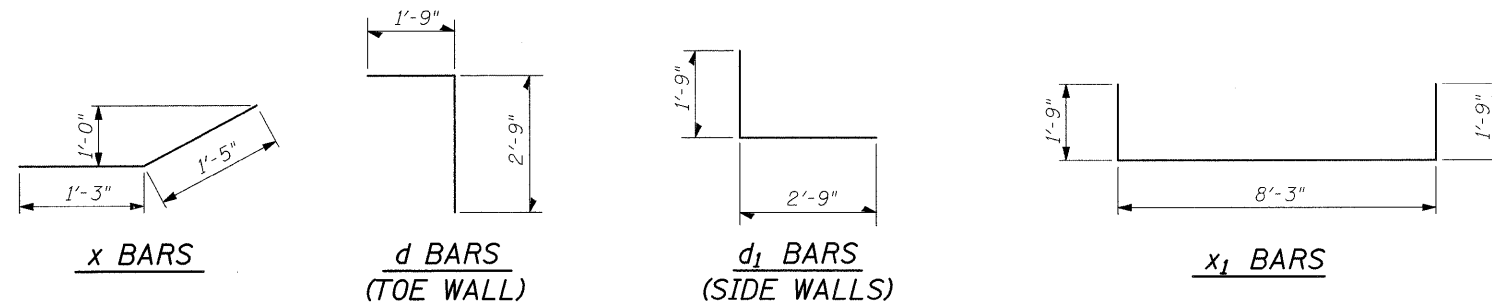
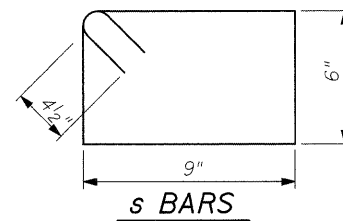
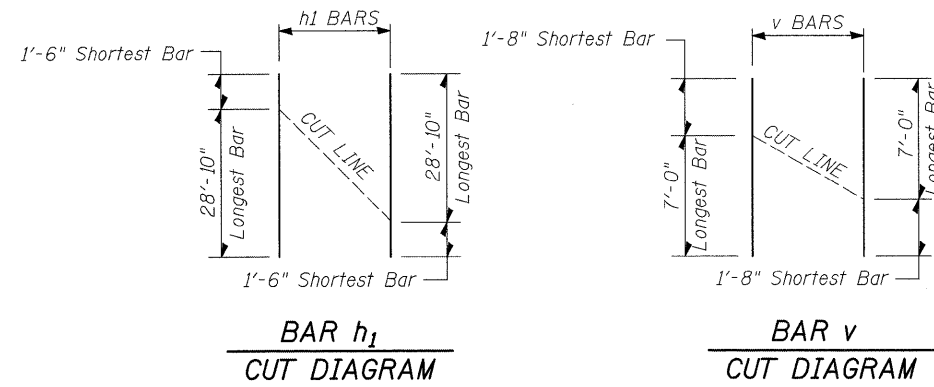
BOX CULVERT END SECTION CULVERT NO. 3

STA. 804 + 56

BILL OF MATERIALS
(For Information Only)

MINIMUM BAR LAP

#4 = 1'-8"
#5 = 2'-2"



BAR	NO.	SIZE	LENGTH	SHAPE
a	76	#5	8'-3"	—
d	9	#5	4'-6"	└
d ₁	70	#5	4'-6"	└
h	18	#4	30'-1"	—
h ₁	8	#4	30'-8"	—
h ₂	4	#6	29'-10"	—
h ₃	7	#6	8'-3"	—
h ₄	4	#4	4'-4"	—
s	9	#4	3'-3"	└
v	27	#4	9'-9"	—
x	9	#4	2'-8"	—
x ₁	4	#4	11'-11"	└
DESCRIPTION			UNIT	QUANTITY
Concrete Box Culverts			Cu. Yd.	14.8
Reinforcement Bars			LBS	2,071

GENERAL NOTES

This work shall be paid for at the contract unit price per Each for Culvert End Section No. 3.

This work shall be done in accordance with the applicable portion of sections 503, 508, and 540 of the Standard Specifications.

Exposed edges shall be beveled $\frac{3}{4}$ ".

The contract unit price "EACH" for Culvert End Section No. 3 shall include the Reinforcement Bars, and Concrete Box Culverts.

The Contractor has the option of using precast construction for the end section.

The cost of earth excavation, where required, and necessary grading to fit the inlet as shown in the cross sections or to the slope is included in the cost of Culvert End Section No. 3.

Reinforcement bars shall conform to the requirements of ASTM A706 Gr. 60 (IL Modified). See Special Provisions.

See Plan and Profile Sheet for more information.

See Cross Section Sheet for more information.

FILE NAME =	USER NAME = cushmanbw	DESIGNED -	REVISED -	STATE OF ILLINOIS DEPARTMENT OF TRANSPORTATION	BOX CULVERT END SECTION CULVERT NO. 3	F.A. RTE.	SECTION	COUNTY	TOTAL SHEETS	SHEET NO.
c:\pwwork\pwid01\CUSHMANBW\dms31213\406688culvertdetail.dgn		DRAWN -	REVISED -			742	37R-4	OGLE	867	174
PLOT SCALE = 50.0000' / IN.		CHECKED -	REVISED -			CONTRACT NO. 64E17				
PLOT DATE = Wed Mar 31 08:57:48 2010		DATE -	REVISED -			ILLINOIS FED. AID PROJECT				
						SCALE:	SHEET NO.	OF	SHEETS	STA. TO STA.