

STATE OF ILLINOIS
DEPARTMENT OF TRANSPORTATION

GENERAL NOTES

Reinforcement Bars shall conform to the requirements of ASTM A706 Gr 60. See Special Provisions.

Reinforcement bars designated (E) shall be epoxy coated.

Drilling and setting of piles will require drilling into loose sand. (See boring logs). Temporary drill casings or drilling slurry may be required to keep holes open prior to placement of concrete. See drilled soldier pile retaining wall special provision. All drilling will be paid as "Drilling & Setting Soldier Piles (In Soil)".

Concrete shall be painted in accordance with special provisions. The color shall be selected by the engineer.

Exposed steel wide flange/pile shall be painted with an inorganic zinc rich primer/acrylic/acrylic paint system for shop and field painting except for portions located more than 4 feet below the finished grade at the front face of the wall. The finished coat shall be only applied to the exposed surfaces of the steel piles after the concrete panels have been installed. The color of the final finish coat shall be approved by the Resident Engineer and Project Engineer. See special provisions for Cleaning and Painting New Metal Structures.

After placement of bottom precast panel, fill must be placed equally on both sides in order to continue construction of wall and place additional panels. Backfill at front face of wall must be at finished grade.

Method used for cutting piles to their final length shall result in a smooth and neat appearance. Jagged edges shall not be acceptable.

All form liners required for the precast concrete panels are included in the pay item "Retaining Wall (Special)".

Installation of the name plate shall be in accordance with Highway Standard 515001-03 and Article 515 of the Standard Specifications. The location of the name plate to be determined by the Resident Engineer.

If the contractor chooses to alter the temporary cantilevered sheet piling design requirements shown on the plans, a design submittal including plan details and calculations will be required for review and acceptance by the Engineer.

DESIGN SPECIFICATIONS

2002 A.A.S.H.T.O. Specifications & Supplements

DESIGN STRESSES

Precast Units

$f_y = 60,000 \text{ psi}$

$f'_c = 5,000 \text{ psi (Precast)}$

Field Units

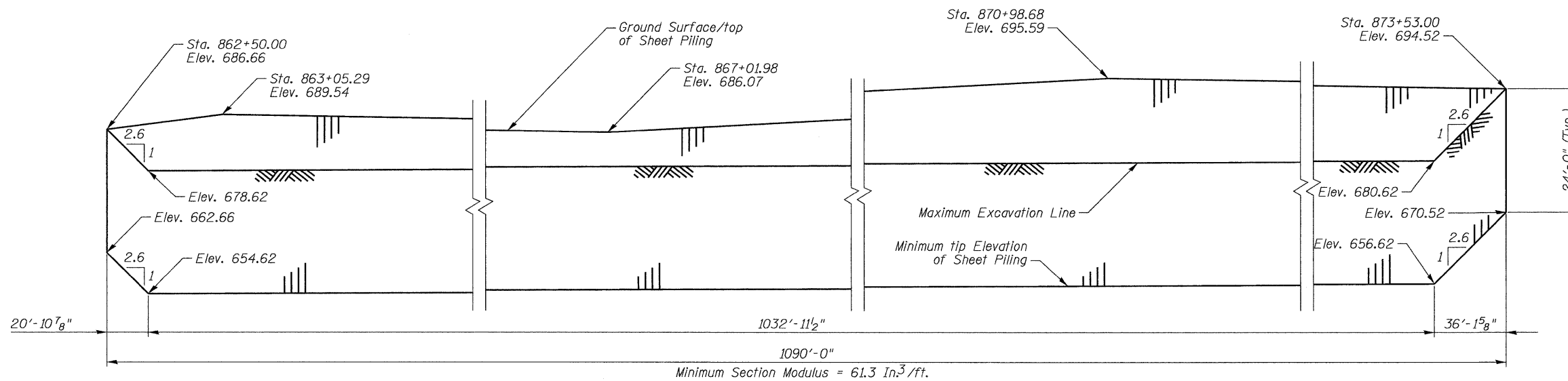
$f_y = 60,000 \text{ psi (Reinforcement)}$

$f_y = 50,000 \text{ psi (AASHTO M270 Gr. 50)}$

TOTAL BILL OF MATERIALS

DESCRIPTION	UNIT	QTY.
Structure Excavation	Cu. Yd.	1,997.5
Name Plates	Each	1
Pipe Underdrains for Structures 4"	Foot	1,089.8
Concrete Gutter, Type A (Modified)	Foot	1,089.8
Furnishing Soldier Piles (HP Section)	Foot	3,269
Furnishing Soldier Piles (W Section)	Foot	1,601
Temporary Sheet Piling*	Sq. Ft.	38,036
Geocomposite Wall Drain	Sq. Yd.	1,133
Drilling & Setting Soldier Piles (In Soil)	Cu. Ft.	7,092
Driving Soldier Piles	Foot	3,269
Retaining Wall (Special)	Sq. Ft.	11,721
Staining Concrete Structures	Sq. Yd.	983

* Temporary Sheet Piling design below.



LEFT STATION 862+70 TO 873+70
BUILT 20__ BY
STATE OF ILLINOIS
F.A.P. RTE. 742 SEC. 37R-4
STRUCTURE NO. 071-7005

NAME PLATE
See Std. 515001

TEMPORARY SHEET PILING DETAIL

(Looking West)

GENERAL NOTES & TOTAL BILL OF MATERIALS

STRUCTURE NO. 071-7005

DESIGNED	CTH
CHECKED	DFM
DRAWN	CTH
CHECKED	DFM

Howard R. Green Company

SHEET NO. 5 18 SHEETS	F.A.P. RTE.	SECTION	COUNTY	TOTAL SHEETS	SHEET NO.
	742	37R-4	OGLE	867	240
FED. ROAD DIST. NO. 7 ILLINOIS			CONTRACT NO. 64E17		
FED. AID PROJECT					