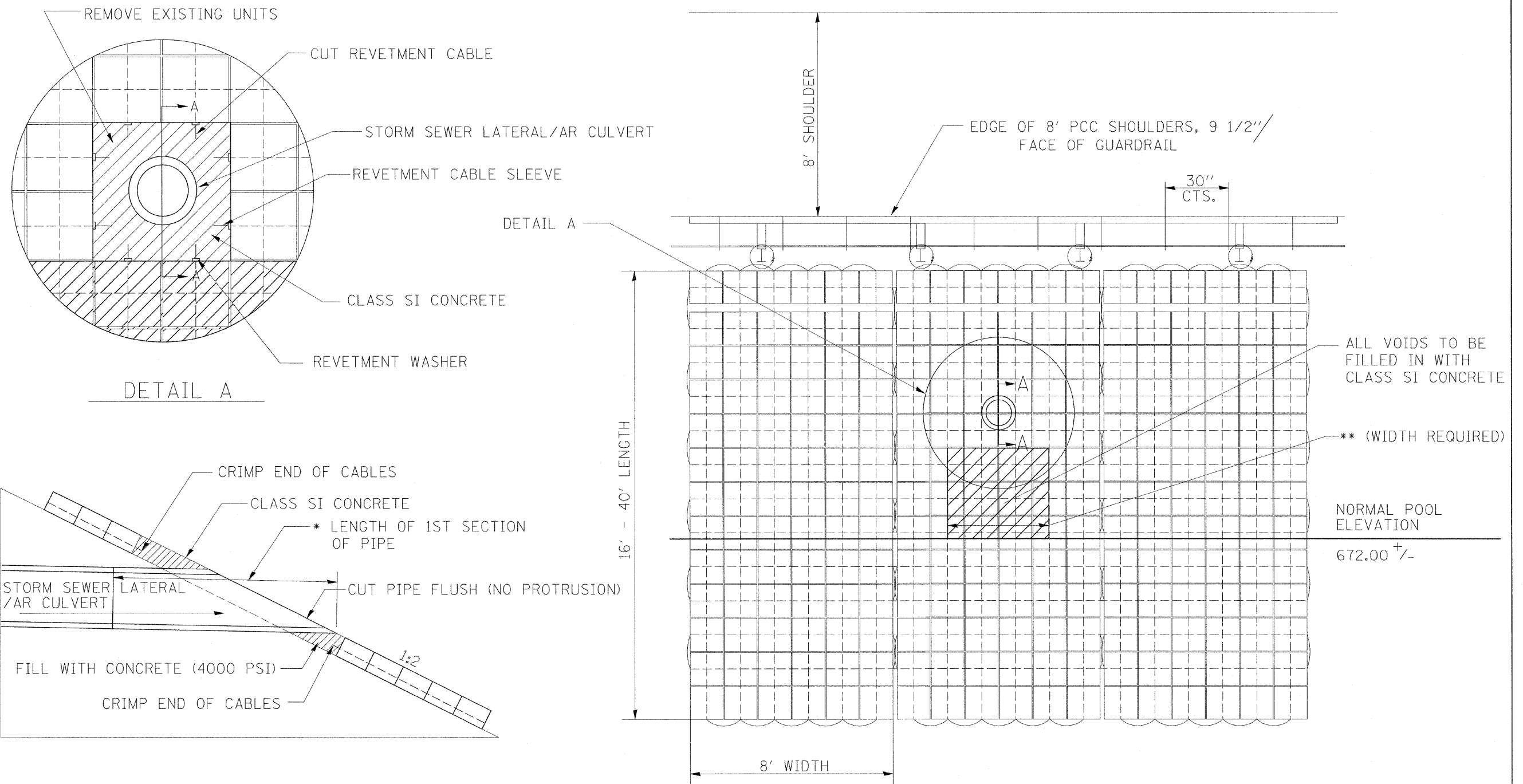


ARTICULATED BLOCK – CULVERT DETAIL



SECTION A-A

STORM SEWER PASSING THROUGH MATS

AR CULVERTS

RT. STA 705+09 48" RCP --- ** WIDTH REQUIRED = 12'-0"
 RT. STA 995+90 30" RCP --- ** WIDTH REQUIRED = 7'-0"

* LENGTH OF 1ST SECTION REQUIRED FOR AR CULVERTS = 12'-0"

STORM SEWER LATERALS

** WIDTH REQUIRED = 3'-0"
 (SEE DRAINAGE SCHEDULE FOR LOCATIONS)

FILE NAME =	USER NAME = cushmanbw	DESIGNED -	REVISED -	STATE OF ILLINOIS DEPARTMENT OF TRANSPORTATION	ARTICULATED BLOCK – CULVERT DETAIL	F.A.P. RTE.	SECTION	COUNTY	TOTAL SHEETS	SHEET NO.	
01\pwwork\VPWIDOT\CUSHMANBW\dms31213\d0608ap1.dgn		DRAWN -	REVISED -			742	37R-4	OGLE	867	449	
PLOT SCALE = 50.0000' / IN.		CHECKED -	REVISED -			CONTRACT NO. 64E17					
PLOT DATE = Wed Jun 02 09:16:00 2010		DATE -	REVISED -			ILLINOIS FED. AID PROJECT					
					SCALE:	SHEET NO. OF SHEETS		STA. TO STA.			