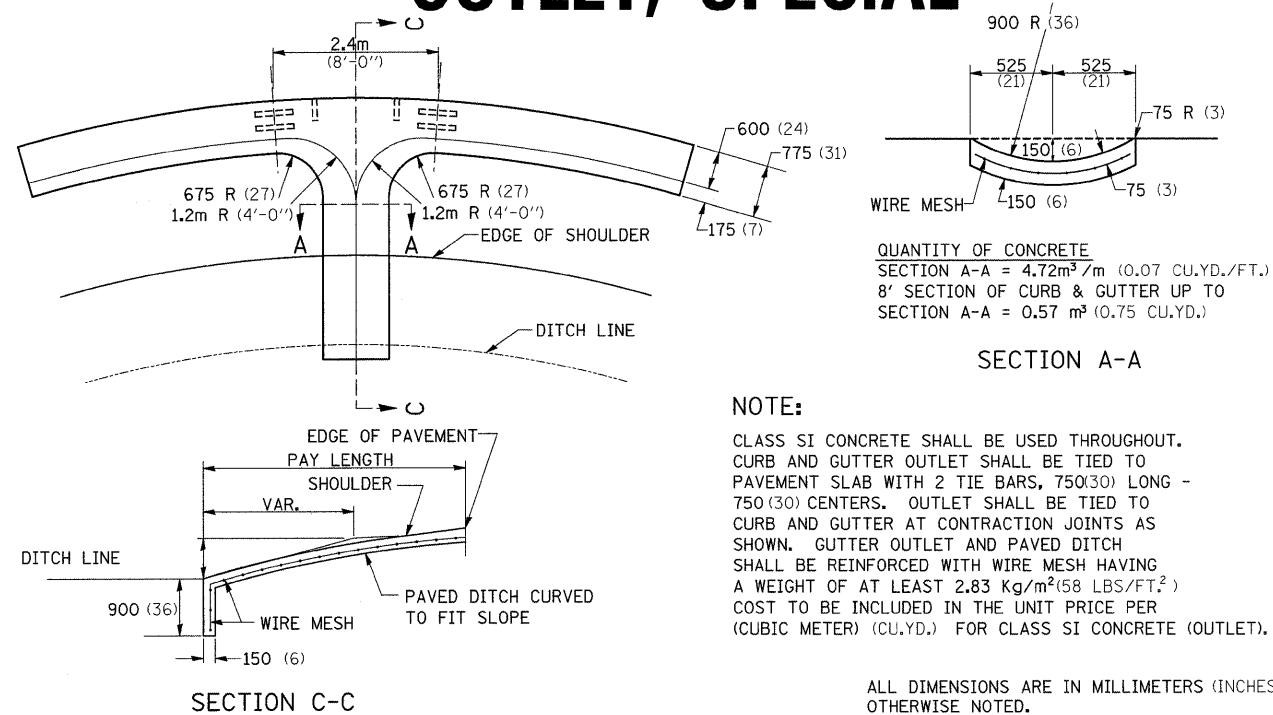
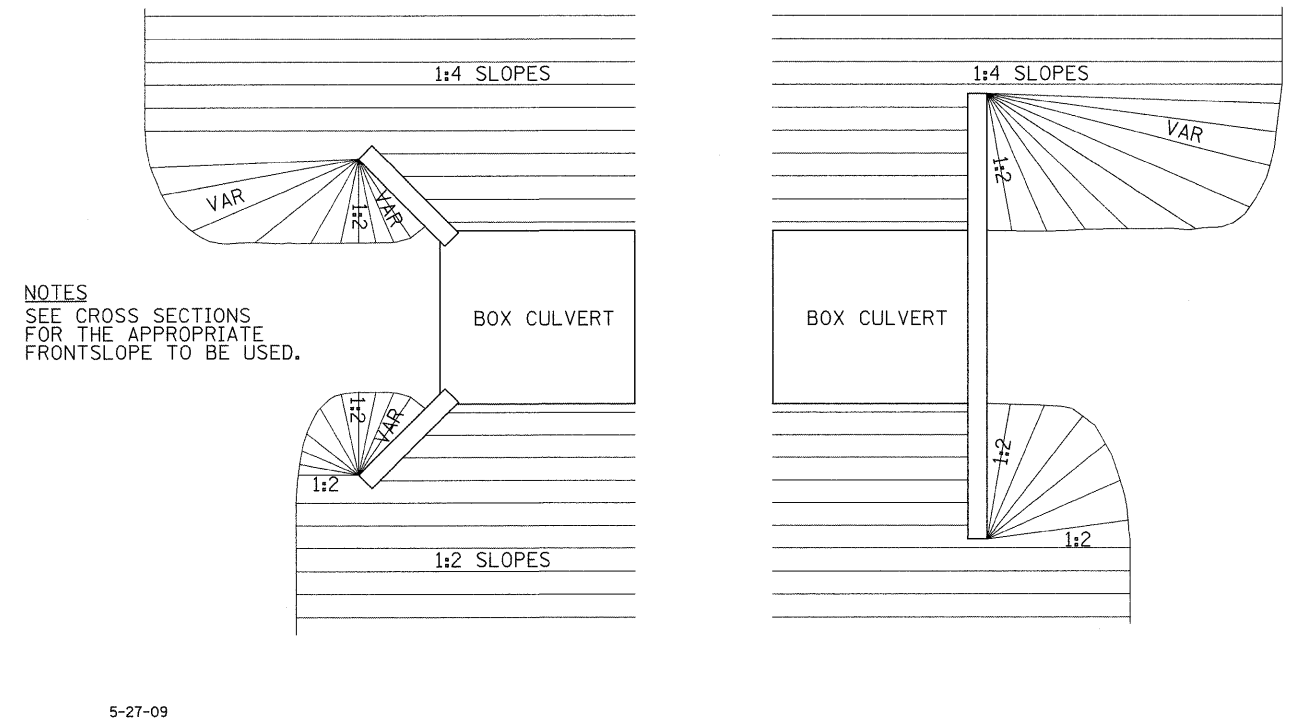


CURB AND GUTTER OUTLET, SPECIAL



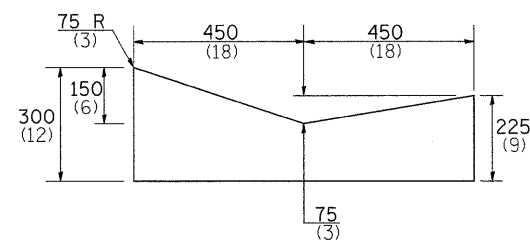
CURB AND GUTTER OUTLET, SPECIAL 18.4

GRADING AROUND WINGWALLS



GRADING AROUND WINGWALLS 20.4

CONCRETE GUTTER, TYPE A (MODIFIED)



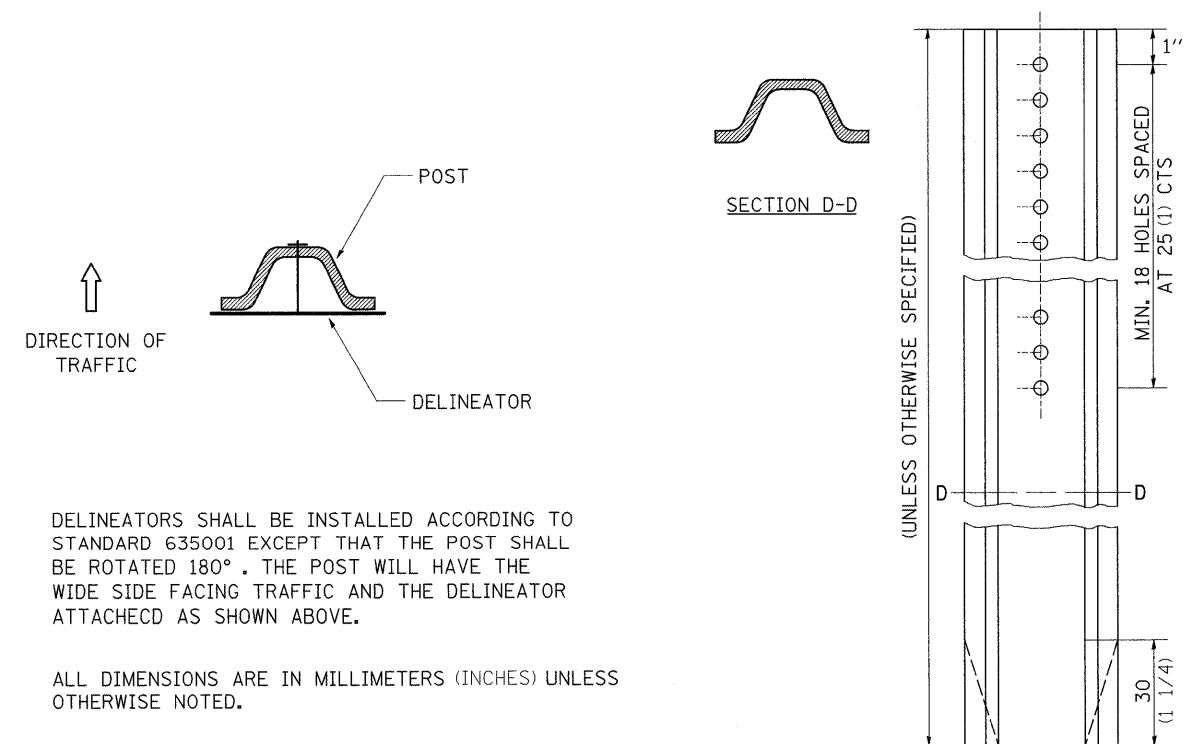
NOTES:
THIS WORK SHALL BE DONE IN ACCORDANCE WITH THIS DETAIL AND STANDARD 606101
THIS WORK SHALL BE PAID FOR AT THE CONTRACT UNIT PRICE PER METER (FOOT) FOR CONCRETE GUTTER, TYPE A (MODIFIED).

ALL DIMENSIONS ARE IN MILLIMETERS (INCHES) UNLESS OTHERWISE NOTED.

REVISED - 5-4-94

CONCRETE GUTTER, TYPE A (MODIFIED) 36.4

DELINEATOR AND POST ORIENTATION



REVISED - 11-01-07

REVISED -	REGION 2 / DISTRICT 2 STANDARD	F.A.P. RTE.	SECTION	COUNTY	TOTAL SHEETS	SHEET NO.
REVISED -		742	37R-4	OGLE	867	467
REVISED -		SCALE: 50.0000' / 1" SHEET NO. OF SHEETS STA. TO STA.		CONTRACT NO. 64E17		
REVISED -		FED. ROAD DIST. NO. ILLINOIS FED. AID PROJECT				
REVISED -		PLOT DATE = Tue Mar 30 09:22:30 2010				

DELINEATOR AND POST ORIENTATION 37.4