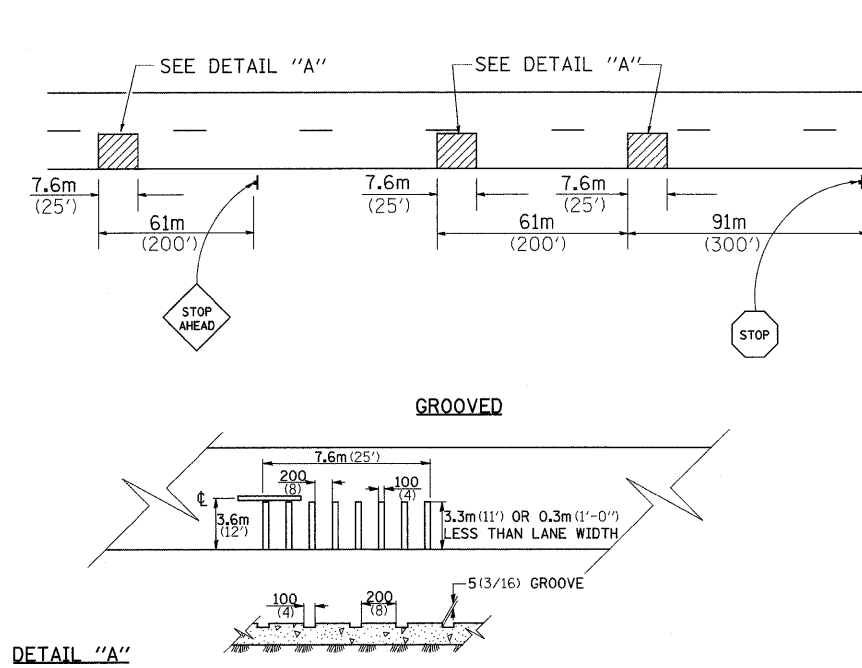


RUMBLE RESURFACING



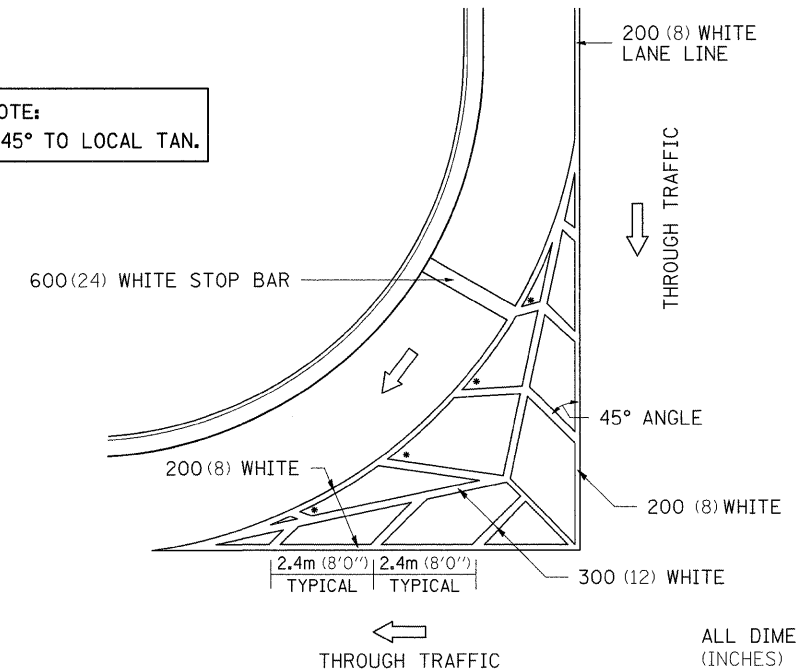
ALL DIMENSIONS ARE IN MILLIMETERS (INCHES) UNLESS OTHERWISE NOTED.

REVISED - 3-22-10

RUMBLE RESURFACING 91.4

TYPICAL MARKING FOR PAINTED ISLANDS

NOTE:
* 45° TO LOCAL TAN.



ALL DIMENSIONS ARE IN MILLIMETERS (INCHES) UNLESS OTHERWISE NOTED.

REVISED - 2-7-05

TYPICAL MARKING FOR PAINTED ISLANDS 93.4

STOP LINE SIGN FOR TEMPORARY SIGNALS



SIZE: 600(24) x 600(24)
100(4) CAPITAL LETTERS - BLACK
13(1/2) BORDER - BLACK
WHITE REFLECTIVE - TYPE AP
HIGH INTENSITY PRISMATIC SHEETING

GENERAL NOTE:

THIS SIGN SHALL BE INSTALLED AT THE STOP LINE AS DIRECTED BY ENGINEER.

ALL DIMENSIONS ARE IN MILLIMETERS (INCHES) UNLESS OTHERWISE NOTED.

REVISED - 1-22-07

STOP LINE SIGN FOR TEMPORARY SIGNALS 99.4

| | | | | | | | |
|-----------|---------------------------------------|----------------------|-----------|-----------|--------------|---------------------------|---------------------|
| REVISED - | REGION 2 / DISTRICT 2 STANDARD | F.A.P. RTE. | SECTION | COUNTY | TOTAL SHEETS | SHEET NO. | |
| REVISED - | | 742 | 37R-4 | OGLE | 867 | 470 | |
| REVISED - | | | | | | CONTRACT NO. | 64E17 |
| REVISED - | | SCALE: 50:0000' / 1" | SHEET NO. | OF SHEETS | STA. | TO STA. | FED. ROAD DIST. NO. |
| REVISED - | | | | | | ILLINOIS FED. AID PROJECT | |

PLOT DATE = Tue Mar 30 09:22:35 2010