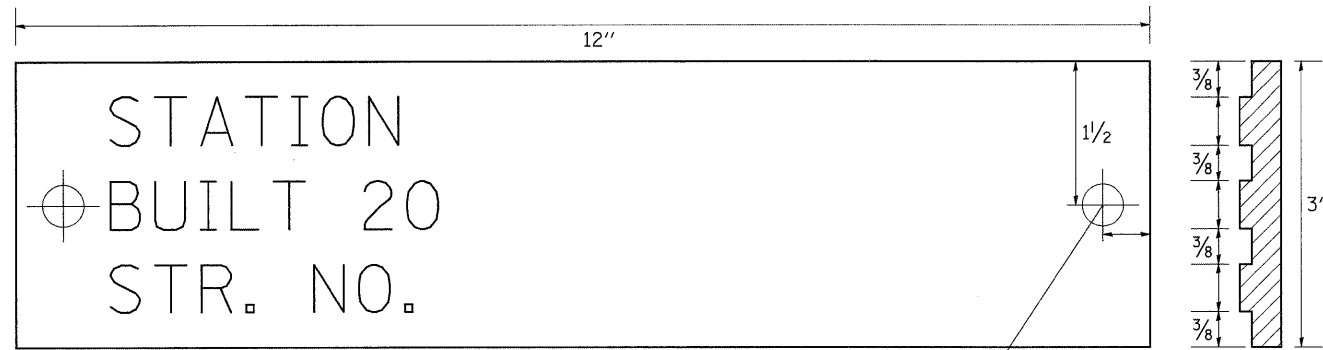
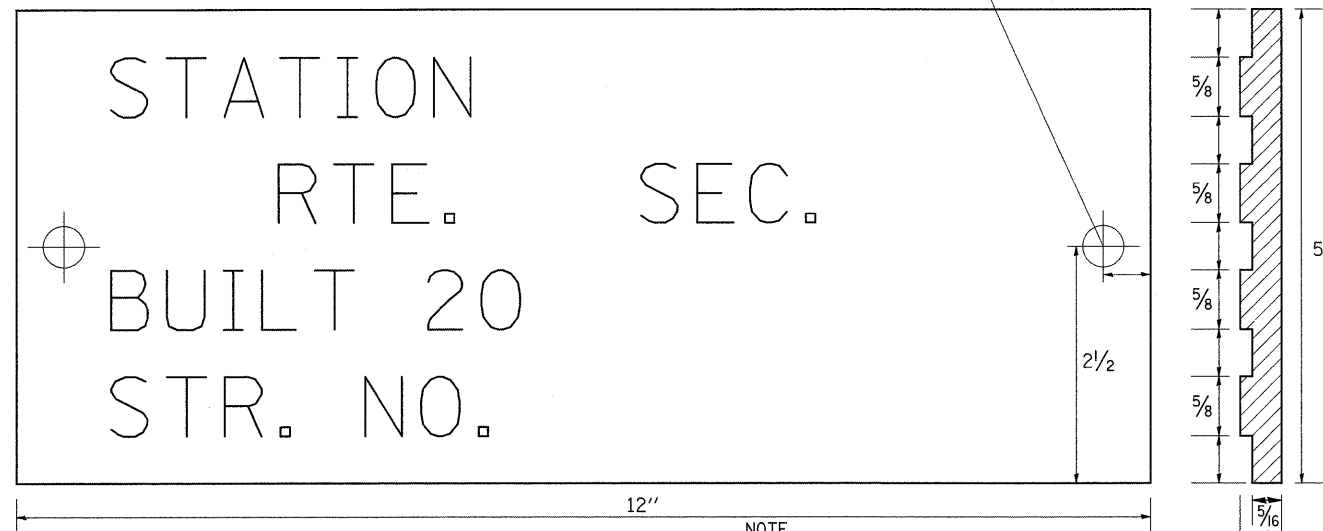


NAME PLATE FOR CULVERTS

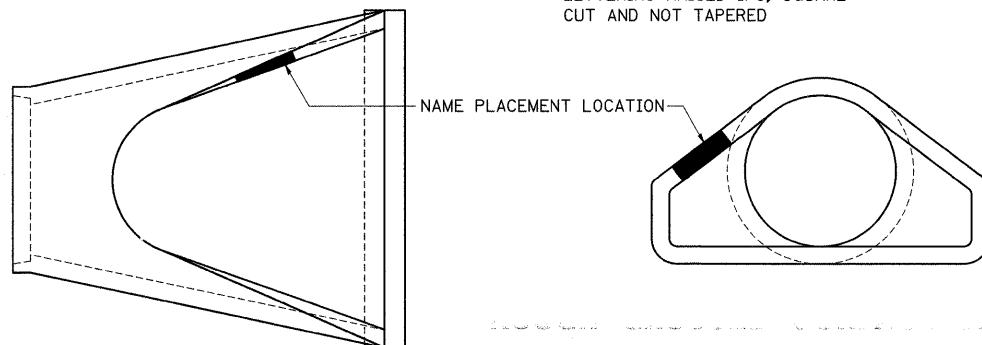
FOR 24"-42" PIPE CULVERTS



FOR 48"-84" PIPE CULVERTS



NOTE
LETTERING RAISED 1/8, SQUARE CUT AND NOT TAPERED



DESIGNERS NOTE

NAME PLATES SHALL BE FURNISHED & INSTALLED ACCORDING TO SECTION 515 OF THE STANDARD SPECIFICATIONS, EXCEPT 2 BOLTS SHALL BE USED TO FASTEN THE PLATE TO THE END SECTION.

USE STANDARD 515001 FOR BRIDGES AND MULTI-CELL CULVERTS WITH SPANS OF 20' OR MORE MEASURED ALONG THE CENTERLINE AT THE HIGHWAY.

USE THIS DETAIL FOR ALL OTHER PIPE CULVERTS & BOX CULVERTS WITH STRUCTURE NUMBERS. INCLUDE THE INFORMATION TO FILL OUT THE NAME PLATE FOR EACH CULVERT.

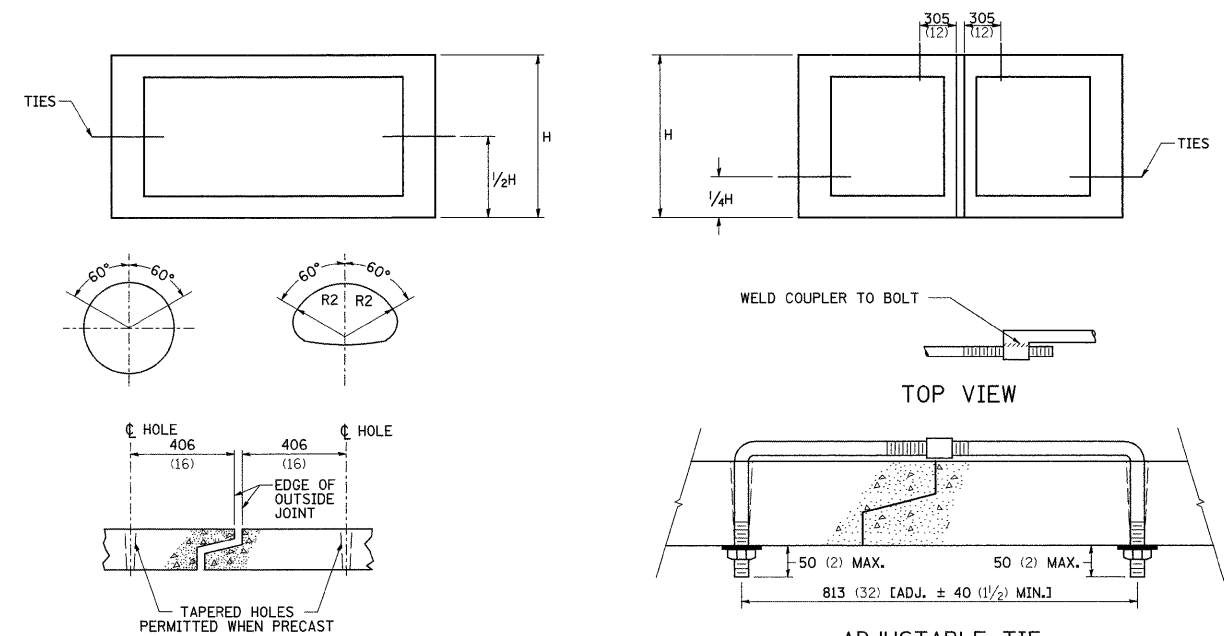
IN BOTH CASES INCLUDE A PAY ITEM FOR NAME PLATES.

REVISED - 5-27-09

STATION	STRUCTURE NO.
740+79	071-1163
784+00	071-1206
792+26	071-1207
824+30	071-1211
860+66	071-1212
899+50	071-1214
942+31	071-1215
986+88	071-1217
995+90	071-1209
1010+58	071-1218

MECHANICAL JOINTS FOR CONCRETE PIPE AND BOX CULVERTS

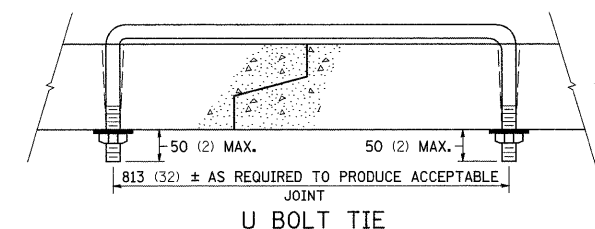
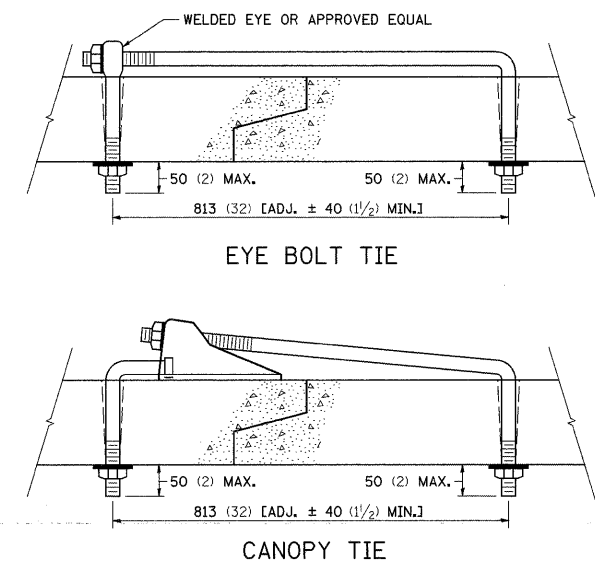
THE CULVERT TIES SHALL BE INCLUDED IN THE COST OF THE CONCRETE PIPE CULVERTS OR THE PRECAST CONCRETE BOX CULVERT. THE MECHANICAL TIES SHALL BE ON THE OUTSIDE OF THE CULVERT. THE NUTS AND WASHERS SHALL BE PLACED ON THE INSIDE OF THE CULVERT AND COVERED WITH MASTIC JOINT SEALER CONFORMING TO ARTICLES 1055 OR 1056 IN THE STANDARD SPECIFICATIONS FOR ROAD AND BRIDGE CONSTRUCTION.



PLACEMENT OF HOLES		
BOX CULVERT METERS (FEET)	PIPE SIZE MILLIMETERS (INCHES)	THREAD DIAMETER
	300 (12)	16 (5/8)
	380 (15)	16 (5/8)
	450 (18)	16 (5/8)
	530 (21)	16 (5/8)
	600 (24)	16 (5/8)
	680 (27)	16 (5/8)
	760 (30)	19 (3/4)
0.9x0.6 (3x2)	830 (33)	19 (3/4)
0.9x0.9 (3x3)	910 (36)	19 (3/4)
1.2x0.6 (4x2)	1060 (42)	CUT OR ROLLED
1.2x0.9 (4x3)	1210 (48)	CUT OR ROLLED
1.2x1.2 (4x4)	1370 (54)	CUT OR ROLLED
1.5x0.9 (5x3)	1520 (60)	25 (1)
1.5x1.2 (5x4)	1670 (66)	25 (1)
1.5x1.5 (5x5)	1820 (72)	25 (1)
1.8x * (6x *)	1980 (78)	25 (1)
2.1x * (7x *)	2130 (84)	25 (1)
2.4x * (8x *)	2280 (90)	25 (1)
2.7x * (9x *)	2430 (96)	25 (1)
3.0x * (10x *)	2590 (102)	25 (1)
	2740 (108)	25 (1)
	3040 (120)	35 (1 1/4)
	3350 (132)	35 (1 1/4)
3.4x * (11x *) AND GREATER	3500 (138) AND GREATER	35 (1 1/4)

NOTES:

- HOLES SHALL BE CAST-IN OR DRILLED 400 (16) FROM OUTSIDE EDGE OF JOINT.
- NUTS AND WASHERS ARE NOT REQUIRED ON INSIDE OF 675 (27) DIAM. PIPE OR LESS.
- TIES ARE NOT REQUIRED FOR BELL PIPE 600 (24) AND SMALLER. ON OTHER SIZES TIE MAY BE INSERTED FROM INSIDE.
- CUT THREADS MAY BE USED IF WASHER AND NUT ARE USED.
- PIPE SIZE LISTED IS INSIDE DIAM. OF ROUND PIPE OR EQUIVALENT DIAM. OF PIPE ARCH OR ELLIPTICAL.
- GALVANIZING OF TIES IS REQUIRED.
- ALL DIMENSIONS ARE IN MILLIMETERS (INCHES) UNLESS OTHERWISE NOTED.



REVISED - 2-1-00	REGION 2 / DISTRICT 2 STANDARD	F.A.P. RTE. 742	SECTION 37R-4	COUNTY OGLE	TOTAL SHEETS 867	SHEET NO. 473
REVISED -		SCALE: 50.0000' / IN. SHEET NO. OF SHEETS STA. TO STA.		CONTRACT NO. 64E17		
REVISED -		FED. ROAD DIST. NO. ILLINOIS FED. AID PROJECT				
REVISED -						
REVISED -						