

F.A.P. RTE.	SECTION	COUNTY	TOTAL SHEETS	SHEET NO.
607	D3 CRACK SEAL 2011-4	KENDALL	7	1
		ILLINOIS	CONTRACT NO. 66A45	

INDEX OF SHEETS

1. COVER SHEET
2. GENERAL NOTES
3. SUMMARY OF QUANTITIES
4. TYPICAL SECTIONS
- 5 - 6. SCHEDULES
7. DETAILS

STANDARDS

- | | |
|-----------|--|
| 000001-05 | STANDARD SYMBOLS, ABBREVIATIONS AND PATTERNS |
| 701001-02 | OFF-ROAD OPERATIONS 2L, 2W, MORE THAN 15' (4.5 m) AWAY |
| 701006-03 | OFF-ROAD OPERATIONS 2L, 2W, 15' (4.5 m) TO 24" (600 mm) FROM PAVEMENT EDGE |
| 701301-03 | LANE CLOSURE, 2L, 2W, SHORT TIME OPERATIONS |
| 701306-02 | LANE CLOSURE, 2L, 2W, SLOW MOVING OPERATIONS DAY ONLY, FOR SPEEDS ≥ 45 MPH |
| 701311-03 | LANE CLOSURE, 2L, 2W, MOVING OPERATIONS - DAY ONLY |
| 701901-01 | TRAFFIC CONTROL DEVICES |

**STATE OF ILLINOIS
DEPARTMENT OF TRANSPORTATION**

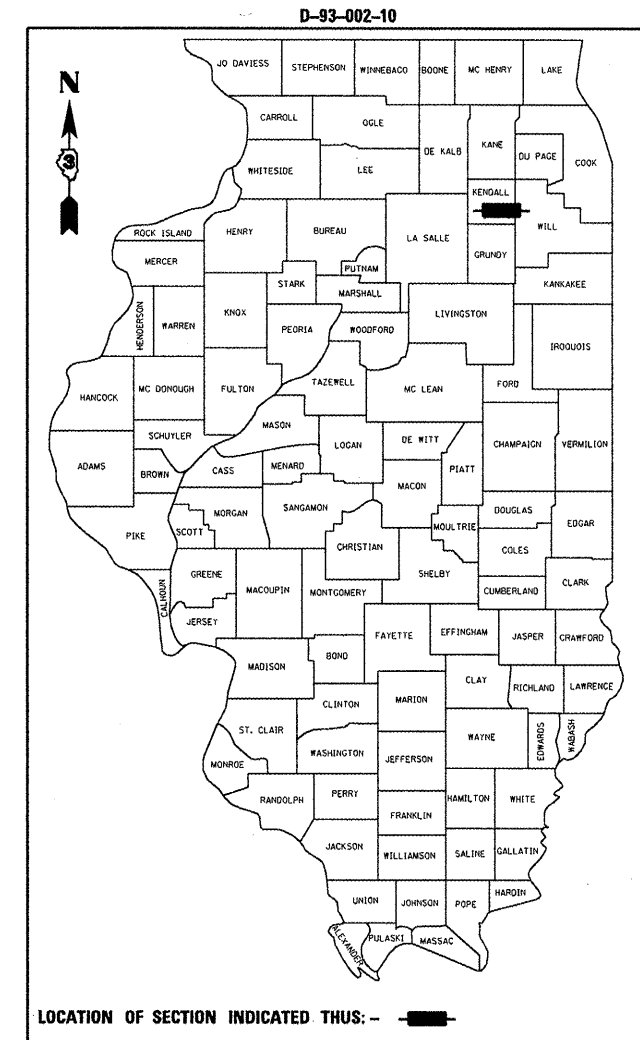
DIVISION OF HIGHWAYS

**PROPOSED
HIGHWAY PLANS**

**FAP ROUTE 607 (US 52)
SECTION D3 CRACK SEAL 2011-4**

**ROUTING AND SEALING PAVEMENT CRACKS
FROM IL ROUTE 47 TO THE WILL COUNTY LINE
KENDALL COUNTY**

C-93-132-10



LOCATION OF SECTION INDICATED THIS: - [black bar] -

FUNCTIONAL CLASSIFICATION

RURAL - MINOR ARTERIAL

FAP 607 (US 52)

2009 ADT 3750

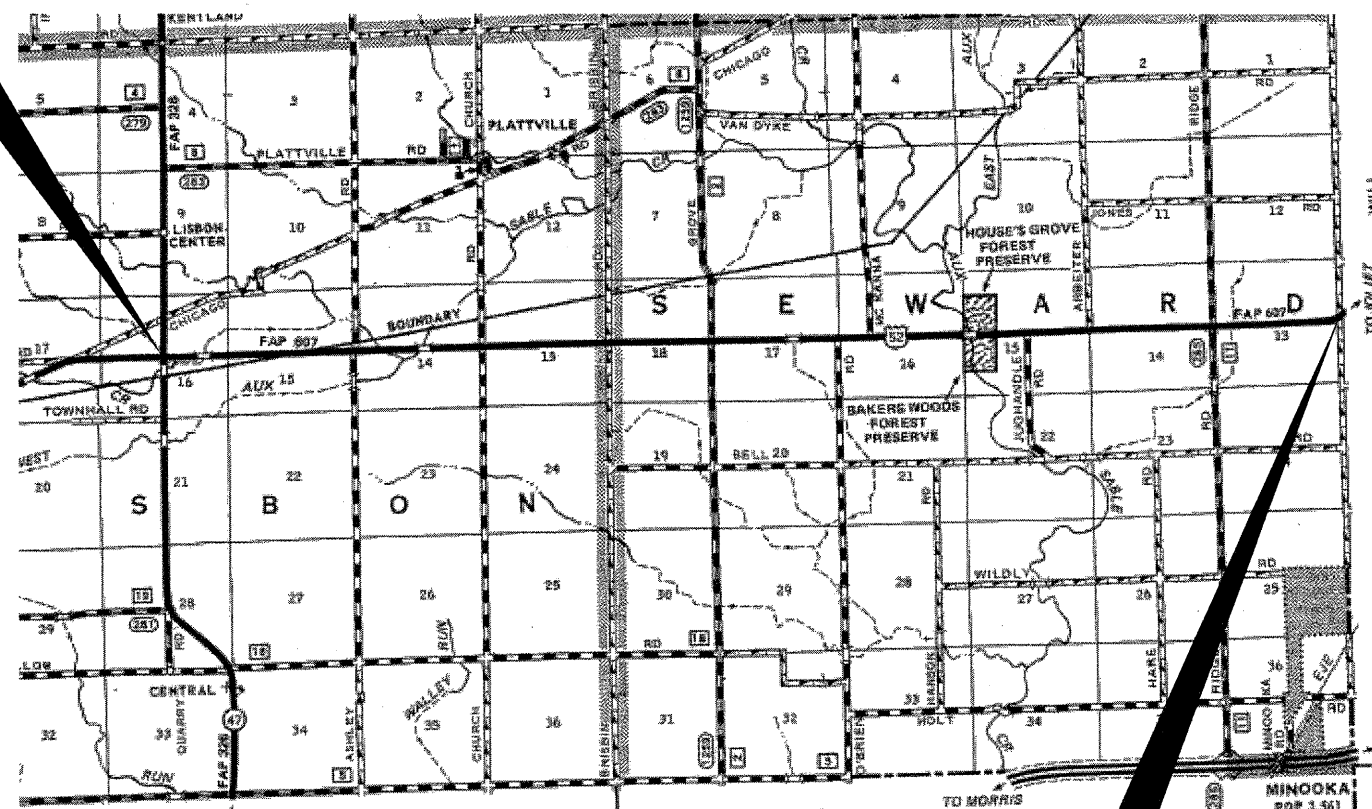
P.V. 86.0 % M.U. 9.0% S.U. 5.0 %

STATE OF ILLINOIS
DEPARTMENT OF TRANSPORTATION
DIVISION OF HIGHWAYS

SUBMITTED 5/19 20 10
George Dugan
DEPUTY DIRECTOR OF HIGHWAYS, REGION ENGINEER
June 25 20 10
Scott E. Stitt, P.E.
acting ENGINEER OF DESIGN AND ENVIRONMENT
June 25 20 10
Christine M. Reed
DIRECTOR OF HIGHWAYS, CHIEF ENGINEER

J.U.L.I.E.
JOINT UTILITY LOCATION INFORMATION FOR EXCAVATION
1-800-892-0123
OR 811

**PROJECT ENGINEER: JOE KANNEL
UNIT CHIEF: RON WOODSHANK
TOWNSHIP: LISBON, SEWARD
CONTRACT NO. 66A45**



**FAP RTE. 607 (US 52)
END IMPROVEMENT
WILL COUNTY LINE
(L.M. 9.15)**

GROSS LENGTH = 48312 FT. = 9.15 MILE

**PRINTED BY THE AUTHORITY
OF THE STATE OF ILLINOIS**