

F.A.P. RTE.	SECTION	COUNTY	TOTAL SHEETS	SHEET NO.
613	(8D-BR-MI)	BUREAU	6	1
FED. ROAD DIST. NO.	ILLINOIS	CONTRACT NO. 66A53		

INDEX OF SHEETS

1. COVER SHEET
2. GENERAL NOTES
3. SUMMARY OF QUANTITIES
4. TYPICAL SECTION
5. PLAN AND ELEVATION - SN 006-0140
6. REPAIR DETAILS

STANDARDS

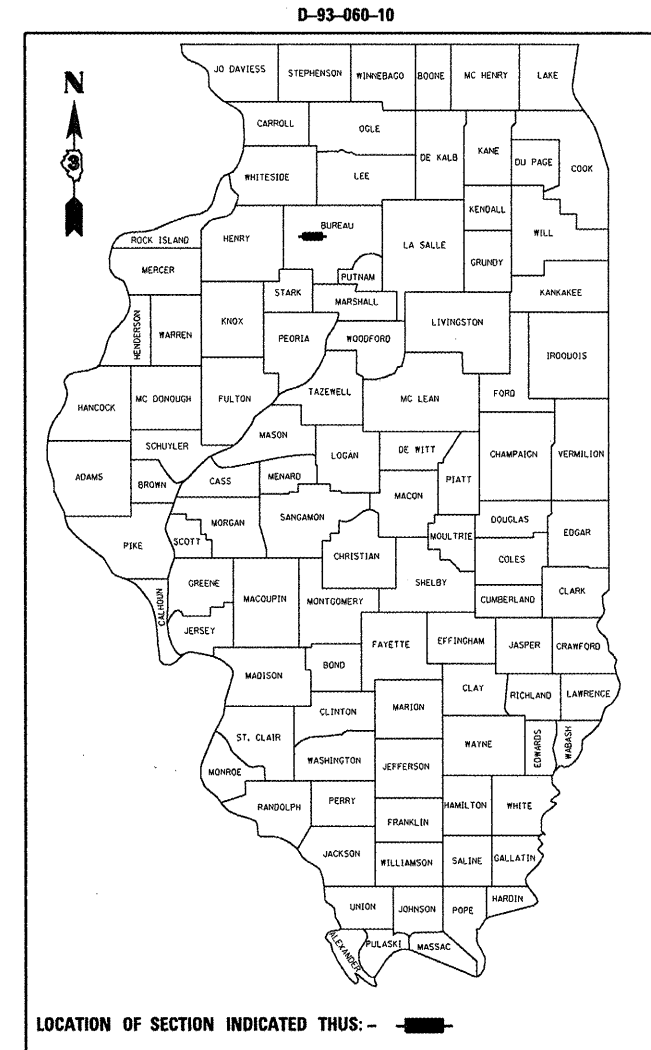
- | | |
|-----------|--|
| 001006 | DECIMAL OF AN INCH AND OF A FOOT |
| 701001-02 | OFF-ROAD OPERATIONS 2L, 2W, MORE THAN 4.5 m (15') AWAY |
| 701006-03 | OFF-ROAD OPERATIONS 2L, 2W, 4.5 m (15') TO 600 mm (24") FROM PAVEMENT EDGE |
| 701201-03 | LANE CLOSURE, 2L, 2W, DAY ONLY, FOR SPEEDS \geq 45 MPH |
| 701301-03 | LANE CLOSURE, 2L, 2W, SHORT TIME OPERATIONS |
| 701901-01 | TRAFFIC CONTROL DEVICES |

STATE OF ILLINOIS
DEPARTMENT OF TRANSPORTATION
DIVISION OF HIGHWAYS

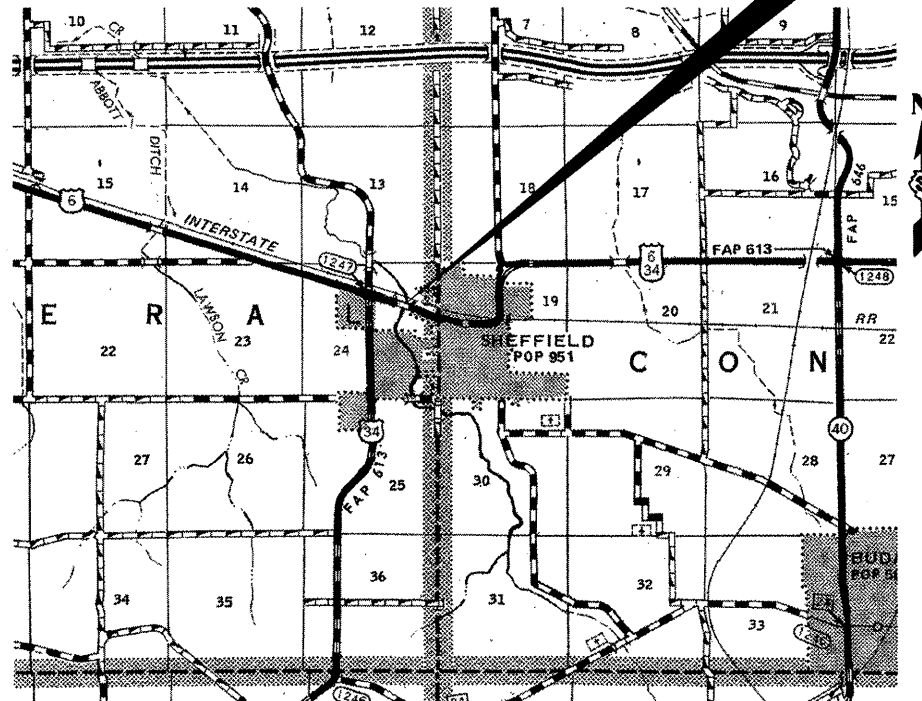
PROPOSED
HIGHWAY PLANS

FAP ROUTE 613 (US 6/34)
SECTION (8D-BR-MI)

DECK SLAB SUPPORT
AT S.N. 006-0140 CARRYING
FAP ROUTE 613 (US 6/34) OVER COAL CREEK AT
THE WEST EDGE OF SHEFFIELD
BUREAU COUNTY
C-93-152-10



PROJECT LOCATION
S.N. 006-0140



LOCATION MAP

NOT TO SCALE
POINT LOCATION

MICROFILMED _____
REEL NUMBER _____
AWARDED _____
RESIDENT ENGINEER _____
AS BUILT CHANGES WERE MADE
ON THE FOLLOWING SHEETS _____

J.U.L.I.E.
JOINT UTILITY LOCATION INFORMATION FOR EXCAVATION
1-800-892-0123

PROJECT ENGINEER : JOE KANNEL
UNIT CHIEF : RON WOODSHANK
TOWNSHIP : MINERAL

CONTRACT NO. 66A53

FUNCTIONAL CLASSIFICATION
RURAL - MINOR ARTERIAL
FAP 613 (US 6/34)
2009 ADT
P.V. 85.0% M.U. 9.0% S.U. 6.0%

STATE OF ILLINOIS
DEPARTMENT OF TRANSPORTATION
DIVISION OF HIGHWAYS

SUBMITTED 6/4 20 10
Scott E. Stitt
DEPUTY DIRECTOR OF HIGHWAYS, REGION ENGINEER
June 25 20 10
Scott E. Stitt, P.E. / b
Acting ENGINEER OF DESIGN AND ENVIRONMENT
June 25 20 10
Christine M. Reed / b
DIRECTOR OF HIGHWAYS, CHIEF ENGINEER

PRINTED BY THE AUTHORITY
OF THE STATE OF ILLINOIS

GENERAL NOTES

PLAN DIMENSIONS AND DETAILS RELATIVE TO EXISTING PLANS ARE SUBJECT TO ROUTINE VARIATIONS. THE CONTRACTOR SHALL FIELD VERIFY EXISTING DIMENSIONS AND DETAILS AFFECTING NEW CONSTRUCTION AND MAKE NECESSARY APPROVED ADJUSTMENTS PRIOR TO CONSTRUCTION OR ORDERING OF MATERIALS. SUCH VARIATIONS SHALL NOT BE CAUSE FOR ADDITIONAL COMPENSATION FOR A CHANGE IN THE SCOPE OF THE WORK. HOWEVER, THE CONTRACTOR WILL BE PAID FOR THE QUANTITY FURNISHED BASED UPON THE UNIT BID PRICE FOR THE WORK.

FOR STABILIZATION, ALL TYPE III BARRICADES SHALL REQUIRE A MINIMUM OF FOUR SAND BAGS PER BARRICADE.

ANY REFERENCE TO A STANDARD IN THESE PLANS SHALL BE INTERPRETED TO MEAN THE EDITION AS INDICATED BY THE SUBNUMBER LISTED ON THE INDEX OF SHEETS OR THE COPY OF THE STANDARD INCLUDED IN THESE PLANS.

DATE: 6/4/10

PREPARED BY: *Don Rowell*
ACTIVE DISTRICT STUDIES & PLANS ENGINEER

EXAMINED BY: *Richard D. Long*
 DISTRICT CONSTRUCTION ENGINEER

Ray S. Phillips
 DISTRICT MATERIALS ENGINEER

Bruce A. Luckert
 DISTRICT OPERATIONS ENGINEER

FILE NAME =	USER NAME = woodshankr1	DESIGNED - RON WOODSHANK	REVISED - ---	STATE OF ILLINOIS DEPARTMENT OF TRANSPORTATION	GENERAL NOTES	F.A.P. RTE.	SECTION	COUNTY	TOTAL SHEETS	SHEET NO.
ct:\pwork\psdot\woodshankr1\d0189948\003-detais.dgn	DRAWN - RON WOODSHANK	REVISED - ---	613			(80-BR-M1)	BUREAU	6	2	
PLOT SCALE = 100.0000' / IN.	CHECKED - ---	REVISED - ---	CONTRACT NO. 66A53							
PLOT DATE = Jun 01, 2010 - 10:04:12 AM	DATE - ---	REVISED - ---	FED. ROAD DIST. NO. ILLINOIS FED. AID PROJECT							
		SCALE: _____ SHEET NO. 1 OF 1 SHEETS			STA. _____ TO STA. _____					

SUMMARY OF QUANTITIES

CONSTRUCTION CODE TYPE: SFTY-2A

RURAL
100% STATE
TOTAL
QUANTITY

CODE NO.	ITEM	UNIT	TOTAL QUANTITY
50500405	FURNISHING AND ERECTING STRUCTURAL STEEL	POUND	111650
67100100	MOBILIZATION	L SUM	1
70100450	TRAFFIC CONTROL AND PROTECTION, STANDARD 701201	L SUM	1

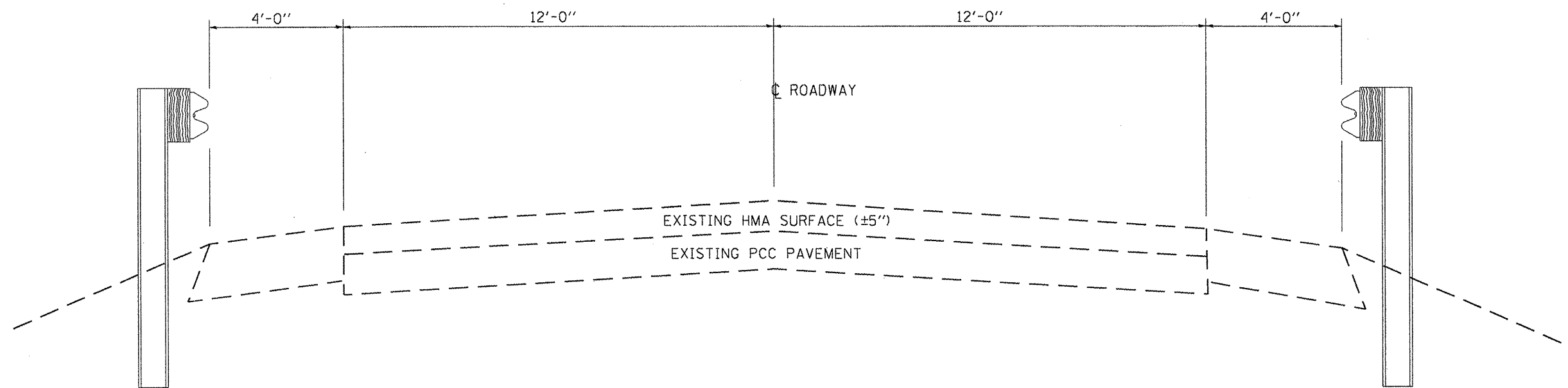
FILE NAME =	USER NAME = woodshankr1	DESIGNED - RON WOODSHANK	REVISED - ---
cd:\pr_work\pwt\dot\woodshankr1\0189948\003-details.dgn		DRAWN - RON WOODSHANK	REVISED - ---
		CHECKED - ---	REVISED - ---
		DATE - ---	REVISED - ---

**STATE OF ILLINOIS
DEPARTMENT OF TRANSPORTATION**

SUMMARY OF QUANTITIES

SCALE: _____ SHEET NO. 1 OF 1 SHEETS STA. _____ TO STA. _____

F.A.P. RTE.	SECTION	COUNTY	TOTAL SHEETS	SHEET NO.
613	(8D-BR-MI)	BUREAU	6	3
FED. ROAD DIST. NO. _____ ILLINOIS FED. AID PROJECT			CONTRACT NO. 66A53	



FILE NAME =	USER NAME = woodshankr1	DESIGNED - RON WOODSHANK	REVISED - ----
et:\pwr\work\pwr\dot\woodshankr1\d0189948	003-details.dgn	DRAWN - RON WOODSHANK	REVISED - ----
	PLOT SCALE = 100.0000 1/ IN.	CHECKED - ----	REVISED - ----
	PLOT DATE = Jun 01, 2010 - 10:04:51 AM	DATE - ----	REVISED - ----

**STATE OF ILLINOIS
DEPARTMENT OF TRANSPORTATION**

TYPICAL SECTION

SCALE: _____ SHEET NO. 1 OF 1 SHEETS STA. _____ TO STA. _____

F.A.P. RTE.	SECTION	COUNTY	TOTAL SHEETS	SHEET NO.
613	(80-BR-M)I	BUREAU	6	4
CONTRACT NO. 66A53			FED. ROAD DIST. NO. ILLINOIS FED. AID PROJECT	

STATE OF ILLINOIS
DEPARTMENT OF TRANSPORTATION

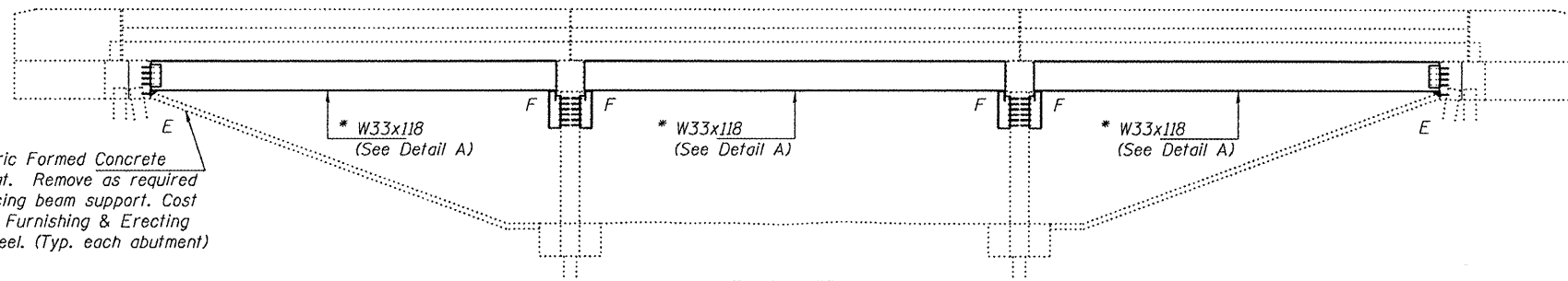
* Contractor is to verify beam length prior to ordering material. Other sections meeting the section modulus requirements shown may be allowed subject to approval by the Bureau of Bridges and Structures. Maximum Girder depth = 36". No additional payment will be allowed if the contractor chooses a heavier steel section than the one specified in the plans. (Min. $S_x = 359 \text{ in}^3$)

Note A:
① Transverse tie \bar{L} 's (3 per span). Place additional shims at midpoints between tie \bar{L} 's. Securely weld shims to top flange of support beam. Minimum shim size is 6" x flange width.

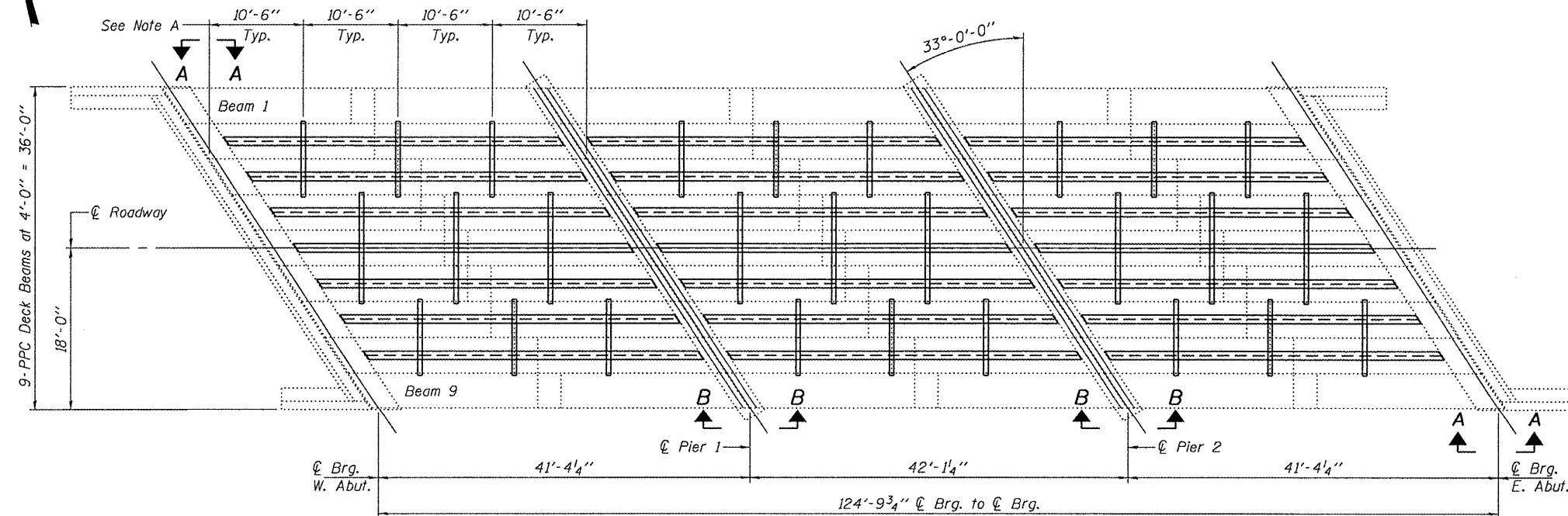
GENERAL NOTES

All structural steel shall conform to AASHTO Classification M-270 Gr. 36, unless otherwise noted.
Plan dimensions and details relative to existing plans are subject to nominal construction variations. The Contractor shall field verify existing dimensions and details affecting new construction and make necessary approved adjustments prior to construction or ordering of materials. Such variations shall not be cause for additional compensation for a change in scope of the work, however, the Contractor will be paid for the quantity actually furnished at the unit price bid for the work.
The contractor is advised that the existing PPC Deck Beams are in a deteriorated condition with reduced load carrying capacity. It is the contractors responsibility to account for the condition of the beams when developing construction procedures.
See Section 584 of the Standard Specifications for Epoxy Grouting of Threaded Rods; Minimum embedment 9".
If the contractor's procedure for placement of beams involves placement of cranes or other heavy equipment on the bridge, a detailed procedure shall be submitted to the Engineer for approval. The procedure shall include calculations, prepared and sealed by an Illinois Licensed Structural Engineer, verifying that the equipment and procedure used will not overstress the existing beams. To distribute load to multiple beams and protect the existing surface, in all cases a double layer mat of heavy timbers shall be used at all times under crane tracks or wheels and any outriggers in the down position. If necessary, shims shall be used under the crane mat to ensure uniform contact with the underlying beams.
The cost of epoxy grouting threaded rods on the pier cap, abutments and beams shall be included with Furnishing and Erecting Structural Steel.
The Contractor has the option of using used steel. See Special Provisions.

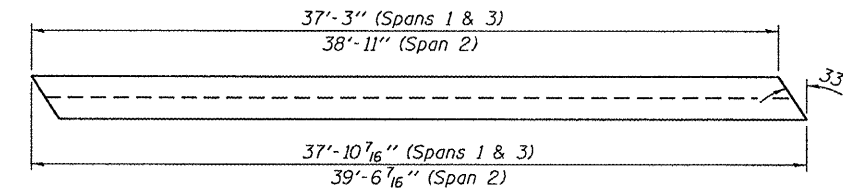
Existing Fabric Formed Concrete Revetment Mat. Remove as required to place bracing beam support. Cost included with Furnishing & Erecting Structural Steel. (Typ. each abutment)



ELEVATION

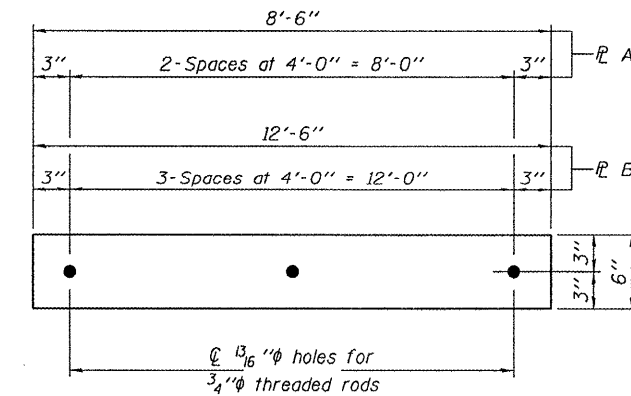


PLAN



DETAIL A

W33x118 x 37'-10 7/16" (14 Req'd)
W33x118 x 39'-6 1/16" (7 Req'd)



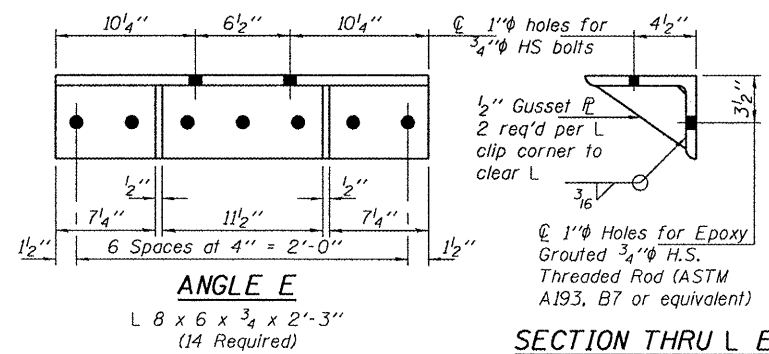
TRANSVERSE TIE \bar{L} 'S

\bar{L} A 1/2" x 8'-6" x 6" (18 Req'd)
 \bar{L} B 1/2" x 12'-6" x 6" (9 Req'd)

TOTAL BILL OF MATERIAL

ITEM	UNIT	QUANTITY
Furnishing and Erecting Structural Steel	Pound	111,650

PLAN & ELEVATION
U.S. RTE. 6 & 34 OVER
COAL CREEK
SN 006-0140



SECTION THRU L E

DESIGNED	<i>[Signature]</i>
CHECKED	<i>[Signature]</i>
DRAWN	Kyle M. Steffen
CHECKED	<i>[Signature]</i>

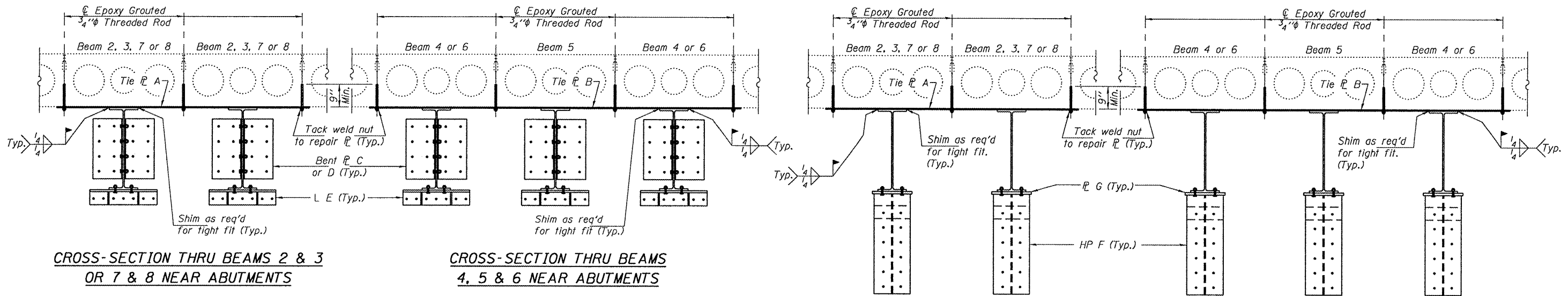
EXAMINED	<i>[Signature]</i>	JUNE 14, 2010
PASSED	<i>[Signature]</i>	



Expires: November 30, 2010

SHEET NO. 1	F.A.P. RTE. 613	SECTION (8D-BR-MI)	COUNTY BUREAU	TOTAL SHEETS 6	SHEET NO. 5
2 SHEETS	CONTRACT NO. 66A53		FED. ROAD DIST. NO. ILLINOIS FED. AID PROJECT		

STATE OF ILLINOIS
DEPARTMENT OF TRANSPORTATION

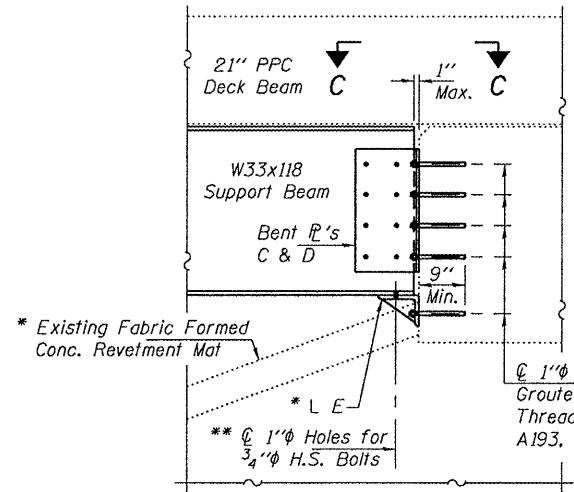


CROSS-SECTION THRU BEAMS 2 & 3
OR 7 & 8 NEAR ABUTMENTS

CROSS-SECTION THRU BEAMS
4, 5 & 6 NEAR ABUTMENTS

CROSS-SECTION THRU BEAMS 2 & 3
OR 7 & 8 NEAR PIERS

CROSS-SECTION THRU BEAMS
4, 5 & 6 NEAR PIERS



SECTION A-A

* Remove existing Fabric Formed Concrete Revetment Mat as required to facilitate installation of L. E. Cost included with Furnishing and Erecting Structural Steel.

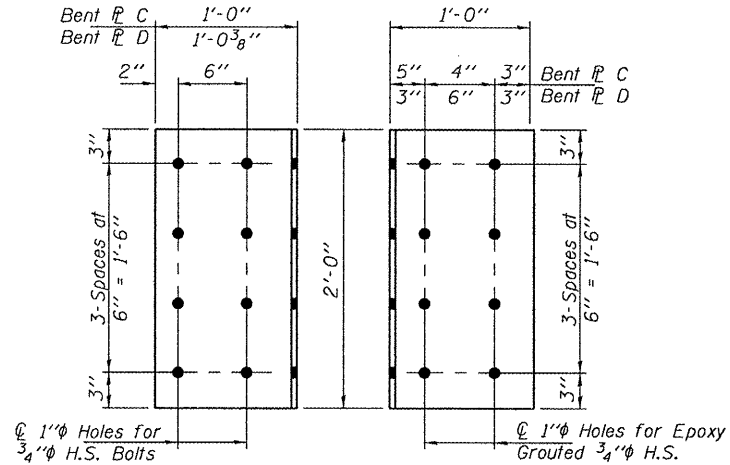
** Use holes in L or P to field drill holes in Support Beam.

* Existing Fabric Formed Conc. Revetment Mat

1" Holes for Epoxy Grouted 3/4" H.S. Threaded Rod (ASTM A193, B7 or equivalent)

1" Holes for 3/4" H.S. Bolts

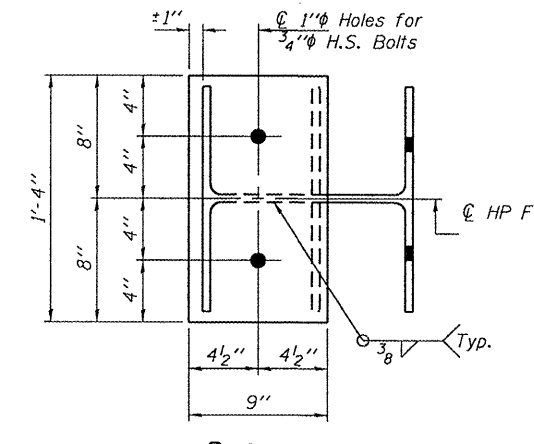
1" Holes for Epoxy Grouted 3/4" H.S. Threaded Rod (ASTM A193, B7 or equivalent)



TYPICAL BENT PLATE ELEVATION

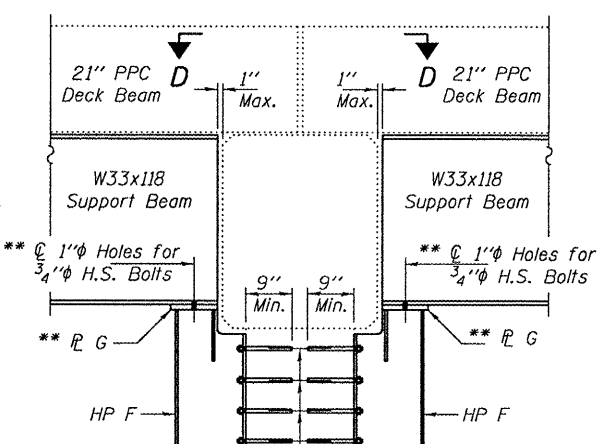
1" Holes for 3/4" H.S. Bolts

1" Holes for Epoxy Grouted 3/4" H.S. Threaded Rod (ASTM A193, B7 or equivalent)



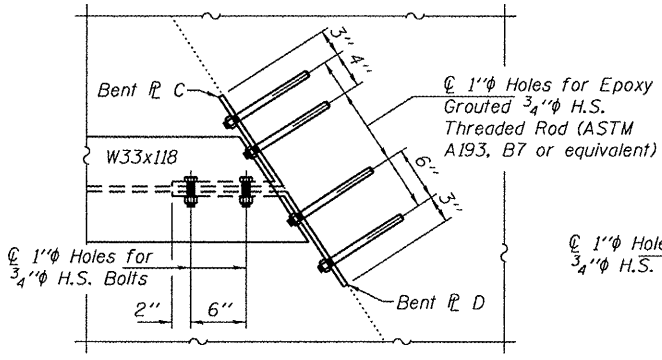
P G
1" x 1'-4" x 9"
(28 Required)

** Use holes in L or P to field drill holes in Support Beam.



SECTION B-B

1" Holes for Epoxy Grouted 3/4" H.S. Threaded Rod (ASTM A193, B7 or equivalent)



SECTION C-C

1" Holes for 3/4" H.S. Bolts

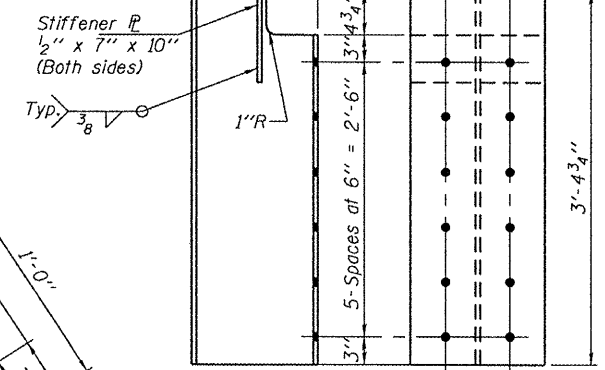
1" Holes for Epoxy Grouted 3/4" H.S. Threaded Rod (ASTM A193, B7 or equivalent)

BENT PLATE C
1/2" x 2'-0" x 2'-0"
(14 Required)

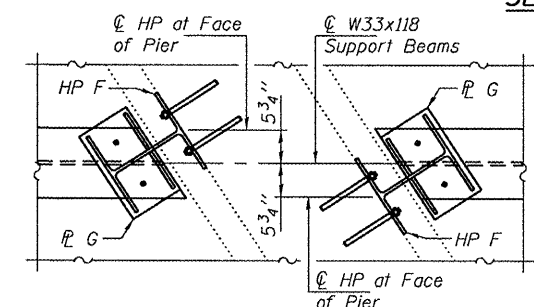
1" Holes for 3/4" H.S. Bolts

1" Holes for Epoxy Grouted 3/4" H.S. Threaded Rod (ASTM A193, B7 or equivalent)

BENT PLATE D
1/2" x 2'-0" x 2'-0 3/8"
(14 Required)



HP F
HP14x73 x 3'-4 3/4"
(28 Required)



SECTION D-D

REPAIR DETAILS
SN 006-0140

DESIGNED	GGE
CHECKED	VHV
DRAWN	Kyle M. Steffen
CHECKED	GGE VHV

JUNE 14, 2010
EXAMINED *Carl Proyer*
ENGINEER OF STRUCTURAL SERVICES
PASSED *Ralph E. Anderson*
ENGINEER OF BRIDGES AND STRUCTURES

SHEET NO. 2 2 SHEETS	F.A.P. RTE.	SECTION	COUNTY	TOTAL SHEETS	SHEET NO.
	613	(8D-BR-M)1	BUREAU	6	6
FED. ROAD DIST. NO.			ILLINOIS FED. AID PROJECT		
CONTRACT NO. 66A53					