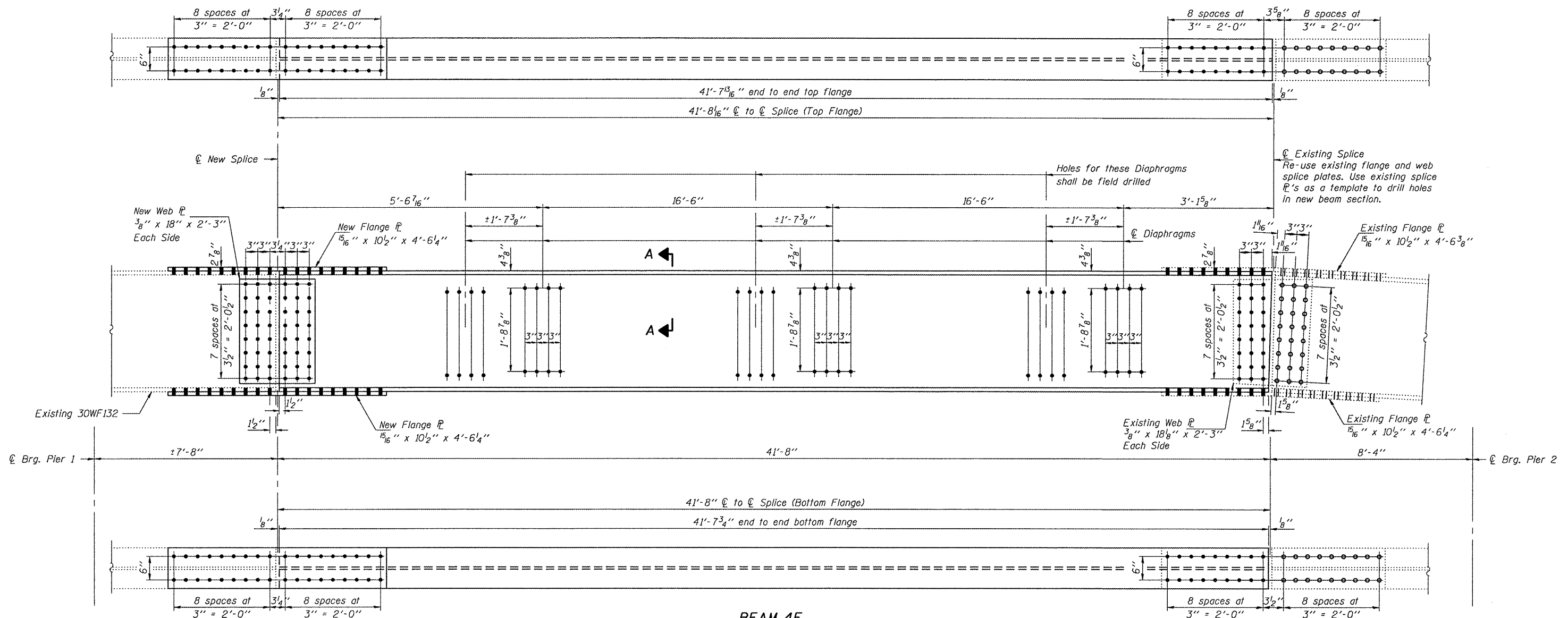
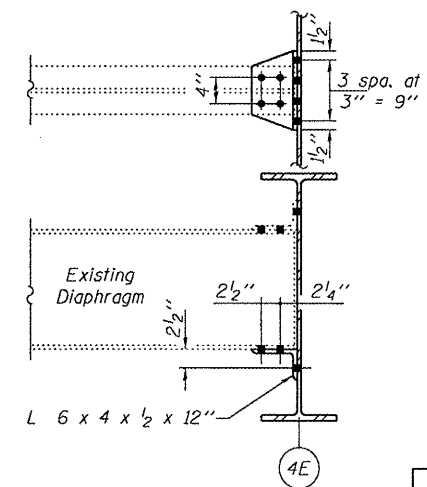
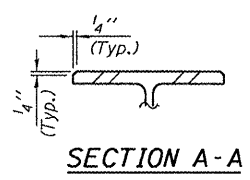


STATE OF ILLINOIS
DEPARTMENT OF TRANSPORTATION



BEAM 4E
W30x132 x 41'-7¹³/₁₆" (1 Req'd) N.T.R.
Web PL 3⁵/₈" x 18" x 2'-3" (2 Req'd) N.T.R.
Flange PL 1⁵/₁₆" x 10¹/₂" x 4'-6¹/₄" (2 Req'd) N.T.R.



**BEAM DETAILS
PINECREST DRIVE
OVER F.A.I. RTE. 74
SN 090-0091**

DESIGNED	VHV	JUNE 15, 2010
CHECKED	IJL	EXAMINED <i>Carl Proyer</i> ENGINEER OF STRUCTURAL SERVICES
DRAWN	Kyle M. Steffen	PASSED <i>Ralph E. Anderson</i> ENGINEER OF BRIDGES AND STRUCTURES
CHECKED	VHV IJL	

SHEET NO. 2 4 SHEETS	F.A.I. RTE.	SECTION	COUNTY	TOTAL SHEETS	SHEET NO.
	74	[90-14HB-1(BR)]	TAZEWELL	17	11
FED. ROAD DIST. NO.			ILLINOIS FED. AID PROJECT		
CONTRACT NO. 68976					